



Country /City

University / School

Academic year

Title of the project

Authors

Germany, Gelsenkirchen-Hassel

RWTH Aachen University, Institute of Landscape Architecture

Summer 2020

farmINC. Hassel: inclusive. educational. productive.

Katja Gadziak, Isabell Santüns

TECHNICAL DOSSIER

Title of the project	farmINC. Hassel: inclusive. educational. productive.
Authors	Katja Gadziak Isabell Santüns
Title of the course	Design studio "Stadtfarm_GE: agricultural park Hassel" (1 semester, 15 ECTS)
Academic year	Summer 2020
Teaching Staff	Dr.-Ing. Axel Timpe, landscape architect
Department / Section / Program of belonging	Institute of Landscape Architecture, M. Sc. in Architecture, M.Sc. in Urban Planning
University / School	RWTH Aachen University



Written statement, short description of the project in English, no more than 250 words

The site of the former coking plant Hassel in the post-industrial city of Gelsenkirchen is being transformed into a park. Contaminated soils are being cleaned up and stored securely on the site which makes the park suitable for food production. In cooperation with the City of Gelsenkirchen and with the Faculty of Agronomy of South-Westphalia University of Applied Science students at the Institute of Landscape Architecture have developed a business model and design for an agricultural park on the site. The farm.INC Hassel project proposes a business model combining food production for the local market (vegetable box scheme) with the creation of inclusive jobs and educational offers to surrounding schools and kindergardens.

The design of the park, the farm and a new housing area is structured into different areas increasing the intensity of the agricultural system from west to east. Woodland and orchards, pasture, arable fields, vegetable fields and market gardens offer different landscape experiences and different ways to engage with agriculture while the north of the park surrounding the lake is dedicated to classic uses of urban parks. After the design proposal discussed with the city in summer 2020 a local community supported agriculture farm has started to implement elements of the design and the business model using the park for sheep and cow grazing, vegetable growing and educational offers.

12th International Biennial Landscape Barcelona

Barcelona November 2023

SCHOOL PRIZE

For further information

Máster d'Arquitectura del Paisatge - UPC

Contact via email at:
master.paisatge.comunicacio@gmail.com

biennal.paisatge@upc.edu

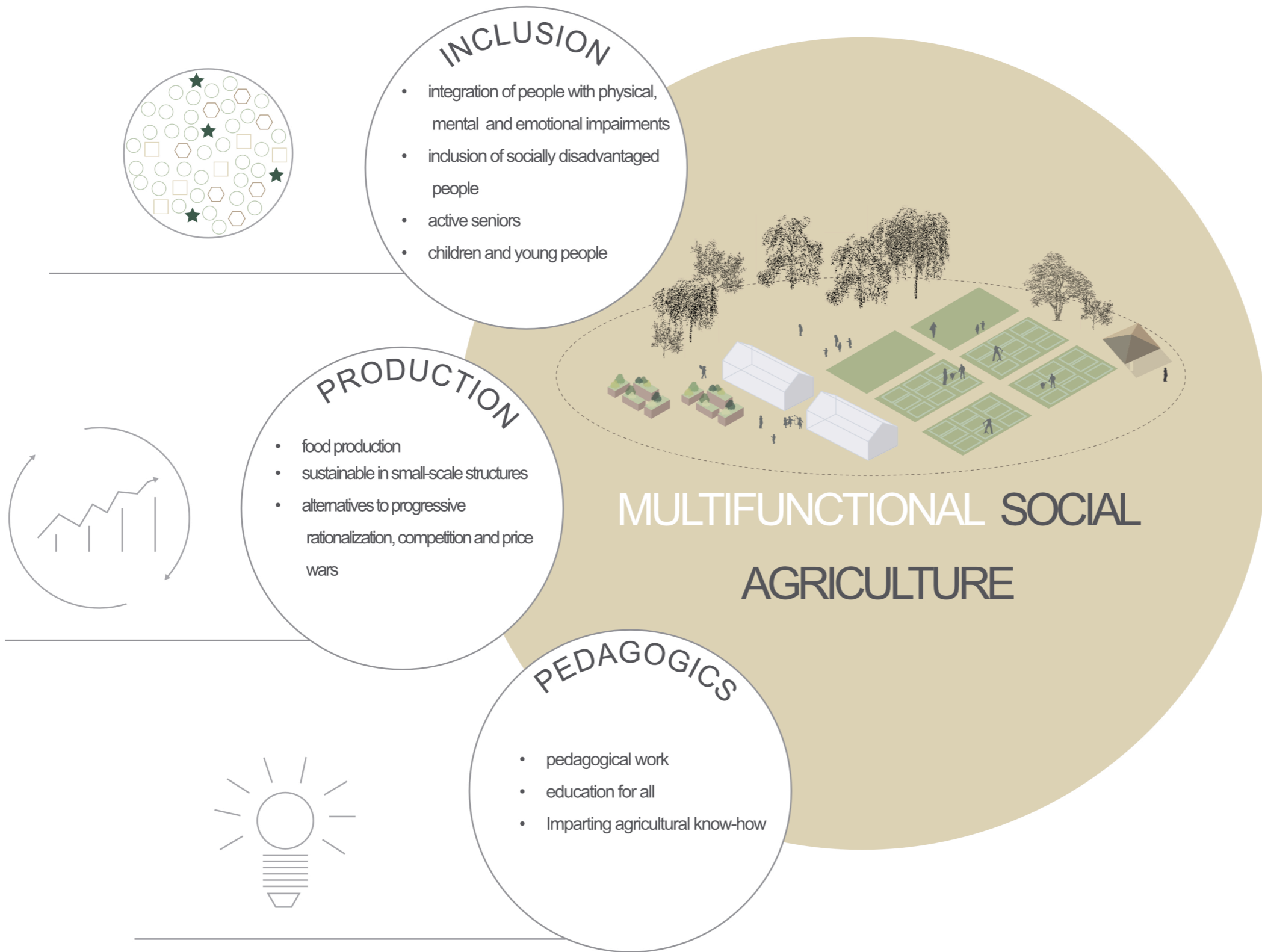
Máster d'Arquitectura del Paisatge - UPC

Sede ETSAB - Universitat Politècnica de Catalunya

Calle Jordi Girona, 15. Edificio Omega 1-3
08034 Barcelona - Spain

COAC - Colegi oficial d'Arquitectes de Catalunya

Carrer Arcs, 1-3
08002 Barcelona - Spain



Thinking urban development in generations



Education as a central topic



Participation for all



Experience nature in the big city

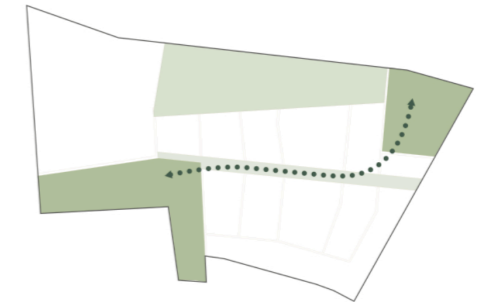


Sustainable management

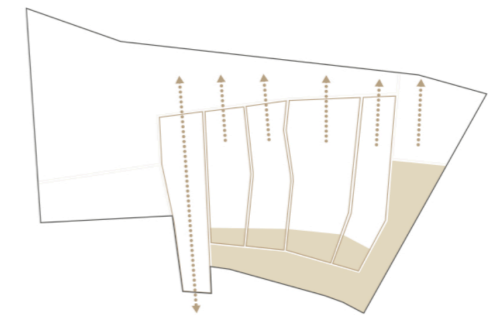
fam.INK Hassel agricultural park



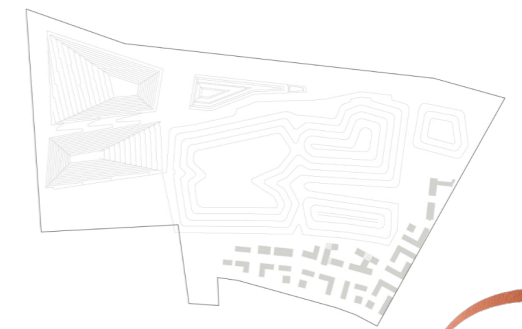
SPACIAL DERIVATION



Green and open space network

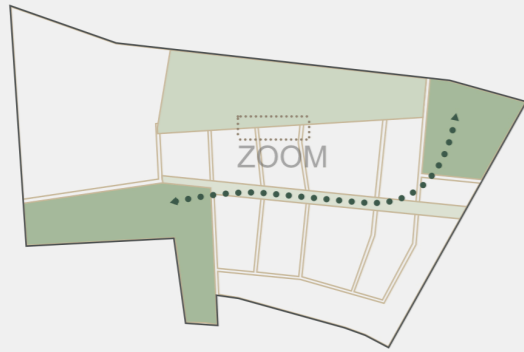


products and multiplicity of experience



plans for the development

PARK BY THE LAKE



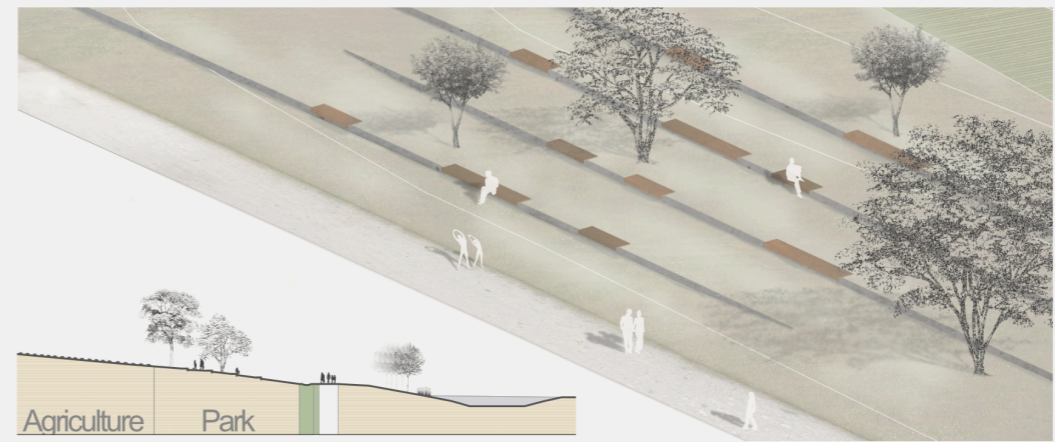
Park space



Frequentation

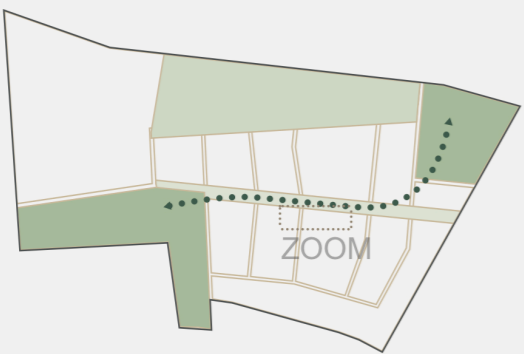


Stay



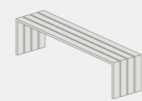
Agriculture Park

PARK IN THE FIELD



Modular residence ensemble

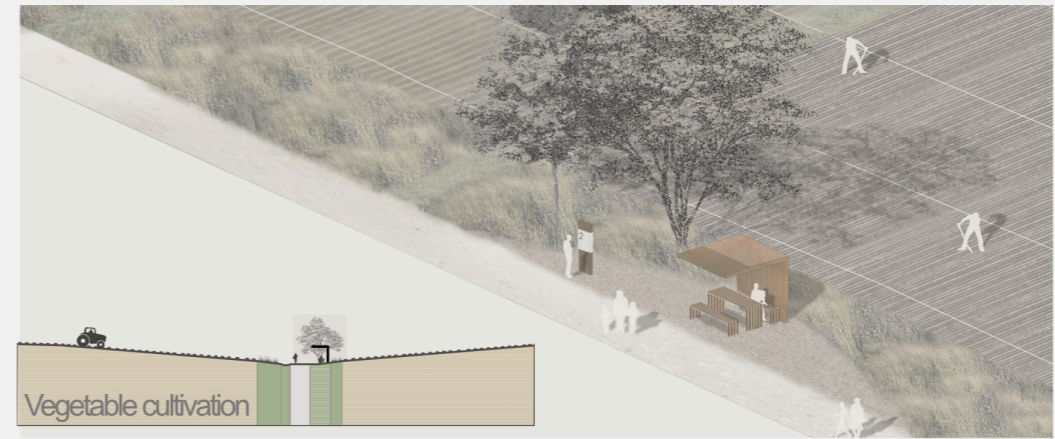
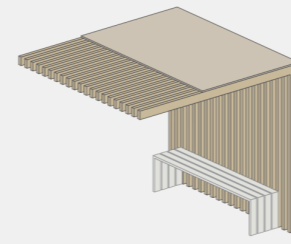
Wooden bench



Picnic table

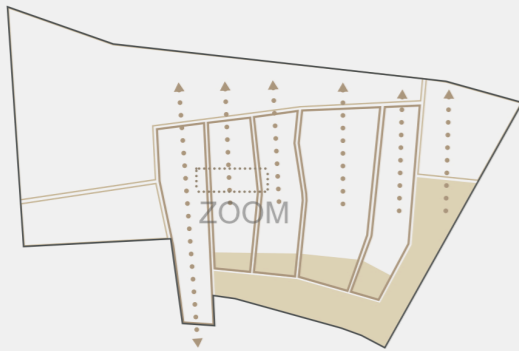


Shelter

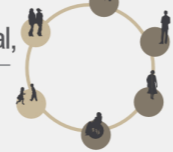


Vegetable cultivation

GRAZING ZONE



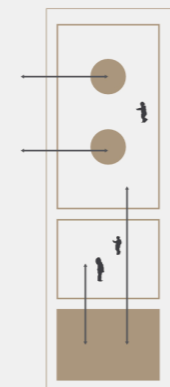
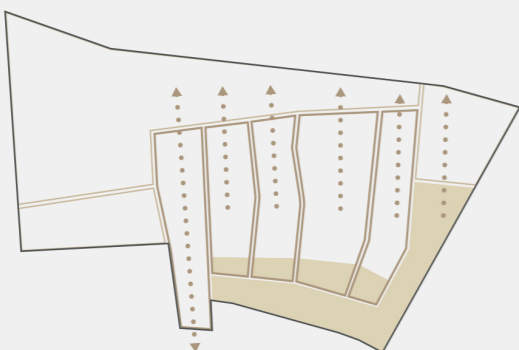
Pedagogical, therapeutic



Added productive value



GARDEN ZONE



Educational, productive, therapeutic

