

FRAMING THE HEDGE

WEAVING KIN & COMMUNITY



Country/City

University / School

Academic year

Title of the project

Authors

Canada/Calgary

University of Calgary/ School of Architecture, Planning and Landscape

2022-23

Framing the Hedge: Weaving Kin and Community

Erin Schwab

TECHNICAL DOSSIER

Title of the project	Framing the Hedge: Weaving Kin and Community
Authors	Erin Schwab
Title of the course	LAND 614 Landscape Architecture Studio II
Academic year	2022-23
Teaching Staff	Enrica Dall'Ara and Gordon Skilling
Department / Section / Program of belonging	Master of Landscape Architecture
University / School	University of Calgary, School of Architecture, Planning and Landscape



The centrally located, historic neighborhoods of Ramsay and Inglewood revealed a seeping typology and cultural convergences that result in a network of trace entities constricted by rivers, topography, rail, and industrial remnants. Heritage status paired with its isolation has created a unique identity valued within Calgary and spurred investment that will increase residential density and connect the community through a new Light Rail Transit (LRT) line. Gaps in the connection between Ramsay and Inglewood hinder pedestrian flow, and with the projected population increase there is a need to reveal porosity by stitching together these two neighborhoods through common form and redeveloped public spaces. In the master planning phase, we envisioned to create a hedgerow system along proposed pedestrian corridors that weave the community together through a common and historically present type, converging at the future LRT Station between the two communities. The project focuses on the redevelopment of a current public park along the hedgerow, aiming to form a new community gathering space that bridges historic presence and modern development, current residents, and new. This proposed park is uniquely situated between a senior's residence, historic single-family homes, and proposed multi-family development. These convergences necessitate a public park with a strong directional spine and intergenerational design that can accommodate this community in transition.

For further information

Máster d'Arquitectura del Paisatge - UPC

Contact via email at:
master.paisatge.comunicacio@gmail.com

biennal.paisatge@upc.edu

Máster d'Arquitectura del Paisatge - UPC

Sede ETSAB - Universitat Politècnica de Catalunya

Calle Jordi Girona, 15. Edificio Omega 1-3
08034 Barcelona - Spain

COAC - Colegi oficial d'Arquitectes de Catalunya

Carrer Arcs, 1-3
08002 Barcelona - Spain

12th International Biennial Landscape Barcelona

Barcelona November 2023

SCHOOL PRIZE

Mending Through Connection

Hedgerows weavethrough the cultural network identified in analysis. The shared pathway system converges at the anticipated footprint of the new LRT Line Station.

-  PEOPLE-FOCUSED PATCH
Spaces of Congregation and Transition
-  ECO-FOCUSED PATCH
Spaces of Focused Urban Ecological Remediation
-  MULTI-MODAL CORRIDOR
Routes Defined by Pedestrian and Wheeled Traffic
-  HEDGE SCREEN
Routes Further Defined by Shelter and Sense of Enclosure Through Vegetation
-  COMMERCIAL BUILDINGS
-  RESIDENTIAL BUILDINGS
-  NODE SUPPORT BUILDINGS



Fragmentation

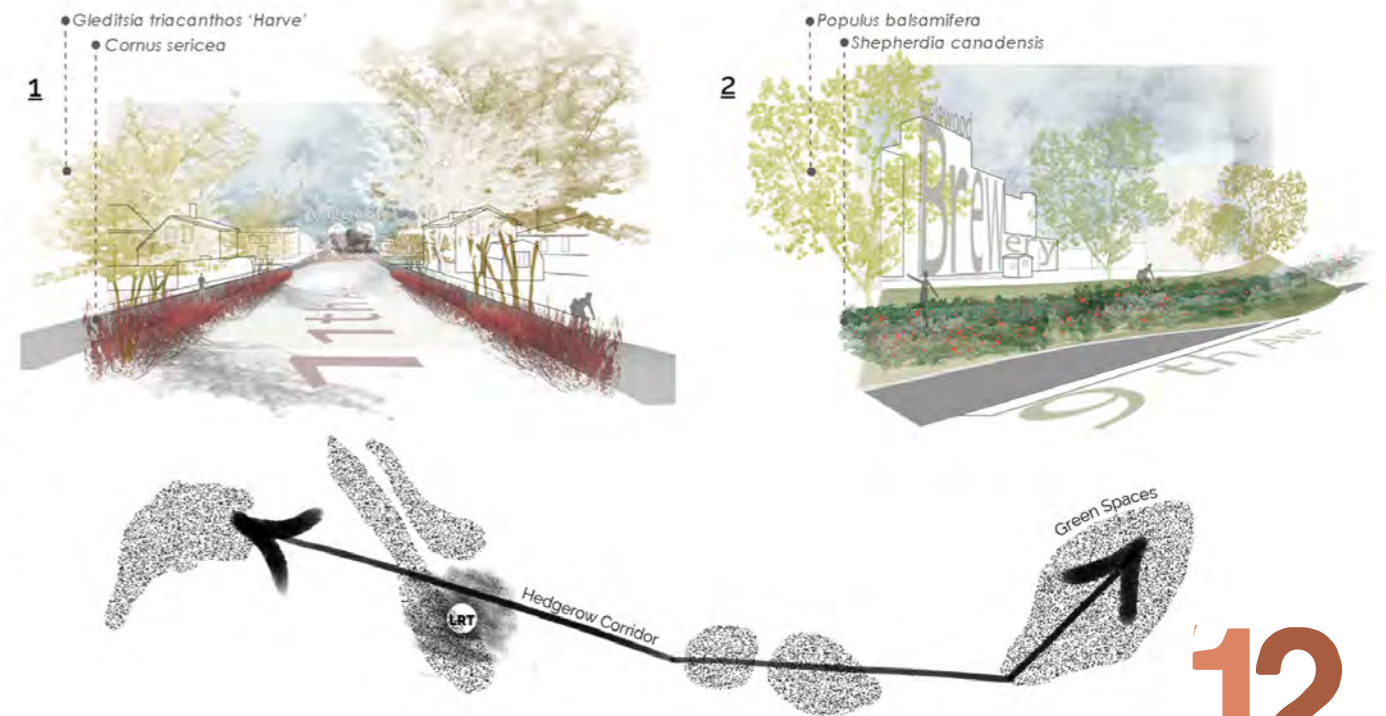
The analysis identified a seeping typology and cultural convergences that result in a network of trace entities constricted by bottlenecks, edges, and transient senses of enclosure. Gaps in this network were identified and the need for an East-West multi-modal framework to stitch these isolated communities together that would support future development.



Panel collaboration with Astrid Levert and Traci Berg

Connection through Hedgerows

Development of an urban hedgerow system as a semi-permeable screen that provides protection from harsh environmental and urban conditions, offers habitat continuity and biodiversity, while defining a sense of scale and continuity specific to the community's historic identity.



A Point of Transistion

Situated along the Hedgerow, between historic structures and new development, the redesigned public park is a site of convergence blending intergenerational uses and pedestrian movement through and around the park.



Circulation & Relationship to Current and Proposed Development

Shaped by dead ends and street directional shifts, the park design responds to changes in circulation due to new development while meeting the program needs of the conjoined senior residences and current playground use.



Intergenerational Design for a Community in Transistion

- 1 Seniors Residence
- 2 Woodstone Studio
- 3 Residential
- 4 Brewery-Rail Development
- C Family Table Shelter
- D Wood Benches
- E Raised Vegetable Beds
- F Balance Beams
- G Snake Rail

- Pp *Picea pungens*
- Pd *Populus deltoides*
- Msr *Malus 'September Ruby'*
- Shl *Sorbus hybrida L. 'Oak leaf'*
- Fo *Forsythia ovata 'Northern Gold'*
- Nt NaturesTurf (Eagle Lake Nursery)
- Ca *Cornus alba 'Prairie Fire'*
- Cl *Cotoneaster lucidus*
- Vt *Viburnum Trilobum 'Bailey Compact'*
- Pb *Prunus bessyi*
- Ra *Ribes rubrum alba cv.*
- To *Thuja occidentalis 'Brandon'*



1:1000

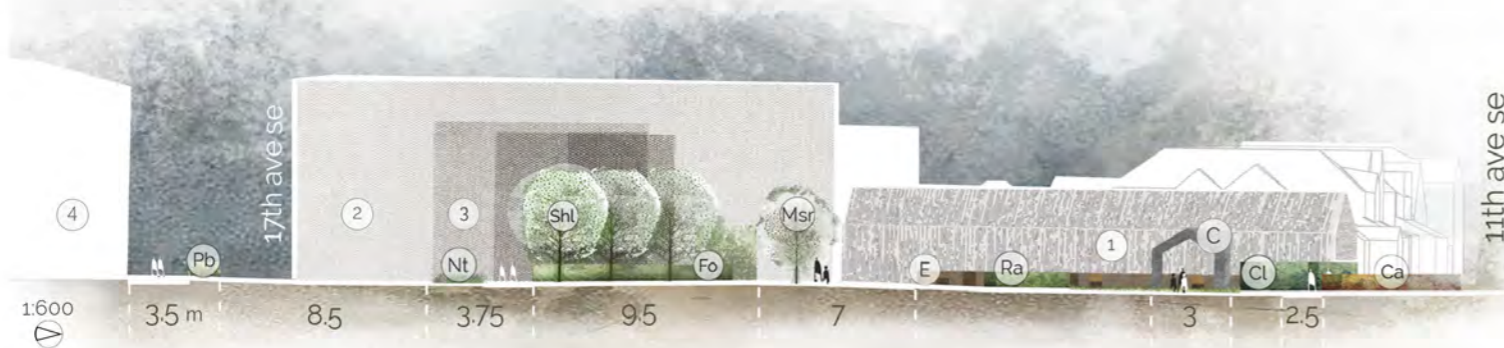
Weaving Kin & Community



Perspective facing west. On a spring morning, the apple trees and currant hedges are in bloom. The garden beds have been cleared and are ready for seed.



Perspective facing north. A fall sunset, the hedges are starting to show their fall color. The park is busy as extended families gather at the end of the day to enjoy the last of the warm weather.



Mixed-Use Design

Park programming weaves social and physical needs across generations. The 'Snake Rail' is inspired by a child's fine motor skill toy upscaled to provide physiotherapy equipment for the Senior's Residence. Raised Vegetable Beds include seating along with the Family Table Shelter to encourage community interaction and support families coming together.

- | | |
|----------------------------|---------------------------------------|
| 1 Seniors Residence | Ca Cornus alba 'Prairie Fire' |
| 2 Woodstone Studio | Cl Cotoneaster lucidus |
| 3 Residential | Fo Forsythia ovata 'Northern Gold' |
| 4 Brewery-Rail Development | Msr Malus 'September Ruby' |
| C Family Table Shelter | Nt NaturesTurf (Eagle Lake Nursery) |
| E Raised Vegetable Beds | Pb Prunus bessyi |
| F Balance Beams | Pd Populus deltoides |
| G Snake Rail | Pp Picea pungens |
| A Red Holland Pavers | Ra Ribes rubrum alba cv. |
| B Crushed Rundle | Shl Sorbus hybrida L. 'Oak leaf' |
| | To Thuja occidentalis 'Brandon' |
| | Vt Viburnum Trilobum 'Bailey Compact' |