

TECHNICAL DOSSIER

Title of the project	Across the Line - a transboundary river, the case of Baqa-Jett
Authors	Salma Abu Ubied
Title of the course	Final Project - Studio70
Academic year	Fourth 4
Teaching Staff	Prof. Barbara Aronson, Prof. Daphna Greenstein, Alisa Braudo, Tamar Darel Fossfeld
Department / Section / Program of belonging	Faculty of Architecture and Urban Planning, Landscape architecture department
University / School	Technion - Israel Institute of Technology



Written statement, short description of the project in English, no more than 250 words

Within the complex reality of the State of Israel, physical and mental boundaries have become an integral part of the daily landscape. Within Israel and the West Bank, there are 15 transboundary rivers that have been subjected to pollution for years, endangering humans and ecosystems on both sides of the Separation wall.

The project examines the case of the Hadera River as a transboundary stream, flowing from Jenin, passing the separation wall adjacent to Baqa-al-Gharbia, and continuing to the sea.

Along with the broad view of the stream, the project will focus on the area where the stream crosses the Separation wall with Baqa-al-Sharqiyah in the east, to Baqa-al-Gharbiyya and Jett in the west, examining the sources of pollution in it, the populations surrounding it, and the various barriers it encounters. The area of focus, which used to belong to a single town before being divided by the wall, mainly consists of private agricultural or restricted lands near the wall.

The project proposes a rehabilitation plan for the stream in this area, emphasizing cooperation between the villages on both sides of the separation wall. The restoration will occur in stages, utilizing nature-based solutions such as constructed wetlands. While the stream serves as the main connector, the separation wall as the main the source of conflict.

The plan considers the need for urban development in Baqa-Jett as a case of Arab Villages' shortage of lands while carefully examining its characteristics and the potential stages for change, trying to find a balance between the necessity for development and people's attachment to their private lands.

For further information

Máster d'Arquitectura del Paisatge - UPC

Contact via email at:
master.paisatge.comunicacio@gmail.com

biennal.paisatge@upc.edu

Máster d'Arquitectura del Paisatge - UPC

Sede ETSAB - Universitat Politècnica de Catalunya

Calle Jordi Girona, 15. Edificio Omega 1-3
08034 Barcelona - Spain

COAC - Colegi oficial d'Arquitectes de Catalunya

Carrer Arcs, 1-3
08002 Barcelona - Spain

12th International Biennial Landscape Barcelona

Barcelona October 2023

SCHOOL PRIZE

ACROSS THE LINE

A transboundary river, the case of Baqa-Jett

Within the Lines

Transboundary Rivers

- Hadera Stream
- Rivers
- The Green Line
- Separation Wall



Crossing Points

Israeli Checkpoints



Area of Focus

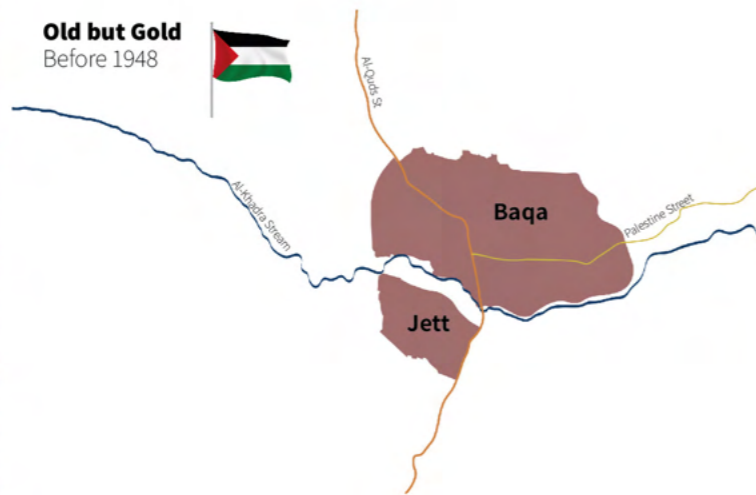
There are no official checkpoints in the area of Hadera stream.



A trip down the memory lane

A town, A river, A wall

Old but Gold
Before 1948



Separated
2003-2004



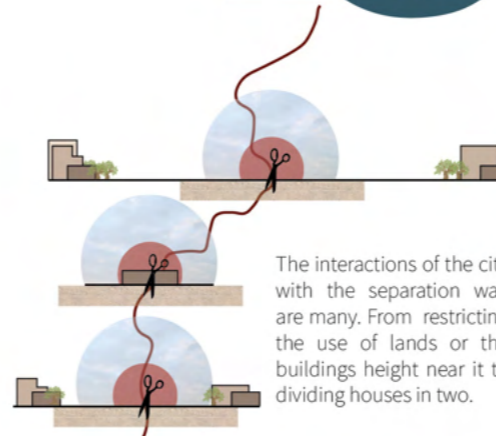
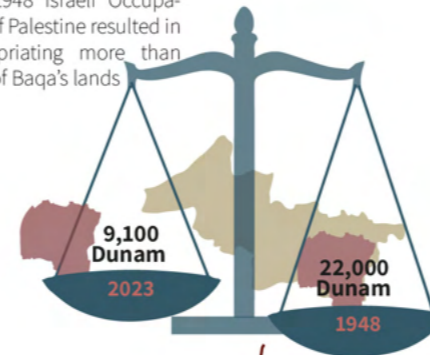
Restricted
2005-Today



Where are OUR lands?

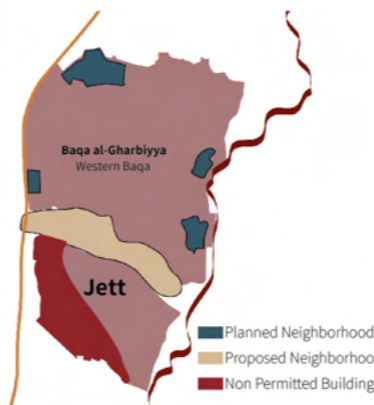
Occupied, Restricted, Expropriated

The 1948 Israeli Occupation of Palestine resulted in expropriating more than 40% of Baqa's lands



The interactions of the city with the separation wall are many. From restricting the use of lands or the buildings height near it to dividing houses in two.

As a result of the many restrictions surrounding the cities of Baqa and Jett, 44 thousands residents find themselves without any hope for future development in their own private lands. As a result of that, many people tend to build their future homes on their non-permitted lands while risking the threats to demolish them by the government

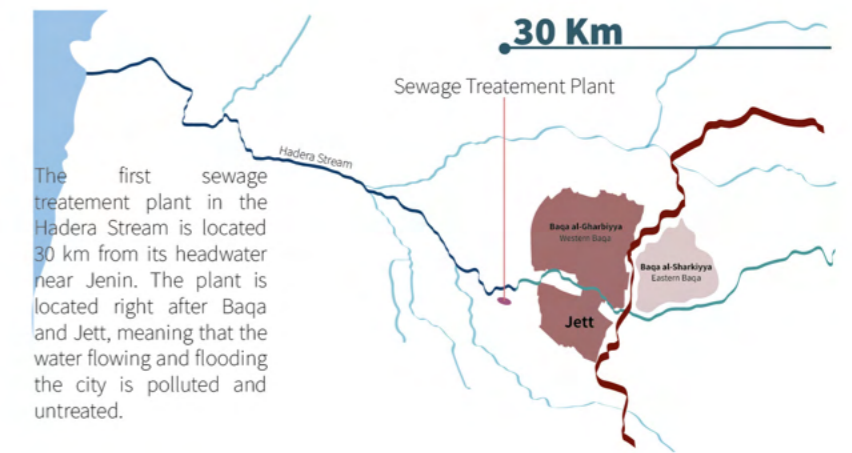
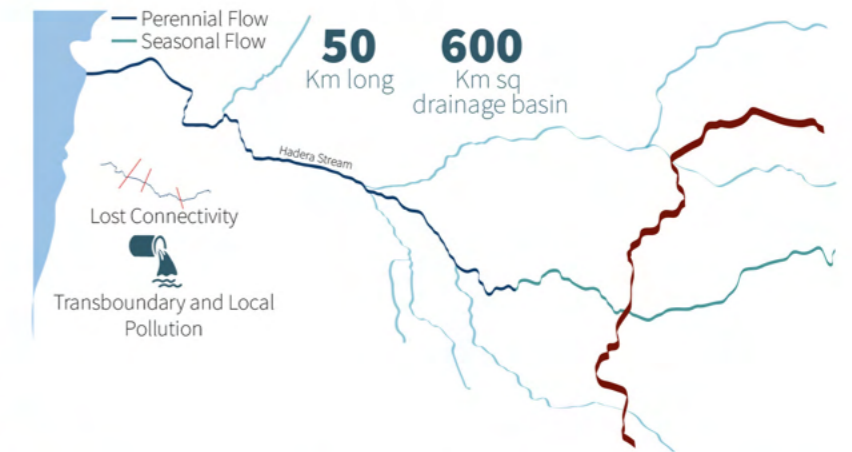


The Planning discrimination in both towns led to a shortage in recreational areas. A total of 25 dunam of open public spaces for 44 thousands residents in both towns, compared to a minimum of 2.2 thousand dunams for 100 thousand residents in Hadera.

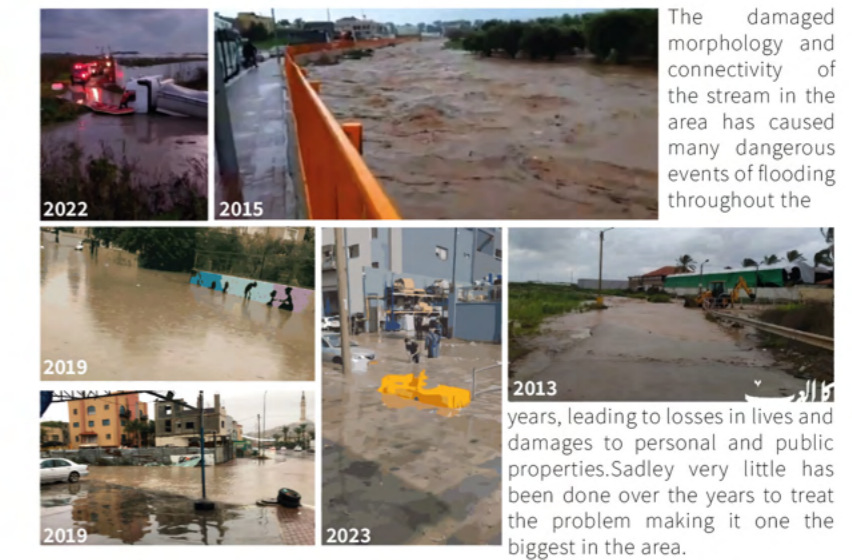


The Stream

Between the danger of pollution and the need for connectivity



The first sewage treatment plant in the Hadera Stream is located 30 km from its headwater near Jenin. The plant is located right after Baqa and Jett, meaning that the water flowing and flooding the city is polluted and untreated.



The damaged morphology and connectivity of the stream in the area has caused many dangerous events of flooding throughout the

years, leading to losses in lives and damages to personal and public properties. Sadly very little has been done over the years to treat the problem making it one the biggest in the area.

A Connector - A Separator

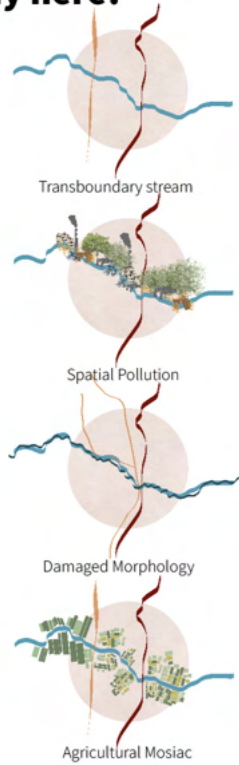
Proposing a new look at the area and its components. Between a connecting stream and a separating wall.



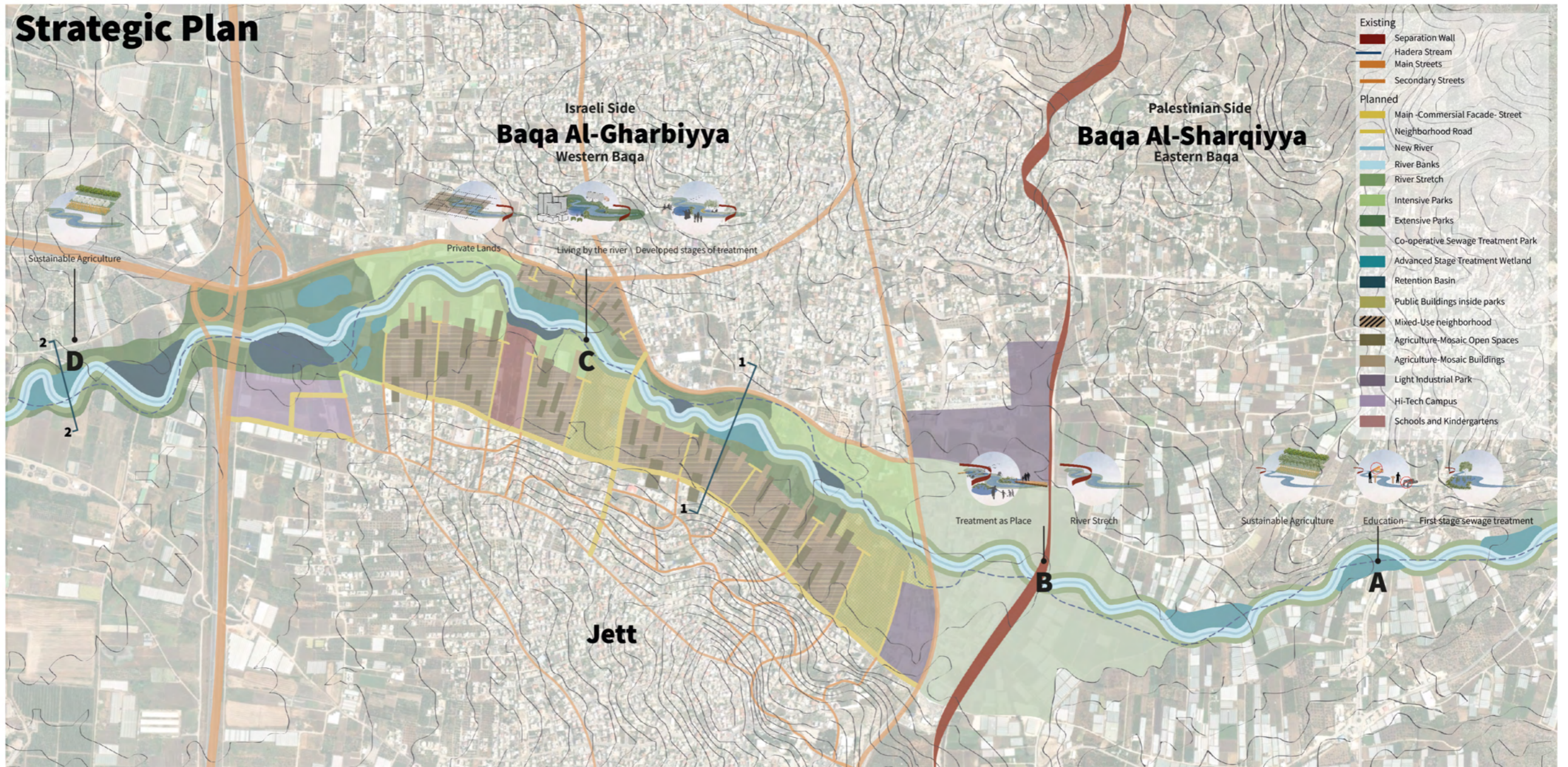
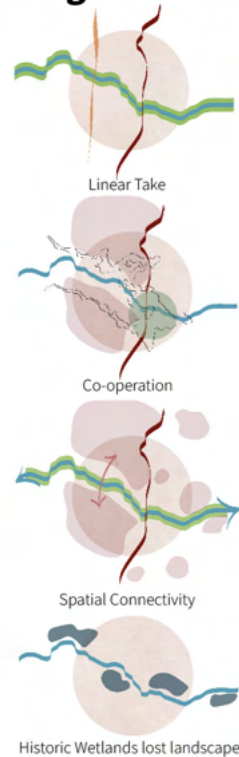
Across The Line A transboundary River, The case of Baqa-Jett Abu Nar [Hadera] Stream as the backbone of the spatial connectivity in the area of Baqa al-Gharbia

Challenging the physical and mental boundaries of the area while examining potential spaces for the restoration of the river, the expansion of the towns and the connection of the communities

why here?



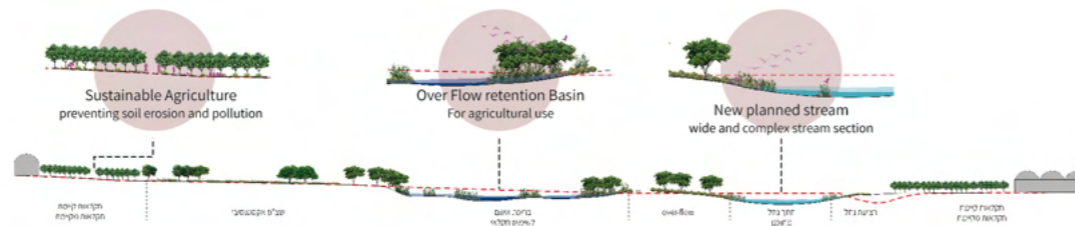
Looking Differently



Sections 1-1



2-2



Proposing new street sections where streets become a public open space for people to enjoy rather than just a technical space for transporting from one place to another.

The new streets offer a wider shaded sidewalk next to the commercial facades, a cycling lane around the area and hopefully connecting to both towns, and a street-parking free space.

Transboundary Restoration Park (Area B) proposed plan



New proposed stream channel Parking lots Water Treatment Constructed Wetlands Retention Basin Intensive open spaces Extensive river side areas Existing olive groves for conservation Public agriculture fields

Stage 1

a proposed opening in the separation wall that gives bonus areas for both sides while maintaining sight and ecology connections



Stage 2

The separation wall is starting to crack even more, sight, ecology and a possible human connectivity



Stage 3

The separation wall has officially been removed and replaced by forests, multi-functional boulder elements that take inspiration from the current materials in the area. A full connectivity for humans, animals and water. Proposing new options to what once used to be a declared war zone.



planned Orchards Public agriculture fields Farmer's Market Playgrounds Sesonal trees boulevards Full destruction of the Separation Wall Outdoor classrooms with shared deck area planned groves planned hills Retention basins Central Square Planned hills for river complexity crossings constructed wetlands existing olive groves Walkways and cycling lanes

Landscapes Of Cracks

