



Country / City Australia, Melbourne
 University / School RMIT University
 Academic year 2022
 Title of the project Patchwork Plains
 Authors Sebastian Cocks

TECHNICAL DOSSIER

Title of the project	Patchwork Plains
Authors	Sebastian Cocks
Title of the course	Design Research Project A+B
Academic year	2022
Teaching Staff	Alice Lewis, Jen Lynch, Emily Wong
Department / Section / Program of belonging	Master of Landscape Architecture
University / School	RMIT University



Written statement, short description of the project in English, no more than 250 words

Despite the Victorian Volcanic Plain being one of only 15 biodiversity hotspots in Australia, its natural temperate grasslands have been reduced to less than 1% of their pre-1788 area. This ecological decimation is due to the agricultural practices and short-sighted urbanization that followed European arrival. The result is Melbourne's sprawl, which manifests little connection to its earlier landscape conditions.

Patchwork Plains aims to reintegrate native grasslands into the city by reconnecting surviving remnant patches using ecological corridors across a large-scale network in Melbourne's western suburbs. By increasing the prevalence of the grasslands in the suburbs, a new suburban identity may be developed that increases human empathy for the ecology and generates a more ecologically and aesthetically diverse suburban fabric.

Patchwork Plains approaches grassland connection through three lenses: the emotional, the temporal and the spatial. Emotional connection connects the grasslands to and through their surrounding human community; explored through the creation of educational opportunities, increased human-grassland interactions, and new visual identities. Temporality embeds grassland genetic stock into the suburban environment. The transformation of anthropocentric suburban space to grassland-dominated space reconnects the remnants. Thus, the grassland corridors formed integrate the ecology holistically into our modern suburban framework, increasing the attachment between the city and its site.

For further information

Máster d'Arquitectura del Paisatge - UPC

Contact via email at:
master.paisatge.comunicacio@gmail.com

biennal.paisatge@upc.edu

Máster d'Arquitectura del Paisatge - UPC

Sede ETSAB - Universitat Politècnica de Catalunya

Calle Jordi Girona, 15. Edificio Omega 1-3
08034 Barcelona - Spain

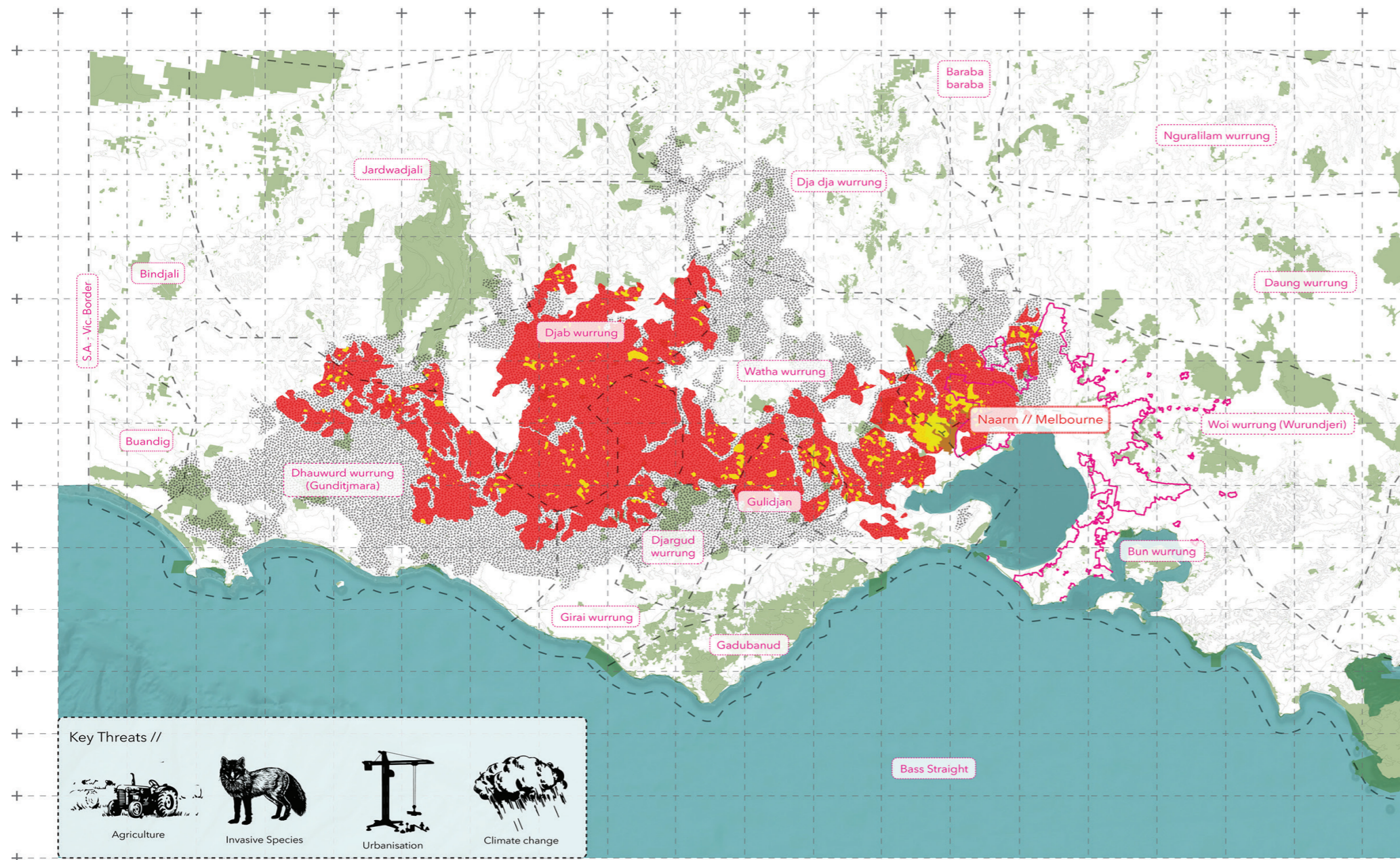
COAC - Colegi oficial d'Arquitectes de Catalunya

Carrer Arcs, 1-3
08002 Barcelona - Spain

12th International Biennial Landscape Barcelona

Barcelona November 2023

SCHOOL PRIZE

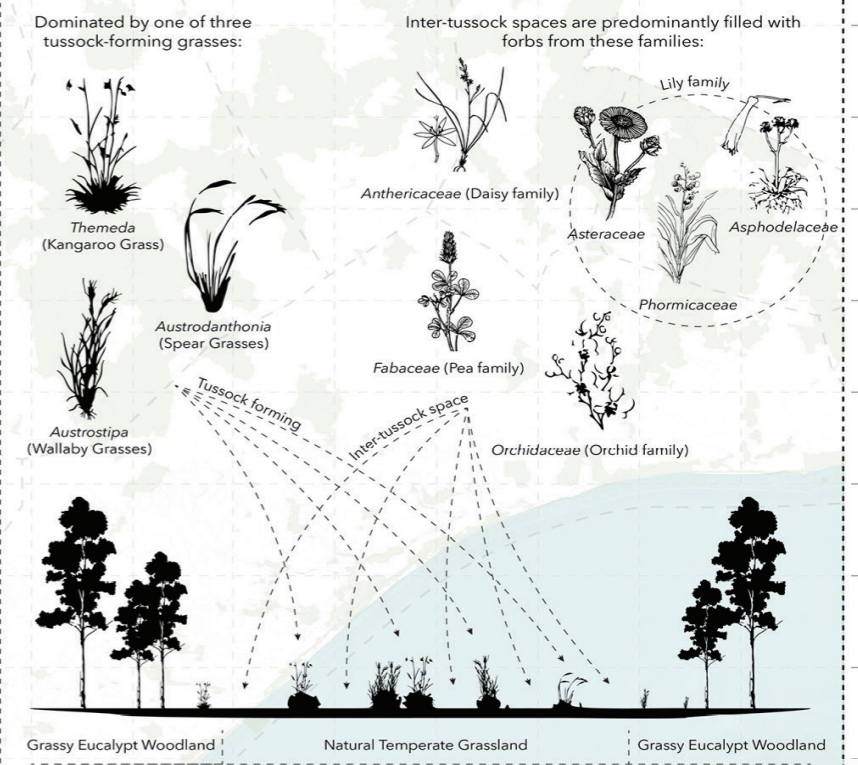


Key Threats //

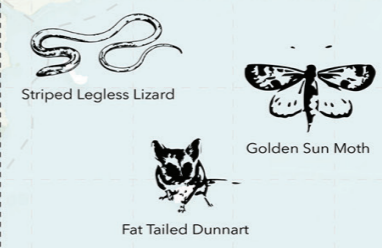
- Agriculture
- Invasive Species
- Urbanisation
- Climate change

- Indigenous language areas
- National park
- Western Grassland Reserve
- Pre-1788 native grasslands
- Current native grasslands
- Victorian Volcanic Plain
- Urban growth boundary (2015)

Natural Temperate Grassland Description //



Endangered Animal Species //

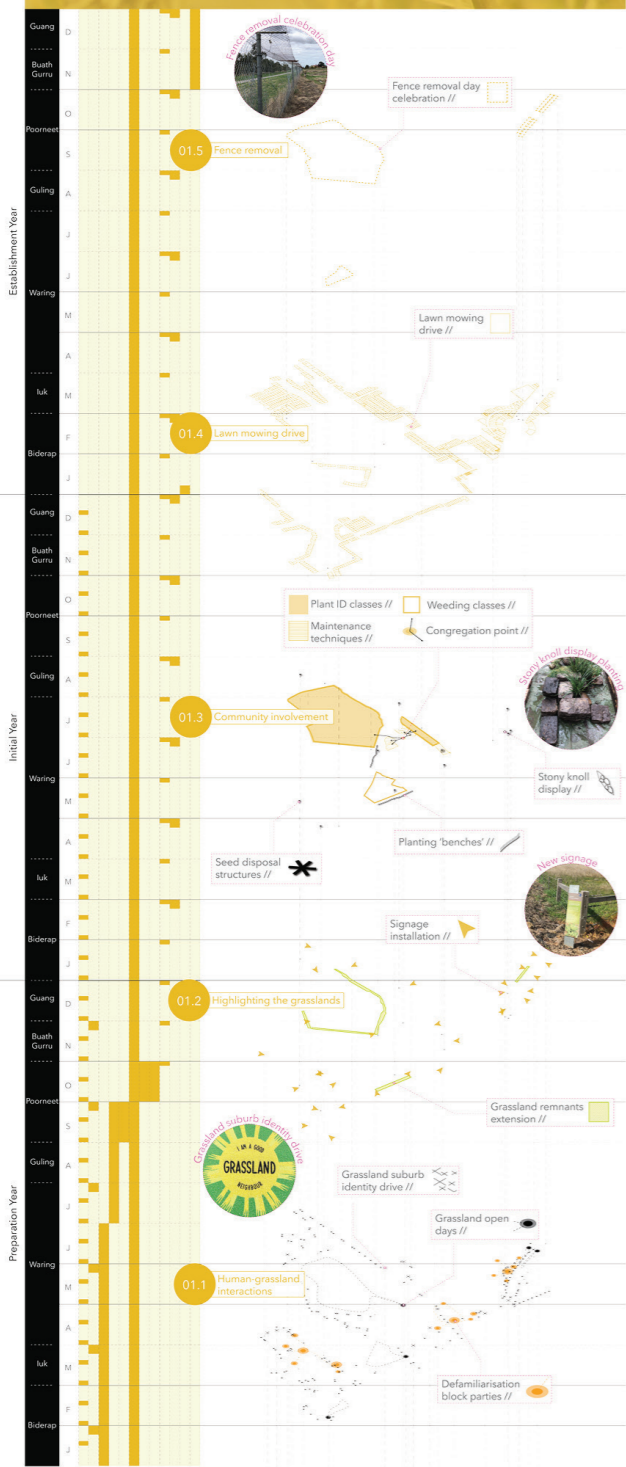


A Healthy Grassland //

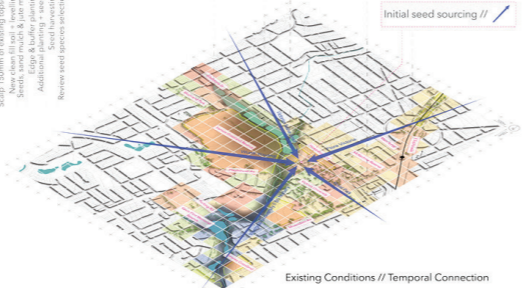
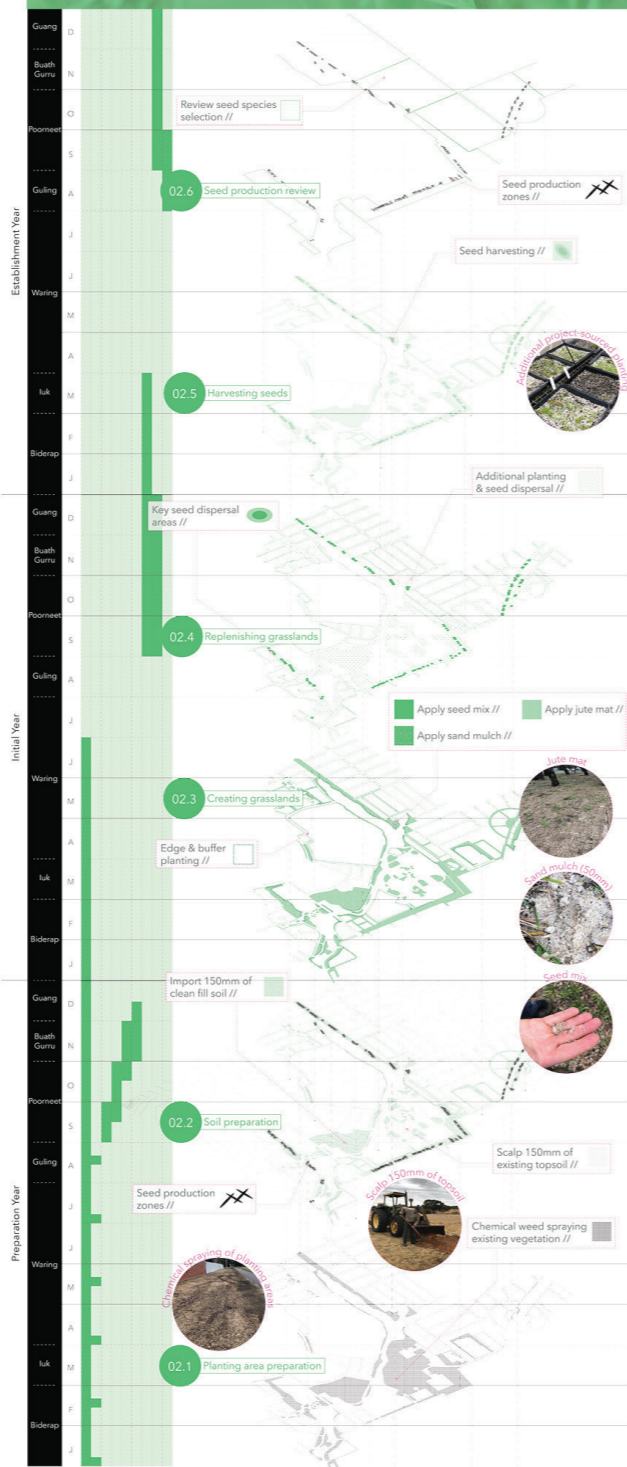




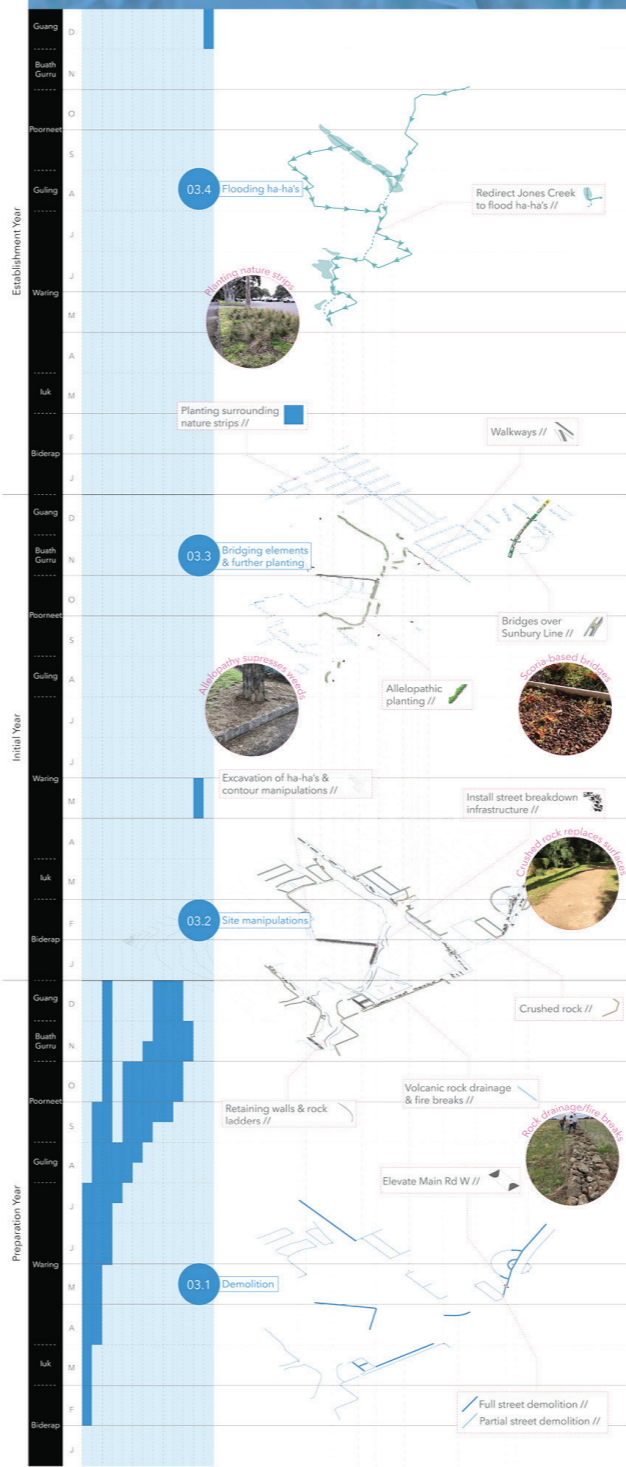
Connection Lens 01 | Emotional Connection



Connection Lens 02 | Temporal Connection



Connection Lens 03 | Spatial Connection



Maintenance

