

TECHNICAL DOSSIER

Title of the project	Volax Tinos, as a field of assemblages
Authors	Dafni Maragkou
Title of the course	Master Thesis Project
Academic year	2021
Teaching Staff	Alexios Tzompanakis
Department / Section / Program of belonging	School of Architecture
University / School	Technical University of Crete



Written statement, short description of the project in English, no more than 250 words

This project is approaching the place of Volakas in Tinos, Greece, as a field of differentiation. Volakas is characterized by its contrasting landscape, particularly its granitic formations, which exhibit a scale and extent that sets it apart from its surroundings. Additionally, it holds significance as a place of childhood memories - as an articulation of subjective interpretations.

Volakas exists as a place that is both disconnected and somehow connected to the imaginary boundaries of the island of Tinos. Its architectural footprint is indistinguishable, as the dominant force is the natural landscape itself. The eruptions and disruptions in the territory contribute to its intensity, transforming it into a landscape for destabilizing dynamics that introduce spatial synergies. This geological interior displays visible signs of disintegration and changes in space and time, manifested in the form of bumps and holes.

The intention behind exploring Volakas is to map the rhythms and qualities of space that result in destabilization or elements that are found out of balance. The dissertation employs experiments with the "real" and the "construction" to achieve this objective.

The aim is to conceptually explore the landscape and establish correlations with "primary" places, which serve as fields of analysis. This is done through routes and approaches, emphasizing the process as a tool for spatial research design. By reinterpreting the qualities derived from this specific theme, both in material and imaginary terms, the project seeks to compose a dynamic "ground" that serves as a temporary space for exploration and experimentation.

For further information

Máster d'Arquitectura del Paisatge - UPC

Contact via email at:
master.paisatge.comunicacio@gmail.com

biennal.paisatge@upc.edu

Máster d'Arquitectura del Paisatge - UPC

Sede ETSAB - Universitat Politècnica de Catalunya

Calle Jordi Girona, 15. Edificio Omega 1-3
08034 Barcelona - Spain

COAC - Colegi oficial d'Arquitectes de Catalunya

Carrer Arcs, 1-3
08002 Barcelona - Spain

12th International Biennial Landscape Barcelona

Barcelona October 2023

SCHOOL PRIZE

Motifs in Volax / plain ground - emergence of hybrid territories

CONTINUITY | gaps

GAPS | continuity

TERRAIN

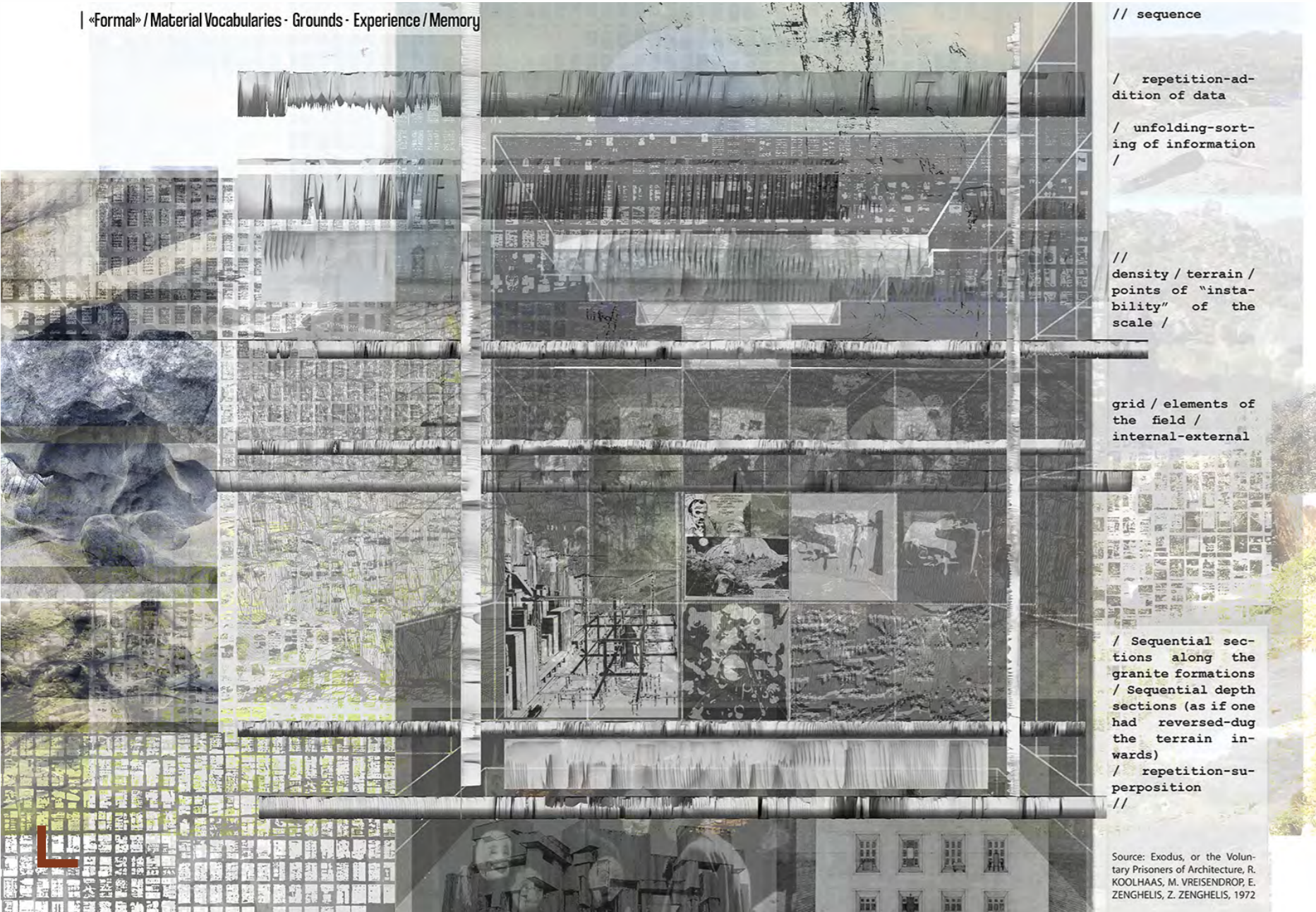


- arrangement
spools
- superimpositions /
linearities
- thickenings / dilu-
tions //

Source: Map of M. Galati, @volax.gr



«Formal» / Material Vocabularies - Grounds - Experience / Memory



// sequence

/ repetition-ad-
dition of data

/ unfolding-sort-
ing of information
/

//
density / terrain /
points of "insta-
bility" of the
scale /

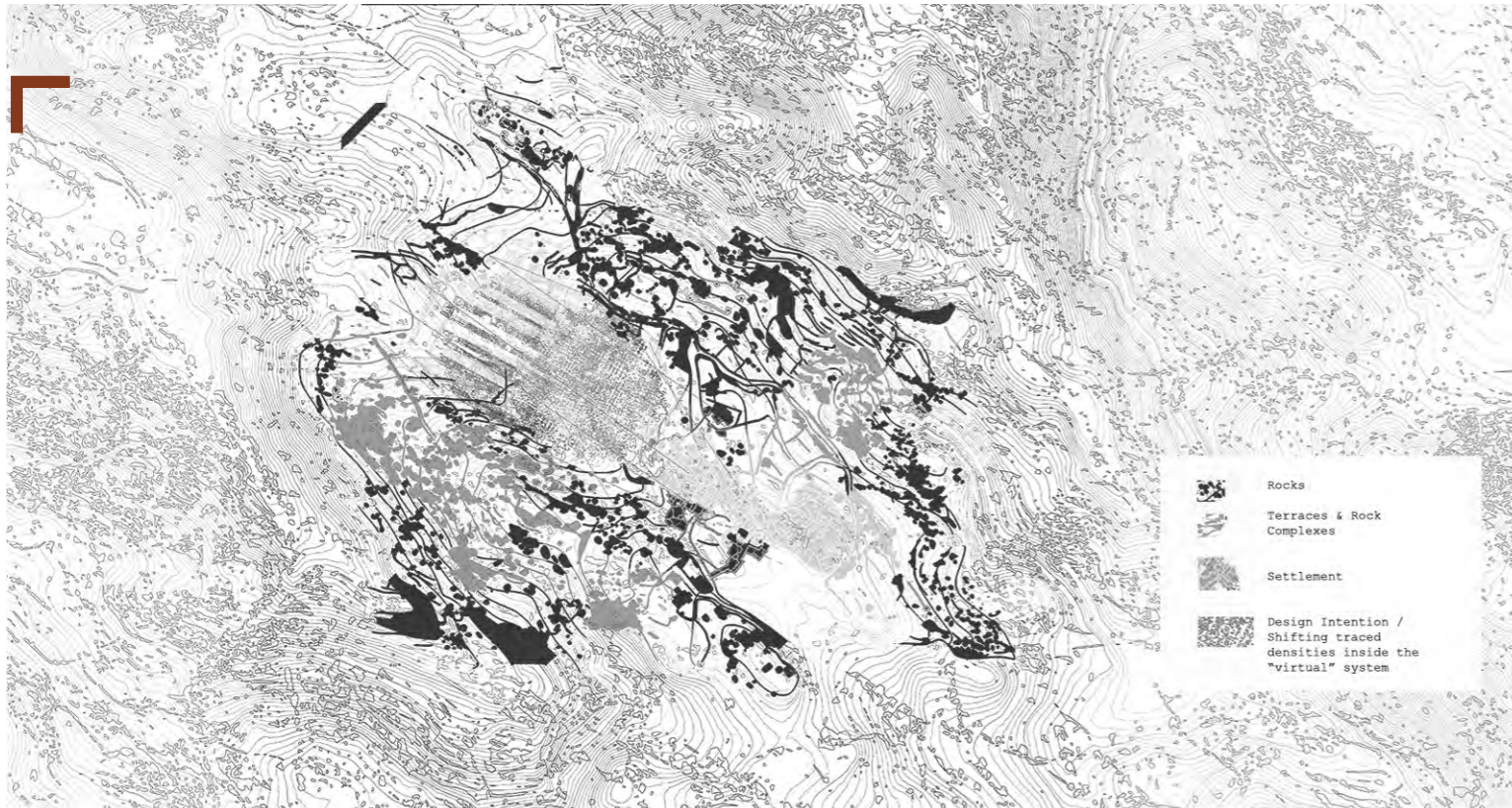
grid / elements of
the field /
internal-external

/ Sequential sec-
tions along the
granite formations
/ Sequential depth
sections (as if one
had reversed-dug
the terrain in-
wards)
/ repetition-su-
perposition
//

Source: Exodus, or the Volun-
tary Prisoners of Architecture, R.
KOOLHAAS, M. VREISENDROP, E.
ZENGHELIS, Z. ZENGHELIS, 1972

|(Dis) - (Re) - Connections



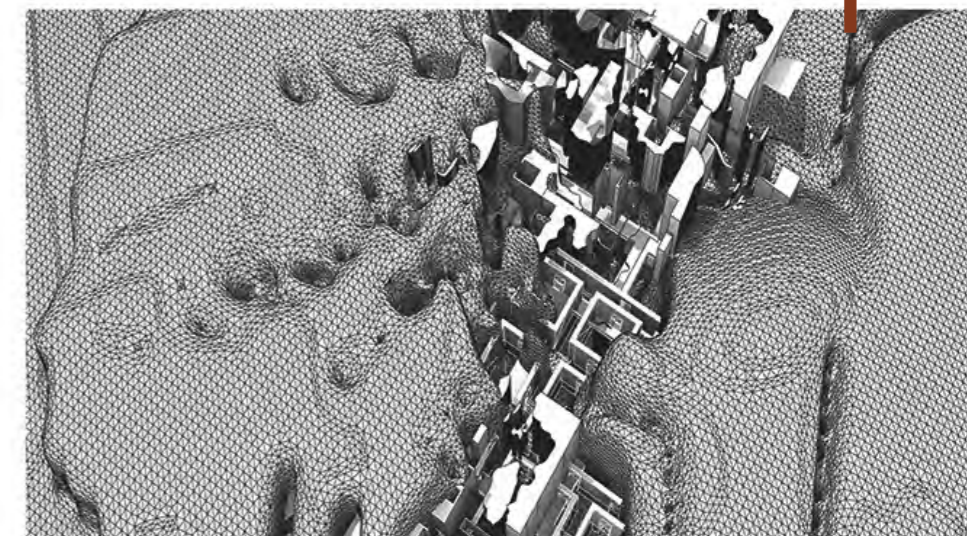
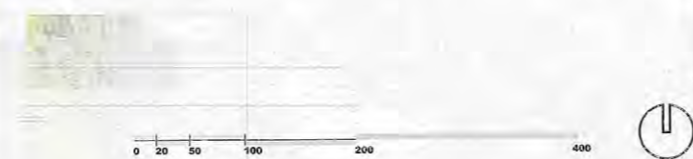


Here some elements are highlighted in black, solid, as spatial units; their scale & repetition rhythm

Source:Map of M. Galati, @volax.gr

_the settlement with these prismatic shapes
_rocks / rock complexes
_terraces / linear units of the terrain

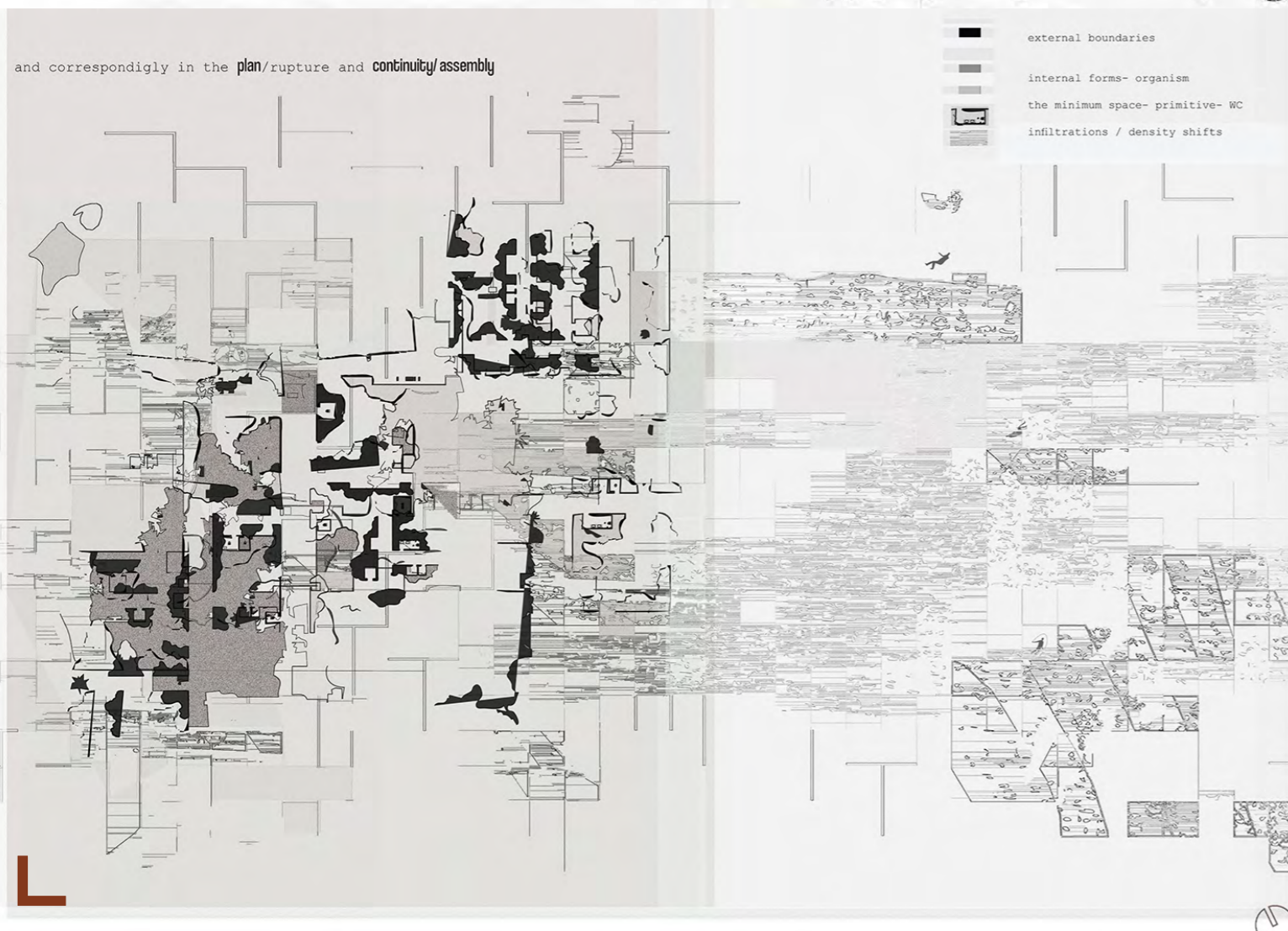
Design intention // superimposed dense points of the field, spatial units that create rhythm



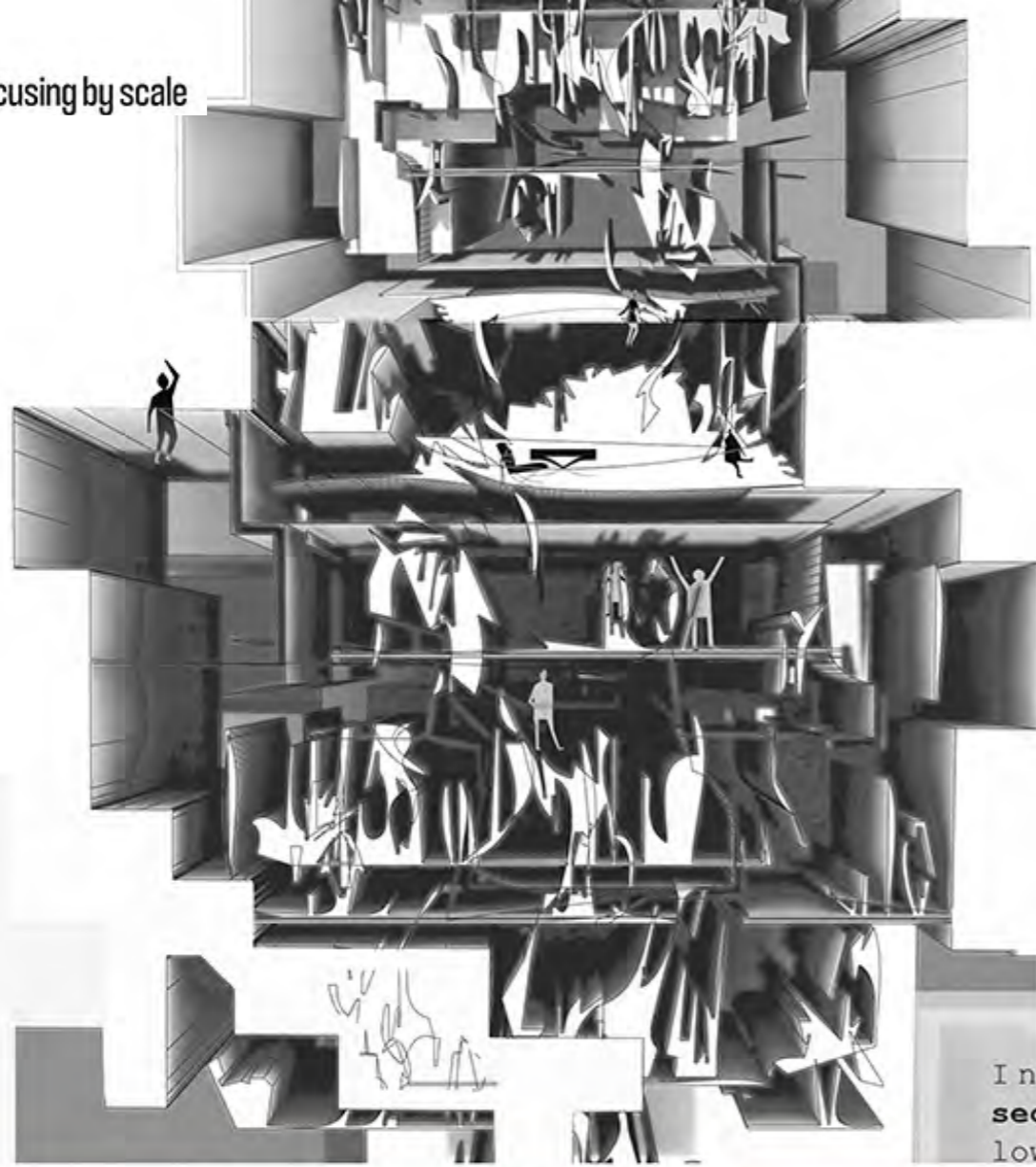
Sinking forms



Penetrations



and correspondingly in the plan/rupture and continuity/assembly



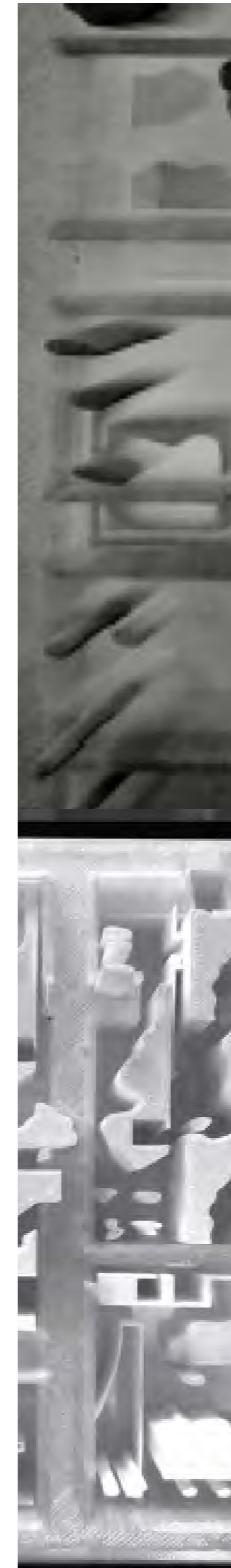
Indicative section following



a floor plan fragment

Gradient of immersions

- Solid
-
-
- Void





Country /City
University / School
Academic year
Title of the project
Authors

GREECE
TECHNICAL UNIVERSITY OF CRETE
2022-2023
MINERAL LANDSCAPE FRAGMENTS: RECONSTRUCTING QUARRY REMNANTS AT TOURKOVOUNIA HILL
ELENI FILI

TECHNICAL DOSSIER

Title of the project MINERAL LANDSCAPE FRAGMENTS: RECONSTRUCTING QUARRY REMNANTS AT TOURKOVOUNIA HILL
Authors ELENI FILI
Title of the course THESIS PROJECT
Academic year 2022-2023
Teaching Staff PANITA KARAMANEA
Department / Section / Program of belonging SCHOOL OF ARCHITECTURE
University / School TECHNICAL UNIVERSITY OF CRETE



Written statement, short description of the project in English, no more than 250 words

The area of former quarry activity of the Tourkovounia hill, within the basin of Attica, was chosen as the object of study. On the borders of two non-homogeneous municipalities, Galatsi and Filothei - Psychiko, a huge mass of stones emerges. There the landscape looks residual. The monstrous machines of the 'LATO' and 'KEKROPS' quarrying industries left their spatial footprint making any form of life inadmissible. The remaining hills stand out in complete disconnection from the urban fabric that spreads all around it. Irregular stone figures, visibly larger than human scale, take form. The urban integration of this place is deemed necessary. Through the present study, an attempt is made to assign an identity to the space, to transform it into a receiver of functions, able to contribute in terms both of collectivity and landscape, to the appropriation of public space and its participation in the creation of urban cohesion.

For further information

Máster d'Arquitectura del Paisatge - UPC

Contact via email at:
master.paisatge.comunicacio@gmail.com

biennal.paisatge@upc.edu

Máster d'Arquitectura del Paisatge - UPC

Sede ETSAB - Universitat Politècnica de Catalunya

Calle Jordi Girona, 15. Edificio Omega 1-3
08034 Barcelona - Spain

COAC - Colegi oficial d'Arquitectes de Catalunya

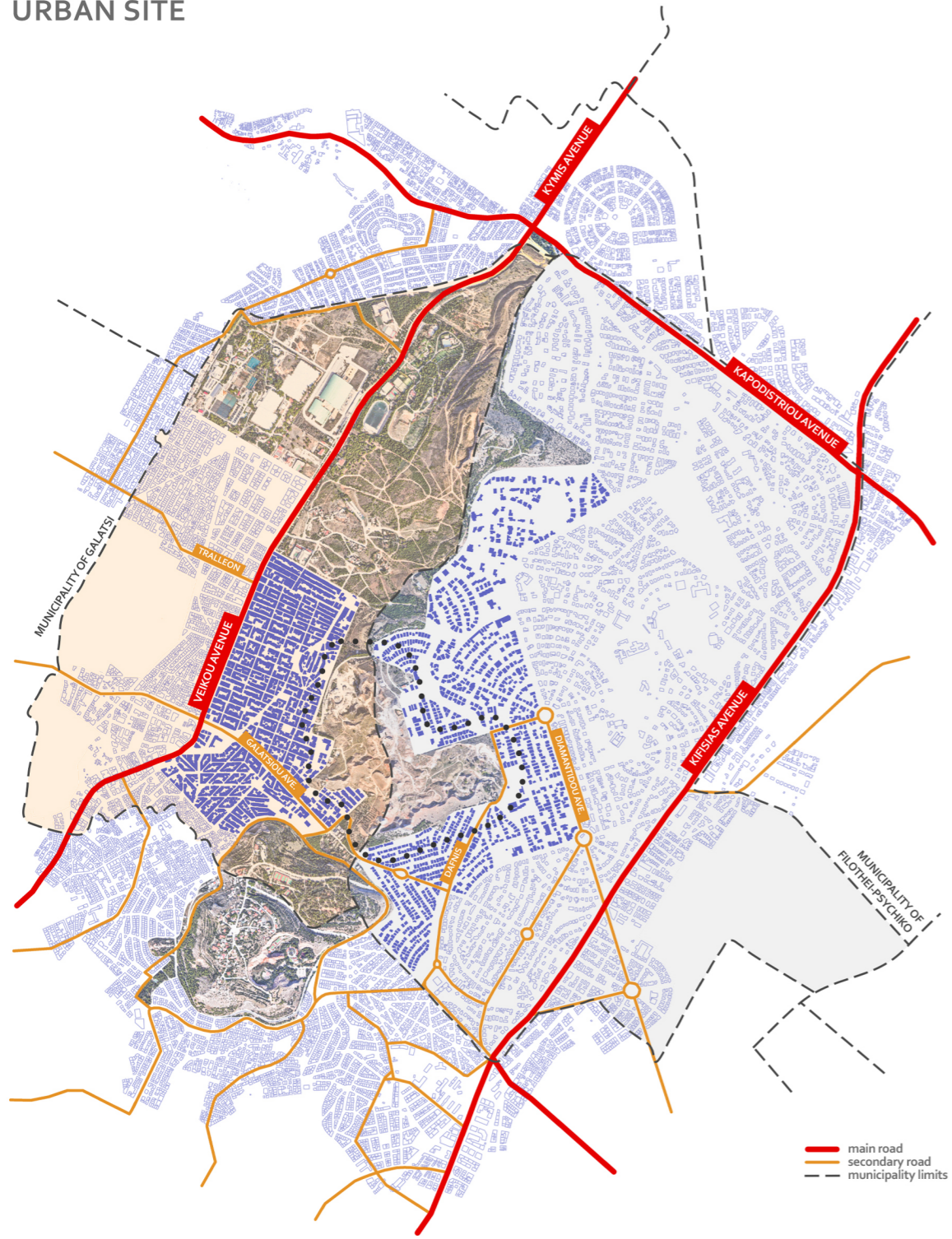
Carrer Arcs, 1-3
08002 Barcelona - Spain

12th International Biennial Landscape Barcelona

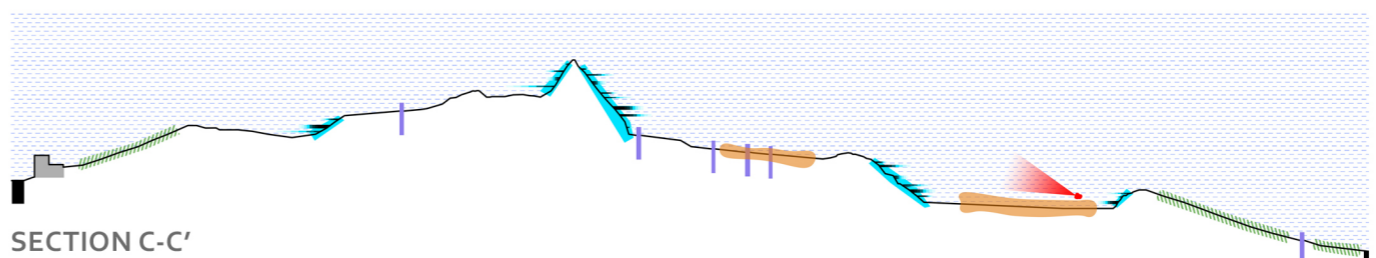
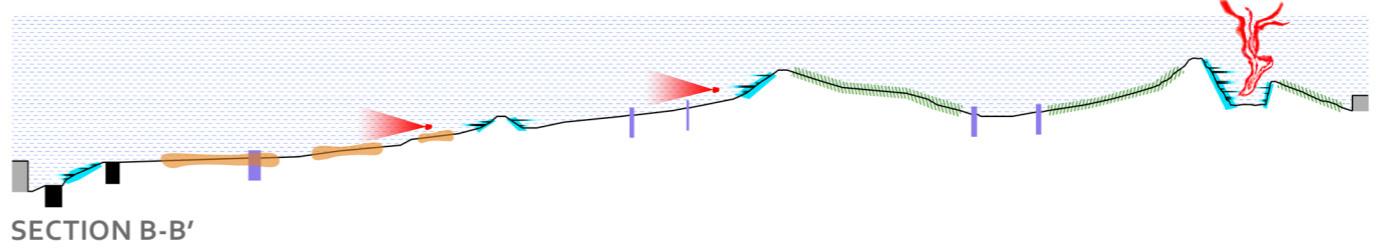
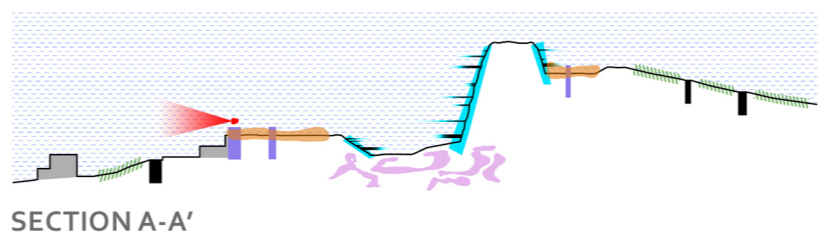
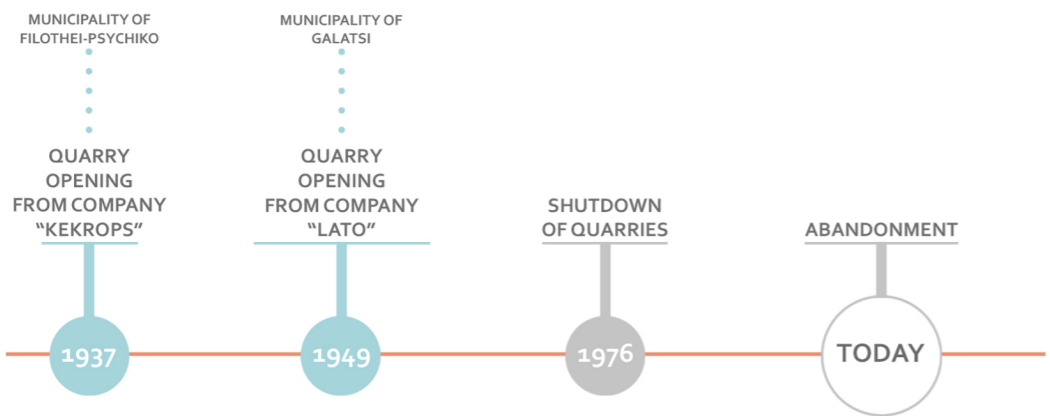
Barcelona October 2023

SCHOOL PRIZE

URBAN SITE



— main road
— secondary road
- - - municipality limits



TERRITORIAL OUTBREAKS

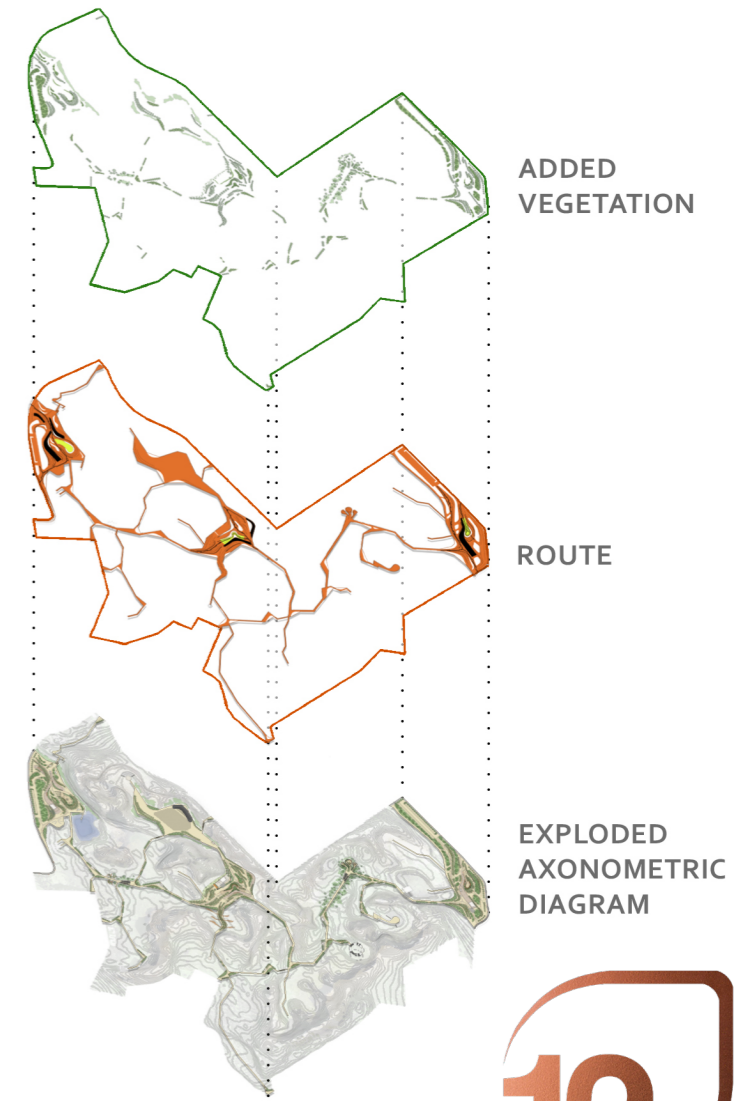


SPACIAL ANALYSIS

MASTERPLAN



- N
- ▲ main entrance
 - ▲ secondary entrance
 - route
 - 1 Galatsi municipality square
 - 2 central square
 - 3 Filothei-Psychiko municipality square
 - 4 viewpoint
 - 5 playground
 - 6 waterpark
 - 7 venue
 - 8 open-air exhibition
 - 9 open-air theatre
 - 10 rock climbing area
 - 11 motocross race track
 - 12 outdoor seating area
 - 13 forest
 - 14 viewing platform
 - 15 café-restaurant
 - 16 café
 - 17 WC
 - 18 elevator
 - 19 stair
 - 20 parking area





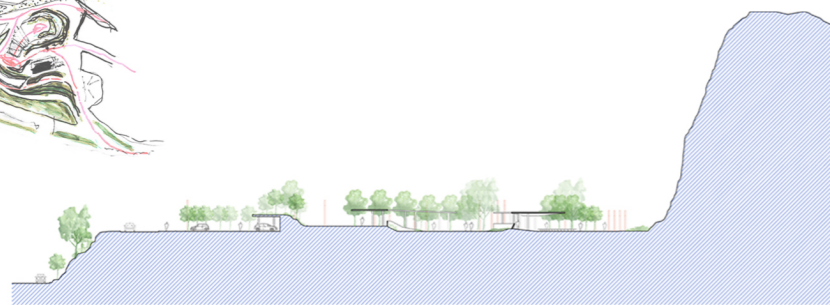
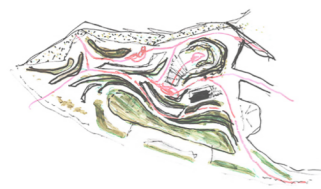
1 PLAN OF FILOTHEI-PSYCHIKO MUNICIPALITY SQUARE



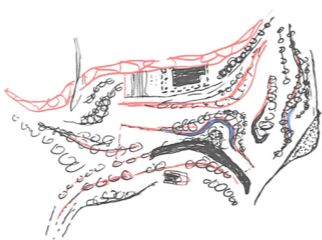
2 PLAN OF CENTRAL SQUARE



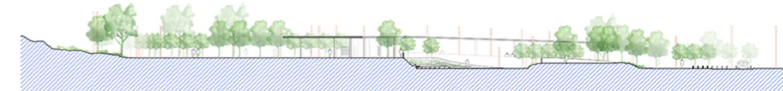
3 PLAN OF GALATSI MUNICIPALITY SQUARE



SECTION

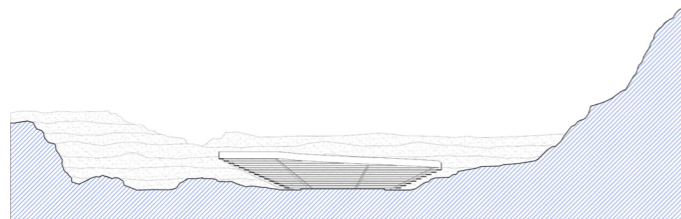


SECTION



SECTION

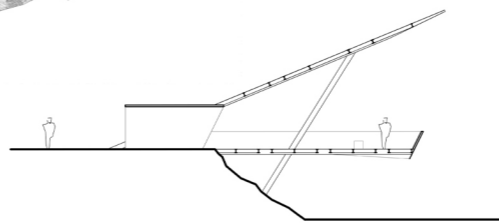
4 OPEN-AIR THEATRE



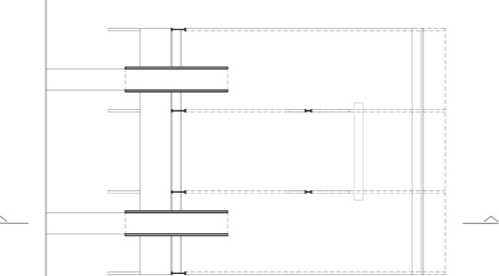
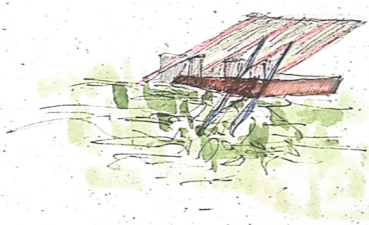
SECTION



5 VIEWPOINT

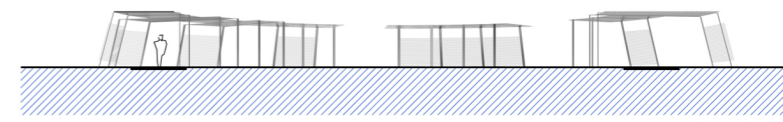


SECTION

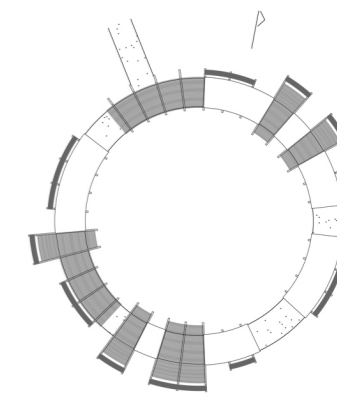
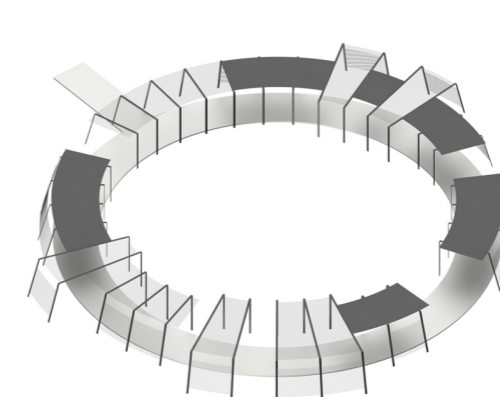


PLAN

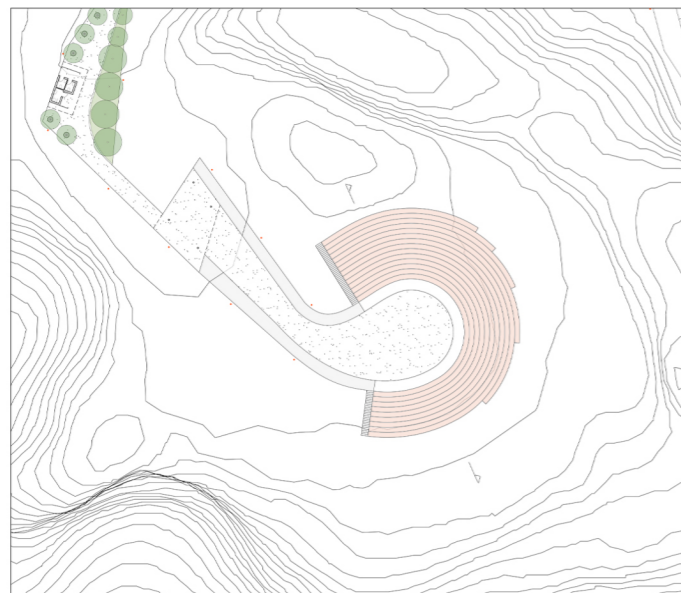
6 OPEN-AIR EXHIBITION



SECTION



PLAN



PLAN

TECHNICAL DOSSIER

Title of the project "Waterscapes: Revealing the terrain of Attika's Picrodaphne stream"
Authors Antzoulafou Christina & Kosmidi Maria
Title of the course Thesis
Academic year 2021 - 2022
Teaching Staff Karamanea Panita & Tzompanakis Alexis
Department / Section / Program of belonging Architecture school course
University / School Technical University of Crete / Architecture School



Written statement. short description of the project in English. no more than 250 words

Sacred versus Dirty, Austere versus Imprecise, Natural versus Urban, qualities separated by a strict line.

In the 20th century, this way of thinking led to compact urban expansion, building over most of Attica's rivers and streams, with the aim of strongly consolidating anthropocentric activities on site. Such movements set strict boundaries on the natural formations, unleashing their irregular behavior on the artificial surfaces. Fixed boundaries cannot withstand the changes caused by natural behavior thus leading to flooding phenomena on the one hand and ecosystem degradation on the other. This diploma thesis studies one of Attica's few remaining streams, the Picrodaphne Stream, a large-scale natural discontinuity within the urban fabric that serves as a habitat. The concept of the stream is approached as a ubiquitous moisture or dynamic force that shapes the ground, an intermediate landscape between mountain and sea that constantly expresses different intensities of the fluid element in the urban landscape. The aim of this research is the activation and interaction of artificial and natural processes to infiltrate the natural mechanisms into the compact urban network, shaping landscapes characterized by shifting terrains. The field of study is therefore the regulation of contacts between the structural and topiary domains to introduce porosity and fluidity into the solid urban terrain.

For further information

Máster d'Arquitectura del Paisatge - UPC

Contact via email at:
master.paisatge.comunicacio@gmail.com

biennal.paisatge@upc.edu

Máster d'Arquitectura del Paisatge - UPC

Sede ETSAB - Universitat Politècnica de Catalunya

Calle Jordi Girona, 15. Edificio Omega 1-3
08034 Barcelona - Spain

COAC - Colegi oficial d'Arquitectes de Catalunya

Carrer Arcs, 1-3
08002 Barcelona - Spain

12th International Biennial Landscape Barcelona

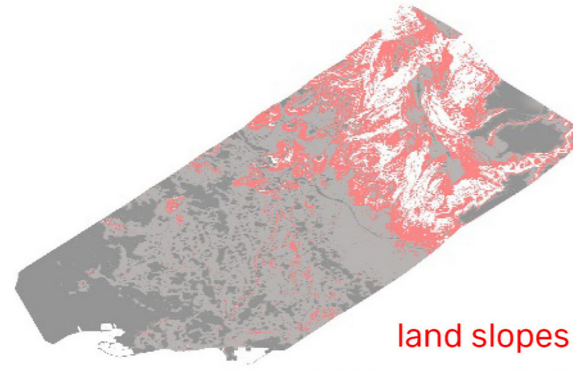
Barcelona October 2023

SCHOOL PRIZE

HYDROLOGICAL ANALYSIS

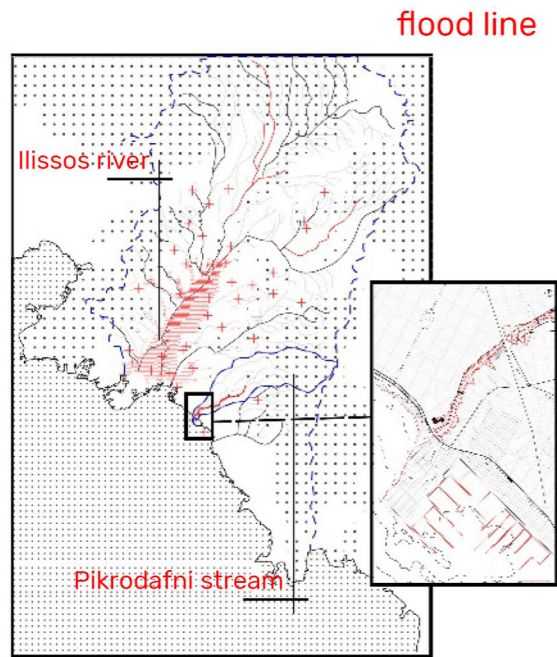


land claims

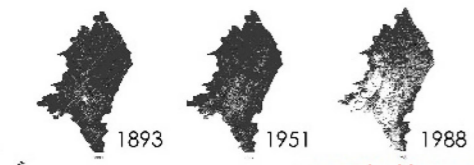


land slopes

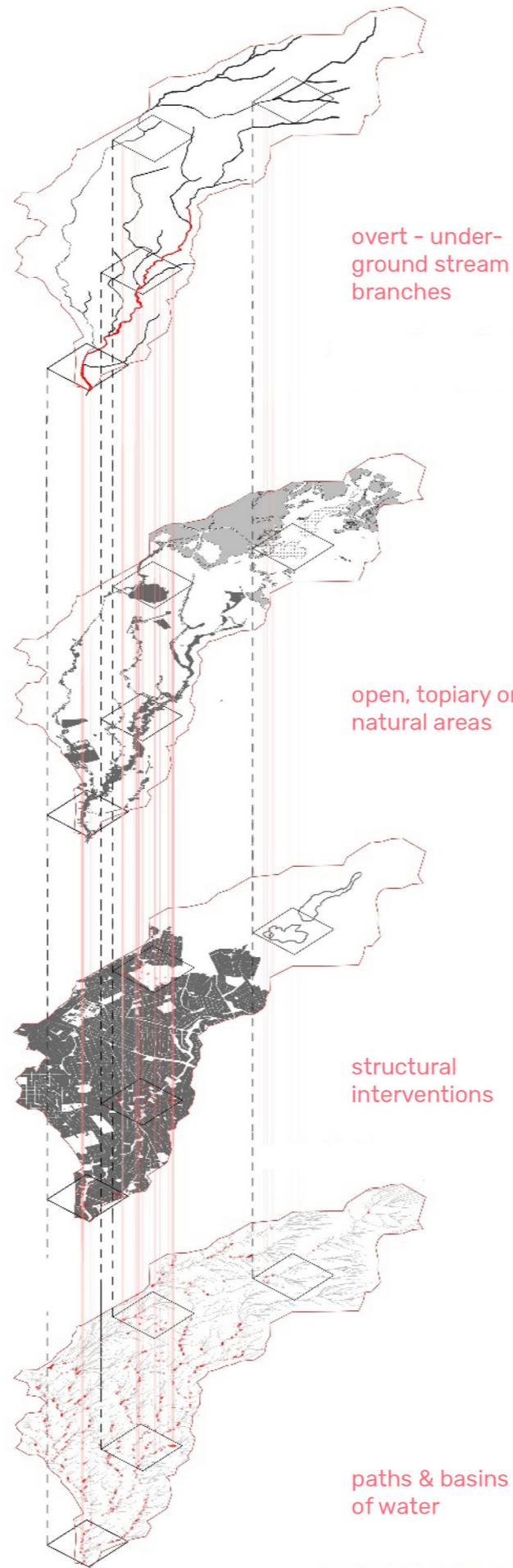
Kifisos river hydrological basin



flood line



evolution of Attica



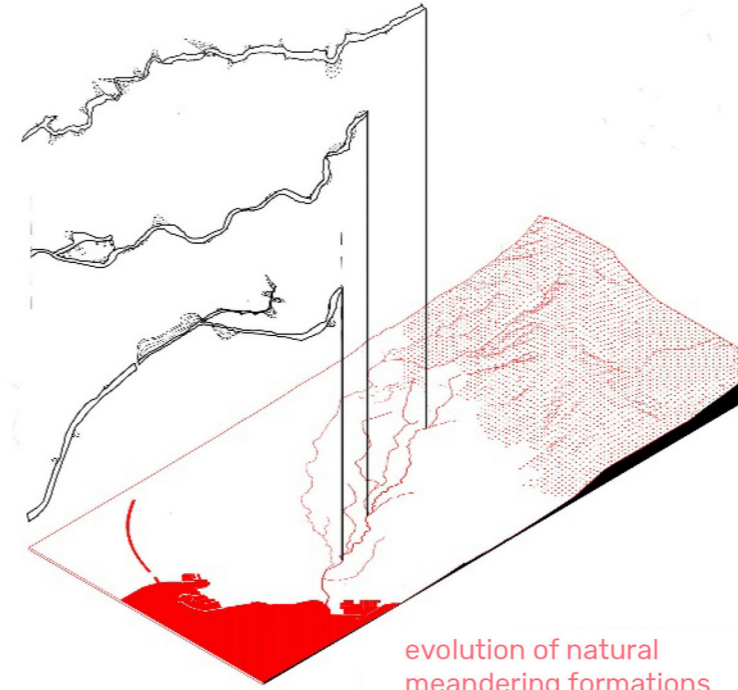
overt - underground stream branches

open, topiary or natural areas

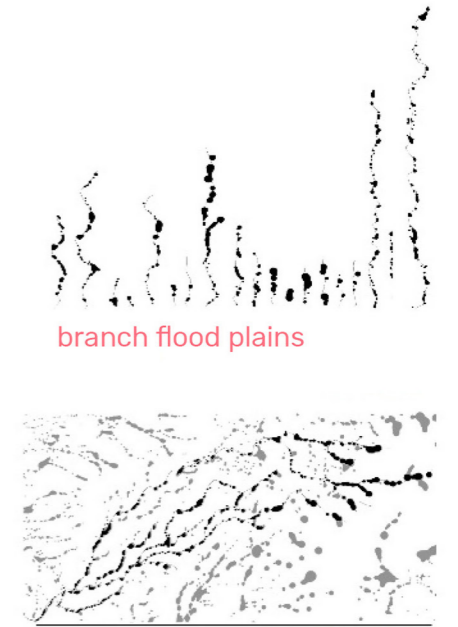
structural interventions

paths & basins of water

SOIL DRIFTS



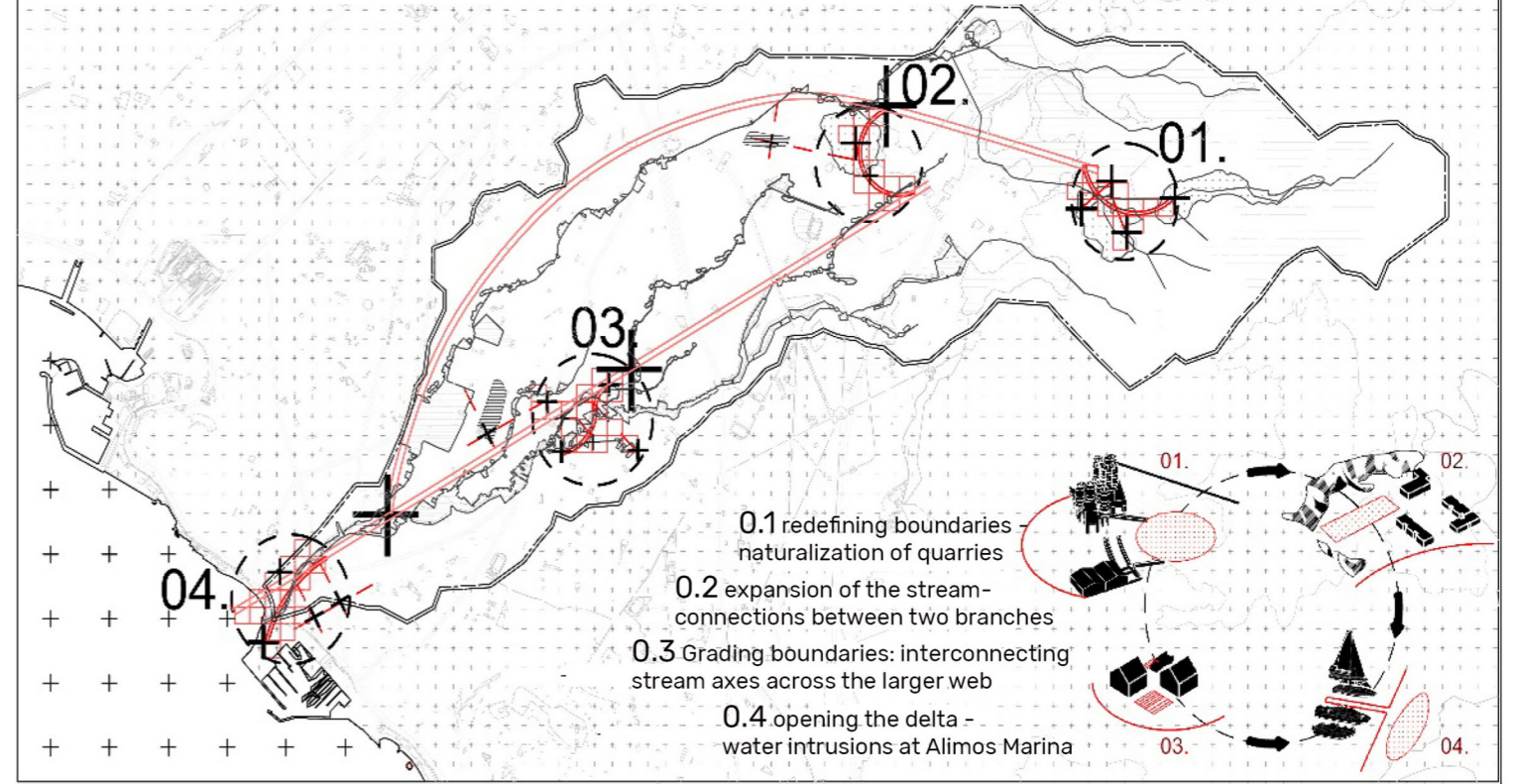
evolution of natural meandering formations



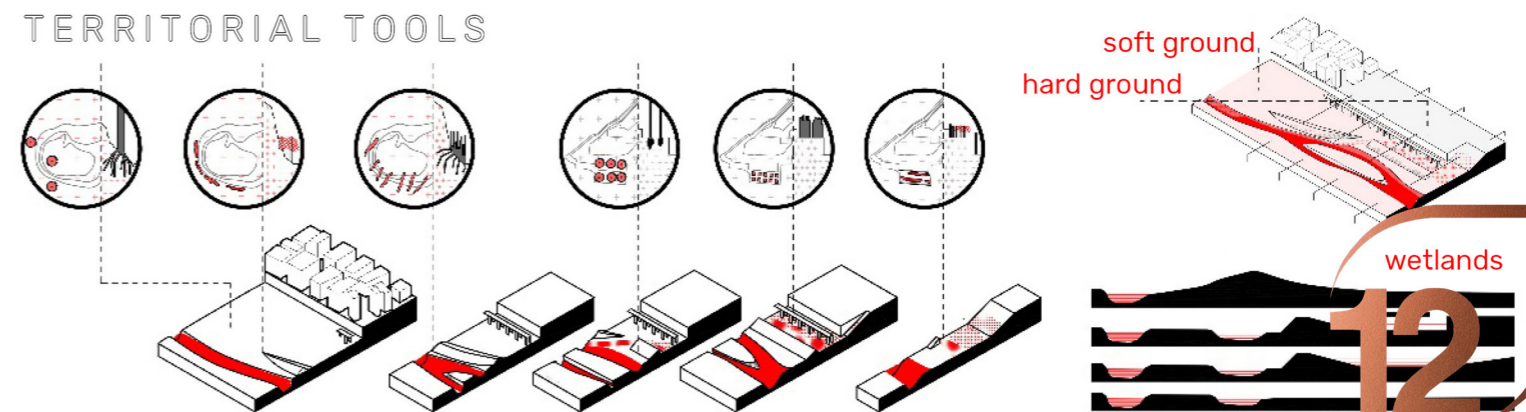
branch flood plains

non-hierarchical flood plains

FLOOD PLAIN STRATEGY ANALYSIS



TERRITORIAL TOOLS

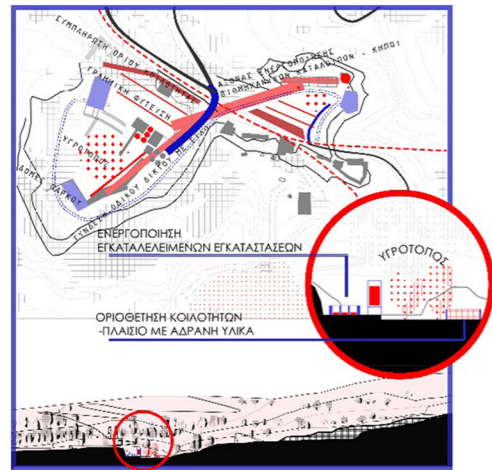
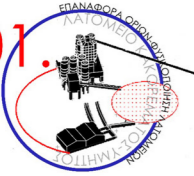


soft ground
hard ground

wetlands

Area 1: Ymittos Mountain

01.



strategy

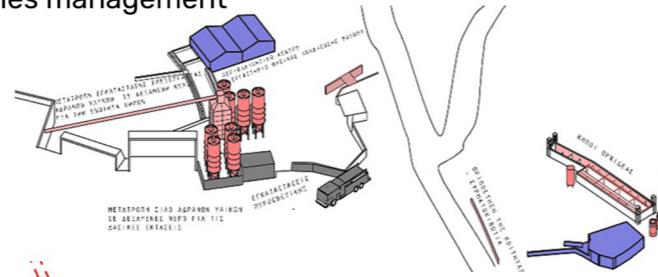
data:

- Quarry area / altered ground / extensive field of the river bed
- step terrain slope
- burnt area
- industrial remains structures

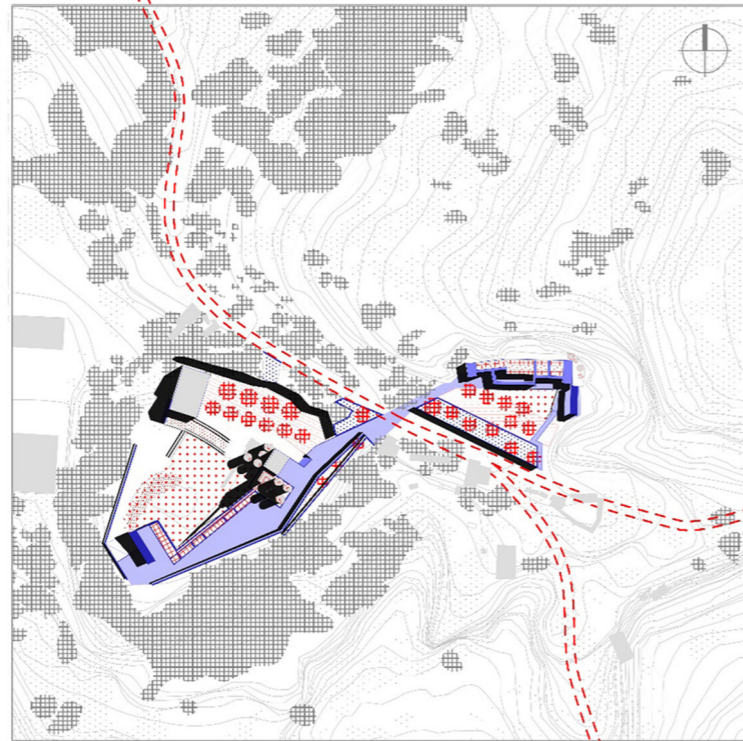
strategy:

- demarcation of riverbed / artificial embankments
- wetland formation / land restoration
- Ymittos conservation park / facilities reuse / fire protection

facilities management

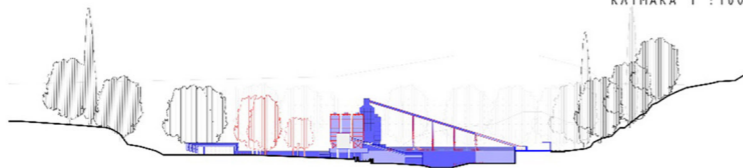


MASTERPLAN



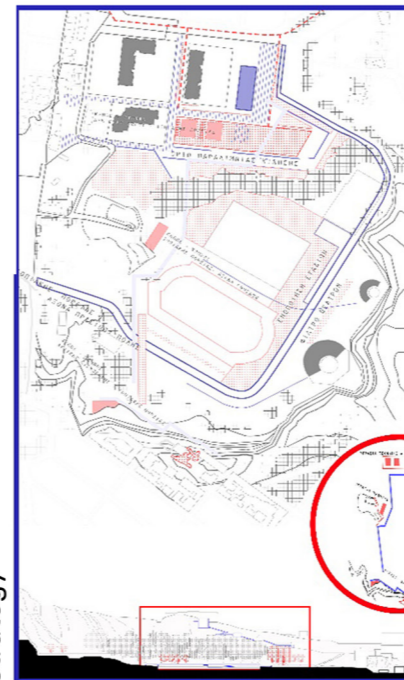
proposal

ΚΑΙΜΑΚΑ 1 : 1000



Area 2: Vironas

02.



strategy

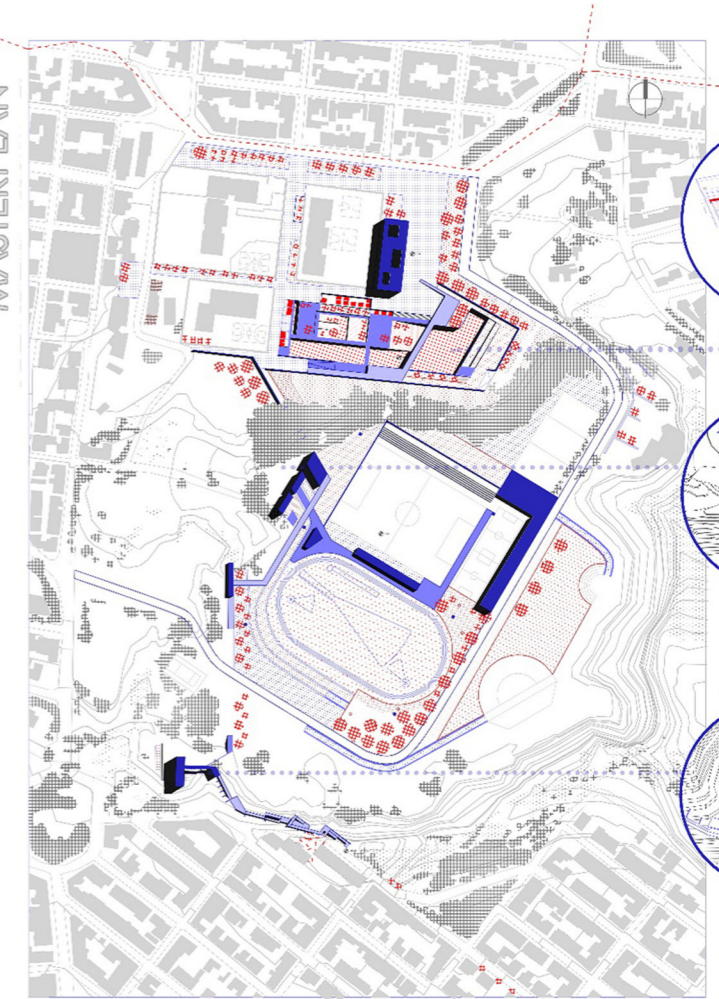
data:

- residential area
- quarry area
- river as drainage
- Big altitude difference
- large urban void

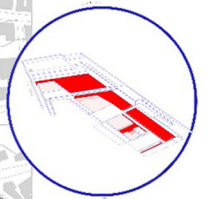
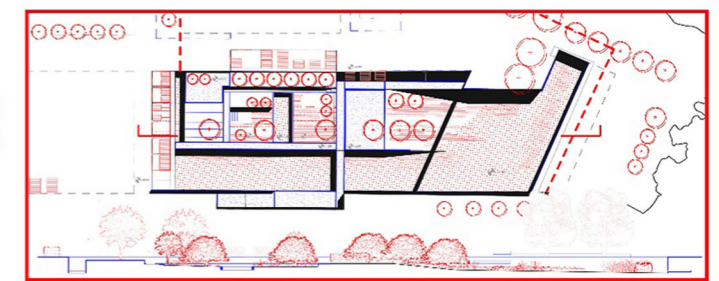
strategy:

- connection with public space / recreation area
- wetland formation - artificial lake, gardens
- topiary path connecting the lower and upper terrain

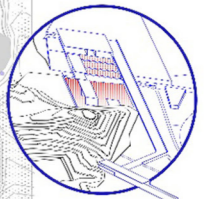
MASTERPLAN



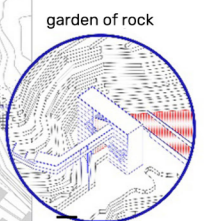
proposal



garden of water

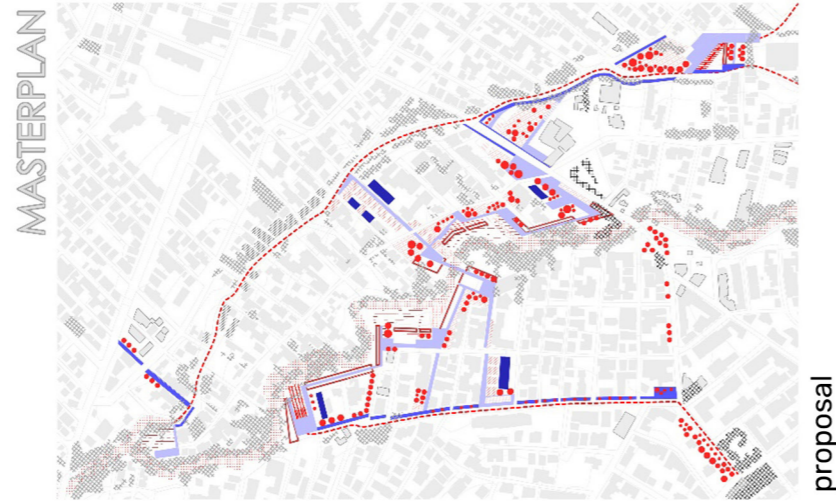
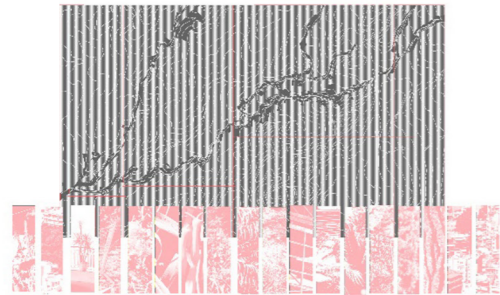


garden of sun

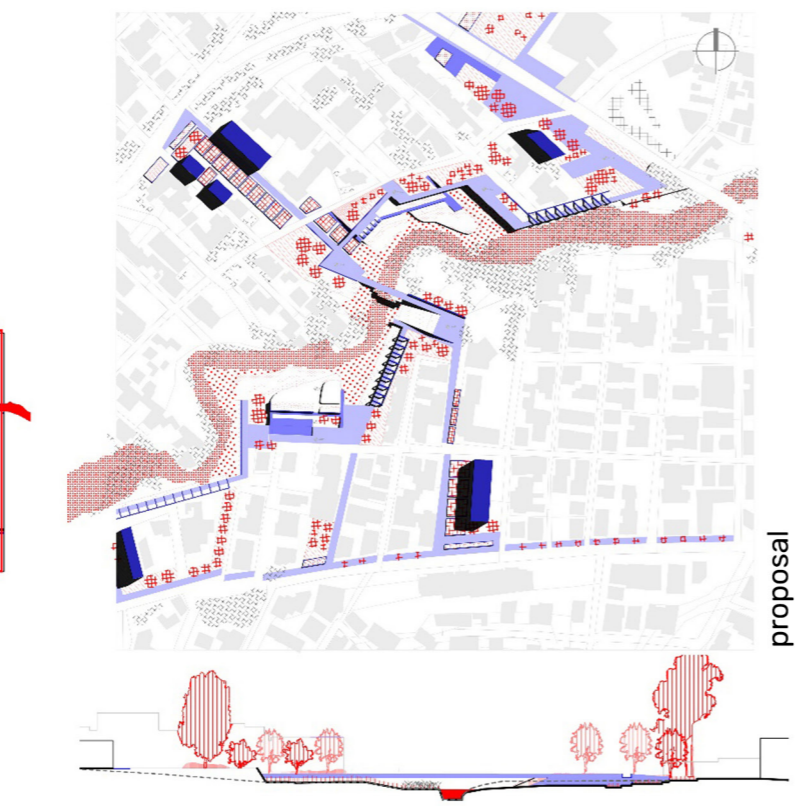


garden of rock

Area 3: Aghios Dimitrios

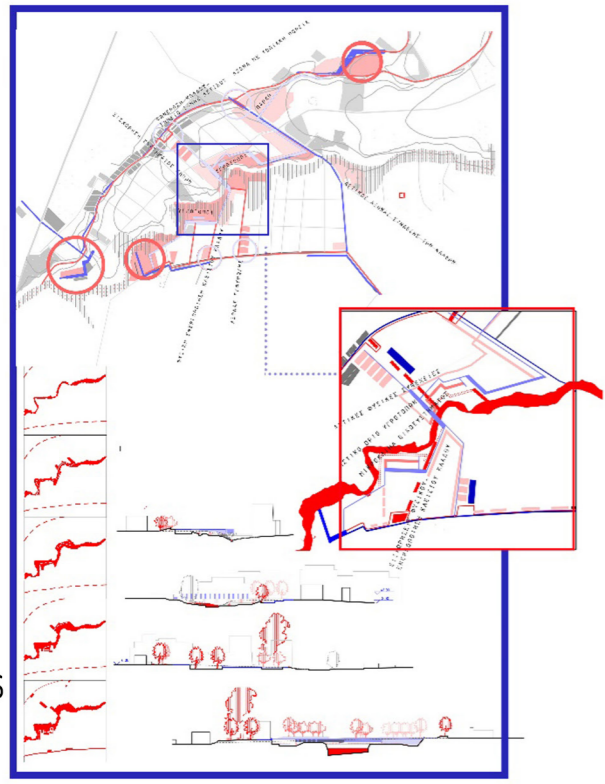


proposal



proposal

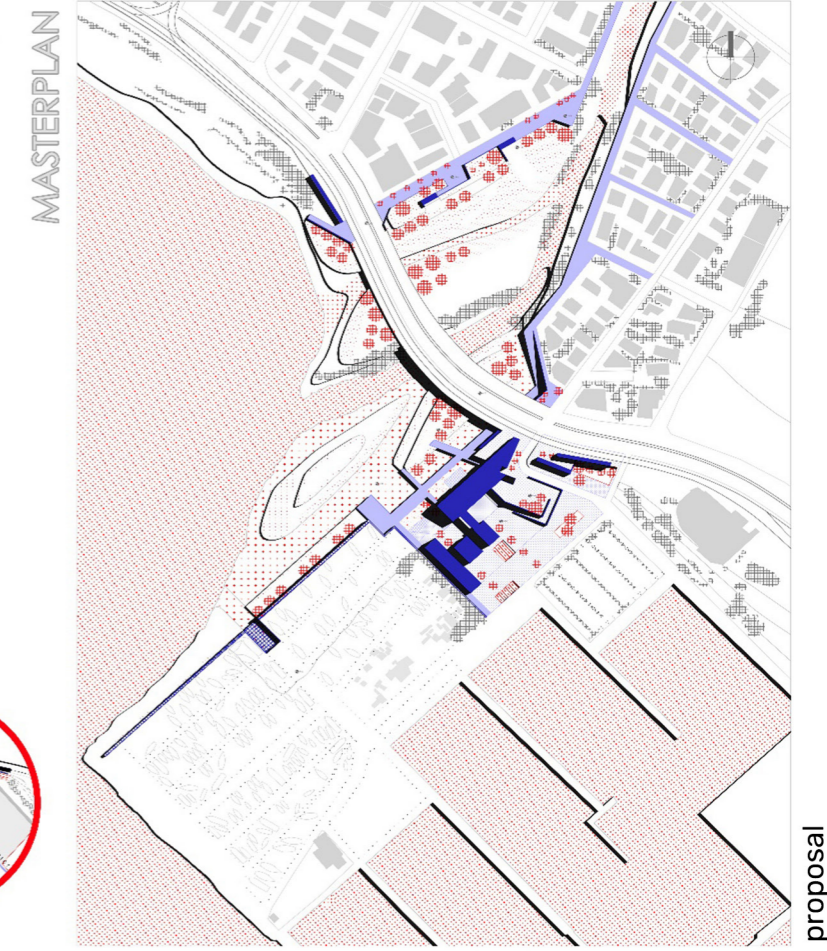
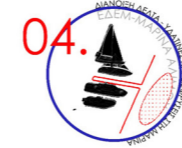
strategy



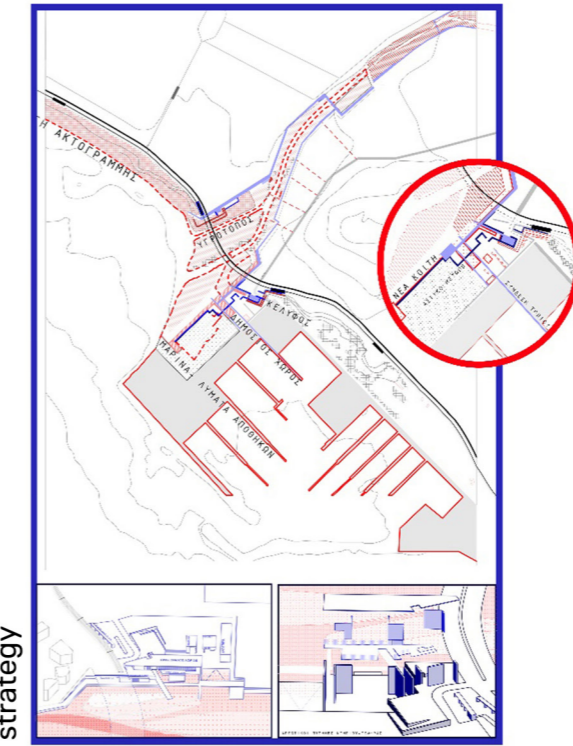
- data:
- Suburban area with industrial remains structures
 - intense stream meanders / visible stream branches
 - lack of perpendicular to the stream course in the urban terrains

- strategy:
- wetland, park and topiary paths formation
 - Bridging of the banks at the urban level
 - system of topiary and urban spaces systems associated with all the branches

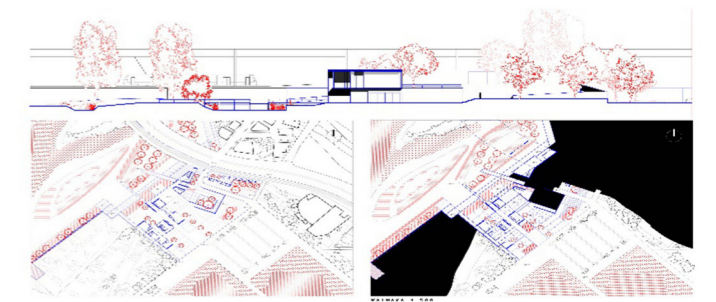
Area 4: Marina of Alimos



proposal



strategy



- data:
- River estuary between beach and marina
 - Polluted waters
 - Residential area / large scale building area and costal zone
 - Flood zone encroachment

- strategy:
- Wetland and habitat configuration
 - Topiary paths and public spaces in multiple grounds
 - Large scale public structure hosting cultural facilities in open and closed spaces areas
 - Wastewater filtration

TECHNICAL DOSSIER

Title of the project	Between Landscape Fragments and the Residential Footprint: a Narration of Symbiosis.
Authors	Konstantina Pagkalou
Title of the course	Diploma Thesis
Academic year	021-2022
Teaching Staff	Panagiota Karamanea
Department / Section / Program of belonging	Urban and Landscape Design
University / School	Technical University of Crete/ School of Architecture



Written statement, short description of the project in English, no more than 250 words

The project examines the area of Stavros Akrotiri, a coastal region in Crete, and its surroundings. It is a resort settlement that developed within a landscape with a unique geological context.

Initially, the uniqueness of the area is emphasized as a place of contrasts: on one hand, a settlement with limited public space, developed in a labyrinthine manner, and on the other hand, a fragmented and difficult-to-access natural landscape that is highly privatized. Seeking balance in the coexistence of these two aspects, the project attempts to redefine the boundaries of the settlement; providing space for the natural landscape and organically articulating the two worlds.

Subsequently, the study focuses on the archaeological settlement, the ancient Venetian quarry (located in the rockiest part of the coast, separating the two beaches) as a space between the natural and the human-made. Using its structure and form as a tool, it seeks to bridge the contradictions and create a new urban system: a system of connections, public spaces, paths, and public buildings with cultural uses.

Finally, a new character is sought for the settlement, one that is more compatible with the symbiotic relationship aspired to in this research. A scenario of uses is configured, aiming for a common presence of culture, local producers, and leisure in public space, with a focus on the two new squares of the settlement and the buildings that frame them.

For further information

Máster d'Arquitectura del Paisatge - UPC

Contact via email at:
master.paisatge.comunicacio@gmail.com

biennal.paisatge@upc.edu

Máster d'Arquitectura del Paisatge - UPC

Sede ETSAB - Universitat Politècnica de Catalunya

Calle Jordi Girona, 15. Edificio Omega 1-3
08034 Barcelona - Spain

COAC - Colegi oficial d'Arquitectes de Catalunya

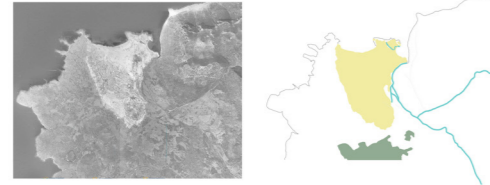
Carrer Arcs, 1-3
08002 Barcelona - Spain

12th International Biennial Landscape Barcelona

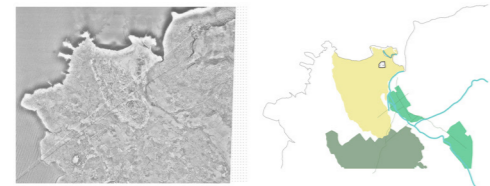
Barcelona October 2023

SCHOOL PRIZE

1940



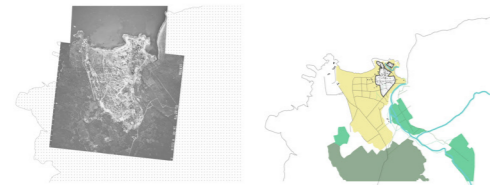
1960



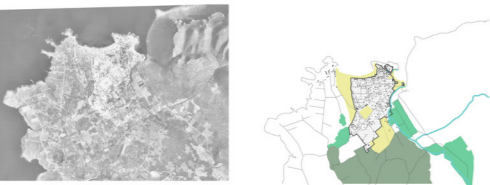
1969



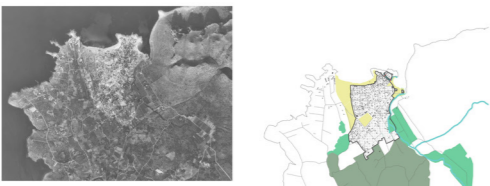
1979



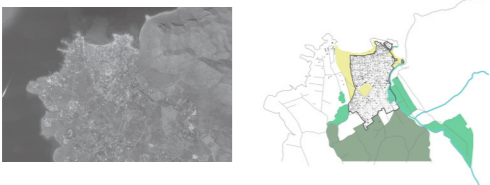
1989



1999



2011



?

2011

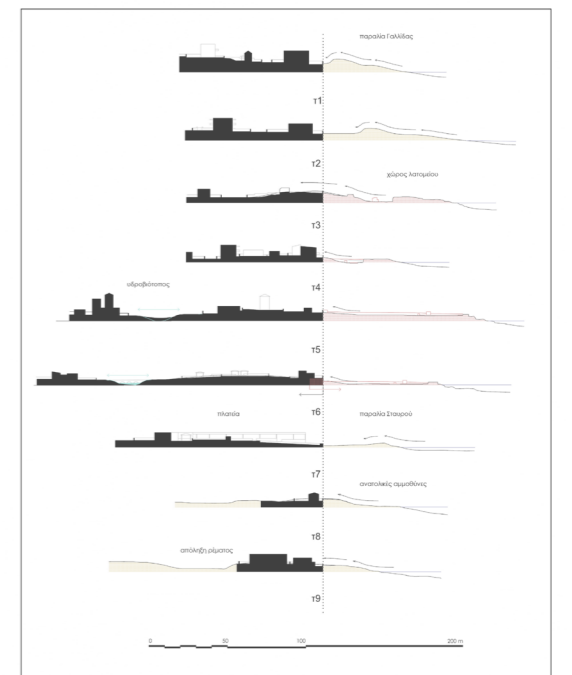
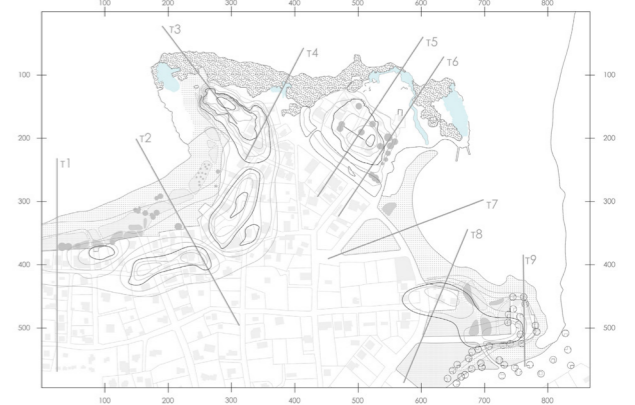
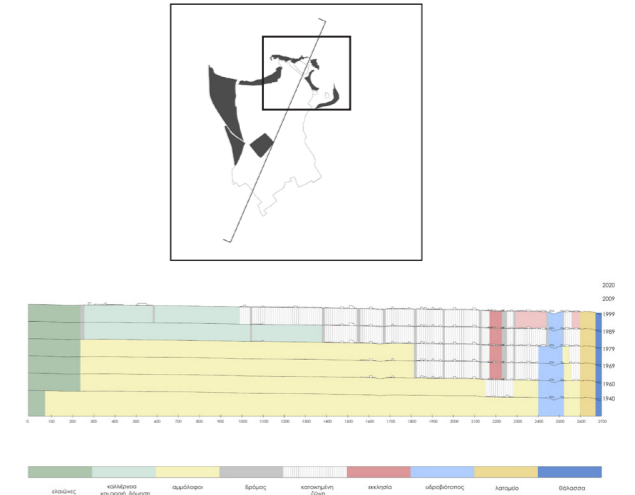
20

46

95

323

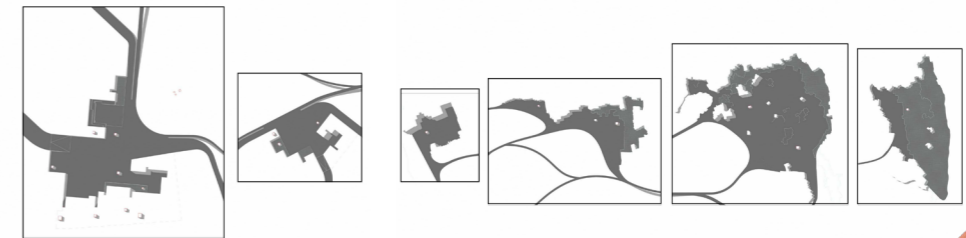
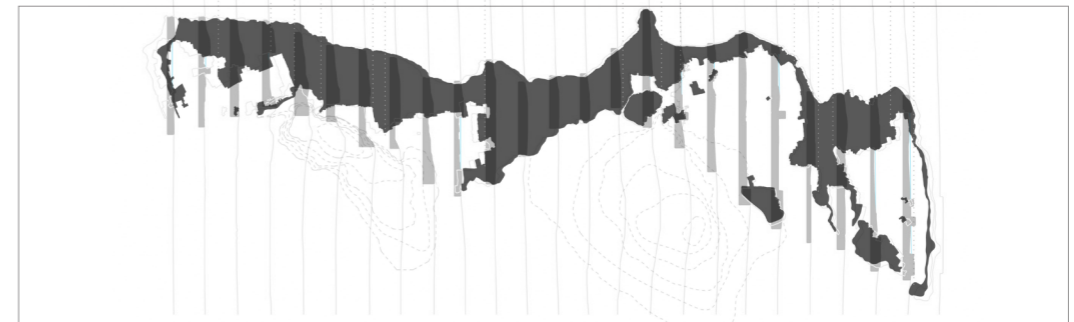
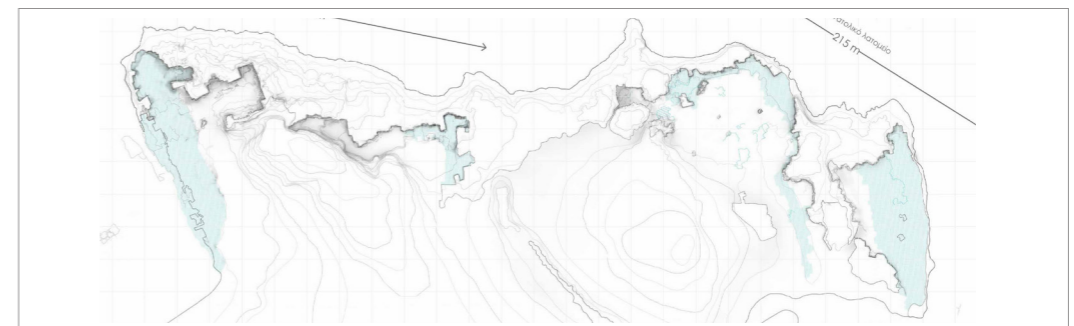
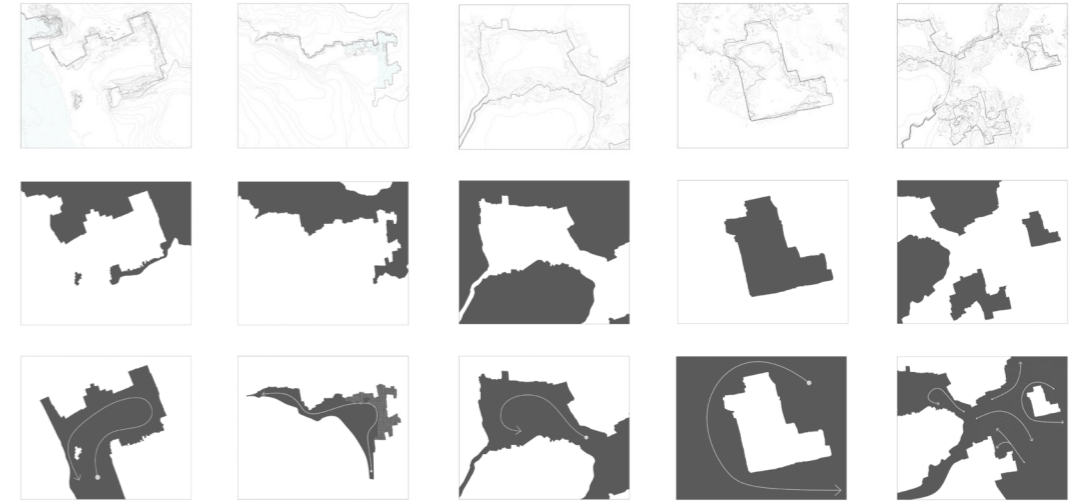
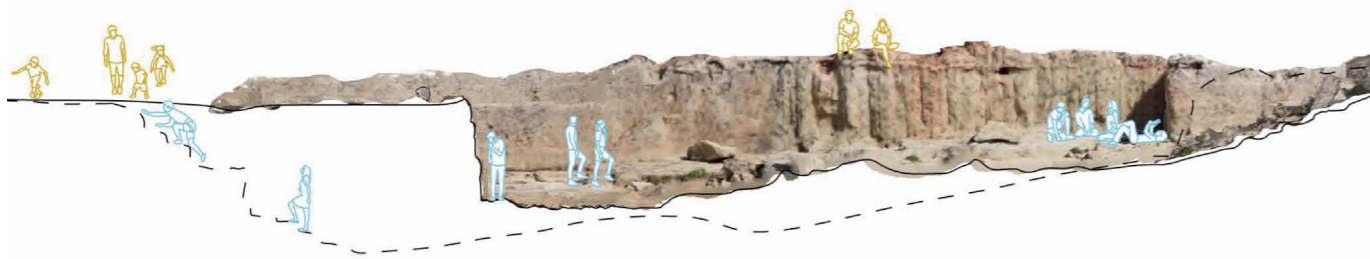
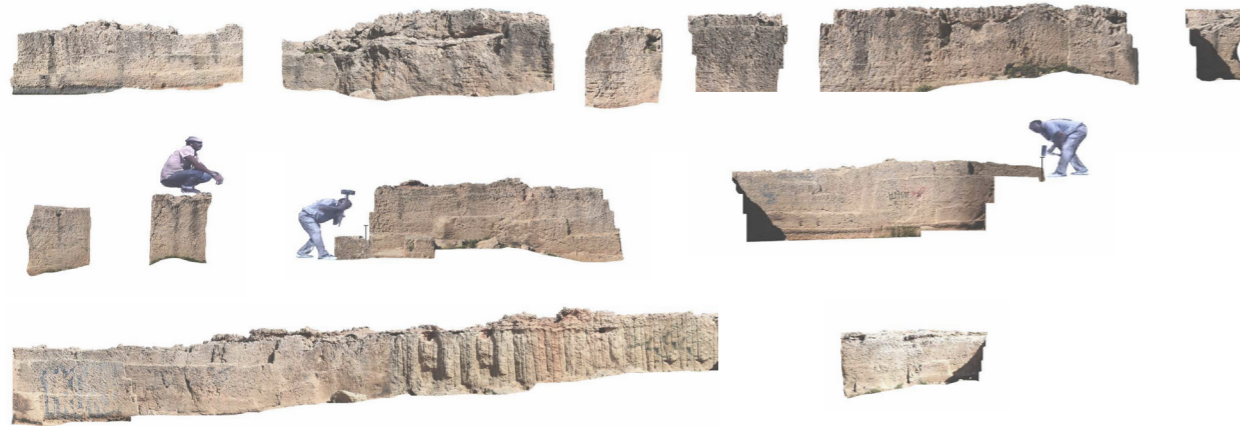
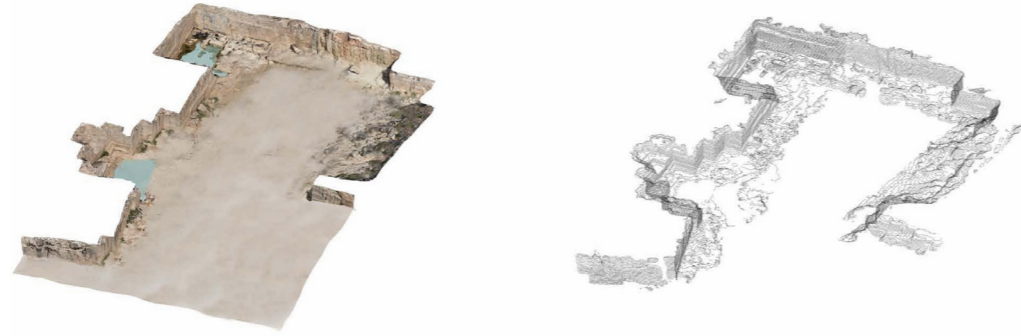
460



+ Seeking balance

a.

Outside the vague residential boundaries, the landscape continues in some places to retain its raw natural form, but in others it is under pressure from the continuous spread of housing. We find places of particular local value, disconnected from each other and difficult to access, due to the privatization of the areas by the settlers. These "fragments of landscape" understood as such after the encroachment of the settlement, are the beach of Gallida, the Venetian quarry on the northern coast, a small wetland south of the previous one, the beach of Stavros, the stream of Nerokampou, with the agricultural zone and the beach at the end of it and finally the Vardias mountain.

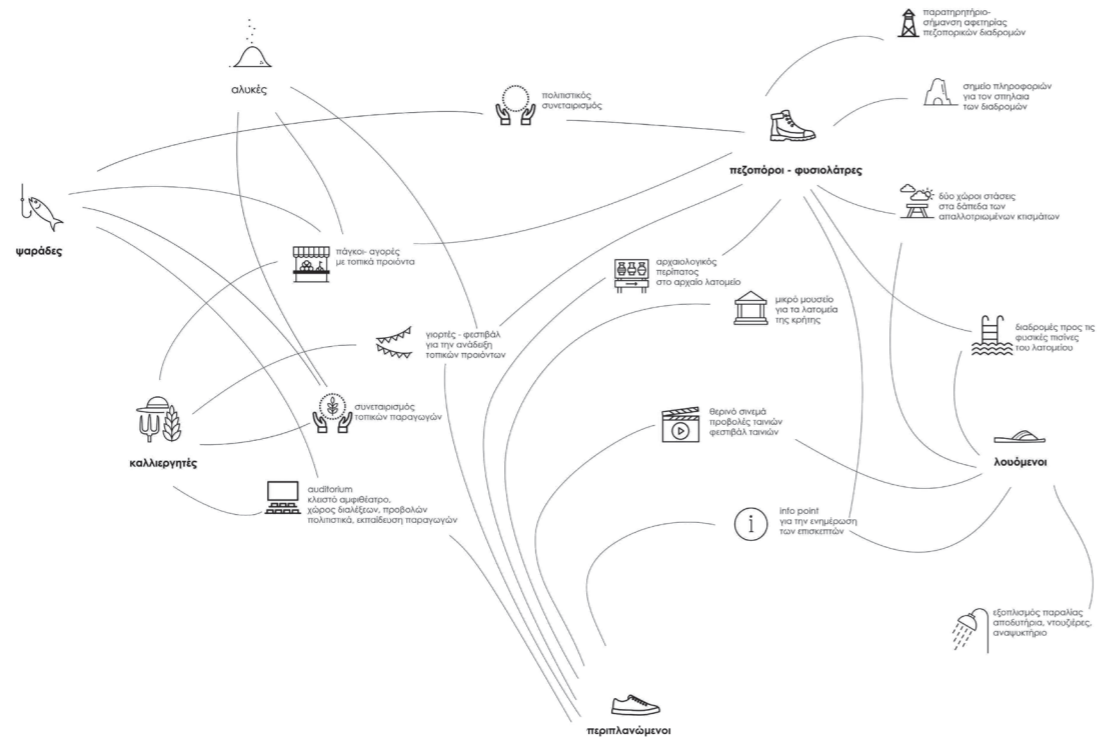


+ looking for connections

b.

The project focuses on the remains of the archaeological site to find its language. It is a special place where the excavated rock creates spaces that encourage the movement of the user: sitting under the shade, going up to the highest levels, immersing himself in the small lagoons. This is how some typologies of space are classified. We have the hugs, the stomachs, the islets, the branches, the nests. Using these qualities as a tool, the project tries to transfer the spatial experience of the quarry to the public space.

ΟΙ ΠΑΙΧΤΕΣ



+ in search of anew character

C.

Looking for the new identity of the town we find ourselves with the problem of the monofunctionality of this tourist area. At the same time, the wider area of the settlement can offer more opportunities for the local economy and identity: farmland, fishing, hiking, archaeological sites, but also the connection to the cinema that is produced in our collective memories, through the characteristic Scene of Zorba's movie. A new character for Stavros could be based on the common and simultaneous presence of all of the above in the public space, that is, culture, local producers and leisure.

TECHNICAL DOSSIER

Title of the project Touristic Connections and Reflections in Platanias, Crete: Re-weaving the Urban Fabric through Play.
Authors Thisvi Proimou
Title of the course Diploma Thesis
Academic year 2020-2021
Teaching Staff Alexios Tzompanakis
Department / Section / Program of belonging Urban and Landscape Design
University / School Technical University of Crete/ School of Architecture



Written statement, short description of the project in English, no more than 250 words

The project explores the emergence of an urban incubator by establishing unexpected connections between play and suburban fragments, altering the spatial character of mass tourism in Crete. Platanias, a coastal region in Crete, features a linear landscape dominated by hotels, shops, and restaurants. The investigation reveals two contrasting residential areas: an initial hilltop acropolis and a modern extension along the coastline. These areas are oriented towards the main arteries of the Road and the Beach. The dominance of mass tourism in Northern Crete relies on the region's diverse identities and options. Visitors can find familiar experiences at American diners, sushi places, or Scandinavian bars. However, they remain tourists seeking consumption and entertainment. To address this, the project introduces play and playfulness as tools to understand, analyze, and partially reconstruct the theme park-like environment. French sociologist Roger Caillois examines four types of play - competition, chance, simulation, and vertigo - showcasing how playfulness can bypass dominant narratives and redefine the relationship between possibility and limit. Just as behaviors and meanings in cities are in constant flux, design processes can embrace non-functional, fleeting, and uncertain elements. Through unexpected correlations between play and suburban fragments, a new intermittent spatial mechanism emerges, reinterpreting the existing site conditions. Critical points and paths are redefined, and structural elements and landscapes frame a playful design that organizes or dialectically reverses symptomatic aspects.

For further information

Máster d'Arquitectura del Paisatge - UPC

Contact via email at:
master.paisatge.comunicacio@gmail.com

biennal.paisatge@upc.edu

Máster d'Arquitectura del Paisatge - UPC

Sede ETSAB - Universitat Politècnica de Catalunya

Calle Jordi Girona, 15. Edificio Omega 1-3
08034 Barcelona - Spain

COAC - Colegi oficial d'Arquitectes de Catalunya

Carrer Arcs, 1-3
08002 Barcelona - Spain

12th International Biennial Landscape Barcelona

Barcelona October 2023

SCHOOL PRIZE

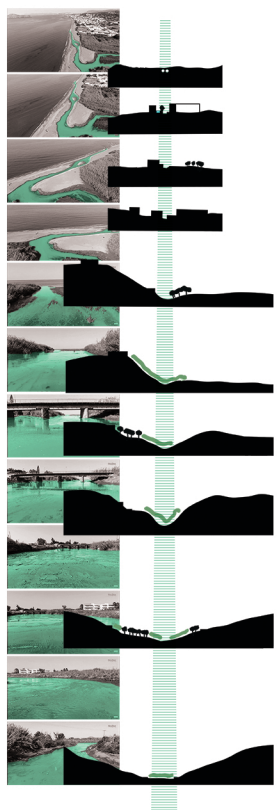
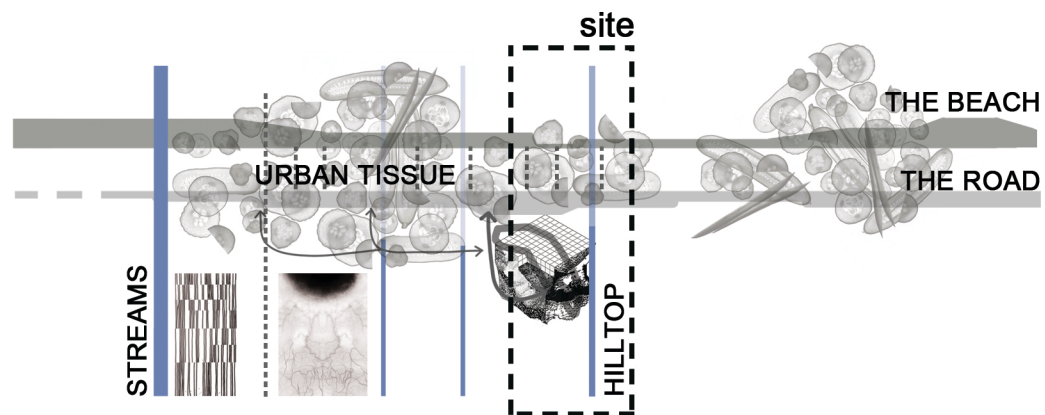
a. database

Introducing the "ark of tourism".

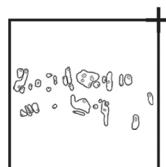
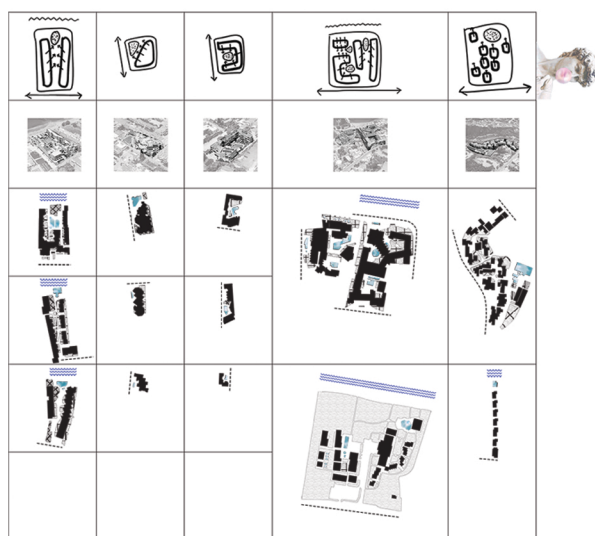
The small coastal town of Platanias, situated in the popular tourist region of Crete, features a consistent linear arrangement of hotels, shops, and restaurants, creating a homogeneous landscape. When examining the factors contributing to the development of this hybrid location, two contrasting residential areas emerge:

- an original spatial core situated atop a hill,
- complemented by a contemporary extension that stretches along the coastline.

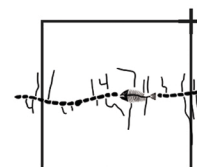
Both of these areas are oriented towards the main "backbones" of the urban ensemble: the Road and the Beach.



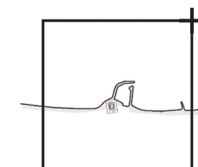
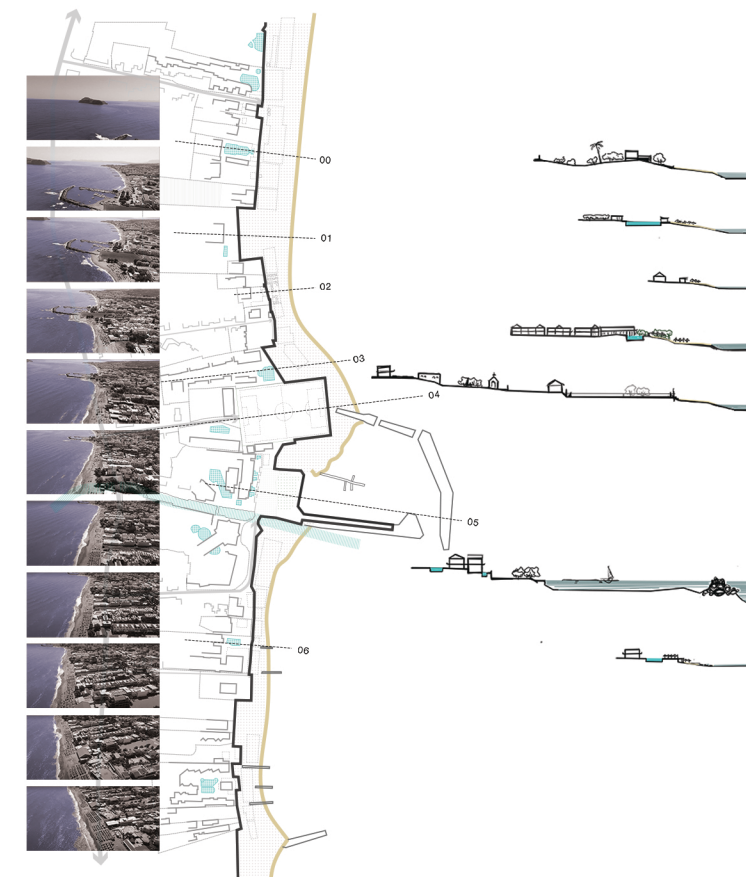
STREAMS
The inactive flows of water.



URBAN TISSUE
The hotel plankton.



THE ROAD
The "backbone" of informal public space.



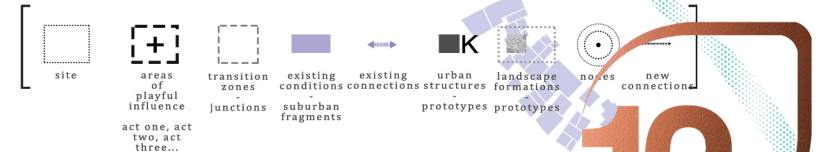
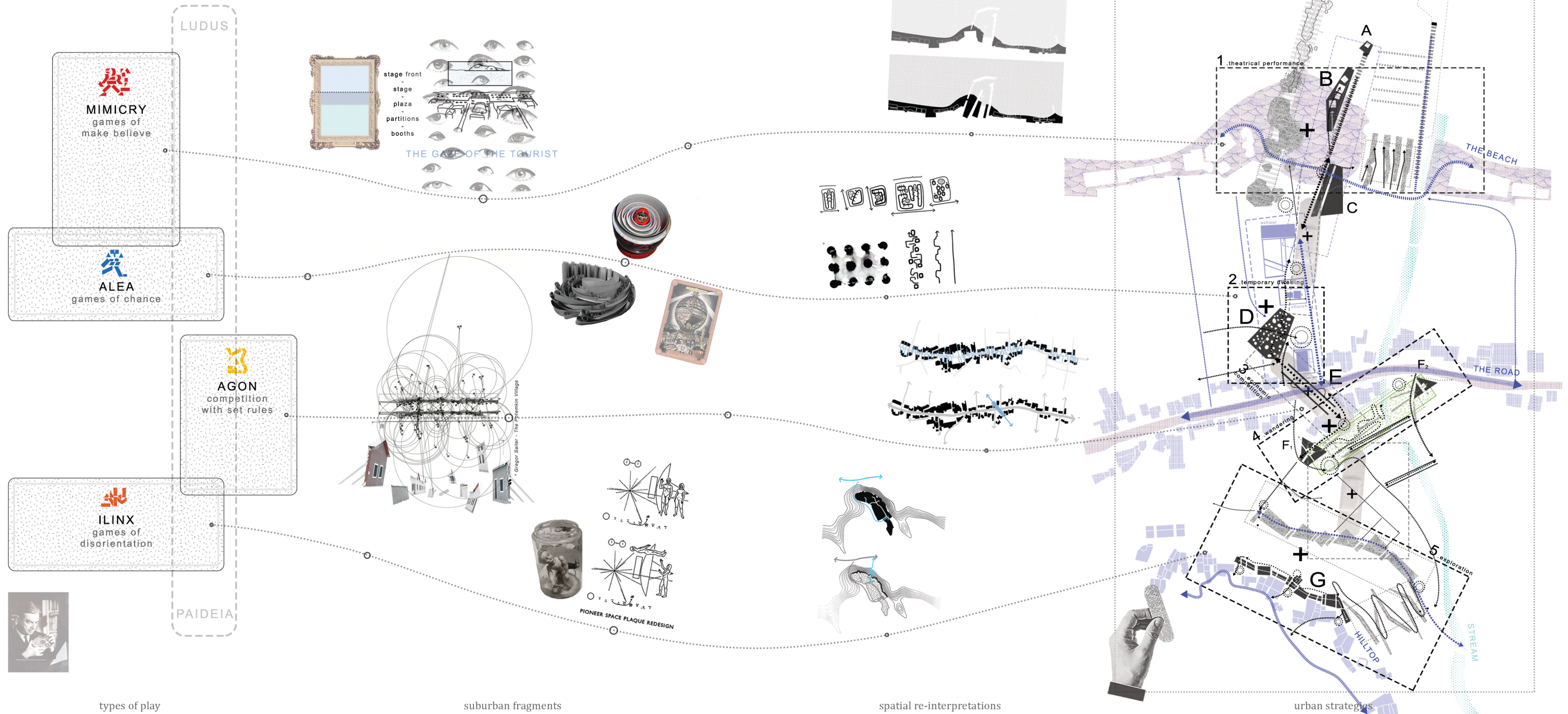
THE BEACH
The theatrical curtain of summer vacations.

b. scenarios

Interpreting "play" as rhythm and arrhythmia.

The concepts of play and playfulness as valuable tools for comprehending, examining, and partially reconstructing the aforementioned Disney theme park. French sociologist Roger Caillois explores four categories of play: competition, chance, simulation, and vertigo. He demonstrates how playfulness enables us to circumvent the dominant narratives of a place and redefine the relationships between possibility and limitation.

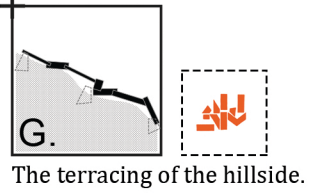
Consequently, by establishing unforeseen connections between different types of play and suburban fragments, a novel transverse, zig-zag, intermittent spatial mechanism emerges. This mechanism reinterprets and recontextualizes the existing conditions of the site.



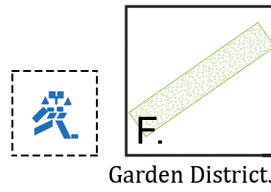
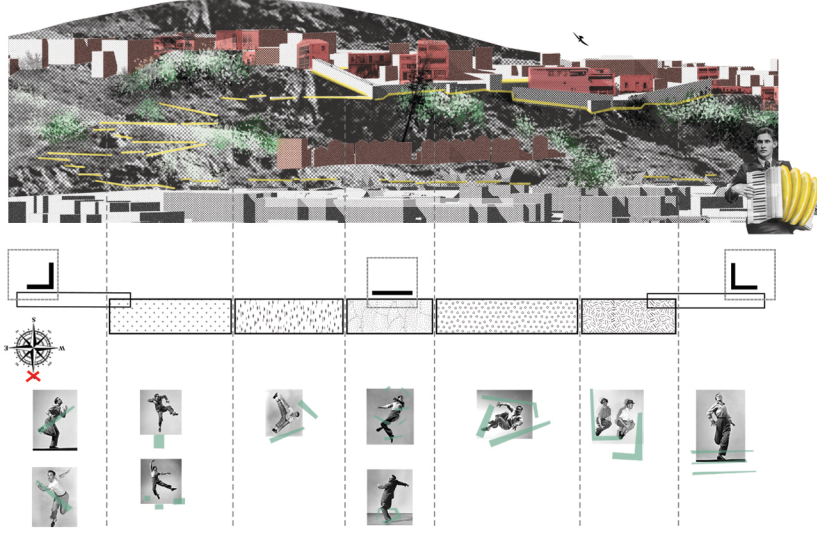
c. a new urban incubator

Establishing a new coherent fragmentation.

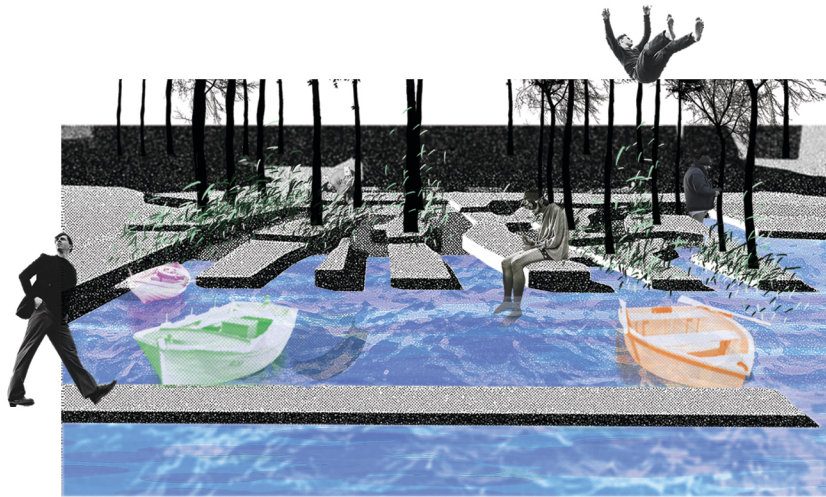
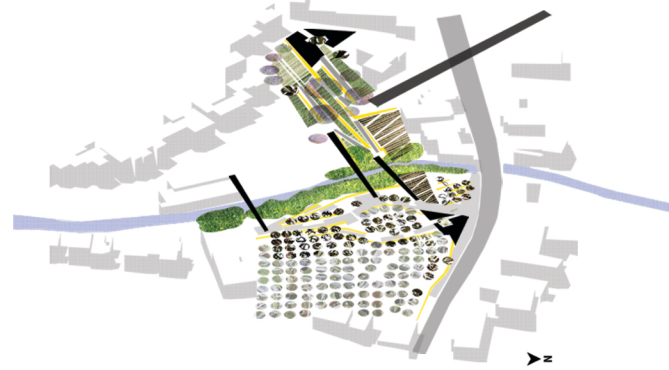
Within the intermediate spaces, which currently exist in a dormant state in terms of their functions, forms, topographies, and temporal aspects, critical points and pathways are redefined and enclosed by urban structures and landscape formations. This results in the creation of a dynamic and playful design that either organizes the existing symptomatic elements or dialectically reverses them.



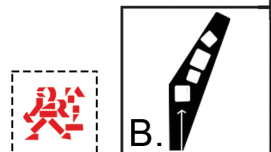
The terracing of the hillside.



Garden District.



The seaside puppet theater.



B.

