

Please provide a 250-word text explaining the selection criteria used to choose the five projects representing the school in the Ribas Piera Award. Detail the aspects evaluated, such as conceptual quality, innovation, thematic relevance, technical resolution, or any other criteria considered in the selection process with a single image, characteristic of the academic process, to accompany the text

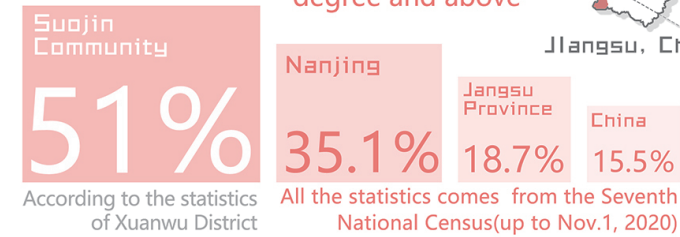
Course Title: This module comprises a series of courses culminating in the first semester of the senior year. It serves students from two undergraduate programs: Horticulture and Landscape Architecture.

Course Description: The syllabus for this comprehensive design module focuses on current urban topics, including the regeneration of public spaces within high-density urban communities and the redesign of K-12 school campuses embedded in these neighborhoods. Through theoretical instruction, on-site investigations, interviews, and multi-scenario approaches, the module aims to develop students' ability to understand and integrate the relationships between spatial form, socio-cultural environments, and ecosystems within real-world contexts. The module emphasizes the pivotal role of landscape architecture in driving socio-spatial transformation, revitalizing public life, and constructing ecological infrastructure. Specifically, in the renewal of aging communities, landscape serves not only as a tool for reshaping physical space but also as a vital carrier of collective memory and cultural identity. In the context of K-12 campus redesign, landscape acts as an extension of community educational space, fostering environmental education, healthy development, and community interaction. This course guides students to adopt interdisciplinary and holistic perspectives, integrating landscape architectural design into complex urban systems through localized practice, thereby formulating sustainable spatial strategies for the future.

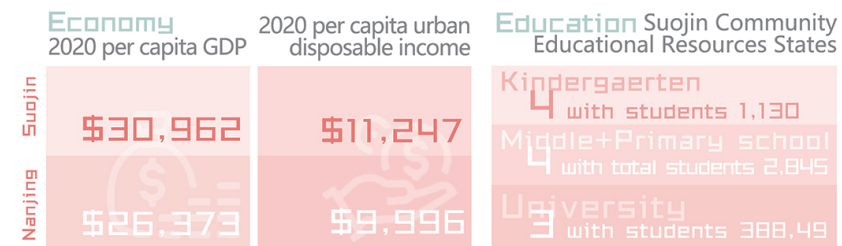
24/7 Nonstop Community Locational Dynamics

1.Highly educated Community

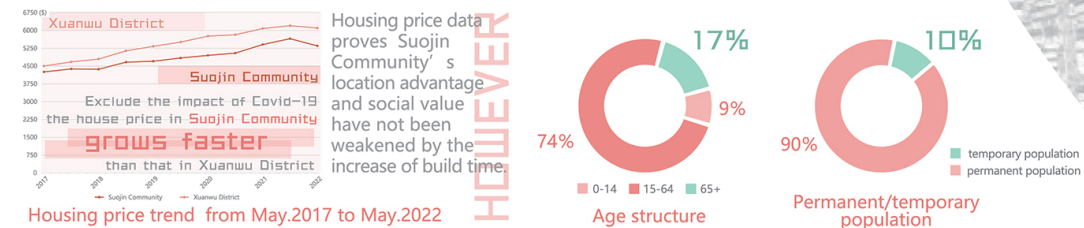
2022 proportion of people with college degree and above



2.High Prosperity Community



3.Highly Inclusive Community



Country/City

University / School

Academic year

Title of the project

Authors

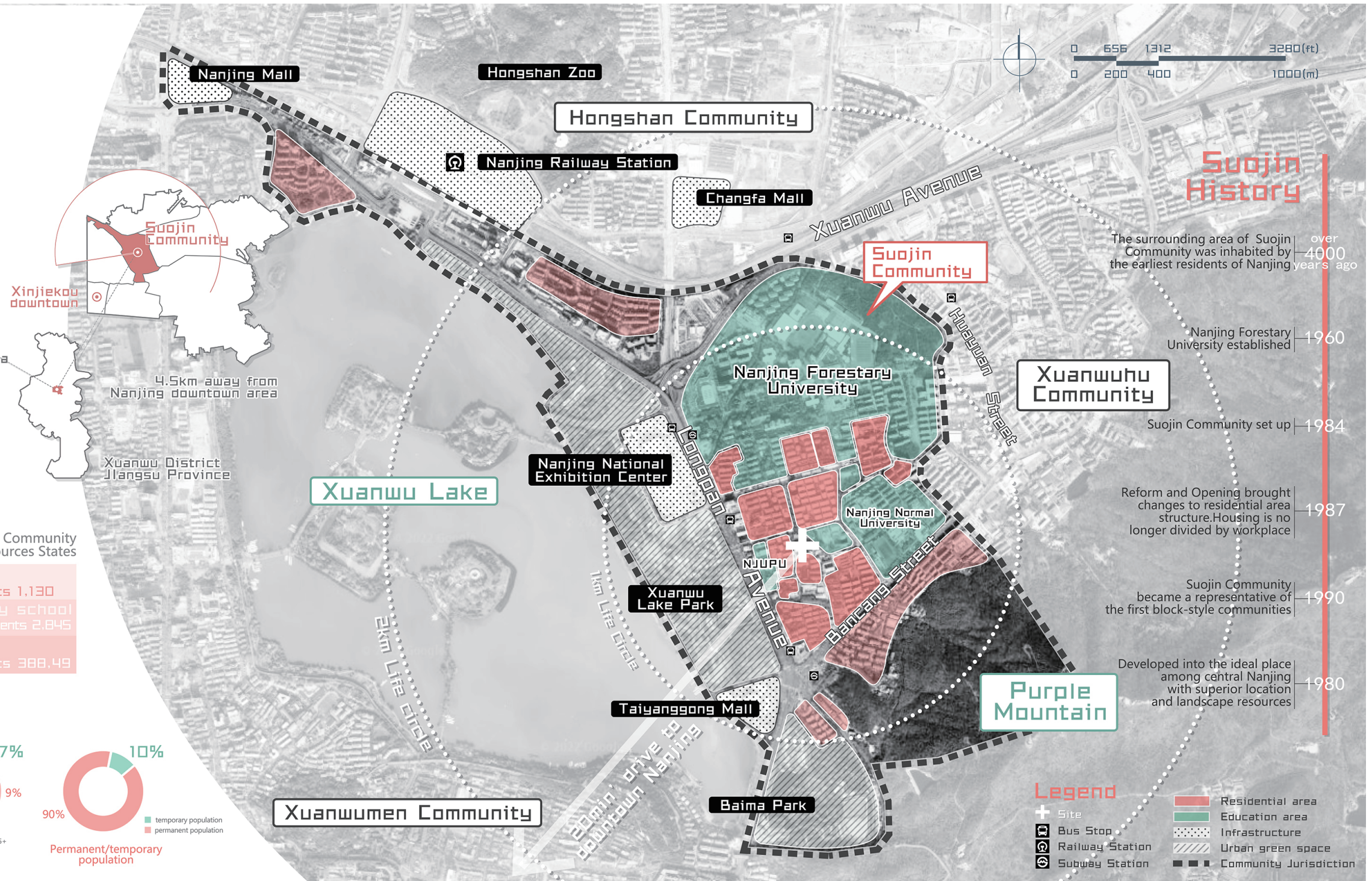
China/Nanjing

Nanjing Forestry University

2022/2023

24/7 NON-STOP COMMUNITY A PUBLIC SPACE UPDATE STRATEGY FOR RESIDENTS

Hongfei Lu,Mingxing Zhang,Ke Xiang,Ke Zhang,Jinghan Peng,Yuhang Zheng,Binsheng Li,Siyuan Li,Lingnan Cui,etc.



| | |
|----------------------------------------------------|--------------------------------------------------------------------------------------------------------------|
| Title of the project | 24/7 NON-STOP COMMUNITY A PUBLIC SPACE UPDATE STRATEGY FOR RESIDENTS |
| Authors | Hongfei Lu,Mingxing Zhang,Ke Xiang,Ke Zhang,Jinghan Peng,Yuhang Zheng,Binsheng Li,Siyuan Li,Lingnan Cui,etc. |
| Title of the course | Landscape Architecture Planning & Design III |
| Academic year | 2022/2023 |
| Teaching Staff | Suyue He, Yimeng Peng |
| Department / Section / Program of belonging | College of Landscape Architecture |
| University / School | Nanjing Forestry University |



Written statement, short description of the project in English, no more than 250 words

Suojin Community, adjacent to the Nanjing Forestry University campus, is a high-density, aging community established over 40 years ago. The community environment significantly overlaps with the daily routines of the student population. The project site is the community's central square. The design objective is to create the first dedicated public activity space within a 0.5km² radius specifically for children, while simultaneously accommodating the daily outdoor activity needs of the community's aging population, which constitutes over 40% of its residents. Following on-site investigations, questionnaire surveys, interviews, and a review of historical records, the analysis of the research findings led to the following design strategy: 1、 Fulfilling the fundamental functional requirements of a children's play space.2、 Accommodating outdoor social interaction needs for different resident groups across various time periods.3、 Enhancing the ecological resilience of the site and its immediate surroundings.4、 Improving shared site experiences for both children and their caregivers, alongside ensuring low-cost maintenance and management. Throughout the course of the project, the design proposals underwent multiple rounds of communication and discussion with the Suojin Village Community Management Office. Furthermore, collaborative discussions were held with children from two kindergartens and one primary school within the community, ensuring the thorough solicitation of input from diverse stakeholder groups.

Barcelona International Landscape Biennial

Contact via email:
biennialadm@coac.net

Venue:
COAC - Col·legi Oficial d'Arquitectes de Catalunya
Carrer Arcs 1-3, 08002 Barcelona - Spain

Corresponding Voices

Problem Solving

Questionnaires and interviews were collected in Jan.-Mar. 2022, while the design work started in Feb.-Mar.. The project has been approved. Due to COVID-19, the construction will be postponed to Sep.

Specific

1 Short stay (Children)
Space for children's play

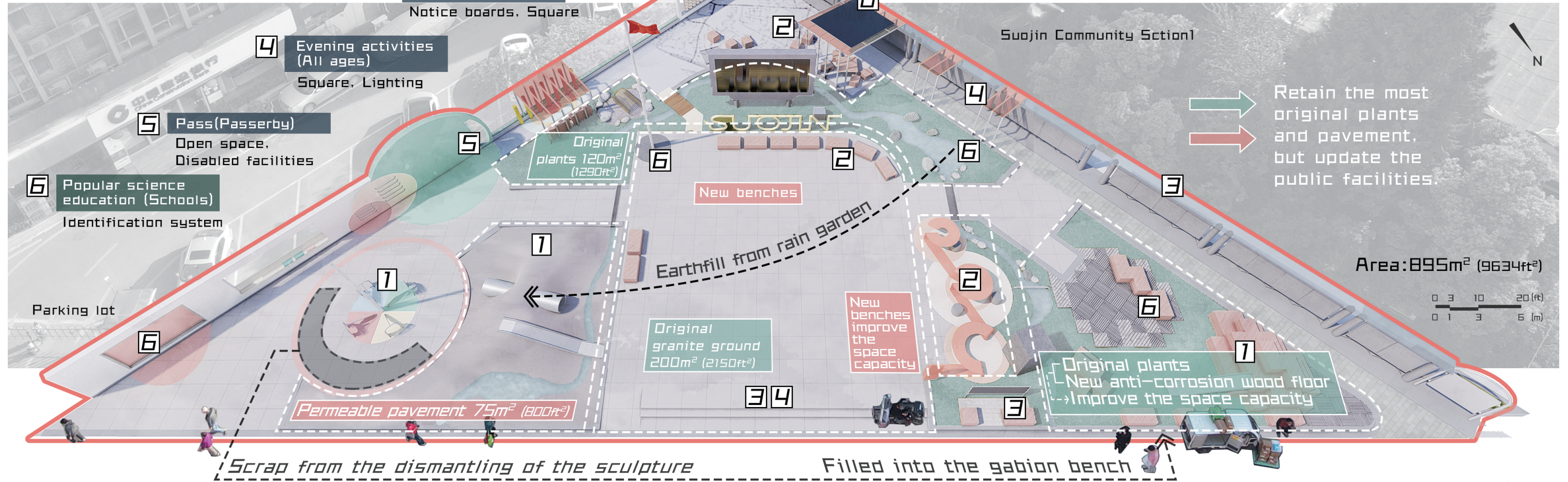
2 Contact and socialize (Senior)
Ample rest seats

3 Collective activities (Community)
Notice boards, Square

4 Evening activities (All ages)
Square, Lighting

5 Pass(Passerby)
Open space, Disabled facilities

6 Popular science education (Schools)
Identification system



WHAT ASPECTS WILL BE 'NON-STOP' ?

1 24/7 DAILY ACTIVITIES
Round the clock
All Ages are Welcomed

2 ENERGY
Light
Water
Biomass
Electricity

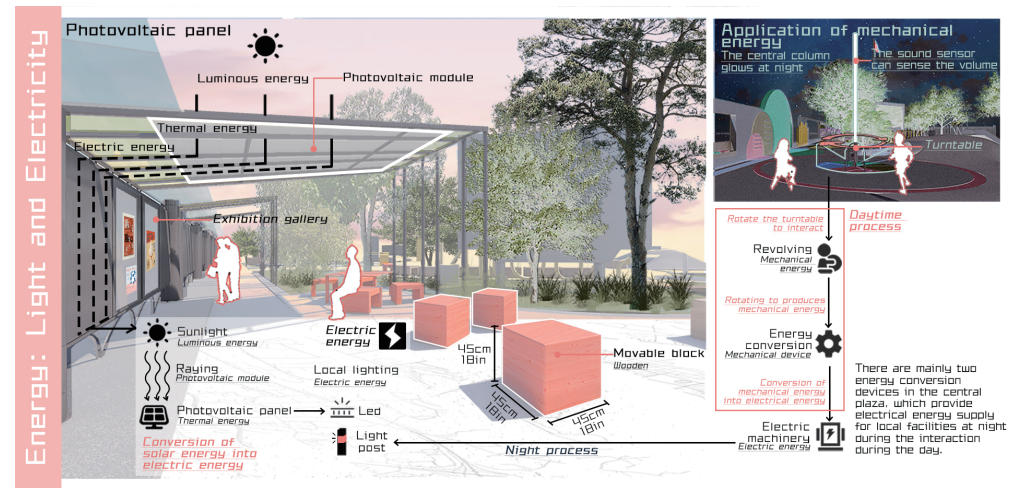
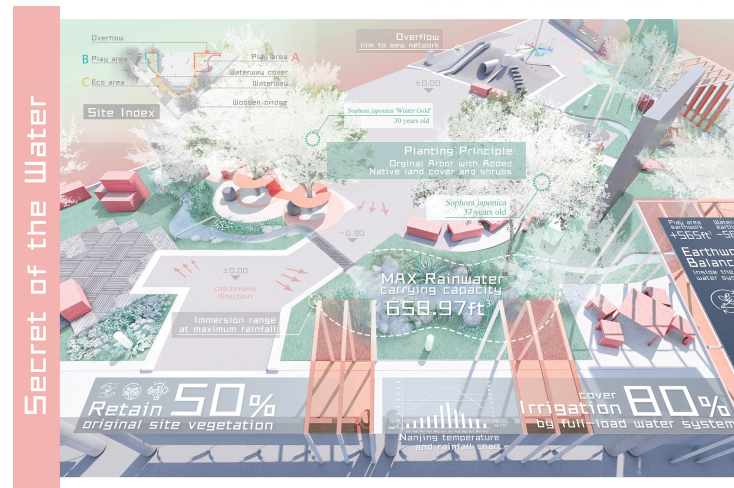
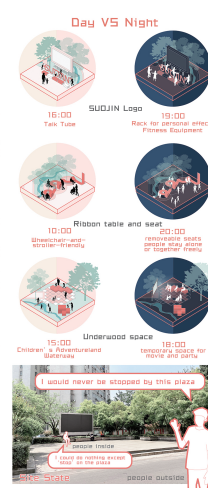
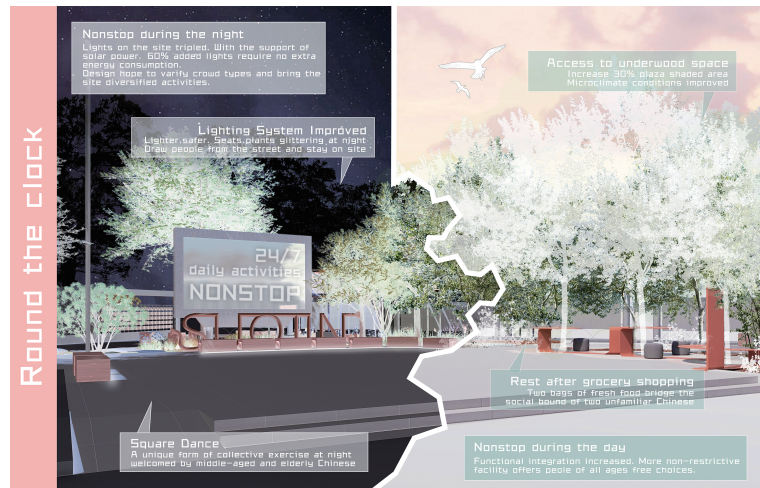
3 LOCALITY
Local Resources
Residents' Memory

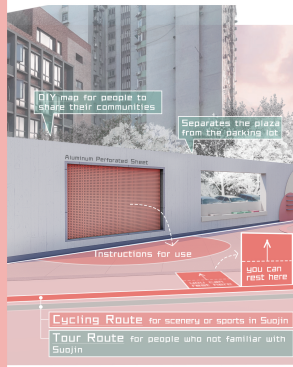
Retain the most original plants and pavement, but update the public facilities.

Area: 895m² (9634ft²)

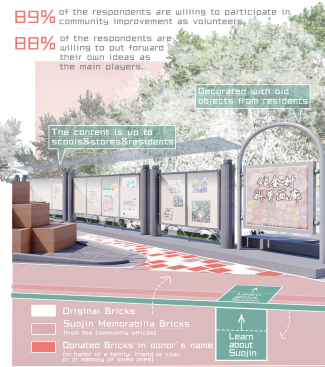
0 3 10 20 (ft)
0 1 3 6 (m)

Suojin South Road <-----

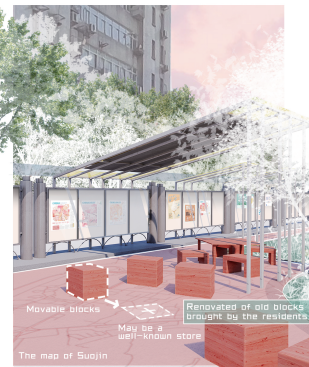




56% of the residents have lived here for more than 5 years.
86% of respondents are willing to share with us their favorite stores and public places.
26% of respondents want to prioritize the improvement of the community's distinctive signage system.

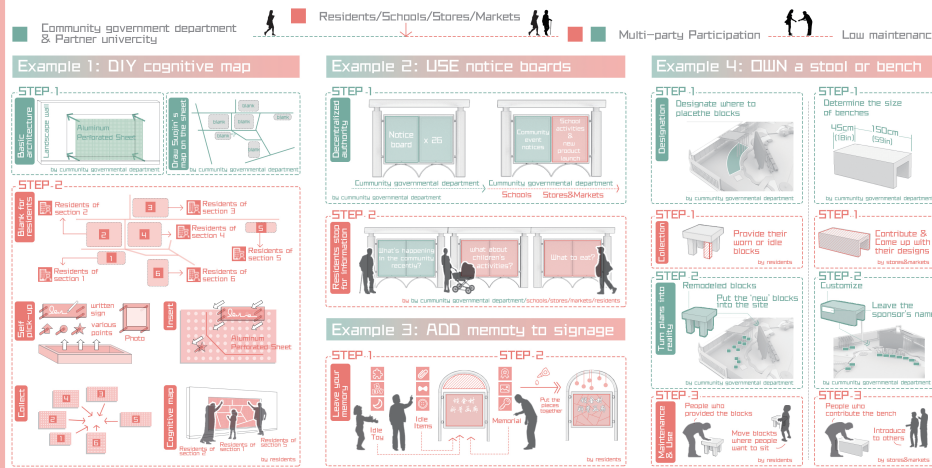


89% of the respondents are willing to participate in community improvement as volunteers.
88% of the respondents are willing to put forward their own ideas as the main players.
71% of respondents rarely look at the notice boards. Reasons: Updated slowly. Useless information. Damaged facilities, etc.
85% of the schools and stores are willing to share a piece for publicity and decoration.
78% of respondents are willing to bring old things from home to decorate the plaza.

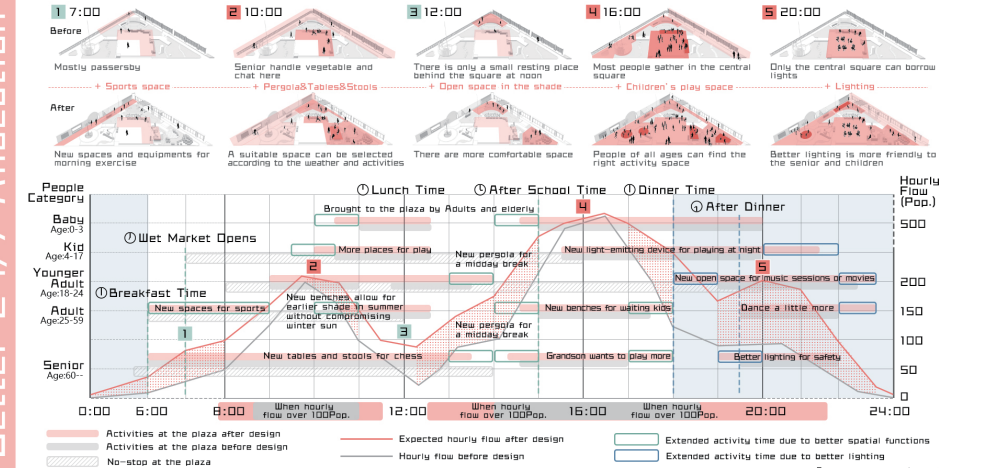


24% of the items brought to the plaza were shade tools.
20% were portable benches.
The two most common things residents brought to the plaza.
85% felt the community lacked places to sit and rest.
*Data comes from questionnaires

Merged Forces: Low Maintenance Guide



Better 24/7 Allocation



Phased Planning

*All data sources are detailed in reference

