

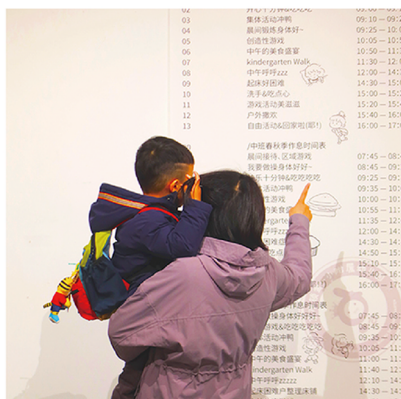
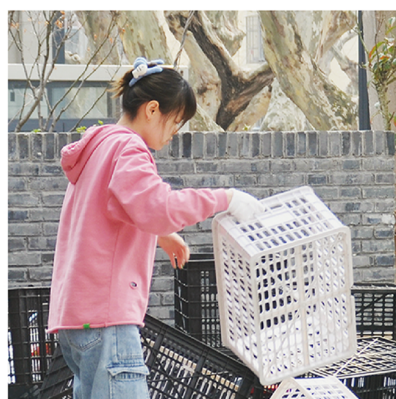
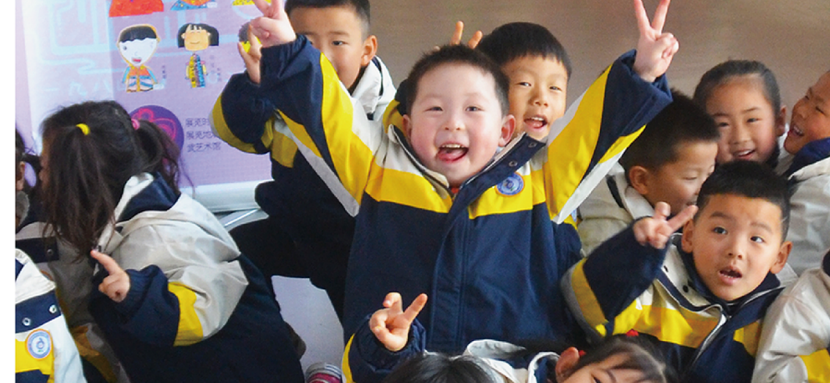
Please provide a 250-word text explaining the selection criteria used to choose the five projects representing the school in the Ribas Piera Award. Detail the aspects evaluated, such as conceptual quality, innovation, thematic relevance, technical resolution, or any other criteria considered in the selection process with a single image, characteristic of the academic process, to accompany the text

Course Title: This module comprises a series of courses culminating in the first semester of the senior year. It serves students from two undergraduate programs: Horticulture and Landscape Architecture.

Course Description: The syllabus for this comprehensive design module focuses on current urban topics, including the regeneration of public spaces within high-density urban communities and the redesign of K-12 school campuses embedded in these neighborhoods. Through theoretical instruction, on-site investigations, interviews, and multi-scenario approaches, the module aims to develop students' ability to understand and integrate the relationships between spatial form, socio-cultural environments, and ecosystems within real-world contexts. The module emphasizes the pivotal role of landscape architecture in driving socio-spatial transformation, revitalizing public life, and constructing ecological infrastructure. Specifically, in the renewal of aging communities, landscape serves not only as a tool for reshaping physical space but also as a vital carrier of collective memory and cultural identity. In the context of K-12 campus redesign, landscape acts as an extension of community educational space, fostering environmental education, healthy development, and community interaction. This course guides students to adopt interdisciplinary and holistic perspectives, integrating landscape architectural design into complex urban systems through localized practice, thereby formulating sustainable spatial strategies for the future.



Each co-creator was encouraged to leave some of their own story in the exhibition, including the students.



Some small cartoon doodles, old photos, small toys and hand-crafts became the most impressive Easter eggs during the exhibition.



Country/City

China/Nanjing

University / School

Nanjing Forestry University

Academic year

2022/2023

Title of the project

Echobuild: Youth Architects of Belonging

Authors

Binsheng Li, Linzhe Liu, Xinqi Zhang, Yixue Wang, Haichen Wang, Suoqi Wu, Mingxing Zhang, Jinghan Peng, Ke Xiang, Ke Zhang, ect.

Title of the project	Echobuild: Youth Architects of Belonging
Authors	Binsheng Li, Linzhe Liu, Xinqi Zhang, Yixue Wang, Haichen Wang, Suoqi Wu, Mingxing Zhang, Jinghan Peng, Ke Xiang, Ke Zhang, ect.
Title of the course	Major Studio Practice
Academic year	2022/2023
Teaching Staff	Shuyue He,Yimeng Peng
Department / Section / Program of belonging	College of Landscape Architecture
University / School	Nanjing Forestry University



Written statement, short description of the project in English, no more than 250 words

“EchoBuild” is a community-based interactive exhibition centered on the theme of everyday life. As a key component of the senior-year design studio curriculum at NJFU, the project represents a phased outcome of landscape architecture’s intervention in alleviating community tensions. The exhibition was initiated as part of the 40th anniversary celebration of Suojin community which with long-standing ties to NJFU. Jointly curated by the university’s design teaching team and the local kindergarten, the project mobilized 36 students and engaged 30 families as co-creators throughout the entire design and exhibition process. During the two-month preparation period, over 400 children and their families participated in portrait drawing activities, and 37 families donated used suitcases for creative reuse. Local participation extended to over 50 shop owners who lent chests, and a community supermarket contributed 3 trolleys and 4 chairs. Twenty-one eateries shared regionally distinctive food stories and spatial memories. The project transformed both indoor and outdoor spaces, incorporating personal items to reveal overlooked aspects of daily community life and highlight individual perspectives on communal values. The exhibition remained open for 21 days, featured four themed events, attracted coverage from 8 official media outlets and over 20 institutional/social media platforms, and welcomed more than 3,500 visitors. “EchoBuild” demonstrated the potential of landscape architecture as a process-oriented actor, activating endogenous community dynamics and fostering inclusive public spaces through collaborative thinking. As an educational endeavor, it also provided a real-world model of socially engaged design pedagogy, underscoring the multifaceted value of academic involvement in community-making.

Barcelona International Landscape Biennial

Contact via email:
biennialadm@coac.net

Venue:
COAC - Col·legi Oficial d’Arquitectes de Catalunya
Carrer Arcs 1-3, 08002 Barcelona - Spain

With The Manager Group Of SJYY

2023 Chinese New Year, first consultation with the SJYY(Preschool and kindergarten center of SuoJin community).



Discussing the preparation plan for the exhibition with teachers and parent representatives of the SJYY.



Thr SJYY was co-founded with the Suojin community in 1984. This was the inaugural team of teachers.

With Teachers

Nov.2023 Consultation with teacher representatives from schools in the community in preparation for the exhibition.

Mobilization Of Community Residents For The Exhibition

Conference with resident representatives and volunteers meant to invite more stakeholders to participate in the preparation of the exhibition.



With Residents

We organized an art makeover event at the community central plaza. We have invited residents to participate in both current and upcoming events, we are also maintaining close contact with active participants.

With Activities

We have organized a "Paint the Community Vision" art event. We invited residents to participate in our events, and asked for their help with distributing pamphlets for future events. We have conducted on-site collection of residents' opinions and expectations of the community.



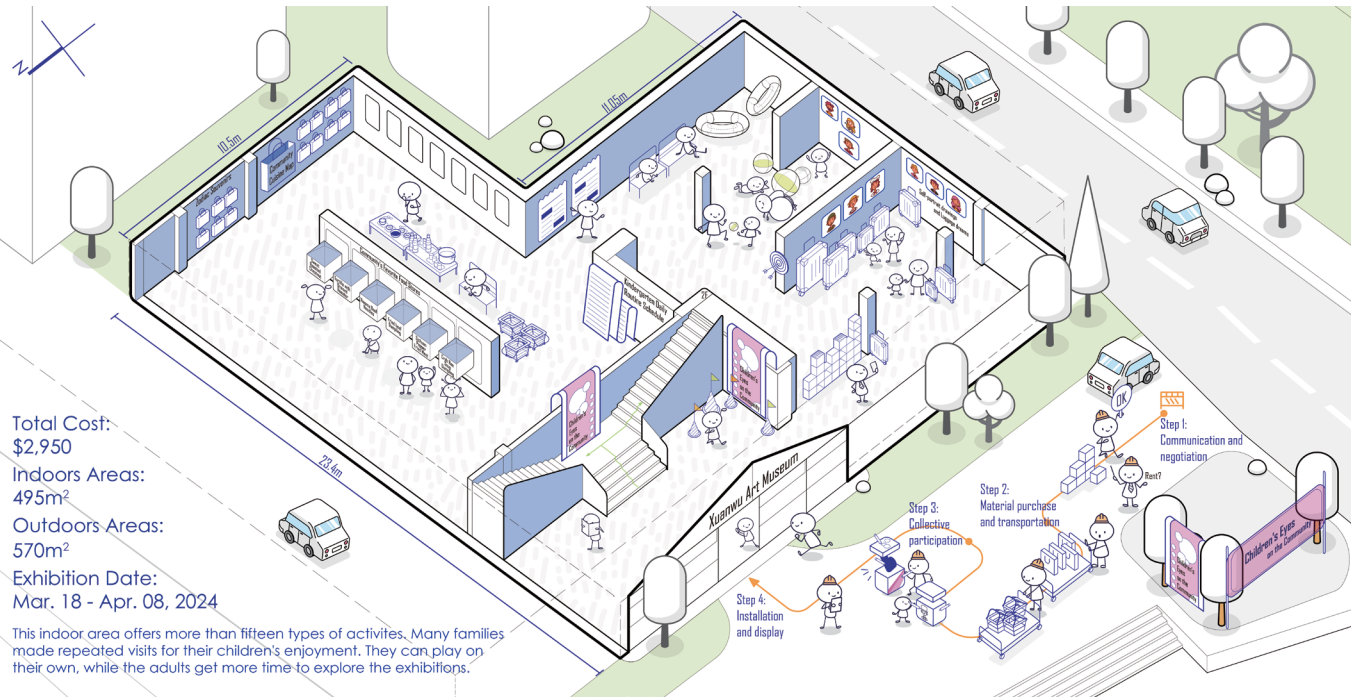
Planted half a century ago by people who worked and lived here, the earliest group of locals in the community. These trees bear witness to the history of the community. Today, their grandchildren reconnect with the area in another way. On the day before the events opening, 18 sycamore trees on both sides of the exhibition hall's entrance road were decorated with celebratory elements by local families.

MARCH 18, 2024 2:00PM



Community managers provided us with the hall for free, as well as some financial support for the exhibition. The opening day of the exhibition attracted over 400 visitors to the venue. The event in question saw the convergence of two groups: Local families and the community's new residents. The result was the establishment of new social relationships, which thrived in a positive atmosphere.

WELCOME TO THE SHOW!

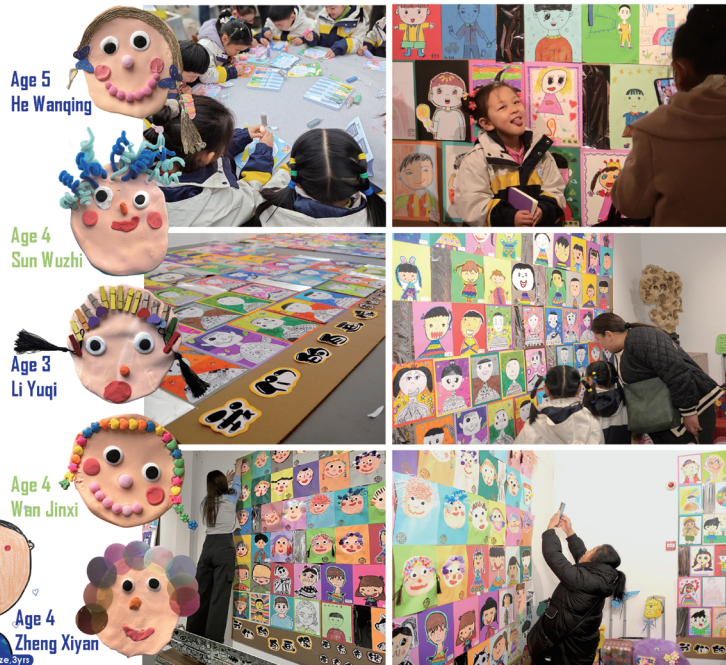


Total Cost:
\$2,950
Indoors Areas:
495m²
Outdoors Areas:
570m²
Exhibition Date:
Mar. 18 - Apr. 08, 2024

This indoor area offers more than fifteen types of activities. Many families made repeated visits for their children's enjoyment. They can play on their own, while the adults get more time to explore the exhibitors.

Drawing a self-portrait

Along side the children from SJYY, we also invited some primary school students from Suojin community to take part in a drawing together. During the exhibition, 469 self-portraits were grouped together and stuck on eight large sheets of cardboards. These were then hung on the wall near the entrance of the exhibition hall.



Age 5
He Wangqing

Age 4
Sun Wuzhi

Age 3
Li Yuqi

Age 4
Wan Jinxi

Age 4
Zheng Xiyan

YOUR FAVORITE RESTAURANT IS MY HOME

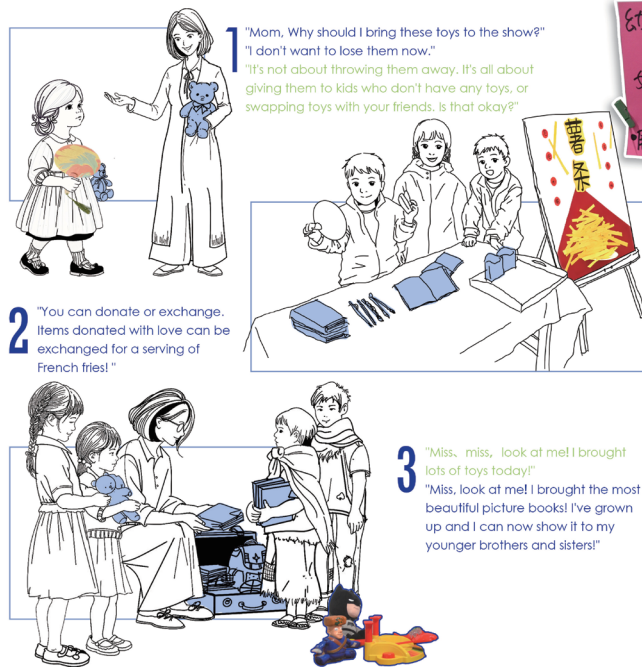
Community's favorite food stores
We invited a total of 21 food shops based on recommendations from local residents and online ratings. Most of them are immigrant families from other provinces bringing food and recipe from their home towns.



- \$1.5 1-Sweet Roasted Chestnut
- \$7.5 2-Tortilla with Braised Roaster
- \$2.5 3-Xiaoma Beef Noodles
- \$4.2 4-Crab Roe Soup Dumplings
- \$0.9 5-Fried beef Dumplings
- \$0.9 6-Chinese style baked meat rolls
- \$5.3 7-Sichuan Pepper Fried Meat
- \$1.5 8-Tofu Pudding with sweet Beans



CHILDREN'S WORLD OF LOVE



幼儿园小朋友的捐赠物品... 如果你也有闲置玩具, 欢迎加入~ 展览结束后, 将统一捐赠

"Children in the community have donated some toys. If you have any extra toys, please donate them here. After the exhibition ends, they will be given to children from low-income families in the community."

Mar. 18, 2024 Spare Toys Exhibition



A large scale community item exchange event attracted more than 300 people to participate.

LEGENDARY CHEST

The almighty "Chest"

These chests can be found throughout the community and are used by residents with great frequency and creativity. Being able to see the familiar "chests" in the exhibition makes everyone feel touched.



Our students and volunteers from SJYY have carefully washed and cleaned each chest and used straps to the securely attach them together.



THE DRIFTING CHAIR





ETHNIC HEADRESS BEADING
(From Shang Dynasty)
Explaining the meaning of traditional patterns, material selection and beading techniques, guiding people to make headdresses with ethnic cultural characteristics.

WATER TRANSFER LACQUER PAINTING
(From Han Dynasty)
Explaining the principles of water transfer strategies and lacquer painting techniques, guiding people to complete the transfer of patterns, color staining and detailing of the fan.

SAND PAINTING
(From Song Dynasty)
Explaining the characteristics of sand, sand layering techniques and color matching methods. Guiding people to create 3D images using sand grains with different textures.

AQUARELLE
(From Tang Dynasty)
Teaching the art of pigment dripping, water staining, and topography. Guiding people to feel the flowing textures and abstract images on the surface of water based media.

UNMATCHED SOUVENIRS



Souvenir design and production:
We designed this commemorative backpack together with members of the SJYY. The most popular of these are the brownish-yellow DuPont paper bags because they feel soft to the touch and are waterproof.

Appreciation
All souvenirs are not for sale and only a limited number were ever made to thank the residents and students who volunteered their time and services at various events throughout the year.

Zodiac and Community Cuisine Map
The community was founded in 1984, the year of the Rat, and 2024 is the year of the Dragon. With this theme in mind, we designed a pattern for the reunion of the twelve Chinese zodiac signs, based on which we created various souvenirs. Each design bears the years that belong to the same Chinese zodiac signs among these forty years. The SJ community is well known in the city for some special types of home cooking. We have also made a cuisine map of the community as part of the souvenir.



1-Learning and discovery
The SJYY's plant cultivation projects were in excellent condition in mid-March. These containers made from recycled plastic cultivated a variety of local vegetables, which were brought to the hall for display.

2-The Drift of the Scenic Chair
After the exhibition, the chairs were sent to different places such as patisserie, sweet store, grocery stores and a tripe noodle shop as further use.

3-Luggage dreams
The theme of the paintings was "Traveling Dreams", and the places each child had been to and wanted to go to were recorded on colorful luggage tags, which were hung on each suitcase.

4-Green Exhibition
Nearly half of the mini playground's equipment were borrowed from residents and the community center.

54 "Volunteer Suitcases"
were collected from the community and painted by different children. After the exhibition, they were returned to their original owners.

All newly purchased playground equipment
were donated to the community center after the exhibition.

MEDIA AND PRESS COVERAGE



Xinhua Newspaper Network

Xuanwu District, Nanjing, is hosting a children's art exhibition that recreates the historical changes of the community's streets and roads from the children's perspectives.

HONORING THE ORDINARY

The owners of vegetable stands, seafood markets, tripe noodle shops, bakeries, butcher shops, Chinese dessert cafés, malatang hotpot bars, chef's private kitchens, Chinese flat-bread bakeries, traditional Chinese pastry shops and various local cuisine restaurants have all received their own "thank-you" letters! The person in charge of the SJYY received double the respect!

