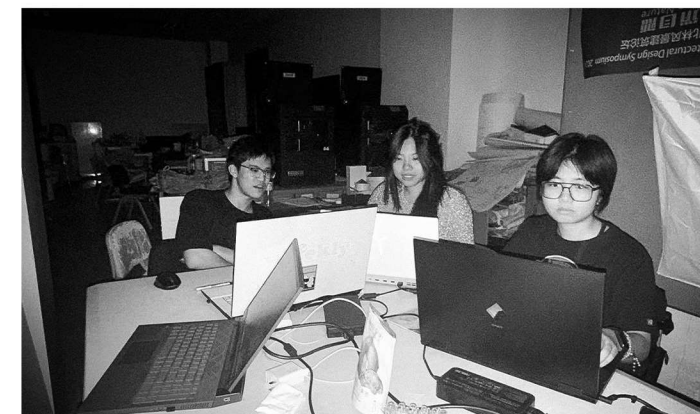




# Beijing Forestry University School of Landscape Architecture



Following the theme “Natural Intelligence...?” of the 13th Barcelona International Landscape Biennial, the School of Landscape Architecture at Beijing Forestry University selected five exemplary student projects from outstanding undergraduate and postgraduate coursework completed in the past two years. Selection criteria emphasized intellectual depth, innovation, completeness, and the projects’ capacity to respond effectively to contemporary landscape challenges at diverse scales.

These projects highlight the continuous exploration and integration of “natural intelligence,” addressing ecological processes related to wildlife, plants, water systems, and urban environments. They illustrate the school’s commitment to sustainability and ecological resilience through landscape research, education, and practice at various scales—from regional to site-specific interventions. The school’s landscape education is also deeply grounded in nature-based solutions and applying natural intelligence (NAI) to address climate change, biodiversity conservation, and social inclusion. Collectively, this work demonstrates how faculty and students advance landscape innovation by applying “natural intelligence,” responding to global challenges such as climate change and human health, and providing inspiration and insight for future practices.



# MAN & THE LEGACY OF RAILWAY

WUDAOKOU RAILWAY PARK DESIGN  
BEIJING · CHINA



1962

Surrounded by fields and villages, the existence of the railway has had little effect on the people.



1977

Settlements began to expand in the direction of Wudaokou, but the rail doesn't cause much trouble.



2001

The city devoured the Wudaokou area, fierce conflicts between the rail and residents began to appear.



2010

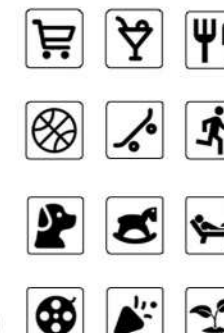
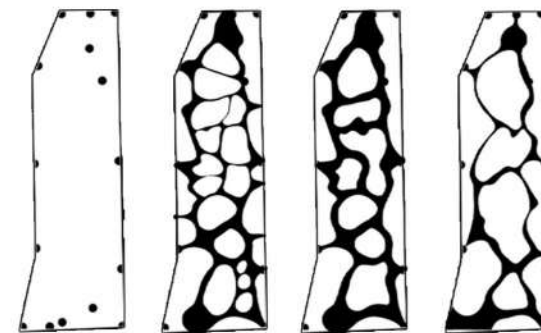
More congested plots, more traffic jams showed up, waiting for the train to pass has become a way of life.



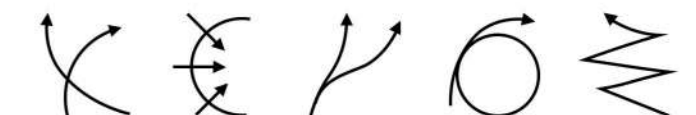
2020

Being removed, the hundred-year-old railway has finally come to its end, leaving Wudaokou a scar.

CONCEPT 1:  
STRENGTHEN THE URBAN FUNCTIONS



CONCEPT 2:  
WEAVING THE RAILWAY INTO THE URBAN  
FABRIC WITH LANDSCAPE



Country/City

China/Beijing

University / School

Beijing Forestry University School of Landscape Architecture

Academic year

2024-2025

Title of the project

Man and the legacy of railway - Wudaokou Railway Park Design

Authors

Yehong Yuan, Weiwei Ma



<b>Title of the project</b>	Man and the legacy of railway - Wudaokou Railway Park Design
<b>Authors</b>	Yehong Yuan, Weiwei Ma
<b>Title of the course</b>	Urban Public Space Planning and Design
<b>Academic year</b>	2024-2025
<b>Teaching Staff</b>	Linghao Cai, Qingwei Cui
<b>Department / Section / Program of belonging</b>	Bachelor of Landscape Architecture
<b>University / School</b>	Beijing Forestry University School of Landscape Architecture



#### Written statement, short description of the project in English, no more than 250 words

The Wudaokou Railway Park explores the transformative possibilities hidden within urban infrastructure, reshaping railway fragments into meaningful landscape experiences. Set upon a former section of the century-old Beijing-Zhangjiakou Railway, this site once harmoniously merged railway activities with natural open farmland. However, drastic urban growth gradually encroached upon this natural context, embedding the rail lines deep into the dense urban fabric. After ceasing operation in 2016, the railway tracks became inaccessible, trapped behind fences and vegetation, turning historical infrastructure into disconnected grey patches and negative urban spaces.

Our design seeks to reclaim and revitalize these forgotten infrastructures, turning unreachable segments of railway into approachable fragments of urban history. By optimized pathway systems informed by intelligent algorithms, the design naturally guides pedestrian movement, creating meandering routes that reconnect the city fabric. Sculptural landforms carefully reference and respond to the varied characteristic landscapes originally found along the historic railway trajectory, seamlessly enhancing user experiences and promoting closer connectivity with history and surrounding environments.

Moreover, we strategically integrate iconic railway elements—such as weathered rails, sleepers, gravel, weathering steel, and concrete blocks—into the existing site conditions, transforming isolated infrastructure into vivid spatial memories. The tangible presence of these symbolic elements actively awakens site memories, fostering curiosity, exploration, and emotional bonding. By combining intelligent optimization of circulation networks, terrain forms echoing historical regional landforms, and symbolic integration of railway heritage elements, the park reinvigorates urban life, reconnecting communities with their collective memory, and establishing a vibrant dialogue among history, nature, and urban experiences.

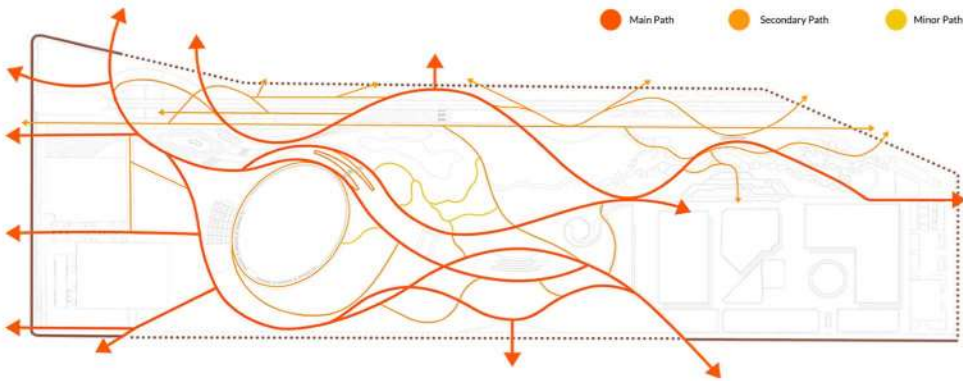
#### Barcelona International Landscape Biennial

Contact via email:  
biennialadm@coac.net

Venue:  
COAC - Col·legi Oficial d'Arquitectes de Catalunya  
Carrer Arcs 1-3, 08002 Barcelona - Spain



MASTER PLAN



STREAM LINE DIAGRAM

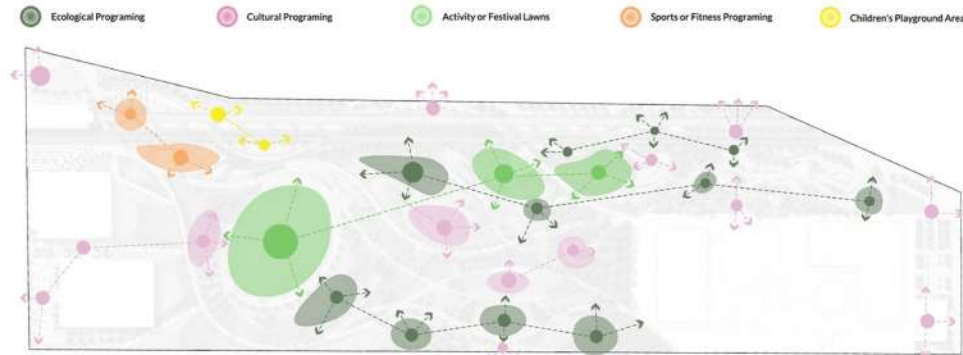
The main garden road is organized in conjunction with the existing sidewalks in the city, forming a smoother slow-moving system for the area that is both efficient and convenient.

Winding, extending, intertwining, and separating, the railway flows with the terrain, creating a melody of the earth. The network in the design simulates the artificial curved texture formed by large-scale infrastructure, intertwining and extending towards their respective destinations. The curves relate to the terrain, resembling a group of railways traversing through the fields.



ZONING DIAGRAM

The site has a comprehensive functional zoning, featuring a series of activity lawns, a performance theater, a community lounge, sports activity areas, children's play areas, an ecological dry lake, and pet zones. It meets the needs of all age groups, demographics, and types of activities, serving as a vast container that integrates community activities, commercial activities, sports activities, children's play activities, pet activities, and performance activities.

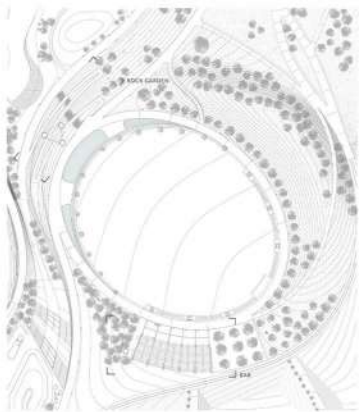


COMMUNITY CONNECTIONS

This design aims to seamlessly integrate natural, cultural, and ecological elements into every corner of the site while establishing organic connections between these elements. We not only emphasize the harmonious unity of the environment but also take into full consideration functionality and practicality, specially reserving ample space for children's activities and sports. Through such planning, we aspire to create a place that is both educational and joyful, enabling users of all ages to find their own niche.



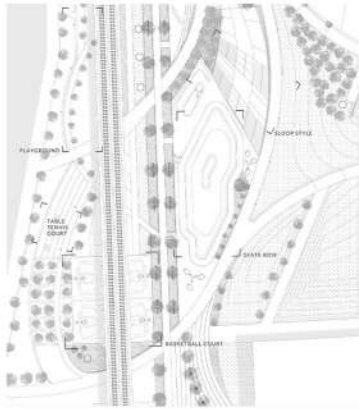
Node Design



THE GREAT LAWN

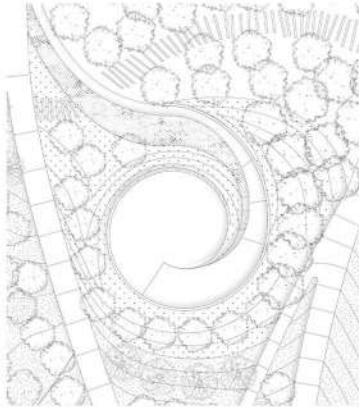
The great lawn is the vibrant center of the park, with the size of 24000 m<sup>2</sup> and equippt with all kind of facilities, it serves as a place for residents to engage in outdoor activities on regular days, and as a venue for large celebrations and community gatherings during important holidays or festivals.

Complementing this is the restaurant and bar on the south side, which becomes the party center as the lights come on at night. The terrain and sound system on the northeast side create perfect acoustics while preventing noise from disturbing the residential area to the northeast.



SPORTS PARK

The sports activity area is well-equipped, featuring various sports facilities such as a skate park, basketball court, exercise equipment, and a running track, which can meet the diverse sports needs of local residents. Complementary facilities include rest benches, restrooms, and a concession stand, allowing for relaxation after exercise.



THE AMPHITHEATER

The amphitheater is located in the northeastern forest and is the smallest and most tranquil of the three performance venues in the park.

It is equipped with a set of wooden seats and a beautifully enclosed terrain, and can serve as a space for contemplation, allowing for solitude and relaxation, and it also provides a relatively quiet venue for musicians, singers, and artists to connect.