

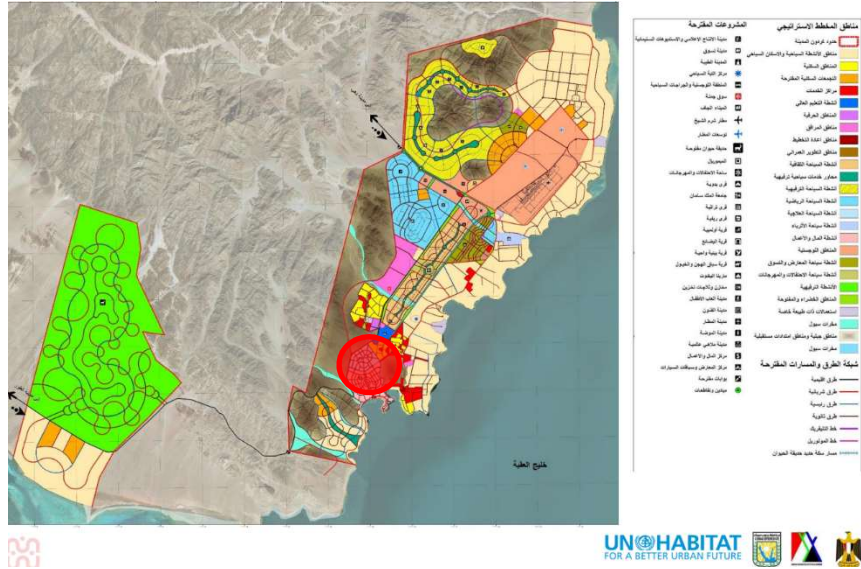


Please provide a 250-word text explaining the selection criteria used to choose the five projects representing the school in the Ribas Piera. Detail the aspects evaluated, such as conceptual quality, innovation, thematic relevance, technical resolution, or any other criteria considered in the selection process with a single image, characteristic of the academic process, to accompany the text

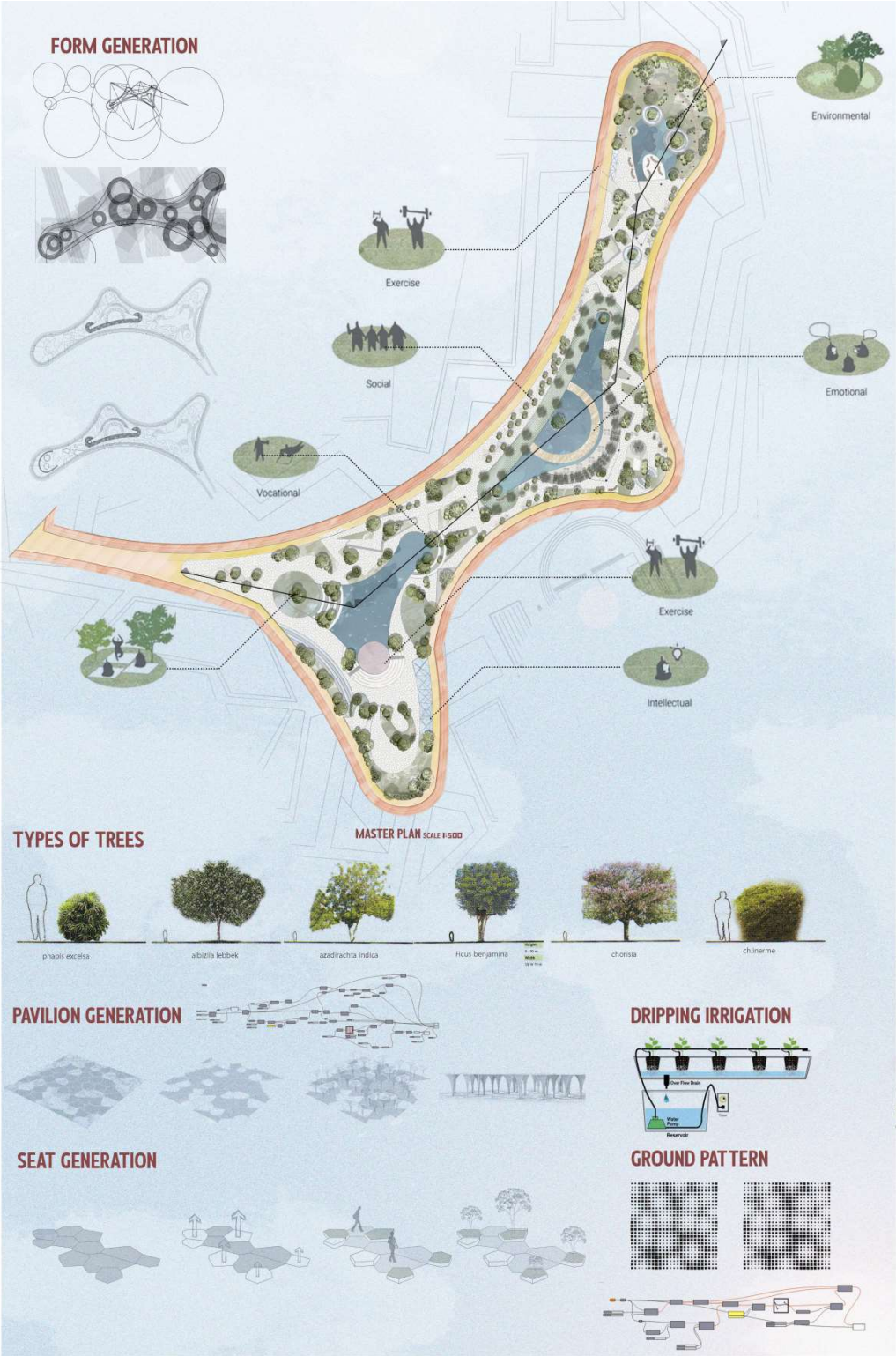
The five chosen projects for the RIBA award were selected based on how well students responded to the governmental strategic plan for Sharm El-Sheikh's development. Evaluation criteria included the strength of the design idea, creativity, relevance to the project theme, and the quality of technical and environmental solutions. Each project was assessed on its effectiveness in addressing user needs, site conditions, and the surrounding context through landscape design. The selection committee aimed for diverse project types, showcasing various landscape design challenges. Some projects focused on service-oriented functions, such as a port and a hospital, while others emphasized cultural and recreational aspects, including a city of arts and an opera house. This variety encouraged students to apply different landscape design strategies tailored to each project's goals. Students designed outdoor spaces that supported the projects' purposes and enhanced user experiences. Some designs emphasized movement and comfort, while others created strong visual impressions or fostered social interaction. They also considered the local environment, climate, and cultural context to develop sustainable landscape solutions.

Importantly, all selected projects align with the development priorities outlined in Sharm El-Sheikh's strategic plan. They reflect the city's aspirations to improve public spaces, promote tourism, and enhance environmental quality. Overall, these projects exemplify a strong grasp of landscape design principles and illustrate how thoughtful outdoor design can contribute meaningfully to the city's future. PLEASE NOTE THAT THIS IS THE ONLY LANDSCAPE ARCHITECTURE COURSE IN ARCHITECTURE SCHOOL.



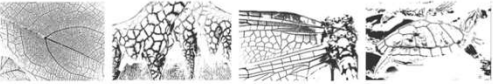


PROJECT LOCATION ON THE STRATEGIC PLAN FOR DEVELOPMENT 2030 SHARM EL-SHIEKH EGYPT



### VORONOI PATTERN

By looking to this photos we can realize that there is a common pattern that is repeated in many things in nature which is Voronoi pater so it was used in the form generation



### WHY VORONOI PATTERN

#### IMPROVED NATURAL VENTILATION:

The Voronoi design allows for natural airflow through the irregular openings, enhancing natural ventilation within the pavilion. This helps reduce the need for air conditioning, saving energy and lowering the hospital's carbon footprint.

#### TEMPERATURE REGULATION:

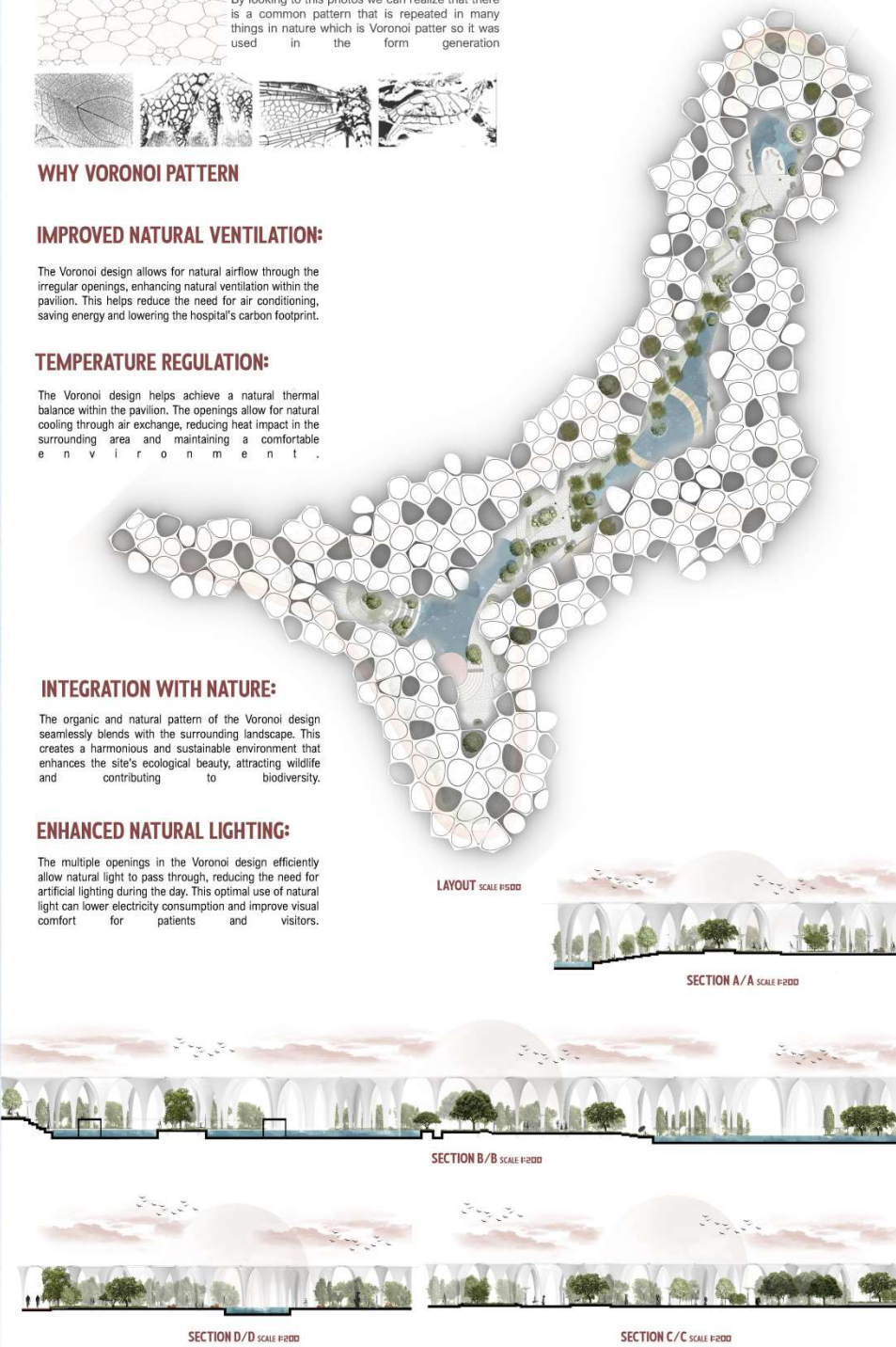
The Voronoi design helps achieve a natural thermal balance within the pavilion. The openings allow for natural cooling through air exchange, reducing heat impact in the surrounding area and maintaining a comfortable environment.

#### INTEGRATION WITH NATURE:

The organic and natural pattern of the Voronoi design seamlessly blends with the surrounding landscape. This creates a harmonious and sustainable environment that enhances the site's ecological beauty, attracting wildlife and contributing to biodiversity.

#### ENHANCED NATURAL LIGHTING:

The multiple openings in the Voronoi design efficiently allow natural light to pass through, reducing the need for artificial lighting during the day. This optimal use of natural light can lower electricity consumption and improve visual comfort for patients and visitors.





Title of the project General Hospital

Authors Ahmed Walid Mahfoz

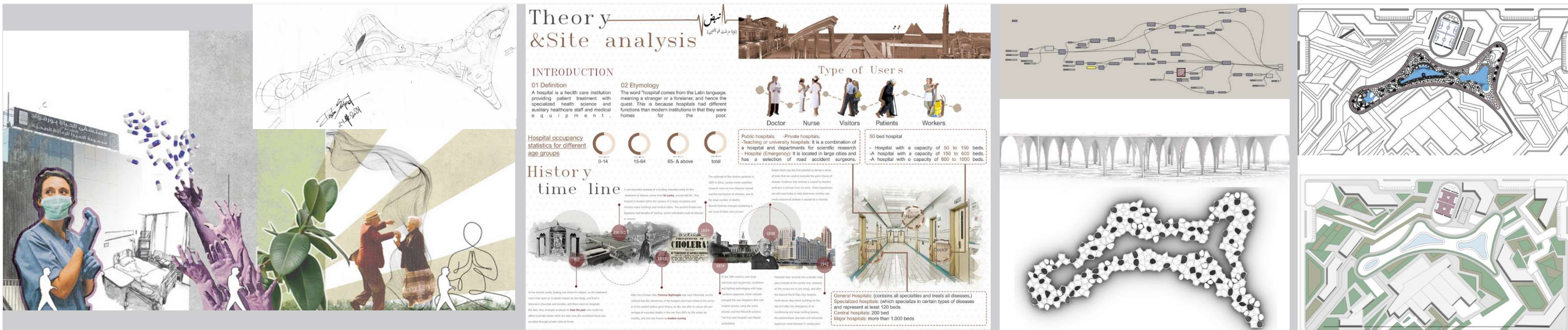
Title of the course Landscape Design Studio

Academic year 2023 - 2024

Teaching Staff Dr/ Rasha Sayed – L.A Sara Sayed

Department / Section / Program of belonging Architecture Program

University / School King Salman International University/ Faculty of Architecture



## Written statement, short description of the project in English, no more than 250 words

The project is a landscape design proposal for a public hospital in Sharm El-Sheikh. The central concept focuses on organizing outdoor spaces as functional extensions of the hospital's internal departments, enhancing the experience for patients, visitors, and staff. A key feature is the healing garden situated at the heart of the site. This space is designed to promote the well-being of patients, doctors, nurses, and administrative staff, offering areas for light physical activity, relaxation, and interaction with nature. The aim is to reduce stress, support recovery, and enhance mental health by providing quiet, green spaces for rest and reflection.

Additionally, the design includes a research garden featuring local medicinal plants. This space serves a dual purpose: it supports medical and botanical research while helping to preserve native plant species valuable to the region. The layout encourages educational use and is visually integrated into the overall landscape. The design also takes into account the local climate and environmental conditions of Sharm El-Sheikh by incorporating native plants, shaded walkways, and water-efficient solutions. Ultimately, the landscape design strives to create a healthy, supportive, and sustainable environment that complements the hospital's medical functions and meets the needs of both users and the wider community.

## Barcelona International Landscape Biennial

Contact via email:  
biennaladm@coac.net

Venue:  
COAC - Col·legi Oficial d'Arquitectes de Catalunya  
Carrer Arcs 1-3, 08002 Barcelona - Spain





## LOCATION

The SHEFAA project is located in Sharm El Sheikh, Egypt, in a serene, natural area that provides an ideal environment for comprehensive healthcare.



## LAWS & REGULATIONS OVERPOPULATION

Building Coverage: %20-30 to allow for green spaces and parking.



## ACCESSIBILITY



## NEIGHBORHOOD

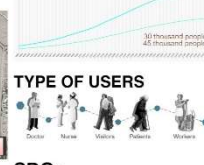


## PHYSICAL CONDITIONS



## OVERPOPULATION

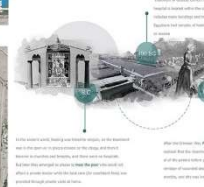
Building Coverage: %20-30 to allow for green spaces and parking.



## ACCESSIBILITY



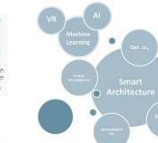
## NEIGHBORHOOD



## PHYSICAL CONDITIONS



## PROJECT THEME



## SECURITY

Physical Security: Controlled access and surveillance.  
Emergency Preparedness: Disaster response protocols.  
Fire Safety: Advanced detection systems.  
Cybersecurity: Strong data protection.  
Infection Control: Enhanced sanitation.

## SDGs



## ACCESSIBILITY & MOVEMENT

STATISTICS FOR DIFFERENT AGE GROUPS

TIME LINE



## SWOT ANALYSIS

A SWOT analysis of Shefaa Hospital's location highlights strengths like accessibility and a natural environment, weaknesses such as space limitations, opportunities like becoming a health hub, and threats like local hazards.

**Strengths:** Accessibility: Close to community, improving access. Natural Setting: Scenic, healing environment. Sustainability: Supports use of local plants/resources.

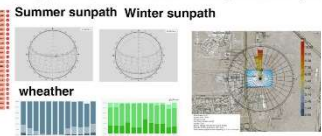
**Weaknesses:** Space Constraints: Limits future expansion. Infrastructure Needs: May need road and utility upgrades.

**Opportunities:** Community Hub: Enhances local health services. Health Tourism: Attractive for visitors seeking care.

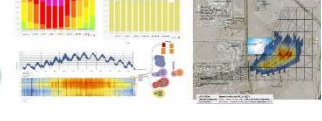
**Threats:** Environmental Risks: Vulnerable to local hazards. Regulations: Potential zoning limitations.

## CLIMATE

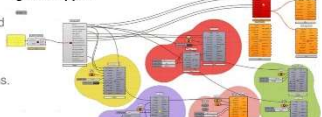
Sharm El Sheikh climate is hot and dry in summer, its very specific, and the weather is sunny most of the year.



## CLIMATE SOLAR ORIENTATION



## NEIGHBORHOODS



## OVERPOPULATION



## ECONOMIC FACTORS

Robert Koch was the first scientist to devise a series of tests that we used to evaluate the germ theory of disease. Evidence that anthrax is caused by Bacillus anthracis is derived from his work. These hypotheses are still used today to help determine whether any newly discovered disease is caused by a microbe.

## TYPE OF USERS

Doctor, Nurse, Visitors, Patients, Workers

## SITE HISTORY & SIGNIFICANCE

HISTORICALLY: Natural resources like pearls and minerals attracted limited development focused on extraction.

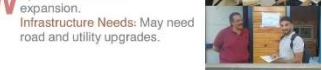


## TYPE OF USERS

Doctor, Nurse, Visitors, Patients, Workers

## SITE HISTORY & SIGNIFICANCE

HISTORICALLY: Natural resources like pearls and minerals attracted limited development focused on extraction.



## TYPE OF USERS

Doctor, Nurse, Visitors, Patients, Workers

## SITE HISTORY & SIGNIFICANCE

HISTORICALLY: Natural resources like pearls and minerals attracted limited development focused on extraction.

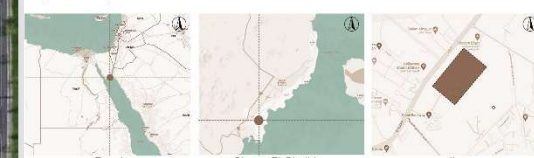


# GENERAL HOSPITAL SHARM EL SHEIKH

## INTRODUCTION

**01 Definition**  
A hospital is a health care institution providing patient treatment with specialized health science and auxiliary healthcare staff and medical equipment.

**02 Etymology**  
The word "hospital" comes from the Latin language, meaning a stranger or a foreigner, and hence the quest. This is because hospitals had different functions than modern institutions in that they were homes for the poor.



## Cultural & Man-Made Features

### HISTORICAL REQUIREMENTS & FACTORS

#### ARCHITECTURAL FACTORS

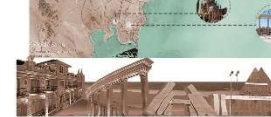
##### HISTORICALLY:

The city's location played a strategic role, controlling access to the Red Sea. Natural resources like pearls and minerals attracted limited development focused on extraction. Bedouin tribes inhabited the area with their unique, adaptable architecture.

##### MODERN DEVELOPMENT:

Since the 1960s, tourism has driven rapid growth, leading to extensive tourist infrastructure (hotels, resorts, transportation). Dominance of modern and international architectural styles. Growing interest in sustainable practices in newer developments.

##### CLIMATE SOLAR ORIENTATION



##### NEIGHBORHOODS

MIN STREET, SIDE STREET, STREETS FOR PEOPLE

##### OVERPOPULATION

50 thousand people, 45 thousand people

##### ECONOMIC FACTORS

Robert Koch was the first scientist to devise a series of tests that we used to evaluate the germ theory of disease. Evidence that anthrax is caused by Bacillus anthracis is derived from his work. These hypotheses are still used today to help determine whether any newly discovered disease is caused by a microbe.

##### TYPE OF USERS

Doctor, Nurse, Visitors, Patients, Workers

##### SITE HISTORY & SIGNIFICANCE

HISTORICALLY: Natural resources like pearls and minerals attracted limited development focused on extraction.



##### TYPE OF USERS

Doctor, Nurse, Visitors, Patients, Workers

##### SITE HISTORY & SIGNIFICANCE

HISTORICALLY: Natural resources like pearls and minerals attracted limited development focused on extraction.



##### TYPE OF USERS

Doctor, Nurse, Visitors, Patients, Workers

##### SITE HISTORY & SIGNIFICANCE

HISTORICALLY: Natural resources like pearls and minerals attracted limited development focused on extraction.



##### TYPE OF USERS

Doctor, Nurse, Visitors, Patients, Workers

##### SITE HISTORY & SIGNIFICANCE

HISTORICALLY: Natural resources like pearls and minerals attracted limited development focused on extraction.



##### TYPE OF USERS

Doctor, Nurse, Visitors, Patients, Workers

##### SITE HISTORY & SIGNIFICANCE

HISTORICALLY: Natural resources like pearls and minerals attracted limited development focused on extraction.



##### TYPE OF USERS

Doctor, Nurse, Visitors, Patients, Workers

##### SITE HISTORY & SIGNIFICANCE

HISTORICALLY: Natural resources like pearls and minerals attracted limited development focused on extraction.



##### TYPE OF USERS

Doctor, Nurse, Visitors, Patients, Workers

##### SITE HISTORY & SIGNIFICANCE

HISTORICALLY: Natural resources like pearls and minerals attracted limited development focused on extraction.



##### TYPE OF USERS

Doctor, Nurse, Visitors, Patients, Workers

##### SITE HISTORY & SIGNIFICANCE

HISTORICALLY: Natural resources like pearls and minerals attracted limited development focused on extraction.

## CIRCULATION

MIN STREET, SIDE STREET, STREETS FOR PEOPLE

## SOIL

Sharm El Sheikh, located on the southern tip of the Sinai Peninsula in Egypt, typically has sandy soil. Sandy soil is prevalent in coastal areas, including many beach destinations, and it is characterized by its large particles and good drainage properties.

## TOPOGRAPHY

Sharm El Sheikh, located on the southern tip of the Sinai Peninsula in Egypt, typically has sandy soil. Sandy soil is prevalent in coastal areas, including many beach destinations, and it is characterized by its large particles and good drainage properties.

## CLIMATE SOLAR ORIENTATION

Sharm El Sheikh, located on the southern tip of the Sinai Peninsula in Egypt, typically has sandy soil. Sandy soil is prevalent in coastal areas, including many beach destinations, and it is characterized by its large particles and good drainage properties.

## NEIGHBORHOODS

MIN STREET, SIDE STREET, STREETS FOR PEOPLE

## OVERPOPULATION

50 thousand people, 45 thousand people

## ECONOMIC FACTORS

Robert Koch was the first scientist to devise a series of tests that we used to evaluate the germ theory of disease. Evidence that anthrax is caused by Bacillus anthracis is derived from his work. These hypotheses are still used today to help determine whether any newly discovered disease is caused by a microbe.

## TYPE OF USERS

Doctor, Nurse, Visitors, Patients, Workers

## SITE HISTORY & SIGNIFICANCE

HISTORICALLY: Natural resources like pearls and minerals attracted limited development focused on extraction.



## TYPE OF USERS

Doctor, Nurse, Visitors, Patients, Workers

## SITE HISTORY & SIGNIFICANCE

HISTORICALLY: Natural resources like pearls and minerals attracted limited development focused on extraction.

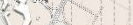


## TYPE OF USERS

Doctor, Nurse, Visitors, Patients, Workers

## SITE HISTORY & SIGNIFICANCE

HISTORICALLY: Natural resources like pearls and minerals attracted limited development focused on extraction.



## TYPE OF USERS

Doctor, Nurse, Visitors, Patients, Workers

## SITE HISTORY & SIGNIFICANCE

HISTORICALLY: Natural resources like pearls and minerals attracted limited development focused on extraction.



## TYPE OF USERS

Doctor, Nurse, Visitors, Patients, Workers

## SITE HISTORY & SIGNIFICANCE

HISTORICALLY: Natural resources like pearls and minerals attracted limited development focused on extraction.



## TYPE OF USERS

Doctor, Nurse, Visitors, Patients, Workers

## SITE HISTORY & SIGNIFICANCE

HISTORICALLY: Natural resources like pearls and minerals attracted limited development focused on extraction.



## TYPE OF USERS

Doctor, Nurse, Visitors, Patients, Workers

## SITE HISTORY & SIGNIFICANCE

HISTORICALLY: Natural resources like pearls and minerals attracted limited development focused on extraction.



## TYPE OF USERS

Doctor, Nurse, Visitors, Patients, Workers

## SITE HISTORY & SIGNIFICANCE

HISTORICALLY: Natural resources like pearls and minerals attracted limited development focused on extraction.



## TYPE OF USERS

Doctor, Nurse, Visitors, Patients, Workers

## SITE HISTORY & SIGNIFICANCE

HISTORICALLY: Natural resources like pearls and minerals attracted limited development focused on extraction.



## TYPE OF USERS

Doctor, Nurse, Visitors, Patients, Workers

## SITE HISTORY & SIGNIFICANCE

HISTORICALLY: Natural resources like pearls and minerals attracted limited development focused on extraction.

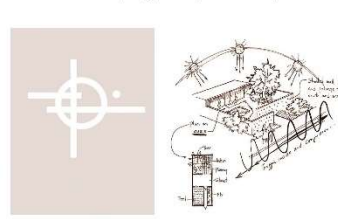


## TYPE OF USERS

Doctor, Nurse, Visitors, Patients, Workers

## LAND SCAPE CONCEPT

The project should express the beauty of Nature and Art to achieve comfort inspiring public space for everyone.



## CIRCULATION

MIN STREET, SIDE STREET, STREETS FOR PEOPLE

## SOIL

Sharm El Sheikh, located on the southern tip of the Sinai Peninsula in Egypt, typically has sandy soil. Sandy soil is prevalent in coastal areas, including many beach destinations, and it is characterized by its large particles and good drainage properties.

## TOPOGRAPHY

Sharm El Sheikh, located on the southern tip of the Sinai Peninsula in Egypt, typically has sandy soil. Sandy soil is prevalent in coastal areas, including many beach destinations, and it is characterized by its large particles and good drainage properties.

## CLIMATE SOLAR ORIENTATION

Sharm El Sheikh, located on the southern tip of the Sinai Peninsula in Egypt, typically has sandy soil. Sandy soil is prevalent in coastal areas, including many beach destinations, and it is characterized by its large particles and good drainage properties.

## NEIGHBORHOODS

MIN STREET, SIDE STREET, STREETS FOR PEOPLE

## OVERPOPULATION

50 thousand people, 45 thousand people

## ECONOMIC FACTORS

Robert Koch was the first scientist to devise a series of tests that we used to evaluate the germ theory of disease. Evidence that anthrax is caused by Bacillus anthracis is derived from his work. These hypotheses are still used today to help determine whether any newly discovered disease is caused by a microbe.

## TYPE OF USERS

Doctor, Nurse, Visitors, Patients, Workers

## SITE HISTORY & SIGNIFICANCE

HISTORICALLY: Natural resources like pearls and minerals attracted limited development focused on extraction.



## TYPE OF USERS

Doctor, Nurse, Visitors, Patients, Workers

## SITE HISTORY & SIGNIFICANCE

HISTORICALLY: Natural resources like pearls and minerals attracted limited development focused on extraction.



## TYPE OF USERS

Doctor, Nurse, Visitors, Patients, Workers

## SITE HISTORY & SIGNIFICANCE

HISTORICALLY: Natural resources like pearls and minerals attracted limited development focused on extraction.



## TYPE OF USERS

Doctor, Nurse, Visitors, Patients, Workers

## SITE HISTORY & SIGNIFICANCE

HISTORICALLY: Natural resources like pearls and minerals attracted limited development focused on extraction.



## TYPE OF USERS

Doctor, Nurse, Visitors, Patients, Workers

## SITE HISTORY & SIGNIFICANCE

HISTORICALLY: Natural resources like pearls and minerals attracted limited development focused on extraction.



## TYPE OF USERS

Doctor, Nurse, Visitors, Patients, Workers

## SITE HISTORY & SIGNIFICANCE

HISTORICALLY: Natural resources like pearls and minerals attracted limited development focused on extraction.



## TYPE OF USERS

Doctor, Nurse, Visitors, Patients, Workers

## SITE HISTORY & SIGNIFICANCE

HISTORICALLY: Natural resources like pearls and minerals attracted limited development focused on extraction.



## TYPE OF USERS

Doctor, Nurse, Visitors, Patients, Workers

## SITE HISTORY & SIGNIFICANCE

HISTORICALLY: Natural resources like pearls and minerals attracted limited development focused on extraction.



## TYPE OF USERS

Doctor, Nurse, Visitors, Patients, Workers

## SITE HISTORY & SIGNIFICANCE

HISTORICALLY: Natural resources like pearls and minerals attracted limited development focused on extraction.



## TYPE OF USERS

Doctor, Nurse, Visitors, Patients, Workers

## SITE HISTORY & SIGNIFICANCE

HISTORICALLY: Natural resources like pearls and minerals attracted limited development focused on extraction.

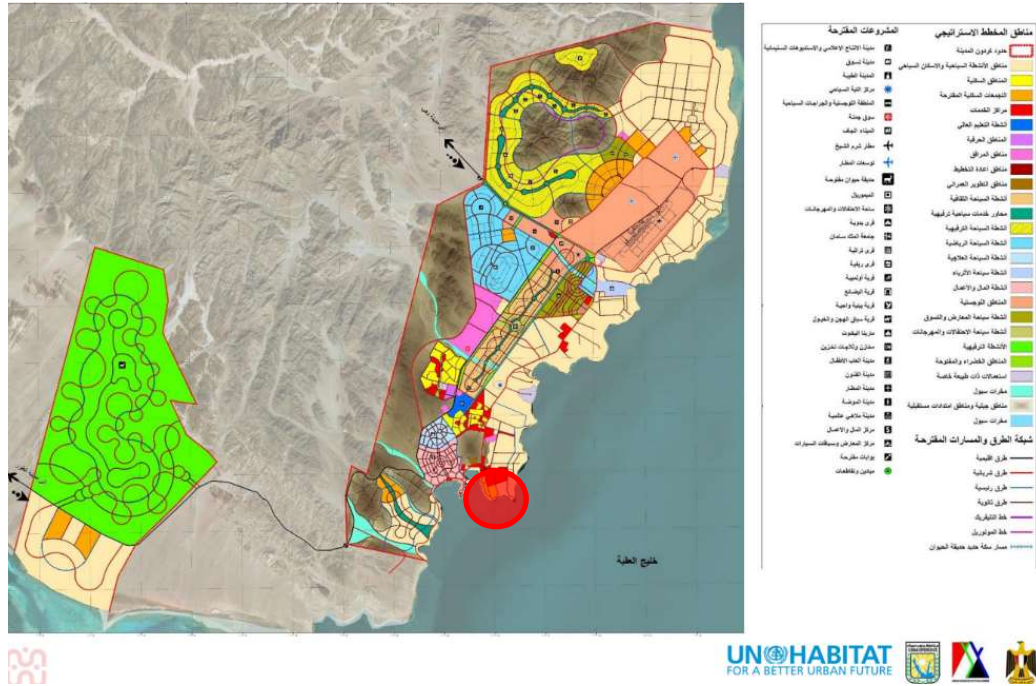


## TYPE OF USERS

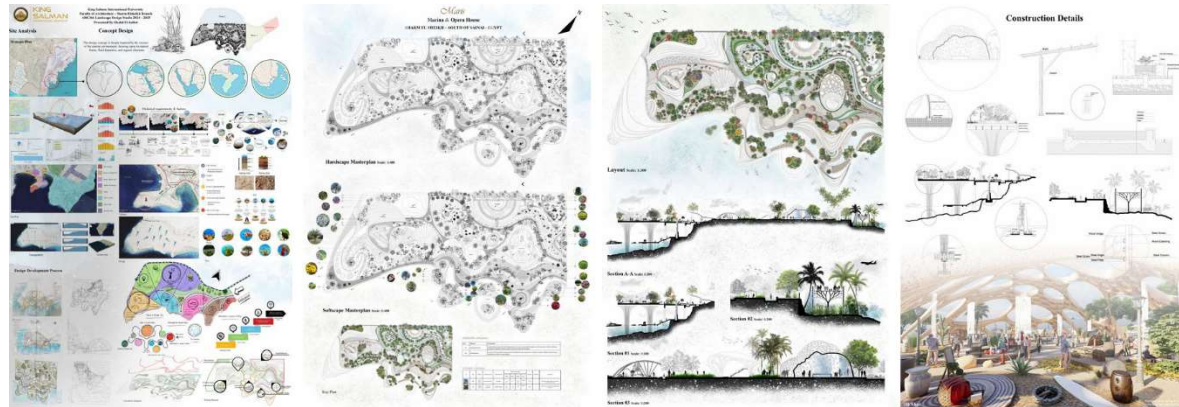
Doctor, Nurse, Visitors, Patients, Workers







PROJECT LOCATION ON THE STRATEGIC PLAN FOR DEVELOPMENT 2030  
SHARM EL-SHIEKH  
EGYPT



The landscape design successfully complements and enhances the overall vision of the graduation project by integrating environmental, cultural, and functional elements. It creates a cohesive and inviting outdoor experience that reflects the project's identity, supports sustainability, and meets the needs of the users. This integration demonstrates the importance of landscape as a vital component in creating a holistic and engaging architectural environment.



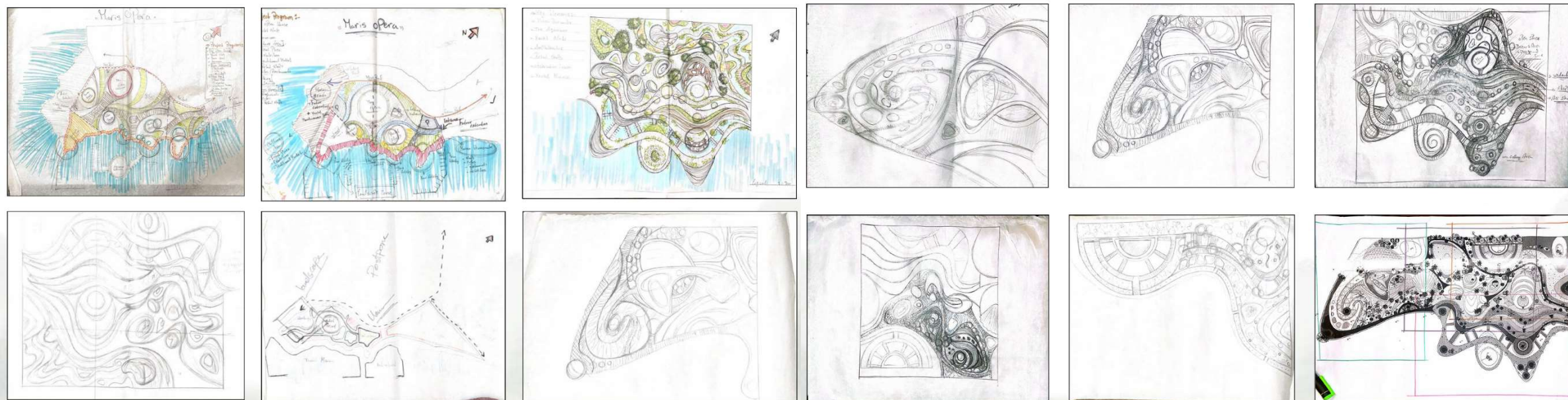
Country/City	Egypt/ Sharm El-Sheikh
University/School	King Salman International University / Faculty of Architecture
Academic year	2024 - 2025
Title of the project	Marina & Opera House
Authors	Shahd Mohamed El Hallab



Title of the project	Marina & Opera House
Authors	Shahd Mohamed El Hallab
Title of the course	Landscape Design Studio
Academic year	2024- 2025
Teaching Staff	Dr/ Rasha Sayed – L.A Sara Sayed – T.A Islam Ashraf
Department / Section / Program of belonging	Architecture Program
University / School	King Salman International University/ Faculty of Architecture

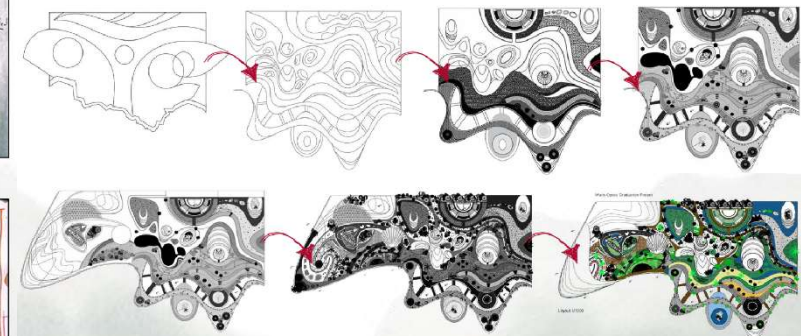


DESIGN PROCESS



DESIGN PROCESS

DESIGN PROCESS



#### Written statement, short description of the project in English, no more than 250 words

The project is a landscape design proposal for a Marina and Opera House in Sharm El-Sheikh, aimed at creating a unique cultural and recreational destination that aligns with the city's tourism development goals. The design integrates entertainment, heritage, and hospitality to attract both local residents and international visitors. At the center of the project is the Opera House, a cultural landmark designed to host artistic performances and public events. Surrounding this focal point is a Yacht Club that offers a premium leisure experience for yacht owners and guests. The marina features organized docking areas, pedestrian promenades, shaded seating zones, and scenic viewpoints overlooking the water. Another key component is a cultural zone that highlights the region's history and identity through exhibitions and outdoor installations, promoting learning, community engagement, and cultural exchange. The master plan also includes a boutique hotel for visitors, along with administrative and commercial services to support the site's daily operations.

The landscape design seamlessly connects all areas through green corridors, shaded pathways, and outdoor gathering spaces that reflect the local climate and character of Sharm El-Sheikh. Native plants, water features, and comfortable seating areas create an inviting and sustainable environment. Overall, the project offers a balanced mix of culture, recreation, and hospitality, strengthening Sharm El-Sheikh's status as a premier destination for cultural and leisure tourism.

#### Barcelona International Landscape Biennial

Contact via email:  
biennialadm@coac.net

Venue:  
COAC - Col·legi Oficial d'Arquitectes de Catalunya  
Carrer Arcs 1-3, 08002 Barcelona - Spain



**KING SALMAN INTERNATIONAL UNIVERSITY**  
 Faculty of Architecture – Sharm El Sheikh Branch  
 ARC366 Landscape Design Studio 2024 – 2025  
 Presented by: Shahd El-halab

### Site Analysis

**Strategic Plan**

**Concept Design**

The design concept is deeply inspired by the essence of the marine environment, drawing upon its natural forms, fluid dynamics, and organic elements.

**Historical requirements & factors**

**Site Analysis**

**Design Development Process**

**Site Analysis**

**Design Development Process**

*Maris*  
**Marina & Opera House**  
 SHARM EL SHEIKH – SOUTH OF SAINAI - EGYPT

### Hardscape Masterplan scale: 1:400

### Softscape Masterplan Scale: 1:400

### Key Plan

**LEGEND**

**EXISTING**

- Power Substation
- Road Network
- Waterway
- Existing Vegetation
- Topography
- Soil
- Water
- Sandy Soil
- Rocky Soil

**PROPOSED**

- Marina
- Opera House
- Cultural & Entertainment Area
- Residential Area
- Commercial Area
- Public Space
- Green Space
- Waterway
- Topography
- Soil
- Water
- Sandy Soil
- Rocky Soil

### Construction Details

**3D Shot**

**Construction Details**

**3D Shot**

### Section A-A Scale: 1:300

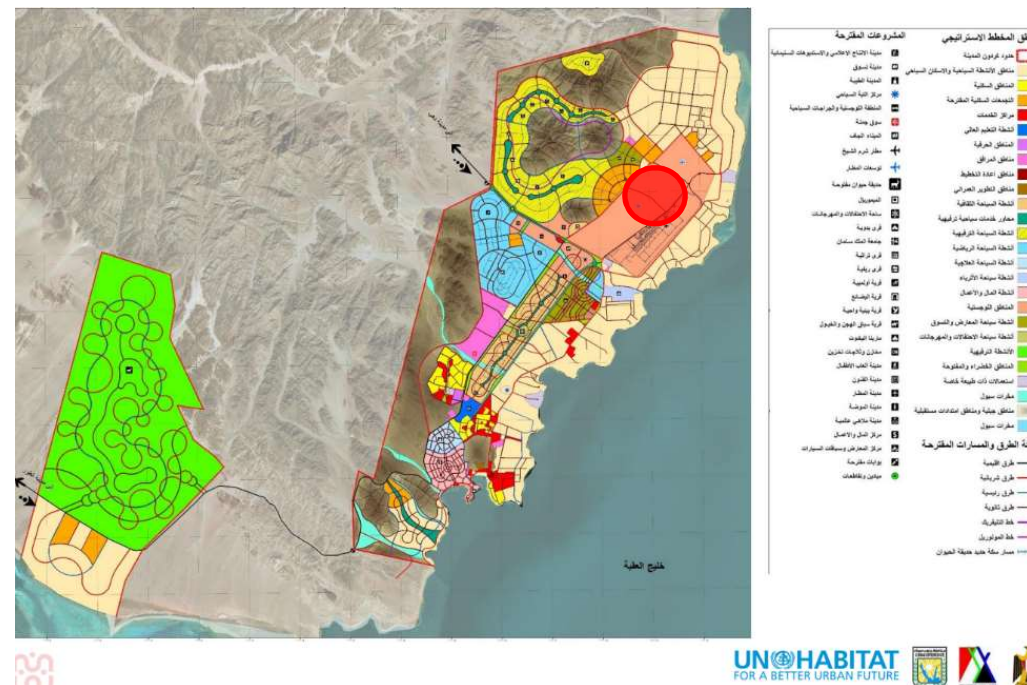
### Section 01 Scale: 1:200

### Section 02 Scale: 1:200

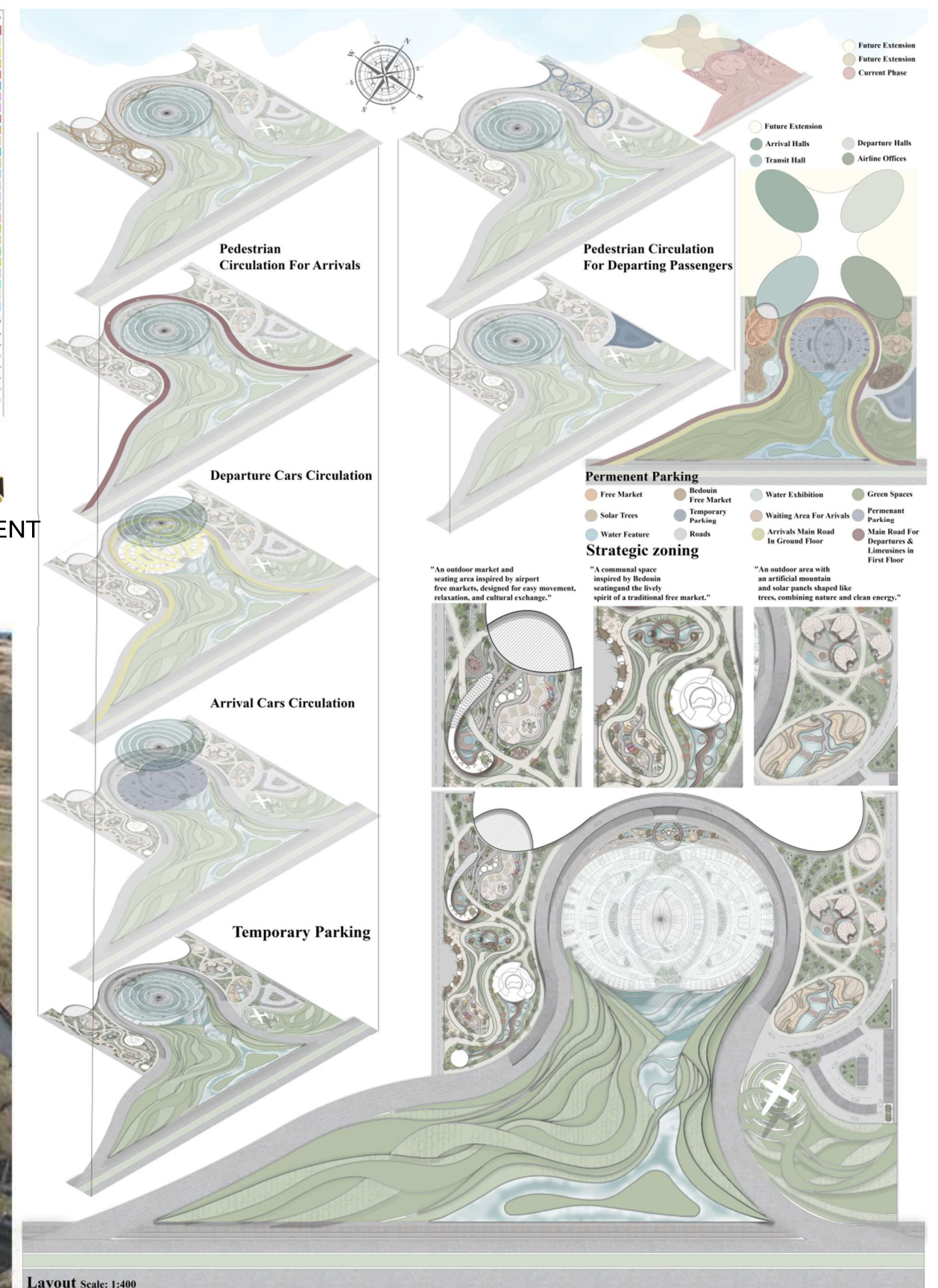
### Section 01 Scale: 1:200

### Section 02 Scale: 1:200





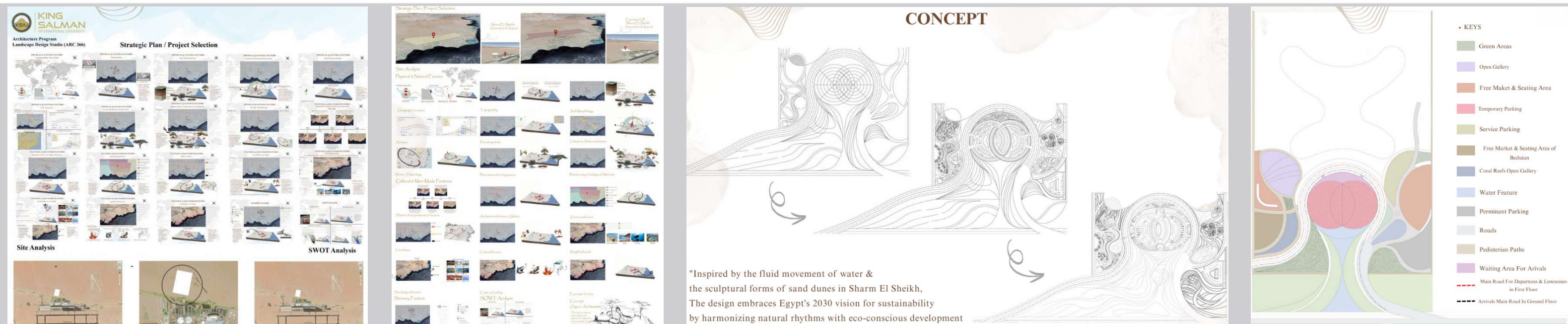
PROJECT LOCATION ON THE STRATEGIC PLAN FOR DEVELOPMENT 2030  
SHARM EL-SHIEKH  
EGYPT



Country/City Egypt/ Sharm El-Sheikh  
University/School King Salman International University / Faculty of Architecture  
Academic year 2024 - 2025  
Title of the project Airport Extension  
Authors Nouran Khaled



Title of the project	Airport Extension
Authors	Nouran Khaled
Title of the course	Landscape Design Studio
Academic year	2024- 2025
Teaching Staff	Dr/ Rasha Sayed – L.A Sara Sayed – T.A Islam Ashraf
Department / Section / Program of belonging	Architecture Program
University / School	King Salman International University/ Faculty of Architecture



Written statement, short description of the project in English, no more than 250 words

The design of the outdoor spaces in front of the airport building aims to create a strong visual memory and a unique psychological experience for visitors and travelers. The project seeks to transform the arrival experience into an engaging and culturally rich journey, leaving a lasting impression. Upon entering the site, visitors are greeted by expansive green landscapes of varying heights, designed to be visually dynamic and environmentally pleasant, providing a refreshing contrast to typical airport environments. At the core of the landscape is a smart and sustainable parking area, seamlessly integrated into the natural surroundings. This solution not only supports environmental goals but also enhances organization and user-friendliness. To make the waiting experience more meaningful, the project features traditional bazaars and small cafés, offering cultural and recreational value. Visitors can explore local crafts, food, and traditions while they wait.

By combining nature, technology, and culture, the outdoor area of the airport transforms into more than just a transitional space; it becomes a memorable part of the travel experience. The design fosters emotional connections and a sense of place, deeply rooted in the region's identity. This thoughtful integration of function and culture ensures that the airport serves not only as a travel gateway but also as a symbol of local heritage and hospitality.

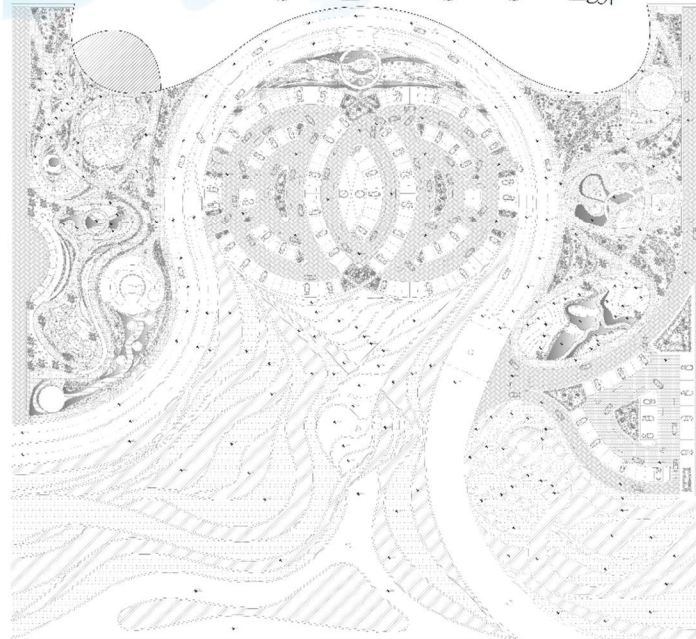
Barcelona International Landscape Biennial

Contact via email:  
biennialadm@coac.net

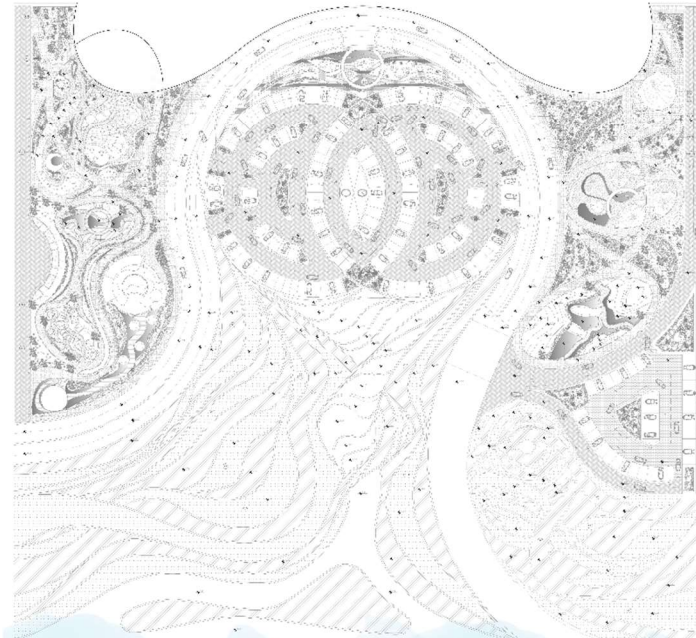
Venue:  
COAC - Col·legi Oficial d'Arquitectes de Catalunya  
Carrer Arcs 1-3, 08002 Barcelona - Spain



# EXPANSION OF SHARM EL-SHEIKH INTERNATIONAL AIRPORT Sharm El-sheikh - South Sinai- Egypt



Hardscape Masterplan Scale: 1:400



Softscape Masterplan Scale: 1:400

1	IN-FRICK(0.1X0.25)m
2	Limestone(0.5x0.5)m
3	Natural grass
4	Water
5	Asphalt
6	Granite (0.5x0.5)m
7	Gravel
8	Wood
9	Baze (2x2)m

## Hardscape Table

### TREES

NO.	CODE	SYMBOL	COMMON NAME	SCIENTIFIC NAME	HEIGHT (m)	SPREAD (m)	PLANTING RATE	PLANTING DISTANCE (m)	PLANTING DATE	PLANTING METHOD	PLANTING COST (USD)	PLANTING COST (EGP)
1	T1		Acacia Tree	Acacia	10	10	10	10	10	10	10	10
2	T2		Phoenix	Phoenix	10	10	10	10	10	10	10	10
3	T3		Artificial Mountain	Artificial Mountain	10	10	10	10	10	10	10	10
4	T4		Water Exhibition	Water Exhibition	10	10	10	10	10	10	10	10
5	T5		Departure Bridge	Departure Bridge	10	10	10	10	10	10	10	10
6	T6		Parking Shading	Parking Shading	10	10	10	10	10	10	10	10
7	T7		Date Palm	Date Palm	10	10	10	10	10	10	10	10
8	T8		Artificial Mountain	Artificial Mountain	10	10	10	10	10	10	10	10
9	T9		Water Exhibition	Water Exhibition	10	10	10	10	10	10	10	10
10	T10		Departure Bridge	Departure Bridge	10	10	10	10	10	10	10	10

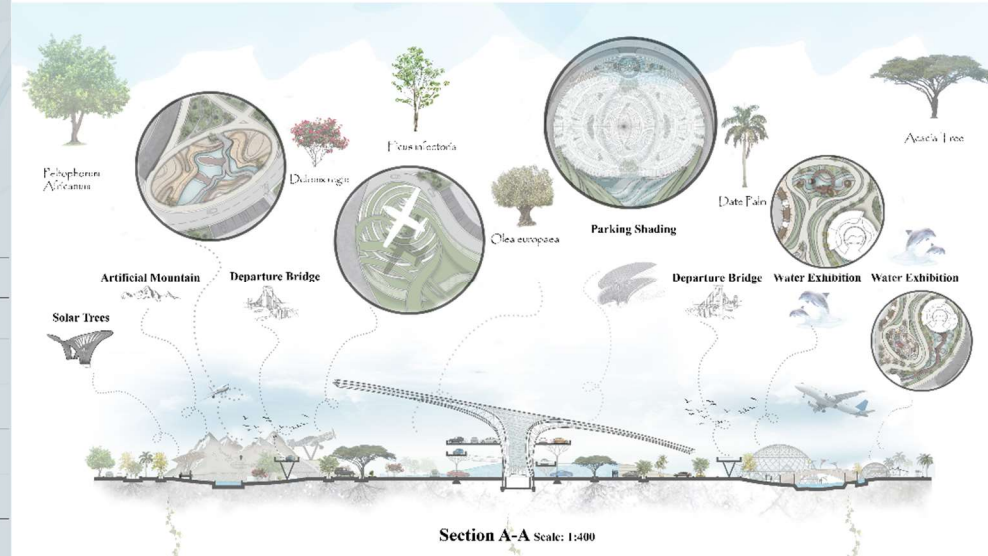
### SHRUBS

NO.	CODE	SYMBOL	COMMON NAME	SCIENTIFIC NAME	HEIGHT (m)	SPREAD (m)	PLANTING RATE	PLANTING DISTANCE (m)	PLANTING DATE	PLANTING METHOD	PLANTING COST (USD)	PLANTING COST (EGP)
1	S1		Acacia Tree	Acacia	10	10	10	10	10	10	10	10
2	S2		Phoenix	Phoenix	10	10	10	10	10	10	10	10
3	S3		Artificial Mountain	Artificial Mountain	10	10	10	10	10	10	10	10
4	S4		Water Exhibition	Water Exhibition	10	10	10	10	10	10	10	10
5	S5		Departure Bridge	Departure Bridge	10	10	10	10	10	10	10	10
6	S6		Parking Shading	Parking Shading	10	10	10	10	10	10	10	10
7	S7		Date Palm	Date Palm	10	10	10	10	10	10	10	10
8	S8		Artificial Mountain	Artificial Mountain	10	10	10	10	10	10	10	10
9	S9		Water Exhibition	Water Exhibition	10	10	10	10	10	10	10	10
10	S10		Departure Bridge	Departure Bridge	10	10	10	10	10	10	10	10

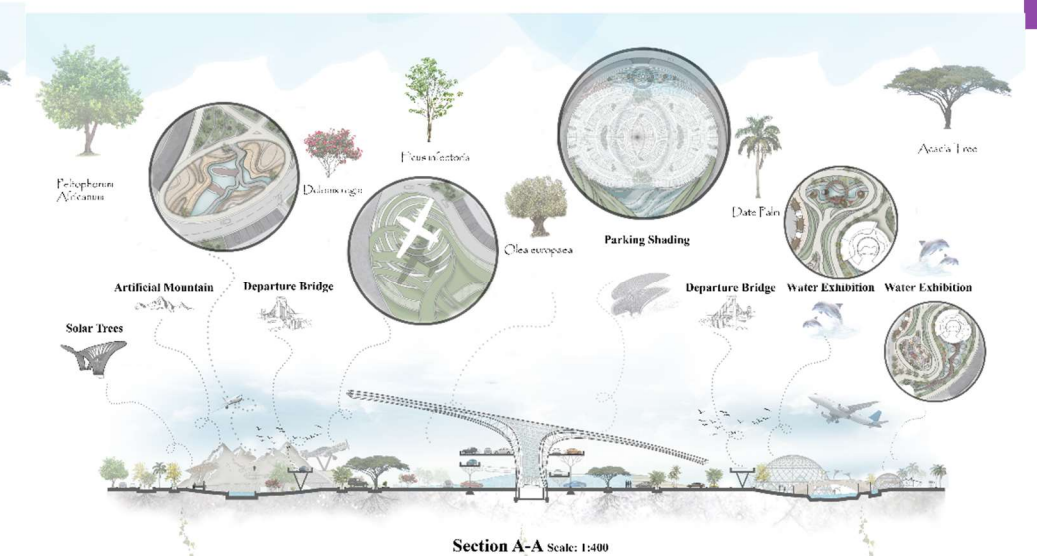
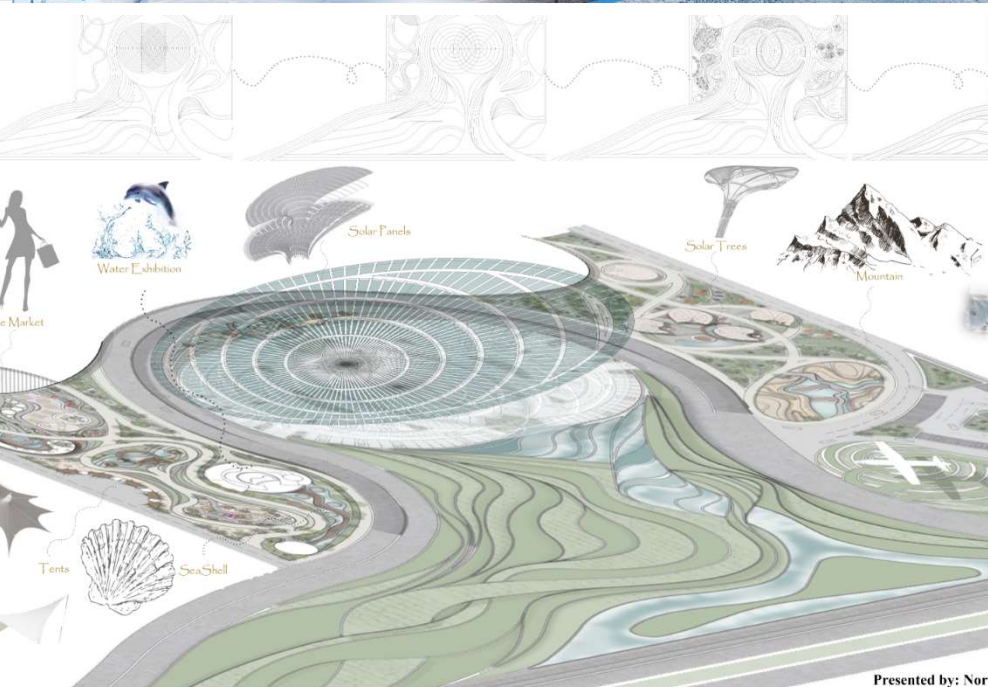
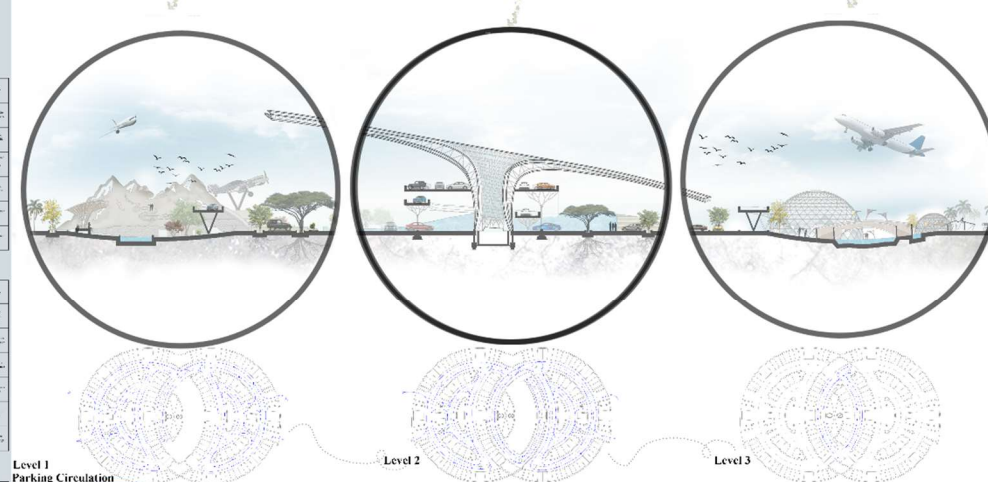
### GROUND COVERS

NO.	CODE	SYMBOL	COMMON NAME	SCIENTIFIC NAME	HEIGHT (m)	SPREAD (m)	PLANTING RATE	PLANTING DISTANCE (m)	PLANTING DATE	PLANTING METHOD	PLANTING COST (USD)	PLANTING COST (EGP)
1	G1		Acacia Tree	Acacia	10	10	10	10	10	10	10	10
2	G2		Phoenix	Phoenix	10	10	10	10	10	10	10	10
3	G3		Artificial Mountain	Artificial Mountain	10	10	10	10	10	10	10	10
4	G4		Water Exhibition	Water Exhibition	10	10	10	10	10	10	10	10
5	G5		Departure Bridge	Departure Bridge	10	10	10	10	10	10	10	10
6	G6		Parking Shading	Parking Shading	10	10	10	10	10	10	10	10
7	G7		Date Palm	Date Palm	10	10	10	10	10	10	10	10
8	G8		Artificial Mountain	Artificial Mountain	10	10	10	10	10	10	10	10
9	G9		Water Exhibition	Water Exhibition	10	10	10	10	10	10	10	10
10	G10		Departure Bridge	Departure Bridge	10	10	10	10	10	10	10	10

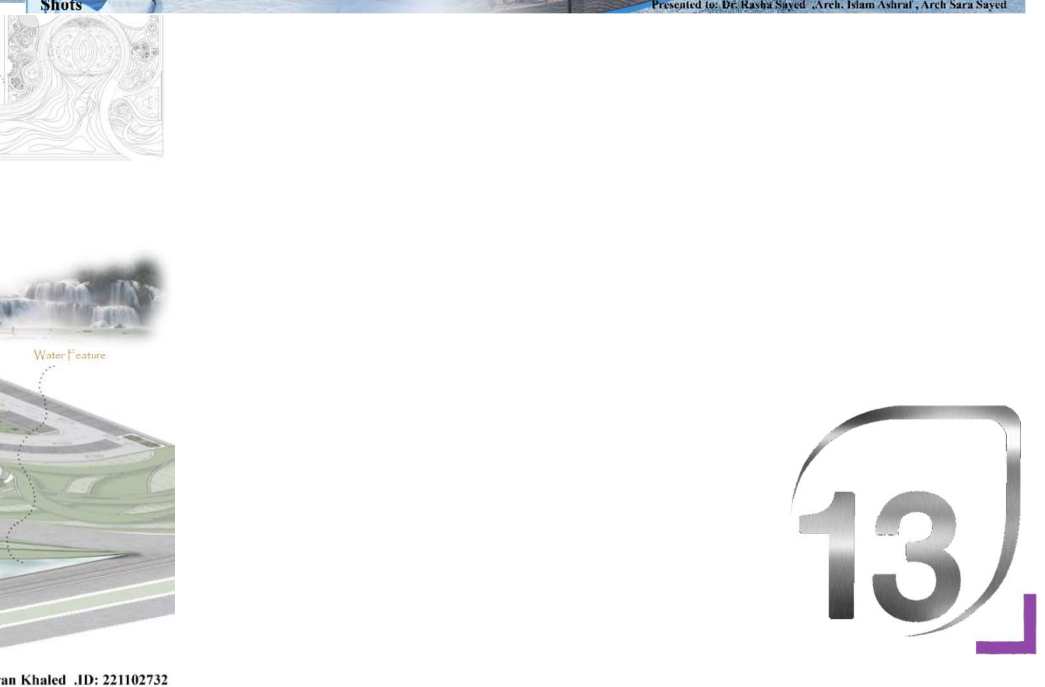
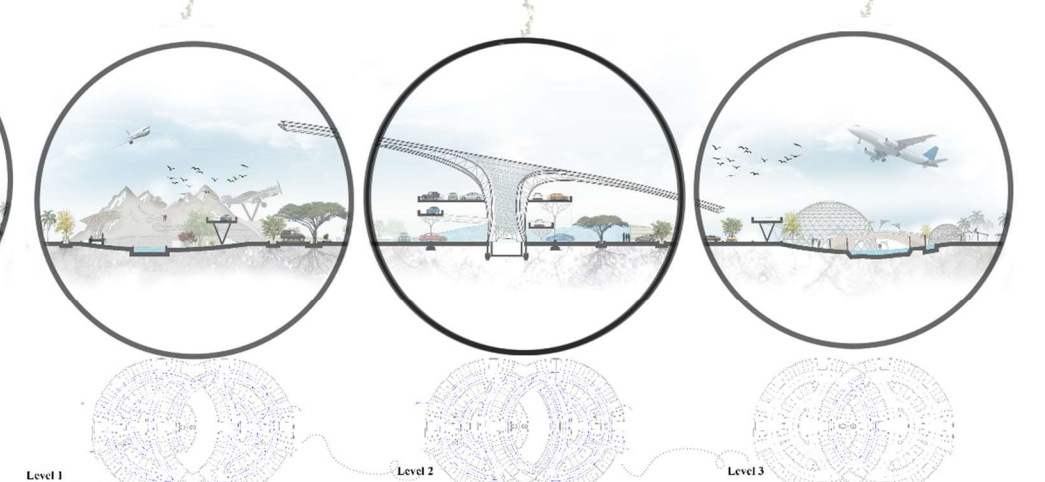
## Plantation Table



Section A-A Scale: 1:400



Section A-A Scale: 1:400







Country/City Egypt/ Sharm El-Sheikh

University/School King Salman International University / Faculty of Architecture

Academic year 2024 - 2025

Title of the project Sharm El-Sheikh Marine Port Offshore Development

Authors Rowes Romany



Title of the project ..... Sharm El-Sheikh Marine Port Offshore Development  
Authors ..... Rowes Romany  
Title of the course ..... Landscape Design Studio  
Academic year ..... 2024- 2025  
Teaching Staff ..... Dr/ Rasha Sayed – L.A Sara Sayed – T.A Islam Ashraf  
Department / Section / Program of belonging ..... Architecture Program  
University / School ..... King Salman International University/ Faculty of Architecture



Written statement, short description of the project in English, no more than 250 words

The project focuses on expanding Sharm El Sheikh Port to strengthen its role as a key gateway for maritime tourism. This development includes a new passenger terminal, a hotel, restaurants, a theater, and various recreational areas. The primary goal is to create a unique and welcoming experience for visitors arriving in Sharm El Sheikh by sea and cruise ships, blending functional and leisure elements for comfort and entertainment. The design prioritizes harmony among the different components, ensuring smooth movement and visual continuity throughout the site. A standout feature is the incorporation of modern shaded areas in the open spaces, thoughtfully designed to address the hot and sunny climate of Sharm El Sheikh. This enhances thermal comfort for visitors and encourages longer stays outdoors.

The overall layout and architectural style aim to provide a memorable first impression of the city. Guests arriving by sea will be welcomed into a vibrant, organized, and visually appealing environment that reflects the city's spirit. The integration of service and cultural elements, such as restaurants and recreational spaces, enriches the overall experience. By offering comfort, shade, and leisure within a cohesive design, the project not only enhances the port's functionality but also deepens the emotional and cultural connection between visitors and the city.

Barcelona International Landscape Biennial

Contact via email:  
biennaladm@coac.net

Venue:  
COAC - Col·legi Oficial d'Arquitectes de Catalunya  
Carrer Arcs 1-3, 08002 Barcelona - Spain



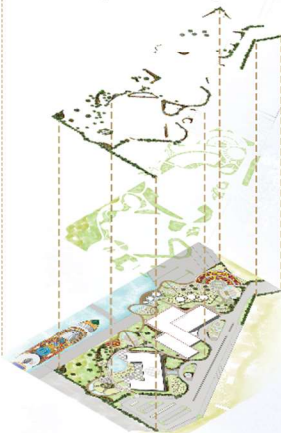
Number	Material	Type	Dimensions	Thickness	Color
01	Stone	granite	0.6*0.6	2cm	light gray
02	Stone	Desert Sandstone	irregular	4cm	beige
03	Stone	Marble	2*0.4	2cm	brown
04	Stone	granite	2*0.4	2cm	gray
05	wood	larch stick	0.2*1.2	1.5cm	Dark Brown
06	Tiles	mosaic	0.4*0.4	2cm	brown
07	Stone	granite	0.6*1.2	2cm	gray
08	Tiles	porcelain	0.6*0.6	1.2cm	gray
09	Stone	granite	2*0.4	2cm	light gray
10	Stone	Basalt	0.15*0.15	2cm	gray
11	Stone	granite	0.4*0.4	2cm	gray
12	Stone	granite	0.3*0.3	2cm	light gray



Hardscape Table



Hardscape Masterplan Scale: 1:400



Trees used in the project	Photo	Indication in plan	Botanical Name	Common Name	Height	Spread	Evergreen?	Flowering months	Adaptation to hot and climate	Amount
1			Prosopis juliflora	Garhi tree	8-12	8-10	Evergreen	Jan-Feb	Threats to hot and climate: drought resistant, deep roots	38
2			Acacia	Acacia	3-23	0-12	Semi-deciduous	Mar-Jun	Threats to hot and climate: drought resistant, deep roots	23
3			UNIVERSITY	University	15-18	5-10	Deciduous	Jan-Mar	Threats to hot and climate: drought resistant, deep roots	11
4			DATE PALM	DATE PALM	5-10	0-10	Evergreen	Jan-Mar	Threats to hot and climate: drought resistant, deep roots	53

Shrubs used in the project	Photo	Indication in plan	Botanical Name	Common Name	Height	Spread	Evergreen?	Flowering months	Adaptation to hot and climate	Amount
1			Neem	Neem	2-4m	3-4m	Evergreen	May-Oct	Threats to hot and climate: drought resistant, deep roots	53
2			Acacia	Acacia	1-2m	2-4m	Evergreen	Jan-Mar	Threats to hot and climate: drought resistant, deep roots	93
3			Acacia	Acacia	1-2m	1-2m	Evergreen	Jan-Mar	Threats to hot and climate: drought resistant, deep roots	107
4			Acacia	Acacia	1-2m	1-2m	Evergreen	Jan-Mar	Threats to hot and climate: drought resistant, deep roots	149
5			Acacia	Acacia	1-2m	1-2m	Evergreen	Jan-Mar	Threats to hot and climate: drought resistant, deep roots	176

Ground cover used in the project	Photo	Indication in plan	Botanical Name	Common Name	Height	Spread	Evergreen?	Flowering months	Adaptation to hot and climate	Amount
1			Portulaca oleraceae	Portulaca	10-20	3-5	Evergreen	Mar-Jun	Threats to hot and climate: drought resistant, deep roots	53
2			Portulaca oleraceae	Portulaca	10-20	3-5	Evergreen	Mar-Jun	Threats to hot and climate: drought resistant, deep roots	53

Plants used in the project	Photo	Indication in plan	Botanical Name	Common Name	Height	Spread	Evergreen?	Flowering months	Adaptation to hot and climate	Amount
1			Portulaca oleraceae	Portulaca	10-20	3-5	Evergreen	Mar-Jun	Threats to hot and climate: drought resistant, deep roots	53
2			Portulaca oleraceae	Portulaca	10-20	3-5	Evergreen	Mar-Jun	Threats to hot and climate: drought resistant, deep roots	53

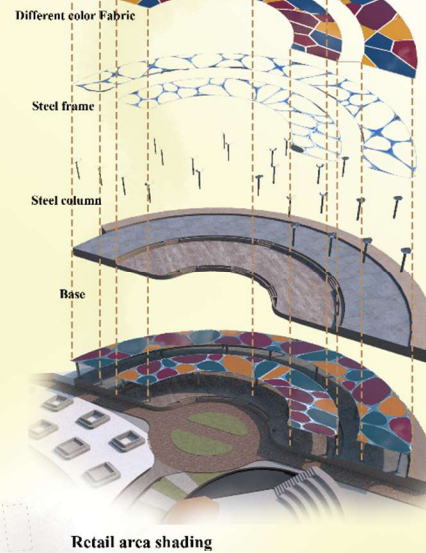
Plantation Table

## Sharm El Sheikh Port

### SHARM EL SHEIKH - SOUTH OF SAINAI - EGYPT

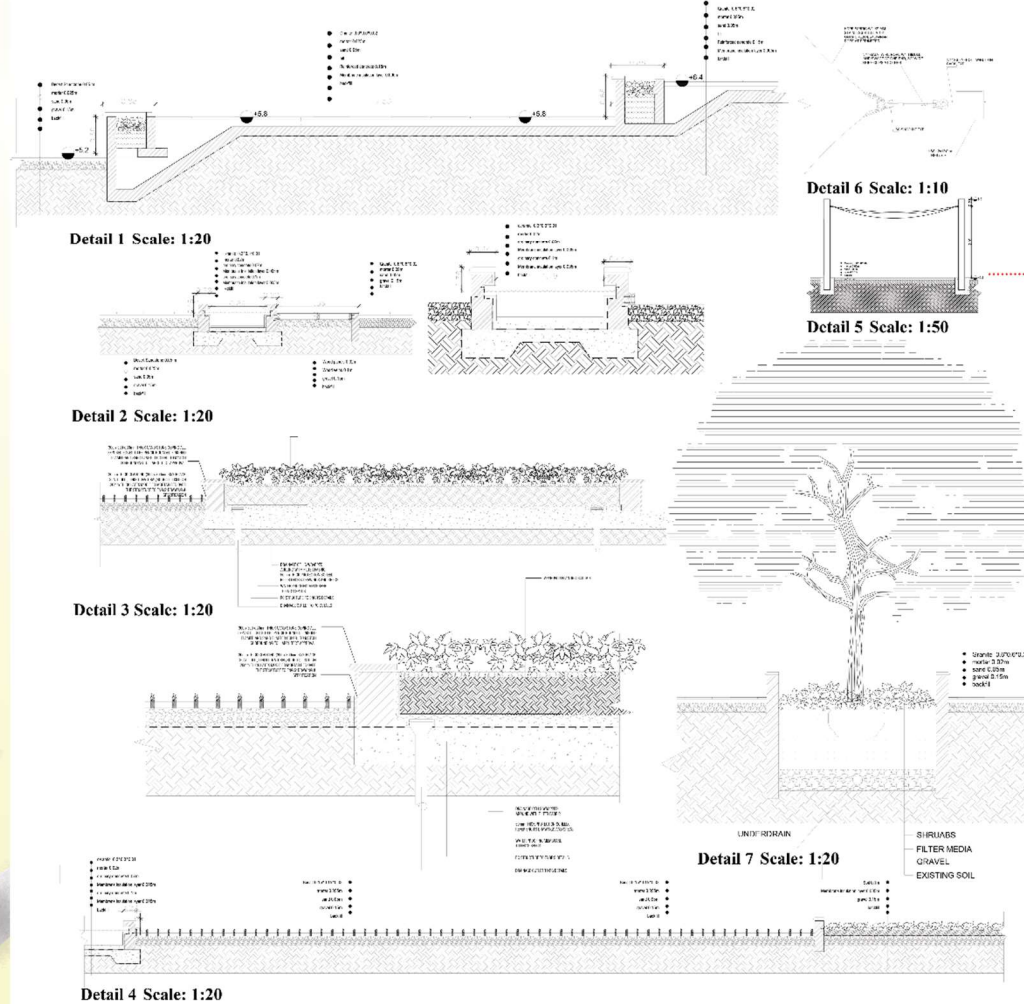


## Shading structure analysis



Retail area shading

Softscape Masterplan scale: 1:400



Construction details



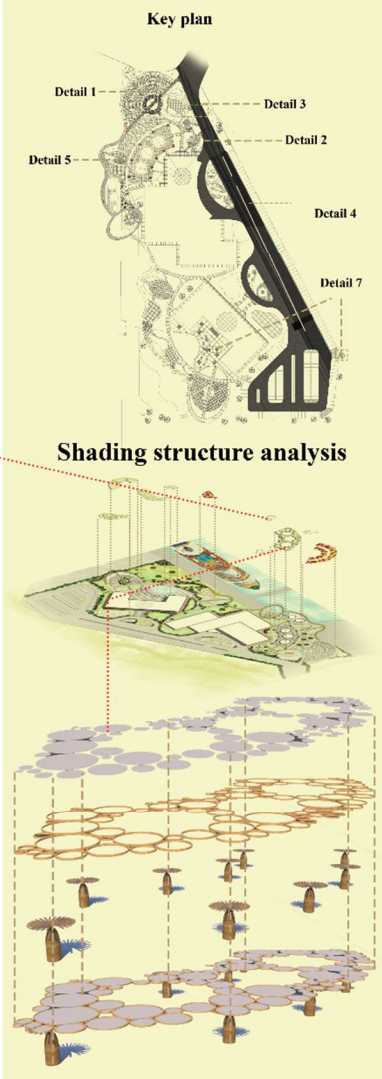
Section A-A Scale: 1:300



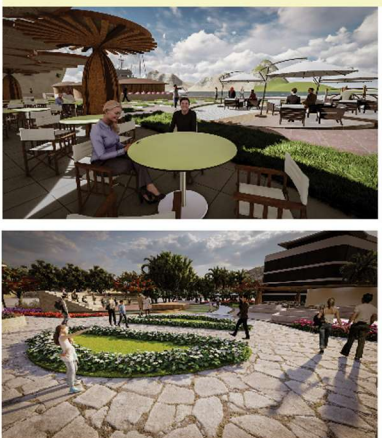
Shots



Presented to: Dr. Rasha Sayed  
Arch. Sara Sayed  
Arch. Islam Ashraf

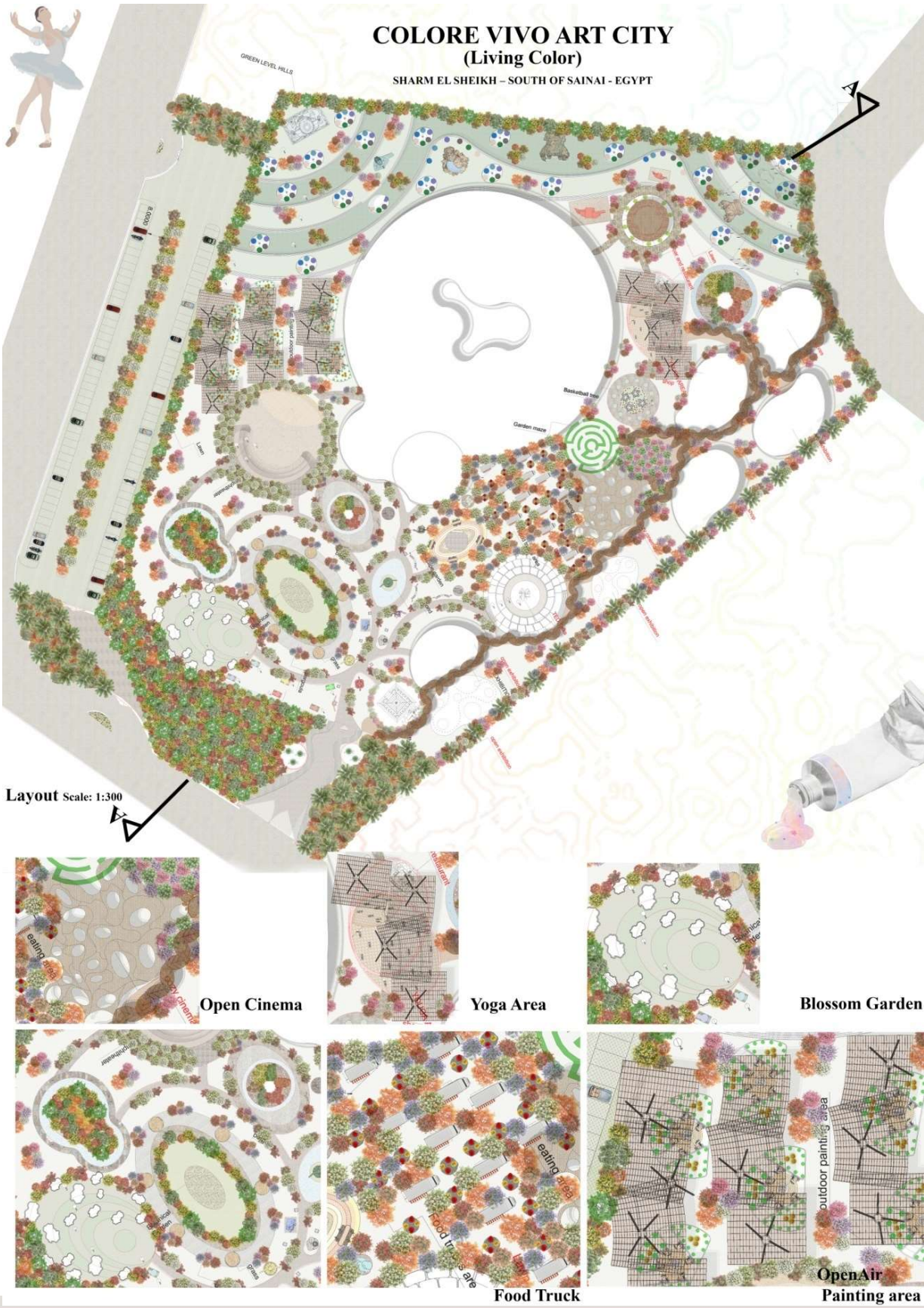
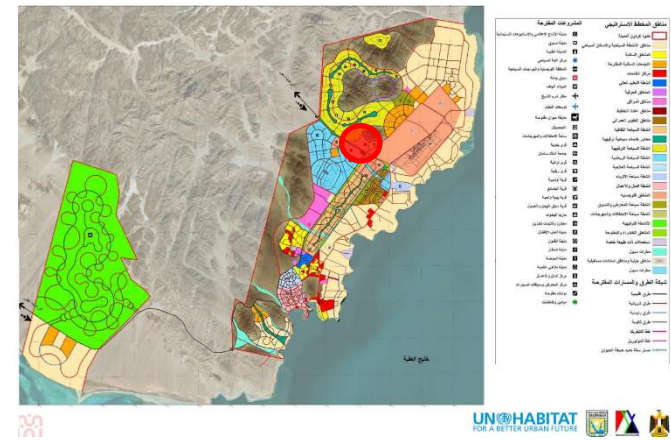


Shading structure analysis





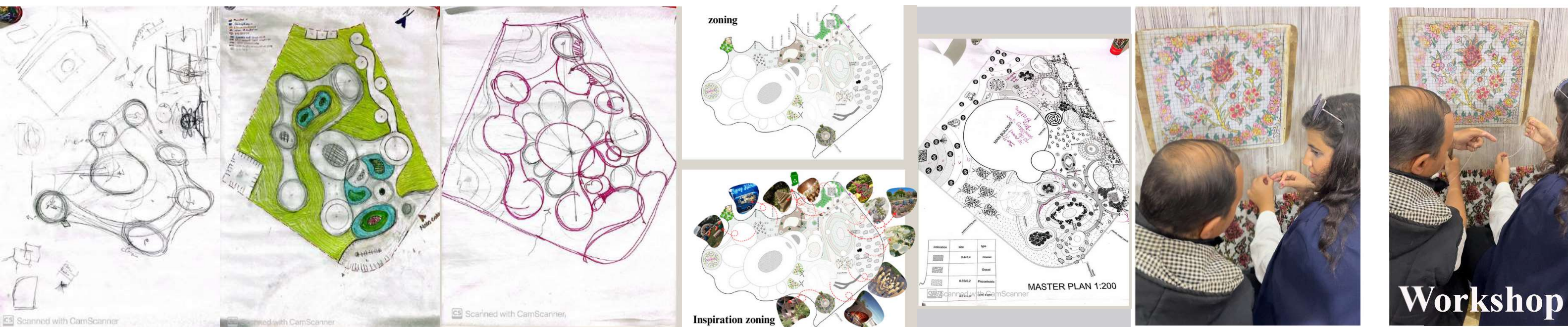
PROJECT LOCATION ON THE STRATEGIC PLAN  
FOR DEVELOPMENT 2030  
SHARM EL-SHIEKH  
EGYPT



Country/City Egypt/ Sharm El-Sheikh  
University/School King Salman International University / Faculty of Architecture  
Academic year 2024 - 2025  
Title of the project Art Garden  
Authors Youmna Adel



Title of the project	Art Garden
Authors	Younna Adel
Title of the course	Landscape Design Studio
Academic year	2024- 2025
Teaching Staff	Dr/ Rasha Sayed – L.A Sara Sayed – T.A Islam Ashraf
Department / Section / Program of belonging	Architecture Program
University / School	King Salman International University/ Faculty of Architecture



Written statement, short description of the project in English, no more than 250 words

The project envisions an Arts City that celebrates creativity, nature, and well-being, with outdoor spaces playing a central role in fostering artistic expression and providing unique experiences for visitors and residents. The design features open-air areas dedicated to painting and drawing, allowing artists to immerse themselves in their natural surroundings. Thoughtfully placed botanical gardens and quiet zones offer peaceful retreats for reading and relaxation, promoting a calm and inspiring atmosphere. Additionally, designated spaces for yoga and meditation enhance physical and mental wellness, while an outdoor theater serves as a venue for performances and cultural events, enriching the community's artistic life. Various service areas are integrated into the layout to meet daily needs and ensure a comfortable experience for users.

The overall design is characterized by smooth, flowing lines that reflect harmony with the natural landscape. This use of organic forms symbolizes flexibility, freedom, and the fluid nature of creativity. The gentle curves and soft transitions between different zones encourage movement and exploration, seamlessly blending into the site. By combining artistic, recreational, and wellness functions, the project offers more than just a built environment; it becomes a vibrant space for creativity, reflection, and community. The Arts City stands as a model for integrating design, nature, and culture into a unified and inspiring experience.

Barcelona International Landscape Biennial

Contact via email:  
biennaladm@coac.net

Venue:  
COAC - Col·legi Oficial d'Arquitectes de Catalunya  
Carrer Arcs 1-3, 08002 Barcelona - Spain

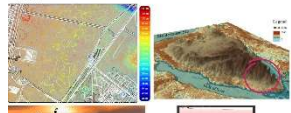




Location



Soil



Topography



Strategic plan



Entrances



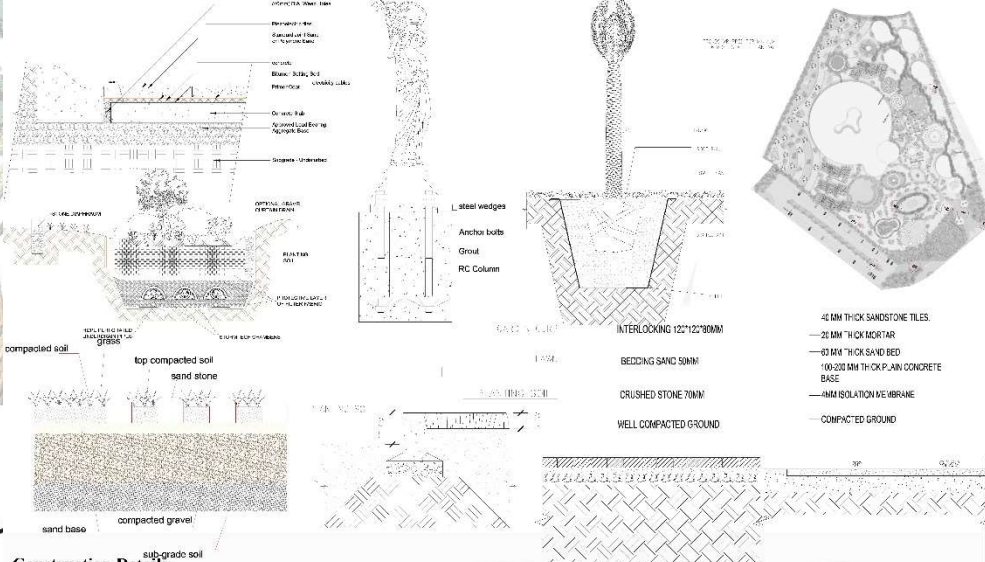
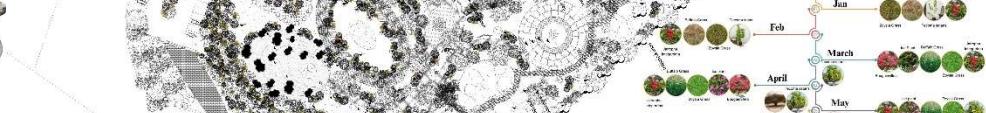
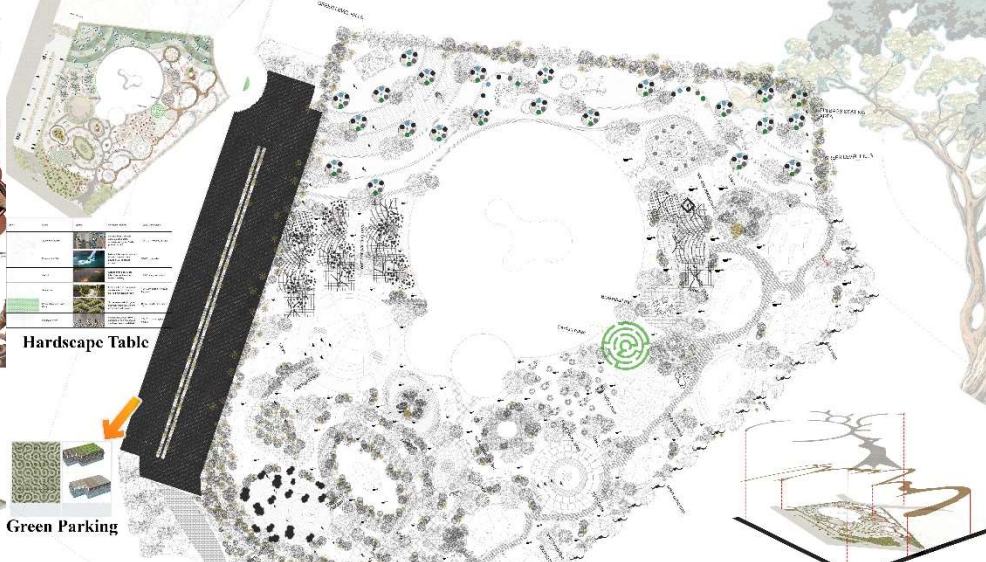
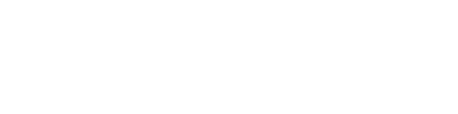
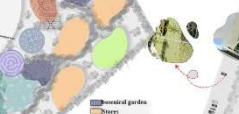
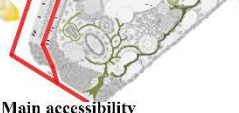
circulation



Sold & Void



Neighborhood

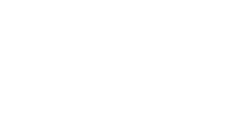
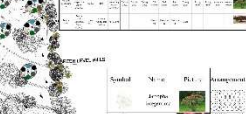


Hardscape Masterplan Scale: 1:500

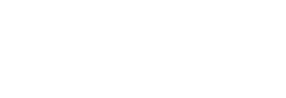


Softscape Masterplan Scale: 1:500

shadings



Construction Details



Section A-A Scale: 1:300



Shots



Key-plan shot

