

Please provide a 250-word text explaining the selection criteria used to choose the five projects representing the school in the Ribas Piera Prize. Detail the aspects evaluated, such as conceptual quality, innovation, thematic relevance, technical resolution, or any other criteria considered in the selection process with a single image, characteristic of the academic process, to accompany the text.

For the Piera Ribas Prize, the Dept. of Landscape Architecture at the Faculty of Architecture, CTU in Prague, selected student projects that reflect the breadth and diversity of our design studios. The chosen works represent a cross-section of our teaching approaches, covering a wide range of themes, scales, and methodologies. The primary criteria for selection included the quality of execution within the specific framework of each studio's assignment, the academic year of the student (to ensure appropriate expectations and comparison), and the strength of the project's conceptual foundation. We aimed to highlight not only technically and visually well-developed proposals but also those that go beyond the given brief – projects that explore broader themes, offer new perspectives, or propose unexpected solutions. This element of intellectual ambition and the ability to transcend conventional boundaries played an essential role in our decision-making. We also considered the representativeness of the topics, looking for assignments that engage with contemporary issues in landscape architecture – whether environmental, social, or spatial. Projects selected often demonstrate a strong narrative or a critical stance, underpinned by clear reasoning and spatial thinking. Naturally, graphic quality was a fundamental requirement. Visual clarity, coherence, and the ability to communicate the project's ideas effectively were essential aspects of our evaluation process. Altogether, the selection aims to present a compelling and inspiring picture of current student work at our institute, showcasing both academic rigour and creative vision.





Country/City
University / School
Academic year
Title of the project
Authors

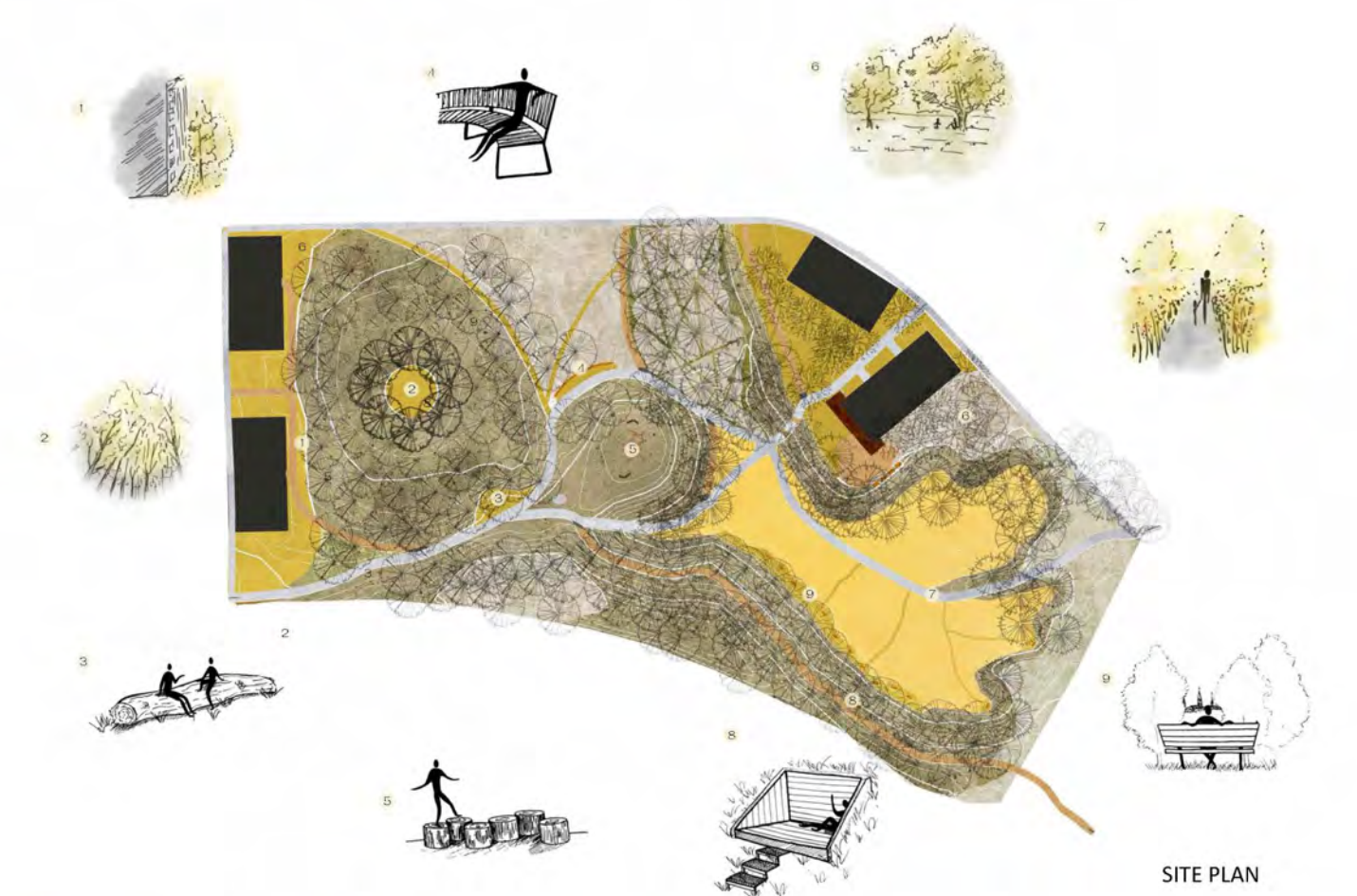
Czech Republic
Department of Landscape Architecture, Czech Technical University, Faculty of Architecture, Prague
2024-25
HRANÁ / THE EDGE
Anna Vítková, Zuzana Sobotíková, Zuzana Píšová

| | |
|---|---|
| Title of the project | HRANÁ / THE EDGE |
| Authors | Anna Vítková, Zuzana Sobotíková, Zuzana Píšová |
| Title of the course | Basics of Landscape Design (2 semester bachelor) |
| Academic year | 2024-25 |
| Teaching Staff | Hana Špalková, Tereza Havráňková, Petr Stojaník |
| Department / Section / Program of belonging | Department of Landscape Architecture |
| University / School | Czech Technical University, Faculty of Architecture, Prague |



Written statement, short description of the project in English, no more than 250 words

Large part of the brownfield area are a blind spot in the mental map of the residents of Kladno. Since their abandonment, they have often turned into untouched areas that nature has begun to reclaim. With the modernization of the Prague-Kladno railway line, the pressure to transform these places increase. One such area is the dump of the former Engerth mine on the border of the Kladno urban area. Just a year ago, this dump was completely cut off from the surroundings by the railway and the heating pipe. The studio work has its focus in the group concept of the area rebuild. This is complemented by individual students who designed selected sites of the area. The design respects the history of the dump and recalls it through detailed elements. It connects the city with nature, and by leaving successional areas, it continues with the nearby forest. A concrete path leads through the space, in which a sharp edge, a crease, winds, which is one of the main elements of the entire design. The motif of the edge is key in the concept and refers to the history of the area. The design is not just a journey through the landscape... it is a challenge to discover, to play, to slow down and to reflect. A place where the rawness of the industrial past meets the return of nature and where everyone, young or old, can find their own adventure.



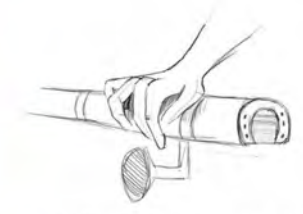
SITE PLAN



crack - water seepage
+ symbol of mining activity



the object symbolizes the end of mining
in the local mine => sealed mine.



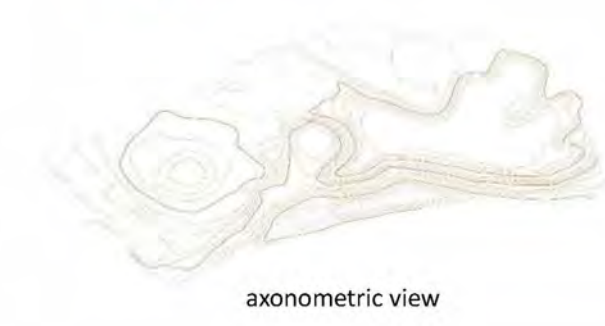
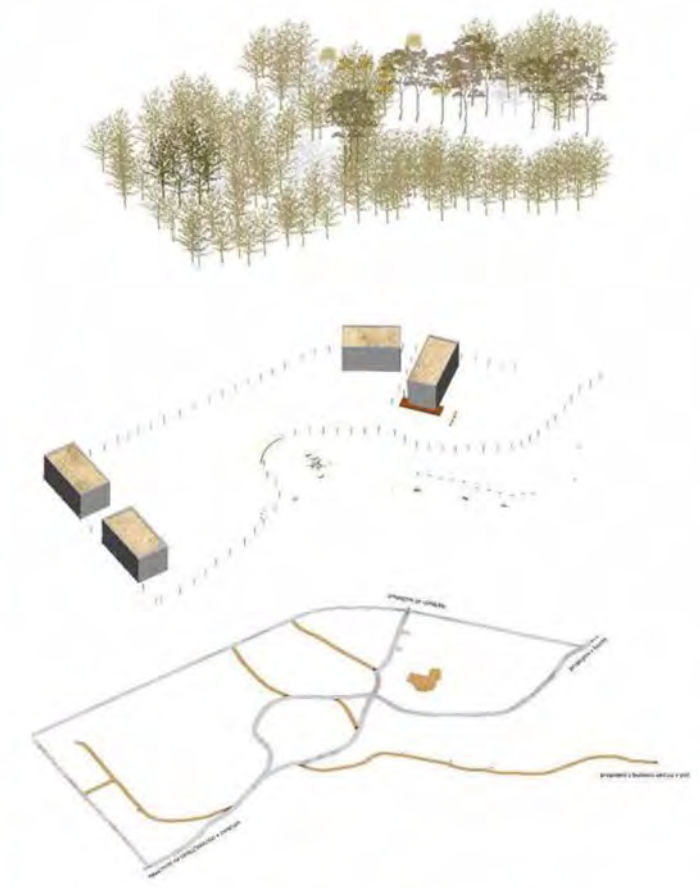
the railing refers to the work
of mining horses



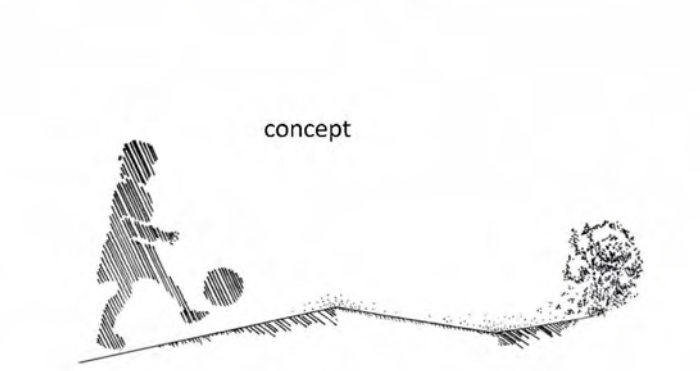
bead on steel wire
- railing detail



LOGO/ LABEL

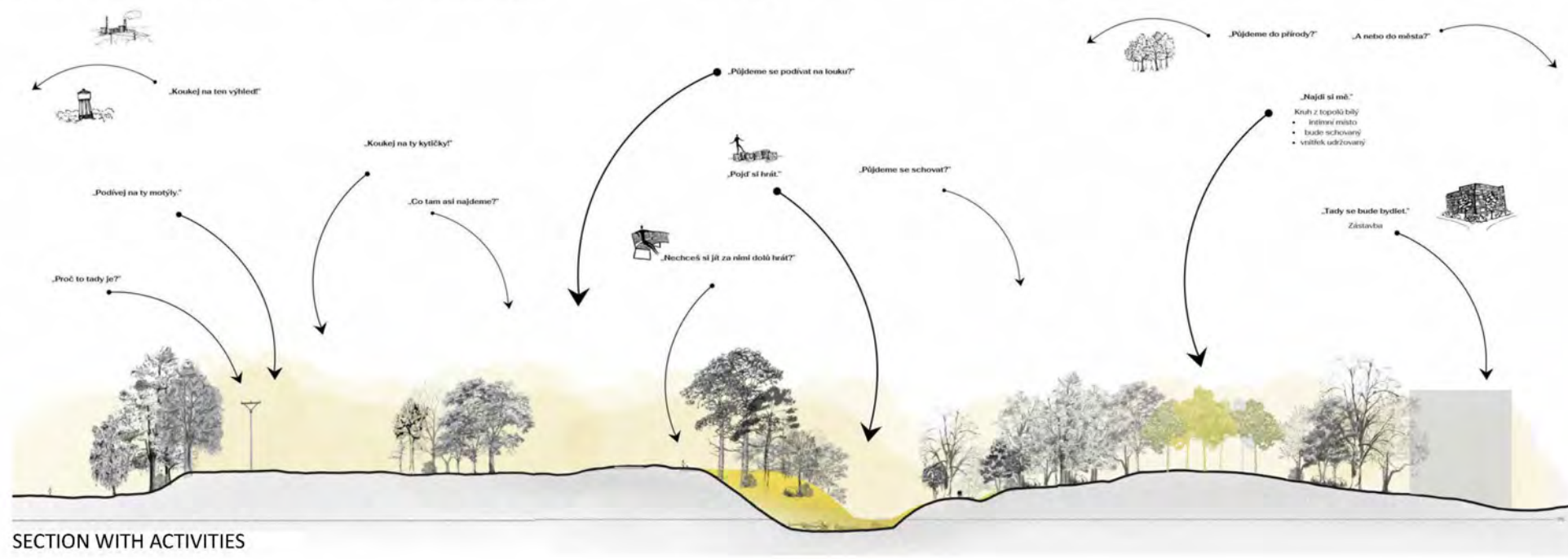


axonometric view

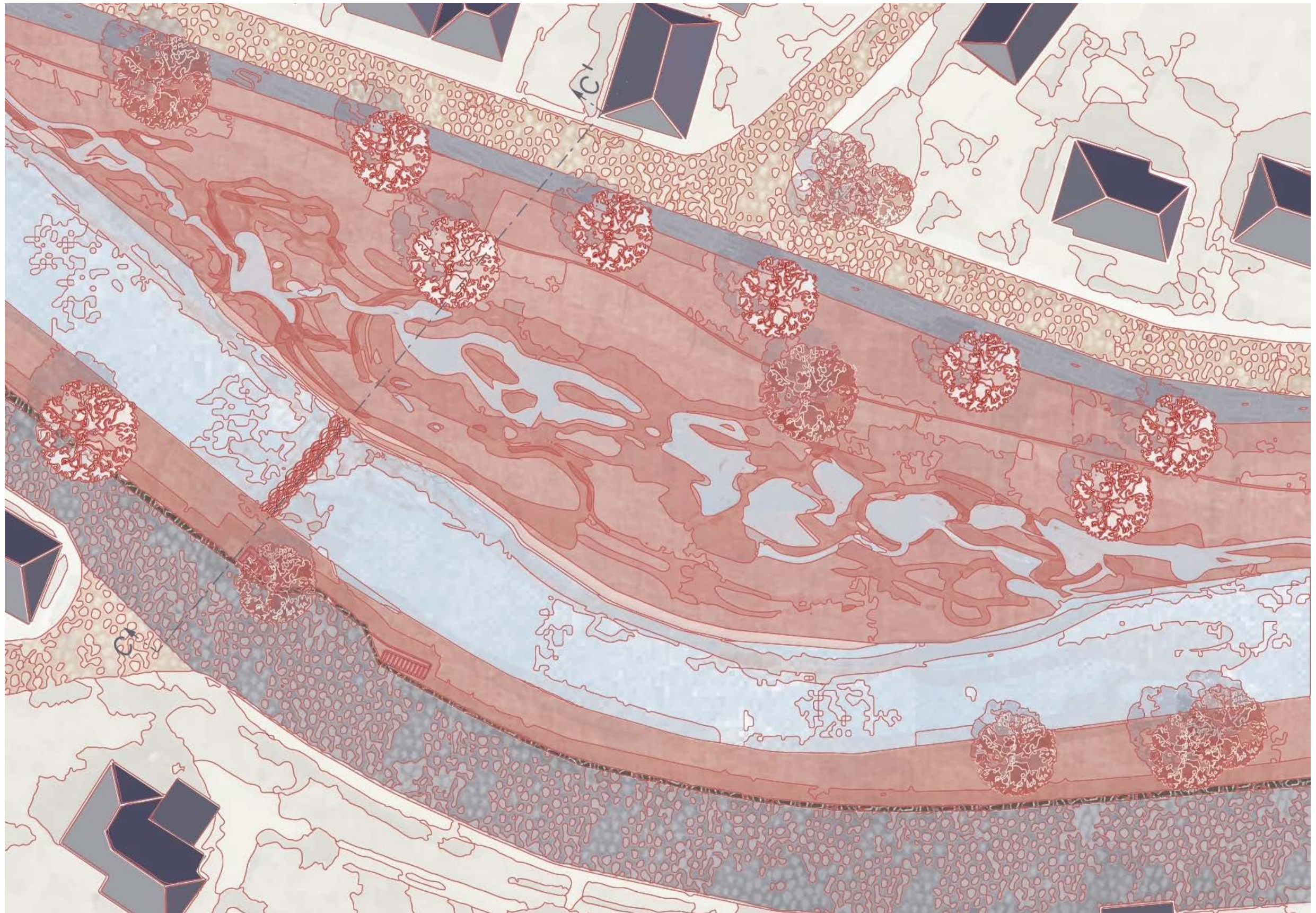


concept

playfulness the edge wilderness



SECTION WITH ACTIVITIES



Country/City
University / School
Academic year
Title of the project
Authors

Czech Republic
Department of Landscape Architecture, Czech Technical University, Faculty of Architecture, Prague
2024-25
GET IN TOUCH WITH THE RIVER
Miichela Brabcová

| | |
|---|---|
| Title of the project | GET IN TOUCH WITH THE RIVER |
| Authors | Michaela Brabcová |
| Title of the course | Landscape Architecture Studio (2nd year Bachelor) |
| Academic year | 2024-25 |
| Teaching Staff | Till Rehwaldt, Klára Concepcion |
| Department / Section / Program of belonging | Department of Landscape Architecture |
| University / School | Czech Technical University, Faculty of Architecture, Prague |



Written statement, short description of the project in English, no more than 250 words

The aim of the semester project was an urban intervention connecting two parts of the city through the redesign of public space — a proposal for a riverside area, responding to the surrounding (largely damaged) urban fabric, incorporating new public functions, and addressing the role of water in the landscape, including its urban dimension. Part of the assignment included participation in an international workshop, where students explored fundamental approaches to the topic in mixed teams with peers from different disciplines (architecture, landscape architecture, and urbanism) from universities in Dresden and Wrocław. Following the workshop, students continued to work on their individual proposals independently. In her project, the student explores how to connect the two parts of the city in a manner that is both sensitive to the local context and creatively distinct. Disparate fragments and leftover spaces of a city that has historically turned its back on its much-maligned river are now reconnected — by the river itself. Rather than a conventional waterfront promenade, the design envisions a dynamic space shaped by the Biała River, which is finally given the room to act creatively. Beneath this seemingly simple concept lies thoughtful consideration of flood protection and prevention, water retention in the landscape, and the broader handling of surface water. Míša proposes a solution that harnesses the potential of a temporarily re-wilded watercourse, tailored to the local conditions and character of the area. Her design also thoughtfully addresses broader societal issues such as inclusive public space and the optimisation of urban mobility.

Barcelona International Landscape Biennial

Contact via email:
biennialadm@coac.net

Venue:
COAC - Col·legi Oficial d'Arquitectes de Catalunya
Carrer Arcs 1-3, 08002 Barcelona - Spain



MASTER PLAN

My project is divided into four parts, which together form a coherent concept. Two of these sites I am working on in more detail. All sites are connected by a hydrotherapy promenade, which physically and symbolically connects the city centre with the spa area.

HYDROTHERAPY

Hydrotherapy is a therapeutic method that uses the physical properties of water - its temperature, flow and buoyancy - to promote regeneration of the body and mind. Being in the water, touching it or just walking in the water environment helps to calm the nervous system, relax muscles and improve circulation. In my project, hydrotherapy naturally connects with moving around the city - water becomes part of the journey, a place to stop, slow down and consciously return to oneself.

CONNECTION



FRONTIERS



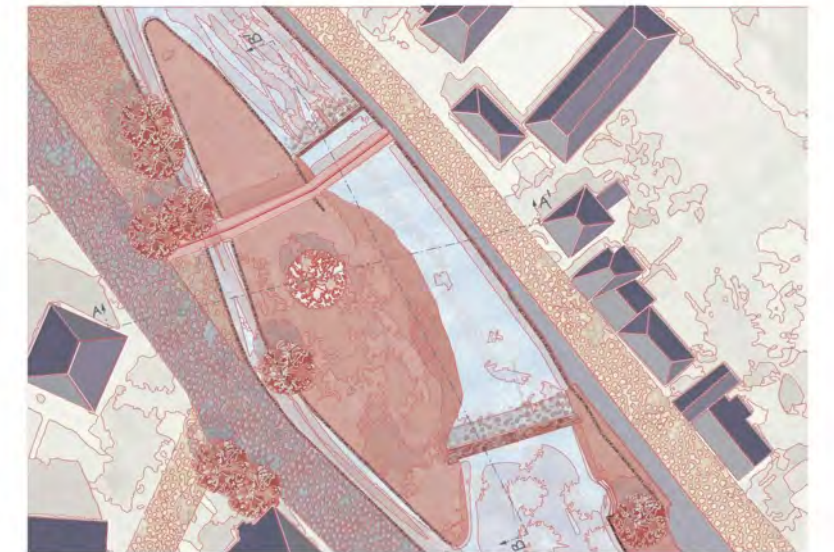
FLOOD PROTECTION



RIVER "TOUCHY" PLACES



The river is an integral part of the city. The river connects but also separates it with its wildness and fragility of flow. But what if we can touch the water? What if we could walk on it, slow down, submerge ourselves and begin the process of healing... What if we could connect the city simply by touching it. What if we could touch the river?



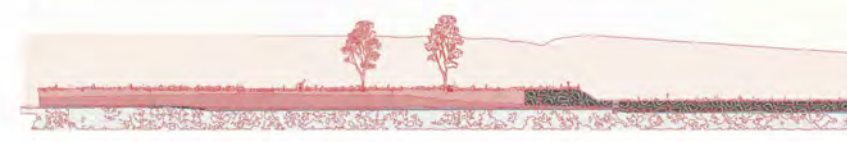
WEIRS FISH PASSES



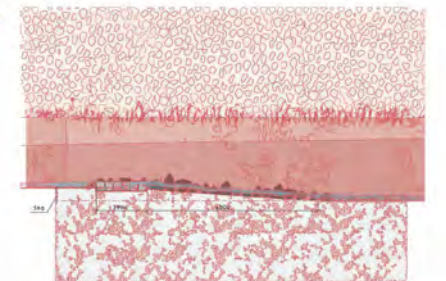
A-A'



B-B'

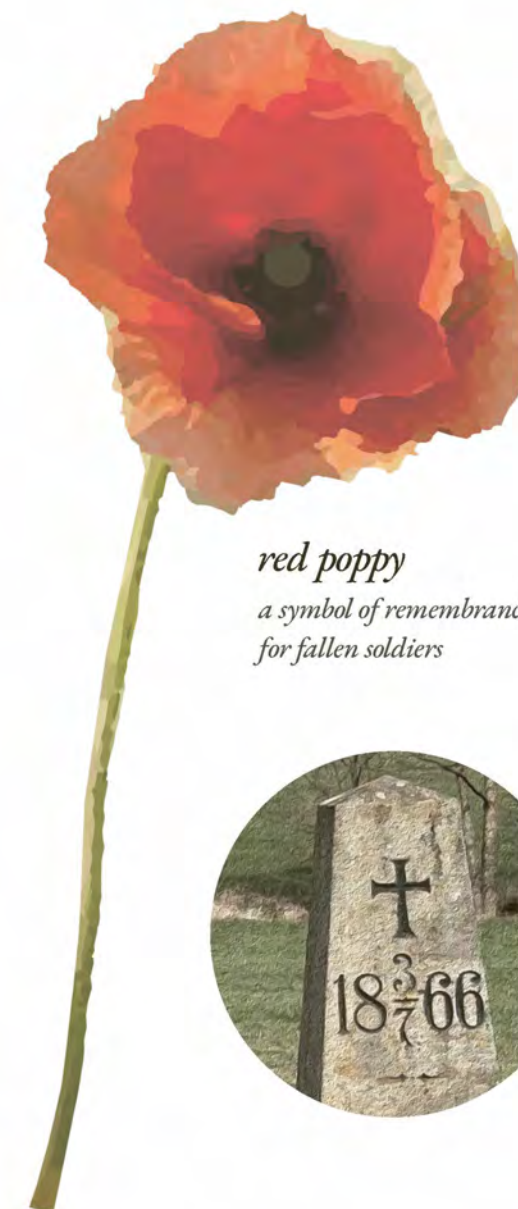


DETAIL IN MY PROJECT





“So great was the bloodshed upon the field of battle that the land bled red for weeks...”



*red poppy
a symbol of remembrance
for fallen soldiers*

Country/City
University / School
Academic year
Title of the project
Authors

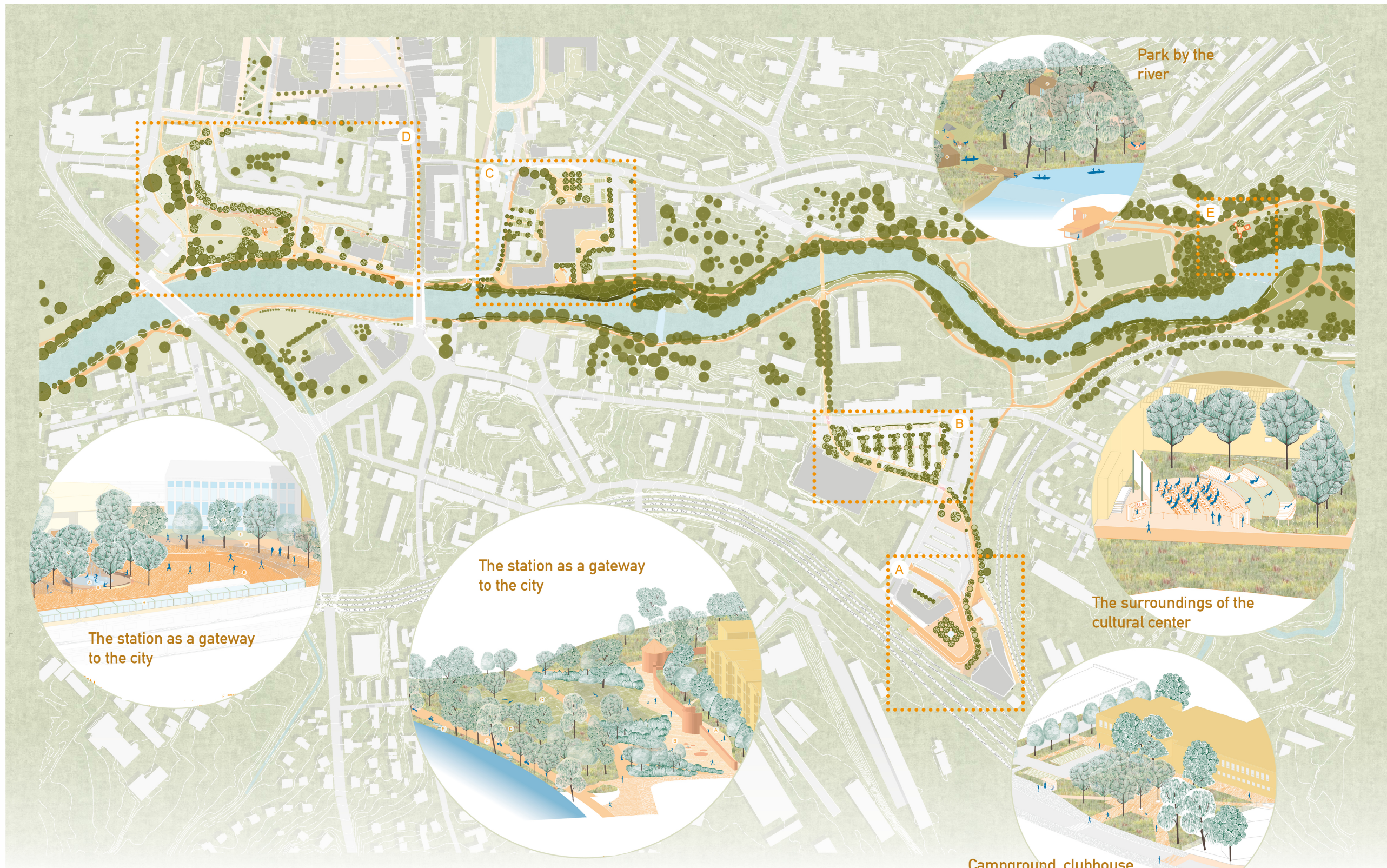
Czech Republic
Department of Landscape Architecture, Czech Technical University, Faculty of Architecture, Prague
2024-25
THE BATTLEFIELD OF KÖNIGGRÄTZ 1866: Conception of Memoryscape of the Core Area of the Landscape Conservation Zone
Anna Homoláčová



| | |
|---|---|
| Title of the project | THE BATTLEFIELD OF KÖNIGGRÄTZ 1866 |
| Authors | Anna Homoláčová |
| Title of the course | Master's Diploma Thesis |
| Academic year | 2024-25 |
| Teaching Staff | Jitka Trevisan, Tomáš Sklenář |
| Department / Section / Program of belonging | Department of Landscape Architecture |
| University / School | Czech Technical University, Faculty of Architecture, Prague |

Written statement, short description of the project in English, no more than 250 words

The diploma project presents a landscape-architectural concept for the core area of the battlefield where the decisive clash of the Austro-Prussian War took place on July 3, 1866, near the fortress city of Königgrätz (Hradec Králové), Czech Republic. This historically charged site is protected as a landscape conservation zone due to its exceptional cultural significance—most notably the dense network of monuments and memorial crosses marking authentic sites of bloodshed. The project operates on two conceptual levels: memoryscape and lifescape. These layers aim to restore the landscape’s narrative and ecological integrity through minimal, respectful interventions. The approach commemorates the thousands of fallen soldiers buried throughout the site while promoting long-term sustainability and education. The design builds upon the historical layers of an organically developed cultural landscape, sensitively reinterpreted in the context of the 21st century. The theme of the battle is interwoven with local agricultural traditions—such as the now-forgotten cultivation of flax and hemp—to create an immersive and emotionally resonant experience of the historic terrain. The battlefield landscape retains archetypal features of the Czech countryside—forests, meadows, fields, and orchards—some named after military commanders who fought in the battle. Native woodlands are bordered by commemorative meadows that, on major battle anniversaries, burst into vivid red poppies, symbolically evoking the memory of those who fought and died in the battle.



Country/City
University / School
Academic year
Title of the project
Authors

Czech Republic
Department of Landscape Architecture, Czech Technical University, Faculty of Architecture, Prague
2024-25
HAVLICKUV BROD – ACUPUNCTURE OF PUBLIC SPACES
Vojtěch Michal

| | |
|---|---|
| Title of the project | HAVLICKUV BROD – ACUPUNCTURE OF PUBLIC SPACES |
| Authors | Vojtěch Michal |
| Title of the course | Master's Diploma Thesis |
| Academic year | 2024-25 |
| Teaching Staff | Vladimír Sitta, Adéla Ruprecht Chmelová |
| Department / Section / Program of belonging | Department of Landscape Architecture |
| University / School | Czech Technical University, Faculty of Architecture, Prague |



Written statement, short description of the project in English, no more than 250 words

At the core of the author's design philosophy is a belief that a mid-sized town like Havlickuv Brod would benefit more from numerous, careful, and modest interventions than from a single big gesture. Michal Vojtech knows his place well. It is a place where he was born and grew up. It is then no wonder that he has a personal attachment to many places that form a rich and variable mosaic. Growing up in one place could taint one's ability to be incisive in suggested changes. Fortunately, the work is free of sentimentality that could impede necessary transformations. Problems and remedies are presented in a very straightforward and accessible form, which makes this work a very valuable contribution for future discussions with the public. This is a project that ought not to gather dust somewhere in the archives. A suggested method, which could be described as tactical urbanism, also allows for staging remedial work according to urgency and priorities. This is an important aspect in times of tight municipal budgets. The work contains a strong message for the inhabitants of the town. Its mission is to fight visual and emotional anaesthesia that unfortunately prevails in the minds of many town citizens.

Barcelona International Landscape Biennial

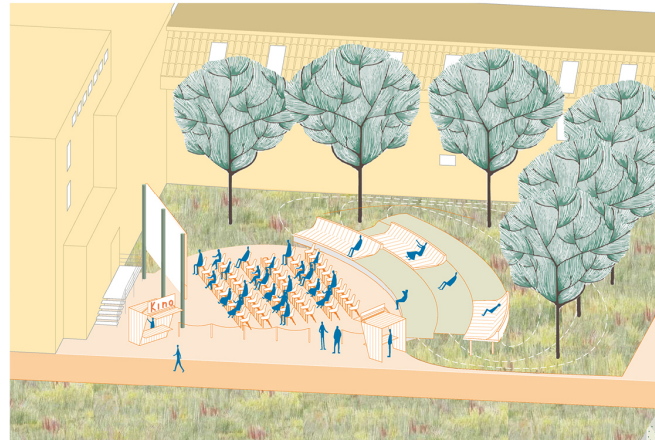
Contact via email:
biennaladm@coac.net

Venue:
COAC - Col·legi Oficial d'Arquitectes de Catalunya
Carrer Arcs 1-3, 08002 Barcelona - Spain

Acupuncture of public spaces:
supporting permeability within the urban environment
promoting community life
enhancing the city's climate resilience
reinforcing the historical spirit of the city



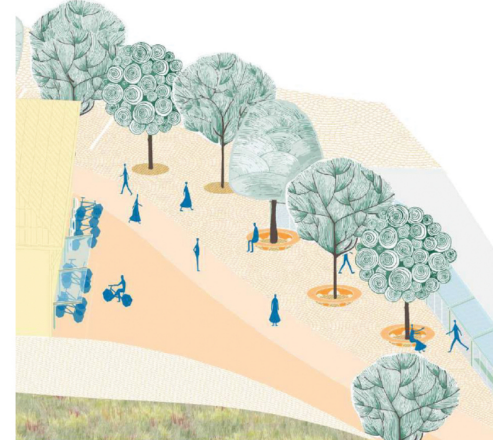
concept



openair movie theater



shared space



parking lot and stand for shared bicycles



reducing parking spaces



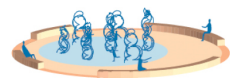
trysky vodního prvků



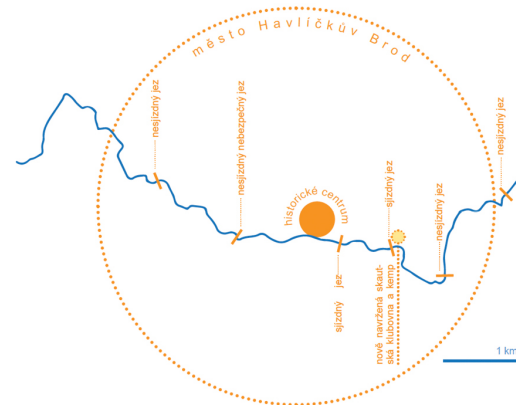
vodní zrcadlo



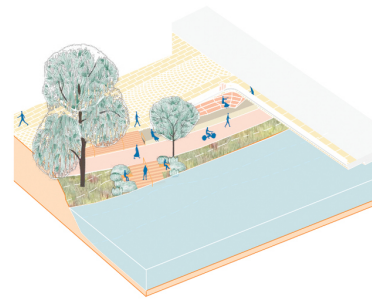
vypnutý vodní prvek



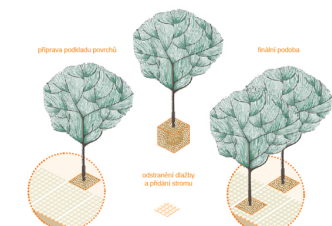
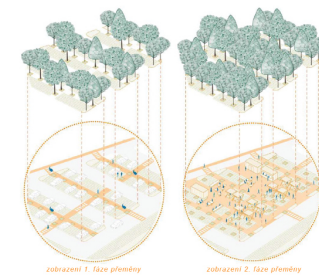
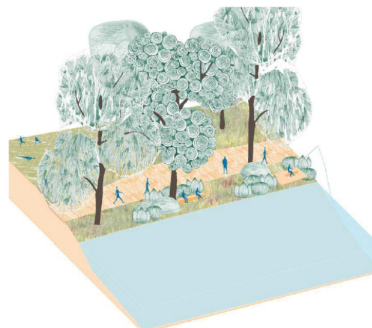
water feature



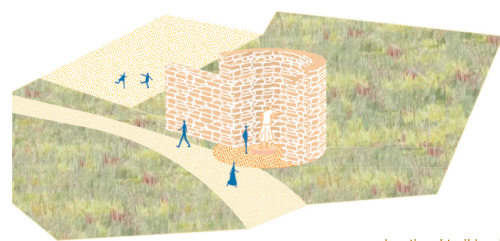
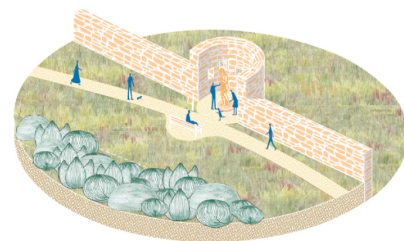
river in the city



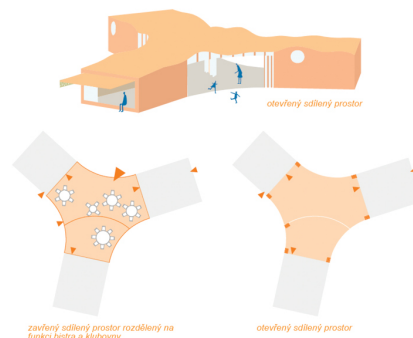
riverfront



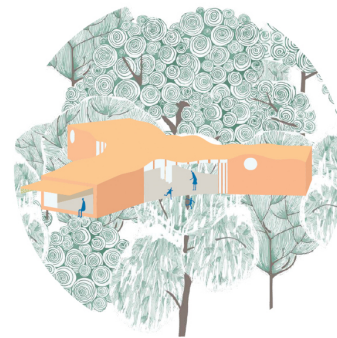
vegetation concept

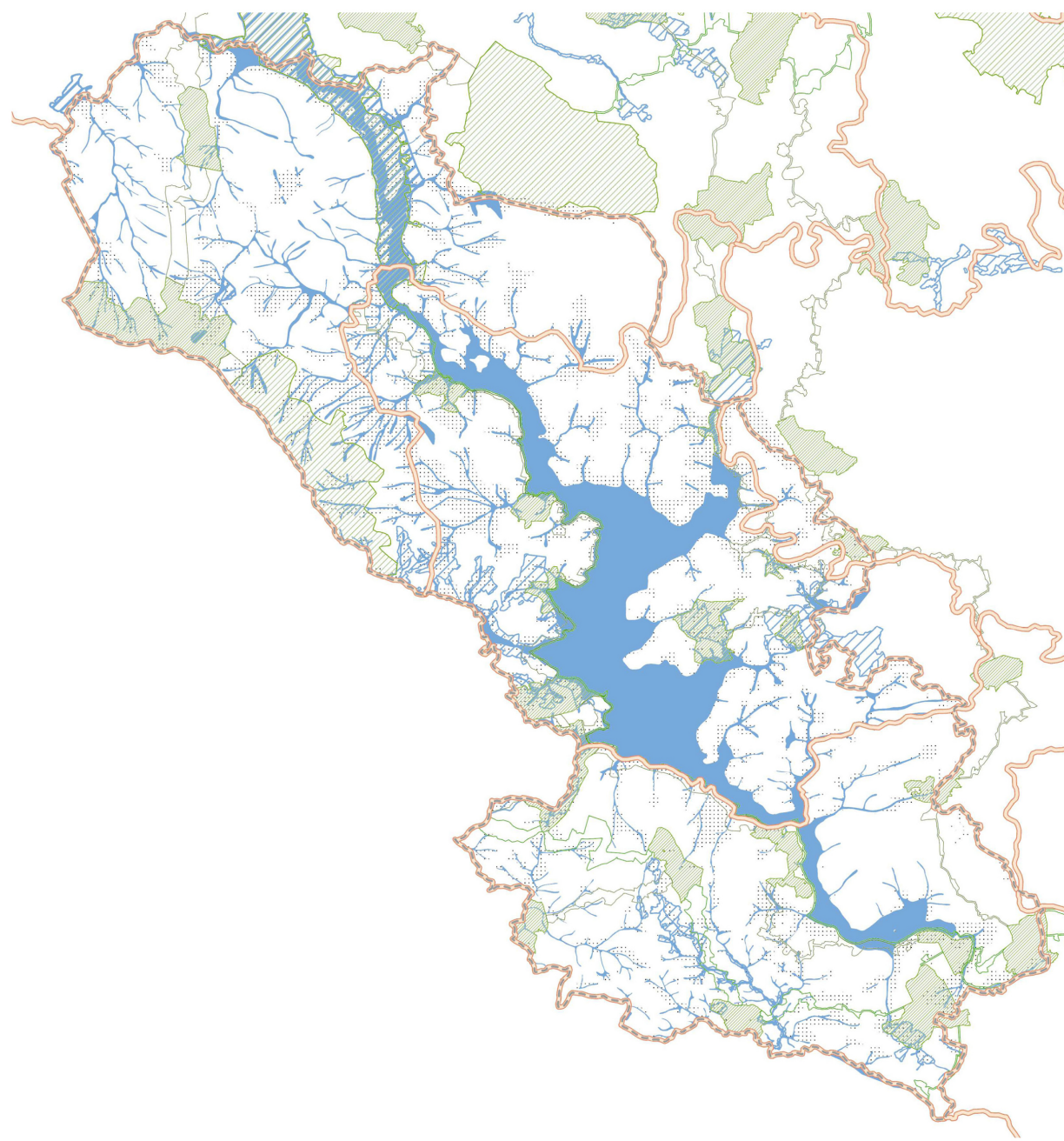


educational trail by city walls



clubhouse, bistro, camping grounds





Country/City
University / School
Academic year
Title of the project
Authors

Czech Republic
Department of Landscape Architecture, Czech Technical University, Faculty of Architecture, Prague
2024-25
LIPNO REGION LANDSCAPE / KRAJINA LIPENSKA
Karolína Molíková, Paola Recmanová

| | |
|---|---|
| Title of the project | LIPNO REGION LANDSCAPE / KRAJINA LIPENSKA |
| Authors | Karolína Molíková, Paola Recmanová |
| Title of the course | Diploma Seminar |
| Academic year | 2024-25 |
| Teaching Staff | Klára Salzmann, Zuzana Bečvářová, Tomáš Pozdech |
| Department / Section / Program of belonging | Department of Landscape Architecture |
| | Czech Technical University, Faculty of Architecture, Prague |
| University / School | |



Written statement, short description of the project in English, no more than 250 words

LÍP-NO is a wordplay that echoes the Czech expression “líp, no...” – a resigned sigh rather than a clear rejection – “better... well, yeah...”. The project critically reflects on the state of landscape planning in the Czech Republic through the eyes of young, idealistic students, well-versed in environmental policy and ready to challenge dysfunctional systems. Unlike many critiques, however, this work presents practical visions for change, applied to a complex case study area. The first part addresses the historical degradation of natural and landscape values—particularly during the communist era—and the current system’s reluctance to restore them. The students call for cooperation on regenerating the landscape as a multifunctional space of public interest. They openly question the legislative and procedural gaps between spatial and landscape planning, and our limited implementation of the European Landscape Convention. Their approach is both critical and constructive. Based on a detailed review of binding planning documents, they propose a range of reforms, showing that meaningful change is possible using existing tools—if only political will were stronger. The chosen model area is the Lipno region, a major tourist destination with a rich cultural history and a drastically altered hydrological system. The construction of the reservoir transformed both the landscape and local life. The students’ vision seeks a renewed balance between nature, culture, and the needs of modern society.

Barcelona International Landscape Biennial

Contact via email:
biennialadm@coac.net

Venue:
COAC - Col·legi Oficial d'Arquitectes de Catalunya
Carrer Arcs 1-3, 08002 Barcelona - Spain

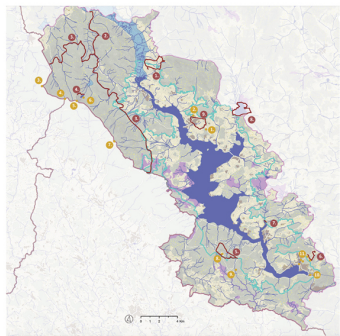
Why does spatial planning have a defined role, while landscape planning remains marginal?

Is the current legislative framework for spatial planning fit for purpose?

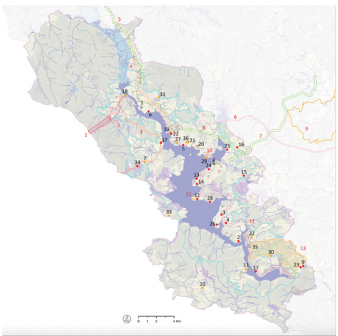
To what extent is the National Strategy for Climate Change Adaptation being respected?

Why has the European Landscape Convention not yet been fully implemented?

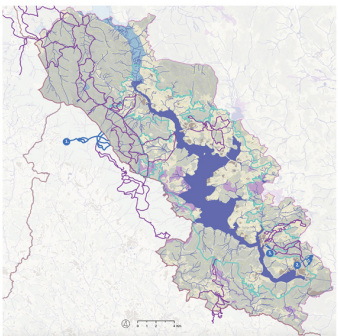
better... well, yeah...



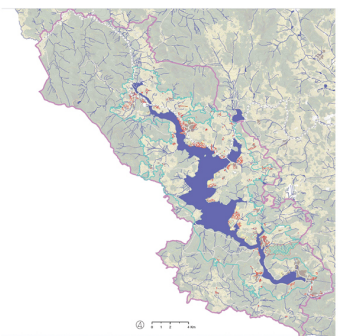
Map of Tourist Attractions



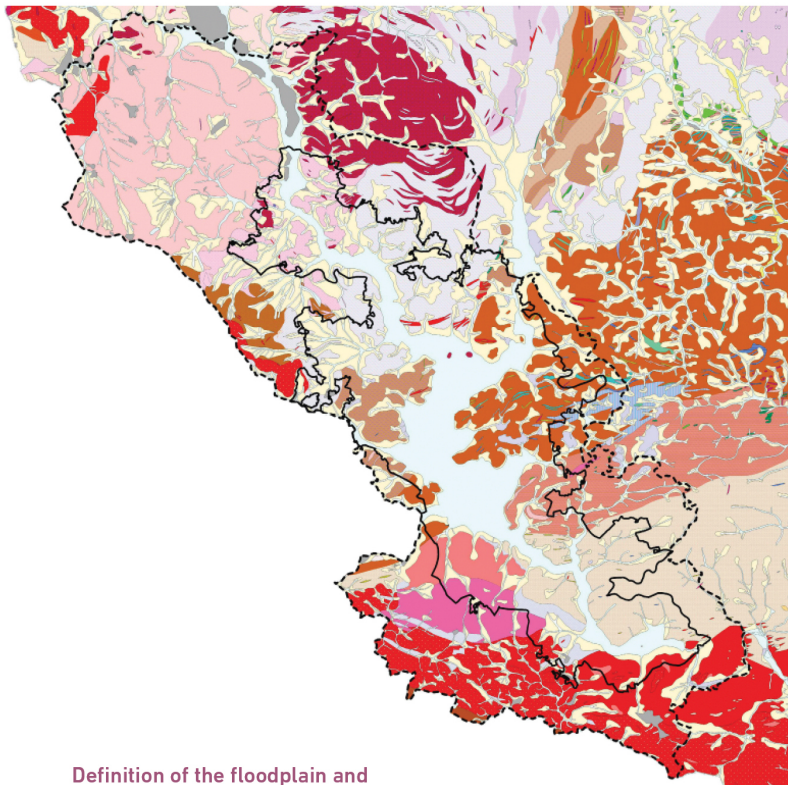
Map of Development Objectives from the Regional Spatial Plan and Planned Projects in the Lipno Region



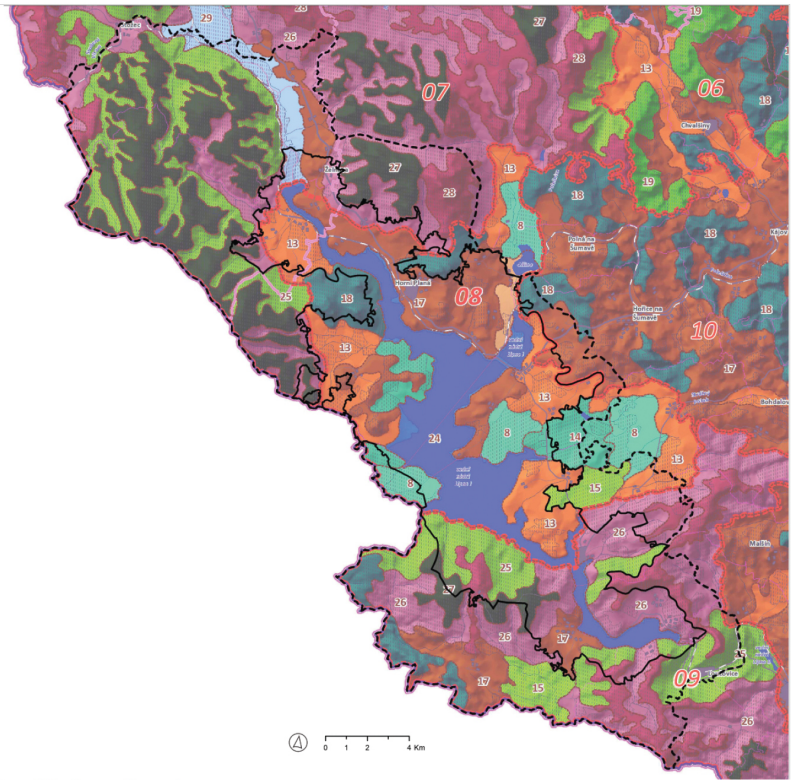
Map of Winter Tourist Attractions



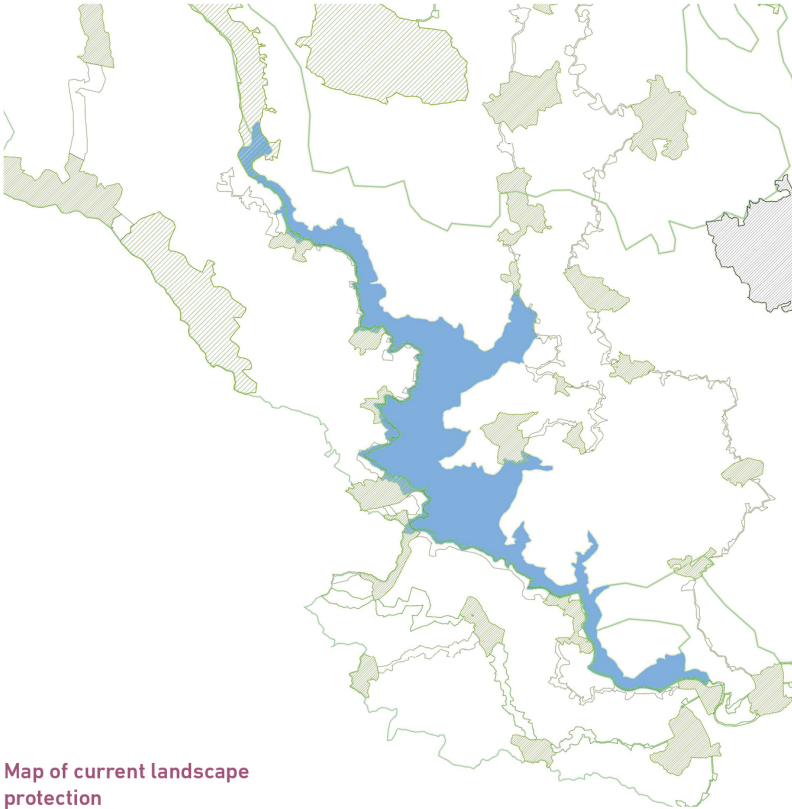
Map of Developable Areas According to Valid Municipal Land-Use Plans



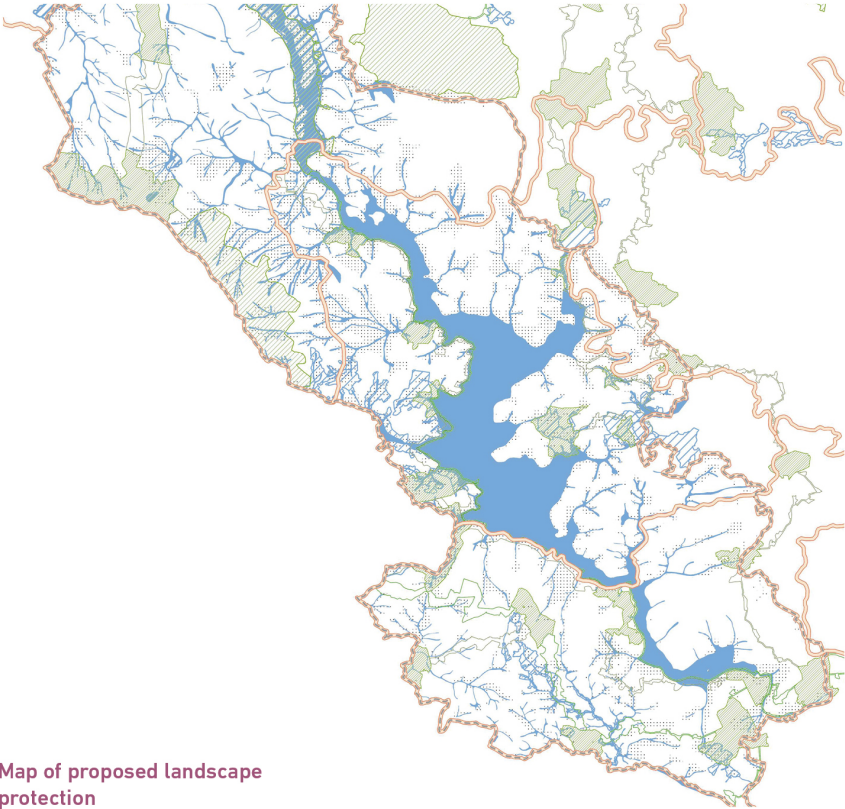
Definition of the floodplain and alluvial ecosystems



Map of the Specific Area Based on the Landscape Study of the South Bohemian Region



Map of current landscape protection in the valid Regional Spatial Plan



Map of proposed landscape protection in the valid Regional Spatial Plan