

# URBAN BAND-AIDS

small healing touches to the city

Please provide a 250-word text explaining the selection criteria used to choose the five projects representing the school in the Ribas Piera Prize. Detail the aspects evaluated, such as conceptual quality, innovation, thematic relevance, technical resolution, or any other criteria considered in the selection process with a single image, characteristic of the academic process, to accompany the text.

This report outlines the selection criteria for five student projects chosen from the 2024-2025 studio courses at Akdeniz University, Faculty of Architecture, Department of Landscape Architecture. Among the selected works, one project involves the design of a hotel complex, while the remaining four focus on coastal redevelopment with the potential to make a significant positive impact on urban life. Each project demonstrates a strong connection between design vision and environmental responsibility. The main selection criteria included:

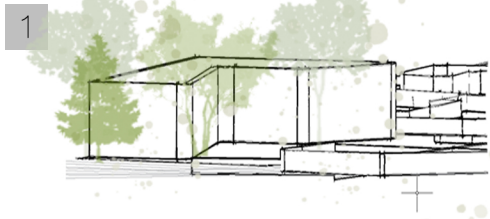
- **Sustainability:** Projects were evaluated based on their ecological sensitivity and integration of sustainable landscape practices.
- **Originality:** Unique conceptual approaches and innovative design strategies were prioritized.
- **Contribution to the City:** Designs were selected for their potential to enhance urban quality and public use.
- **Presentation Techniques:** Effective visual communication through drawings, models, and digital media was essential.
- **Compatibility with Urban Structure:** Projects needed to reflect an understanding of and harmony with the surrounding built environment.

The selected works exemplify contemporary landscape architecture's role in shaping resilient, inclusive, and livable urban spaces. They reflect the department's commitment to fostering creative and context-sensitive design thinking.



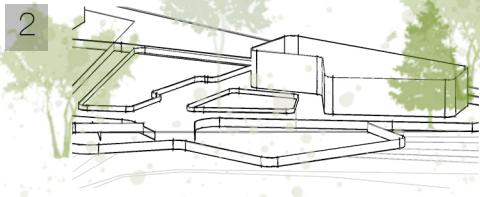
# studioLAB

## Multifunctional Spaces For Work, Socializing, And Creativity



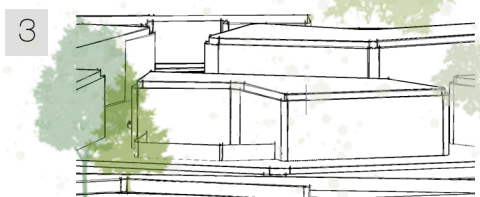
1 A space has been planned where work can be done in an open area. It provides a space where production and personal expression can exist.

This studio offers a kitchen experience surrounded by nature. The spatial design transforms kitchen activities into a social sharing environment.

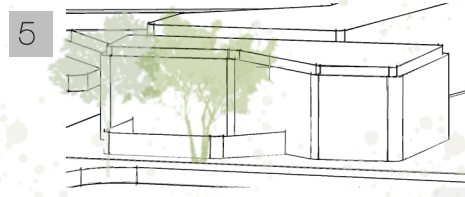
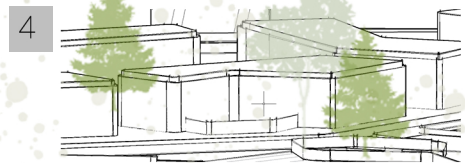


2 This open space is not just a connecting surface, but a meeting and resting point. It creates a spot to enjoy the view with a cup of coffee.

The studio is designed as a meeting point for art. A space has been planned where work can be done in an open area.

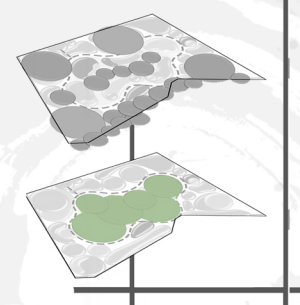


3 The flexible space design adapts to different activities. There is an open work area for yoga and meditation.



- 1 Hobby Studio
- 2 Coffee shop and terrace
- 3 Development Studio
- 4 Gastronomy Studio
- 5 Art Studio

### Analyses



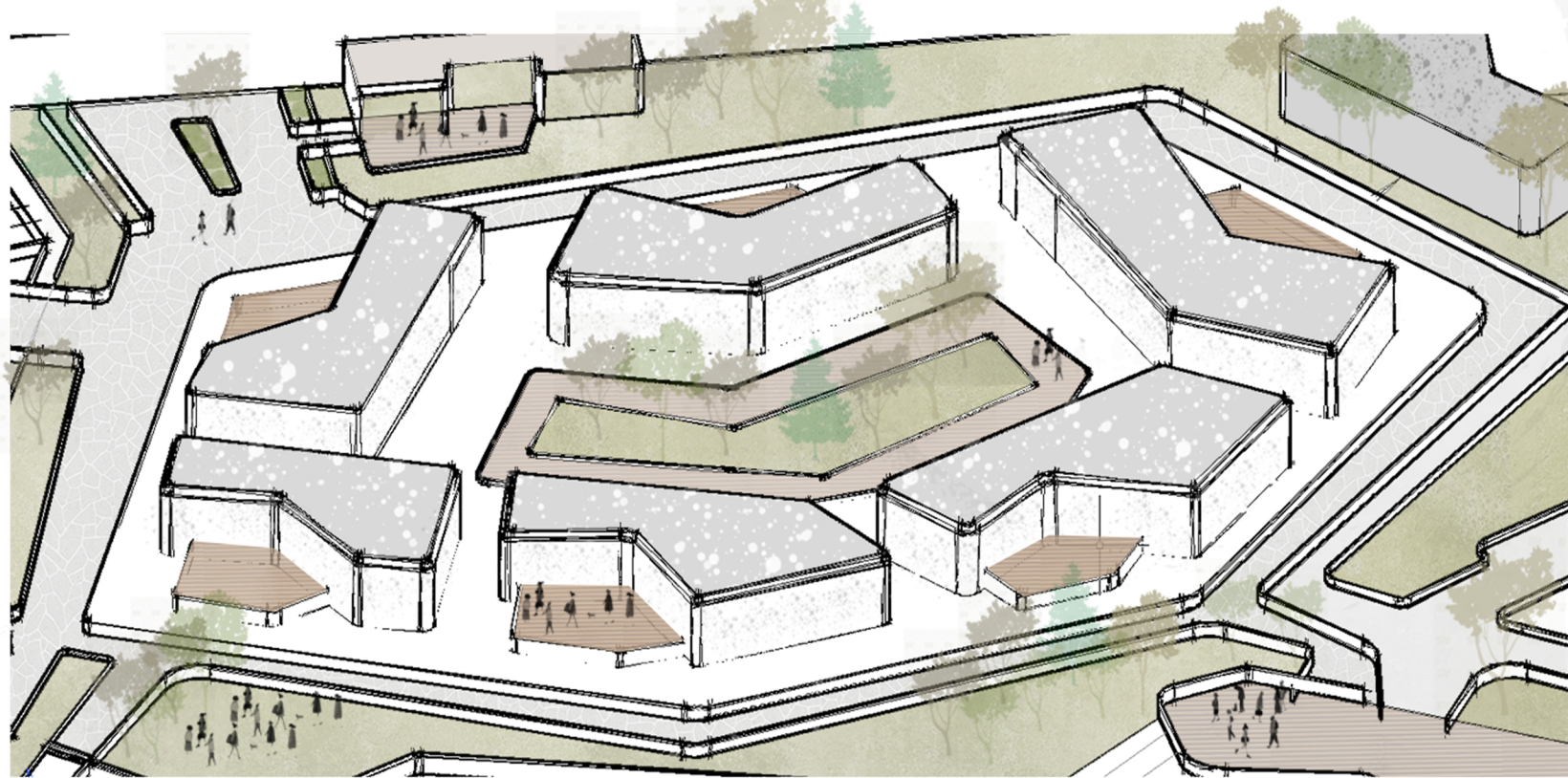
### Contextual Response to Urban Needs

This project was designed as a strategic intervention in the city, taking into account the needs of the existing urban fabric. Developed with an approach that respects urban memory but responds to the dynamics of contemporary life, the design acts as a "patch" in the urban fabric, filling in what is missing, giving meaning to functional voids, and offering a new public space that enhances social interaction.



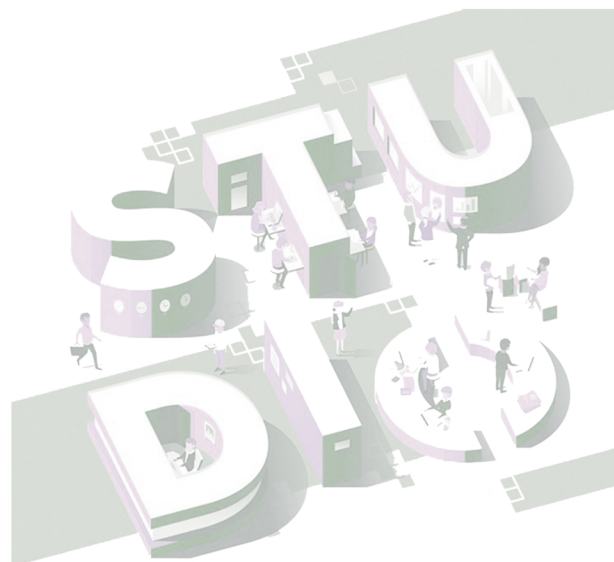
Country/City Turkey / Antalya  
 University / School AKDENIZ UNIVERSITY  
 Academic year 2024-2025 spring  
 Title of the project STUDIOLAB  
 Authors ESRA TORUN



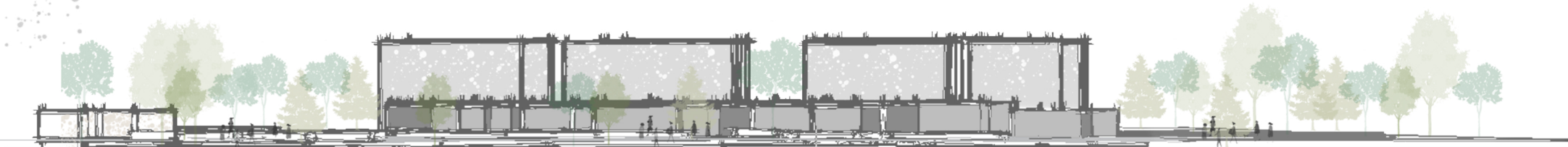


Visualization Of The Area

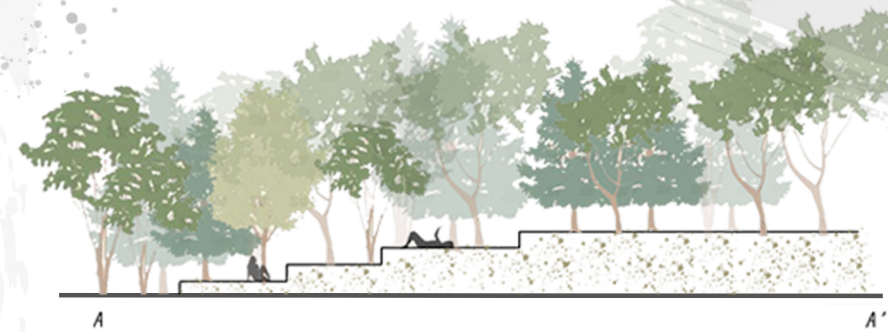
The project is actually a conscious stitching into a gap that has opened up over time in the fabric of the city, unnoticed but felt. City studios that every city needs and that can cater to many individuals, institutions, and civil society organizations in the city... These spaces were designed as public, multi-functional areas that are compatible with a social management approach, where a group of students can come and conduct workshops, and where various activities ranging from handicrafts to gastronomy can be carried out.



Section 3



Section 1



This project aims to create a multifunctional studio space that serves as a meeting point for trainings, workshops, and various events. The designed environment offers a flexible structure to support the creative processes of individuals and groups, aiming to provide a setting adaptable to the needs of different activities and practices.

Section 2



This studio space, surrounded by nature and with boundaries blurred by glass walls, is a hub for production, sharing, and transformation. Each unit quietly fulfills its function while contributing to a larger dialogue, bringing together different layers of life such as gastronomy, art, learning, and relaxation.

The high-ceilinged, open-plan spaces, bathed in natural light, offer a spatial experience that does not restrict users but rather inspires them to move.





Title of the project	STUDIOLAB
Authors	ESRA TORUN
Title of the course	LANDSCAPE PROJECT V
Academic year	2024-2025 Spring
Teaching Staff	PROF. DR. TAHSIN YILMAZ
Department / Section / Program of belonging	LANDSCAPE ARCHITECTURE
University / School	AKDENIZ UNIVERSITY



Written statement, short description of the project in English, no more than 250 words

This project is a strategic intervention that demonstrates an approach sensitive to the urban fabric and takes into account the needs of the existing structure. Respecting urban memory, the design responds to the changing rhythm of contemporary life and acts as a "stitch" that fills the gaps in the city, gives meaning to unused spaces, and offers a new public meeting place. The aim is to create a multi-functional studio space capable of hosting educational programs, workshops, and various events.

The designed structure aims to create an adaptable environment for different disciplines and activities, offering a flexible space to support the creative processes of individuals and groups. While each module quietly fulfills its own function, it creates a spacious area that brings together different layers of life, such as gastronomy, art, learning, and relaxation.

Barcelona International Landscape Biennial

Contact via email:  
biennialadm@coac.net

Venue:  
COAC - Col·legi Oficial d'Arquitectes de Catalunya  
Carrer Arcs 1-3, 08002 Barcelona - Spain





Country/City  
University / School  
Academic year  
Title of the project  
Authors

TÜRKİYE / Antalya  
Akdeniz University / Faculty of Architecture  
2024-2025  
Brewlance Garden  
Hasret EROĞUL



Title of the project Brewlance Garden  
 Authors Hasret EROĞUL  
 Title of the course Project 5  
 Academic year 2024-2025  
 Teaching Staff Prof.Dr. Tahsin YILMAZ  
 Department / Section / Program of belonging Department of Landscape Architecture  
 University / School Akdeniz University / Faculty of Architecture



Written statement, short description of the project in English, no more than 250 words

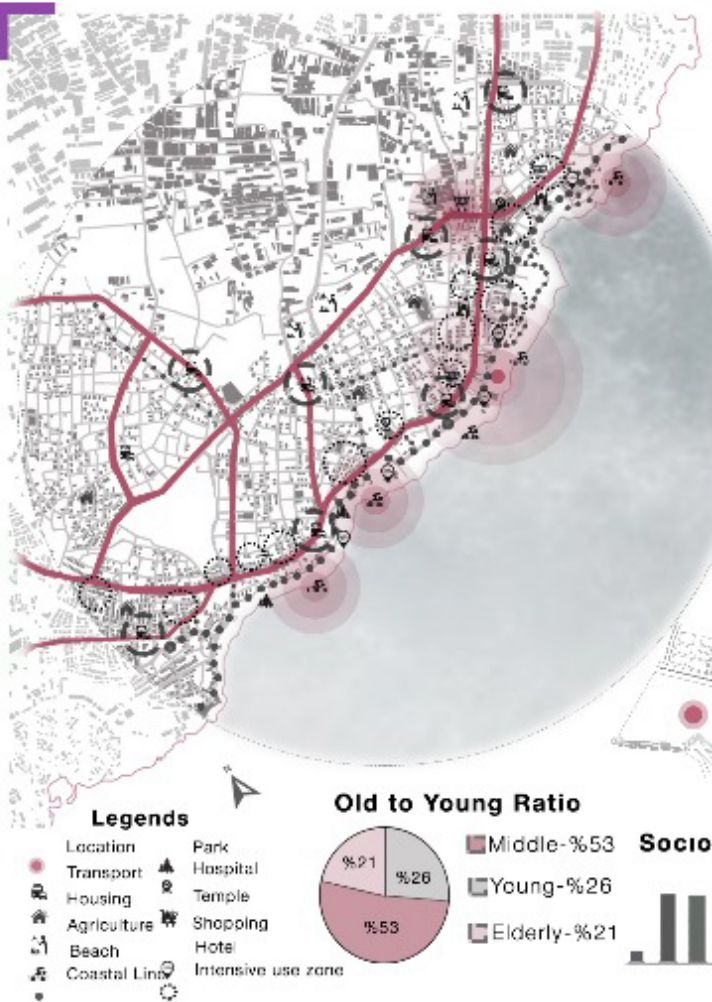
...The coming together of humanity with coffee is a long and interesting historical process. Coffee has an important place in many cultures around the world, creating a common point for different societies and bringing various meanings and interpretations. Inspired by this journey of coffee, the space is designed to be both informative and educational, with sections representing the coffee cultures of different countries. These sections offer users a rich and varied coffee experience. It also aims to provide an opportunity to get to know different coffee cultures around the world. Brewlance Garden\* is designed for those who know that coffee is not just a drink, but a culture. Inspired by world coffee traditions, we offer a different story with every sip. Here, we blend coffee with art, music and conversation to offer an inspiring experience that awakens your senses.

Barcelona International Landscape Biennial

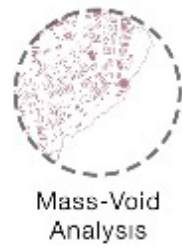
Contact via email:  
 biennialadm@coac.net

Venue:  
 COAC - Col·legi Oficial d'Arquitectes de Catalunya  
 Carrer Arcs 1-3, 08002 Barcelona - Spain





## AREA ANALYSIS DIAGRAMS



### Population

17.683 individual

### User Profile



### Location

Sirinyali, Lara Cd.  
No : 112, 07160  
Muratpaşa/Anıyala

### Socio-Economic Status



### Recreation Zone

The event area where large coffee festivals and exhibitions are held is designed for large organizations. These areas are located at the view point and offer a pleasant area to the users.

### Residential Area



## Field Perspective View



### Shopping District

Designed to meet the needs of visitors, these venues include a coffee sales point, equipment for use in coffee training areas, and a souvenir market.

## Project Analysis Indicators



## Sectional Views

### User Time Diagram





Title of the project	ARKEO PARK
Authors	SELİN KÖŞ
Title of the course	LANDSCAPE PROJECT V
Academic year	4th GRADE
Teaching Staff	PROF. DR. TAHSİN YILMAZ
Department / Section / Program of belonging	LANDSCAPE ARCHITECTURE
University / School	AKDENİZ UNIVERSITY



Written statement, short description of the project in English, no more than 250 words

On the edge of the cliffs, where the sea meets the sky... Time seems to stand still. But beneath the ground, the voices of thousands of years still whisper. It is here that Arkeopark rises, not just a park, but a living memory space where the pulse of the past beats.

This project transforms visitors not into nature explorers, but into witnesses walking through time. The park's route is a historical tunnel spanning from the first traces of the Paleolithic era to the awakening of the Neolithic, the fire of the Bronze Age, the birth of Greek thought, the splendor of Rome, the silence of the Middle Ages, and the rebirth of the Renaissance.

Each section is integrated with fictional structures that tell the story of their era, period-appropriate vegetation, and the atmosphere of an archaeological site. Every step traces the footsteps of an era; every stop whispers the echoes of centuries into your ear.

This park, respectfully nestled into the natural structure of the cliffs, is a stage where nature and history come together. Walking here is not just about touching the past, but also about touching humanity, our roots, and time itself.

Barcelona International Landscape Biennial

Contact via email:  
biennaladm@coac.net

Venue:  
COAC - Col·legi Oficial d'Arquitectes de Catalunya  
Carrer Arcs 1-3, 08002 Barcelona - Spain



# ARKEOPARK

## Design Approach

The main goal in the park's design is to make visitors feel as if they are traveling through different periods of time from the moment they enter the park. Each section is planned to offer a historical transition. Visitors will explore various eras, starting with the Paleolithic Period, and interact with elements specific to each period.

Another aim of the design is to integrate the historical atmosphere with the sea. The areas are arranged in harmony with the natural environment, creating a spatial unity influenced by the sea. This archaeology-themed approach aims to offer visitors a historical experience.

## Historic Site

The historical areas that form the main concept of the park carry the traces of the past into the present and offer visitors a historical journey experience. These areas reflect the spirit of the park in both aesthetic and cultural terms, enabling visitors to establish a strong connection with the past.



## Viewpoint

Throughout the park, there are carefully positioned viewing points overlooking the sea; these areas enrich both the relaxation and observation experience by allowing visitors to connect visually with their surroundings.



## Rest Area

Rest areas located at various points throughout the park offer visitors the opportunity to take short breaks while interacting with their surroundings. Designed to blend in with the natural environment and be functional, these areas promote relaxation and social interaction.



## Archaeology & Art

The archaeological park is designed as a special area that brings together traces of the past with modern art. Historical remains and works of art come together to offer visitors both an aesthetic experience and a cultural discovery. This combination blends archaeological values and artistic expression to create the spirit of the park.



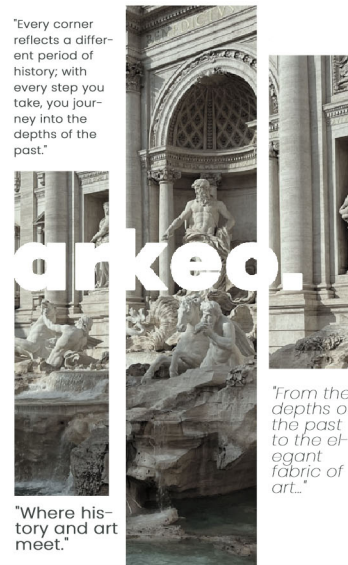
## Rest Area

This visual reflects a design concept that allows individuals to escape their daily routine and experience cultural values while connecting with nature in the peaceful and exploration-oriented atmosphere of the park.



## Historical Milestones

Each area, located at different points in the park, represents a specific historical period. Visitors discover various layers of the past through each corner and experience traces of historical continuity. This design aims to provide a deep understanding of both historical and cultural contexts.



## Spatial Transition

This section visually presents the spatial layout of the park and the transitions between different areas for users. By clearly showing the relationship between archaeological sites, rest areas, and scenic viewing areas, it enables an understanding of the park's overall design.

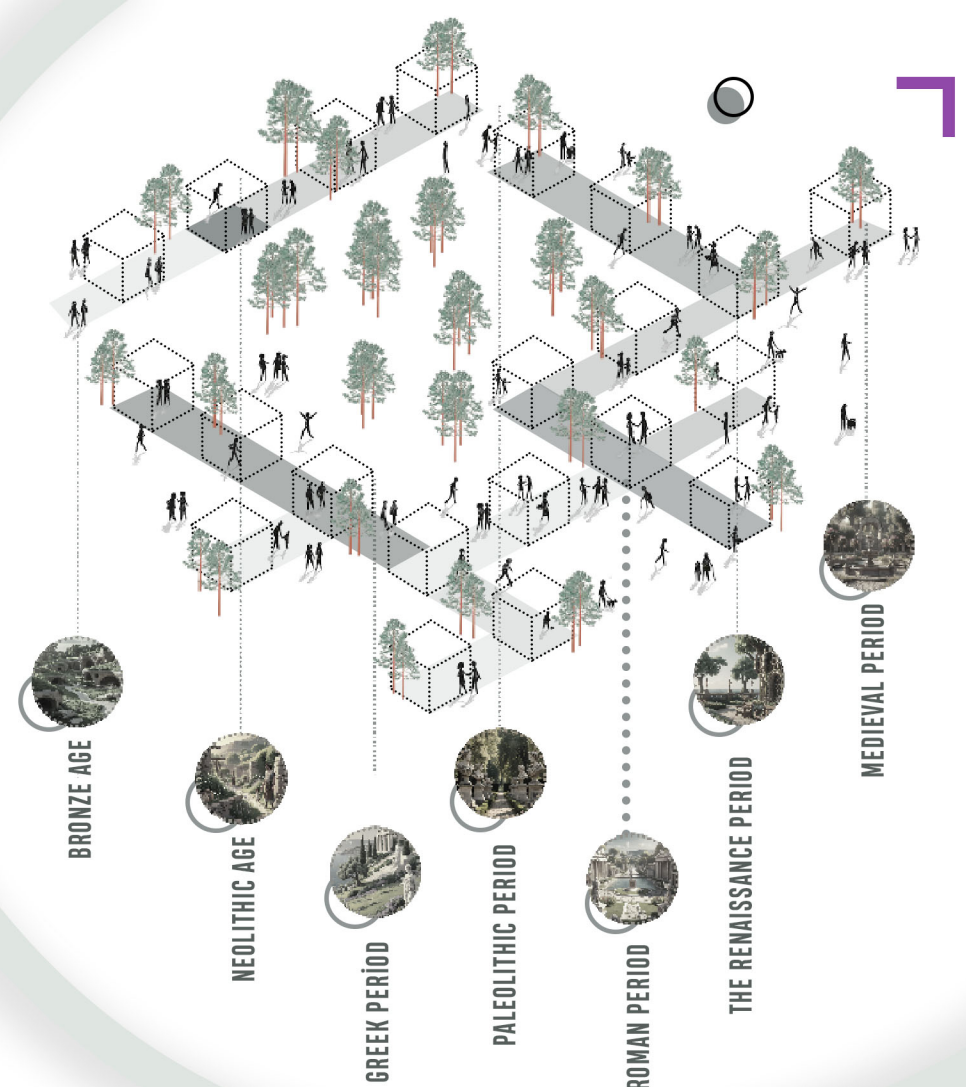
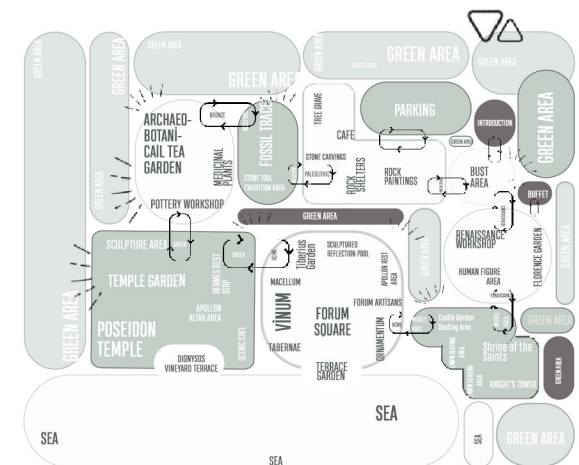


## Program Schedule

The program diagram clearly illustrates the functional structure of the archaeology-themed park.

Unlike the conceptual plan, this diagram, created with straight lines, visually expresses a historical journey through space by functionally placing each historical period and archaeological site.

This approach clearly presents the functionality and interaction of each section, reflecting how the design is organized in an archaeological context.



Country/City

TURKEY / ANTALYA / KONYAALTI

University / School

AKDENIZ UNIVERSITY

Academic year

4th GRADE

Title of the project

ARKEO PARK

Authors

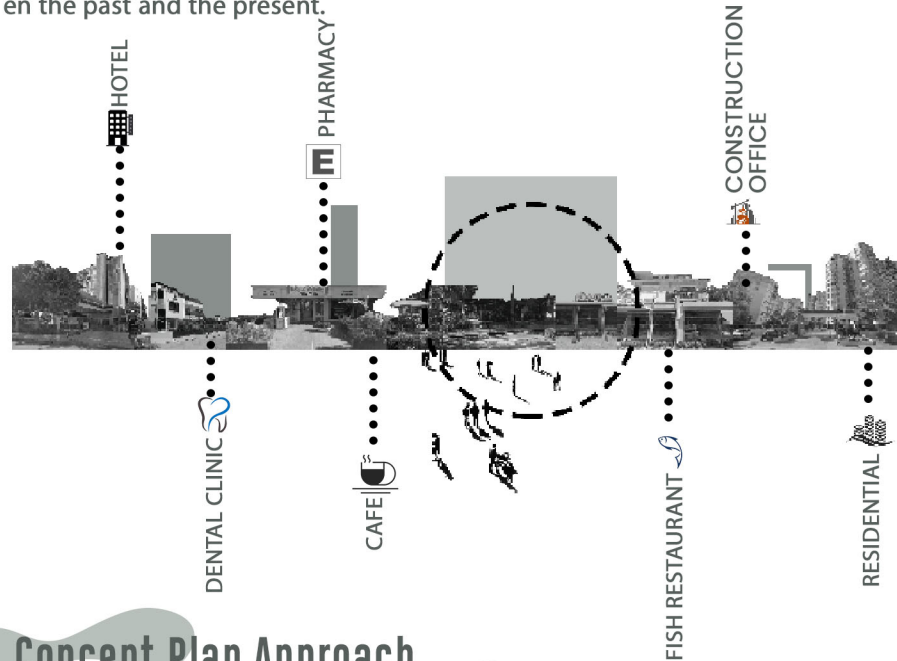
SELİN KÖŞ



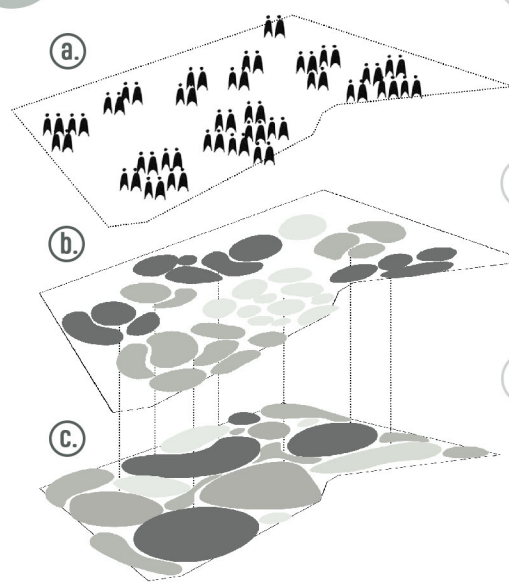
# ARKEOPARK

## Design Approach

The design is a proposal for an archaeological park that aims to create cultural awareness on an urban scale while preserving the natural structure of the cliffs. Referencing Antalya's multi-layered historical structure, a public space has been designed that establishes a physical and mental connection between the past and the present.



## Concept Plan Approach



a. The park is divided into seven thematic areas, each reflecting a different historical period. The most notable themes are located in areas with high scenic value and easy access.

b. The approach aims to balance movement within the park while enhancing the visitor experience. The unique architectural and landscape elements in each area reflect the atmosphere of different periods.

c. The design enhances the cultural function of the park while supporting aesthetic and spatial integrity. The balanced distribution of visitor flow enables efficient use of the space and a quality experience.

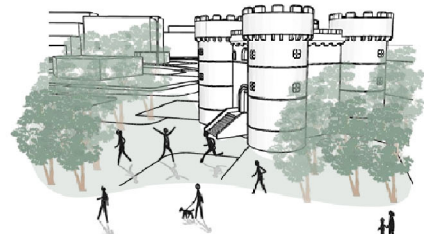
## Sketch Drawings



FORUM INTERIOR  
'rome'



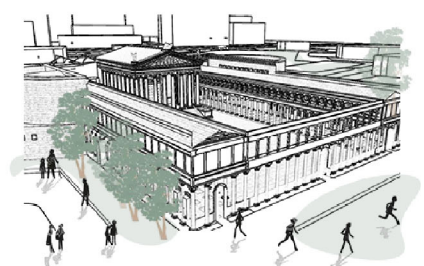
PARK ENTRANCE  
'greek'



KNIGHT'S TOWER  
'medieval'

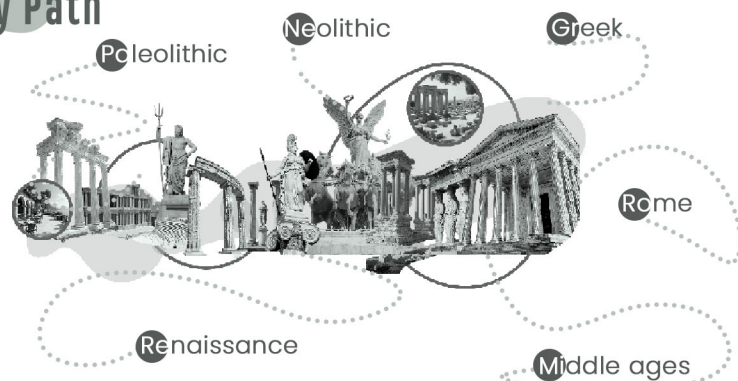


POSEIDON TEMPLE  
'greek'

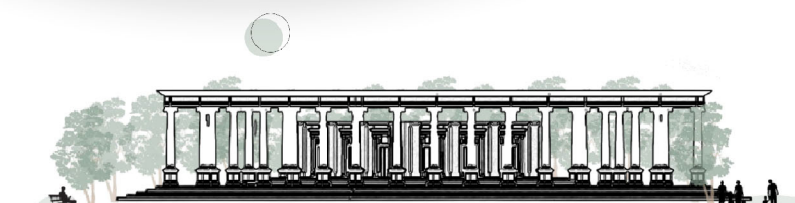
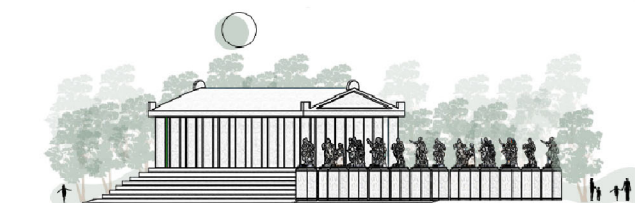


FORUM AREA  
'rome'

## History Path

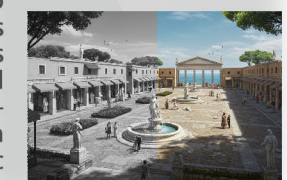


## Area Sections

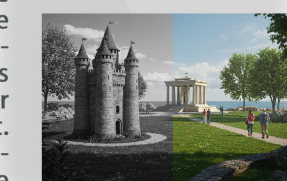


## How do we imagine?

This area, dating back to the Roman period, forms the heart of the city's commercial and social life. The shops and markets around the Forum Square create a dynamic atmosphere that reflects Rome's economic life.



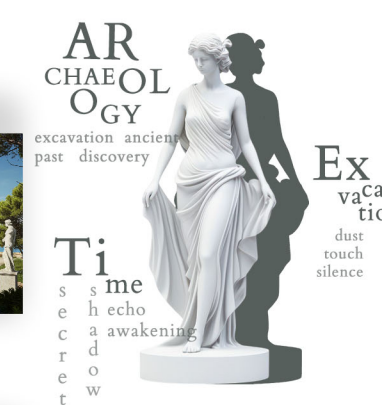
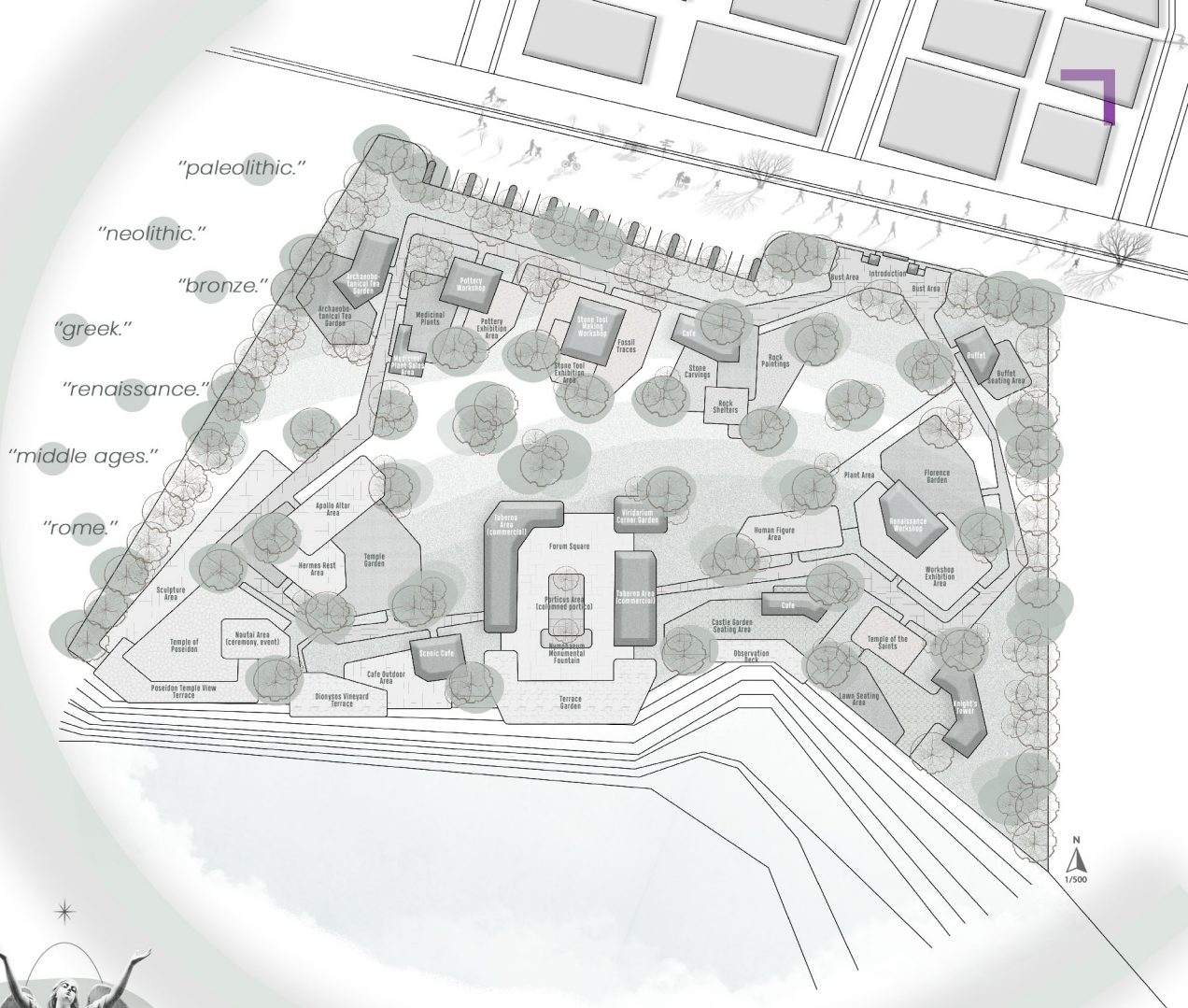
Inspired by the Middle Ages, this area reflects the military and religious structure of the period with its miniature knight's tower and the temple behind it. The tower symbolizes protective power, while the temple symbolizes religious beliefs.



Inspired by ancient Greece, this area offers visitors the opportunity to discover Greek culture with a Doric-style temple dedicated to Poseidon and surrounding mythological statues.



The large columns at the entrance to the archaeological park are an elegant example of ancient architecture. These columns emphasize the historical atmosphere of the park and offer visitors the opportunity to discover traces of the past.





Title of the project Dreamscape Photography Park

Authors Elif DURAN

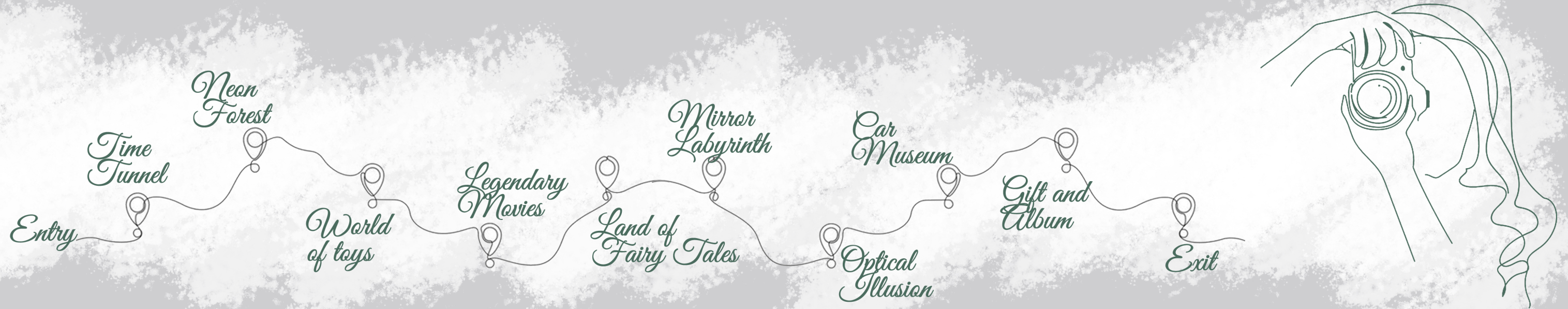
Title of the course Project V

Academic year 2024 - 2025

Teaching Staff Prof. Dr. Tahsin YILMAZ

Department / Section / Program of belonging Landscape Architecture

University / School Akdeniz University



**Written statement, short description of the project in English, no more than 250 words**

Dreamscape Park is a route of discovery for visitors of all ages, woven with dreams, memories and aesthetics. The magic of fairy tales for children, powerful visuals and entertainment for young people, nostalgia and unique photo frames for adults, and textures and colors that refresh memories for the elderly meet in the same space. The design offers the visitor scenes to be a part of, not just to look at. The circulation of the park flows like a single story from beginning to end; the visitor captures a new atmosphere, a new frame in each area as they travel. The visiting process is not just a momentary experience, but a lasting memory that eventually turns into a real photo album or frame. Polygonal structures and movable platforms that can take shape according to weekly changing concepts reinforce the flexibility and ever-renewing character of the space. Dreamscape Park is not a static landscape, but a living, transforming space that makes each visitor the hero of their own story.

Barcelona International Landscape Biennial

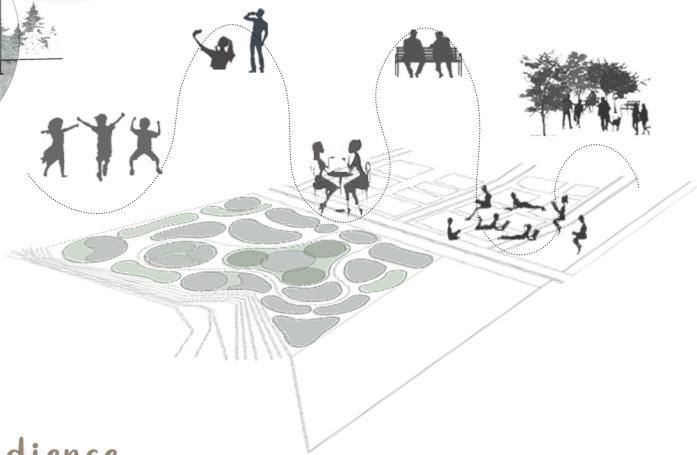
Contact via email:  
biennaladm@coac.net

Venue:  
COAC - Col·legi Oficial d'Arquitectes de Catalunya  
Carrer Arcs 1-3, 08002 Barcelona - Spain



# Dreamscape

## Photography Park



### Target Audience

Dreamscape Park is designed to appeal to users of all age groups. An inclusive experience is aimed by offering a variety of thematic areas for individuals with different interests.



### Legendary Movies

Inspired by the stage designs of cult productions such as Game of Thrones, Harry Potter and Marvel, this area offers movie lovers the opportunity to experience unforgettable movie frames.



### Time Tunnel

Stretching from the 60s to the present day, this tunnel takes visitors on a journey through time with scenes reflecting each decade. Nostalgic memories are revived with the music, objects and atmosphere of the period.

### Neon Night Forest

This forest is adorned with bright neon lights, creating the effect of night and offering a mesmerizing walking experience. The play of light and color transitions create a unique atmosphere for photography.



### World Without Gravity



In this special room that subverts the visitors' perception of space, a zero-gravity experience is created with optical illusions and technological infrastructure.

### Car Museum

This area, where classic vehicles are exhibited, prepares the ground for photo shoots with retro aesthetics and offers a visual feast to car enthusiasts.



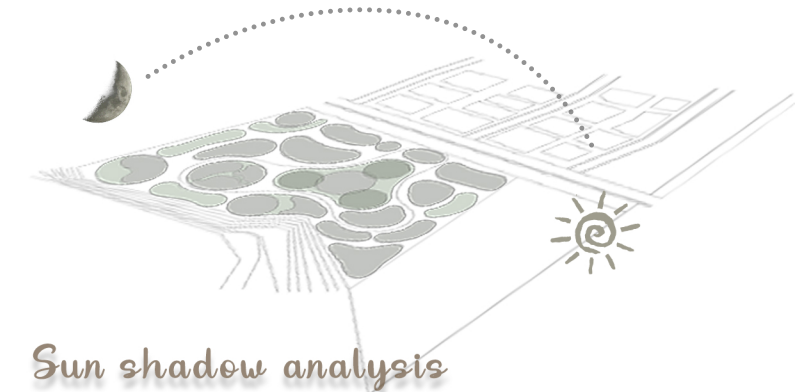
### Optical Illusion

Equipped with lines, shapes and illusions that push the limits of perception, this space offers visitors a visual game. It creates stunning compositions for photo shoots.



### Final project

Polygonal modern structures are used in the project area, and the photography areas are designed with movable platforms that will adapt to weekly changing concepts. The area has a dynamic and experience-oriented structure with light, height and vegetation arrangements.



### Sun shadow analysis

In Dreamscape Park, a photography-oriented space, the direction of natural light and the movement of shadows were decisive in the positioning of the spaces. Sun-shadow analysis was used to support ideal shooting angles and visual depth.

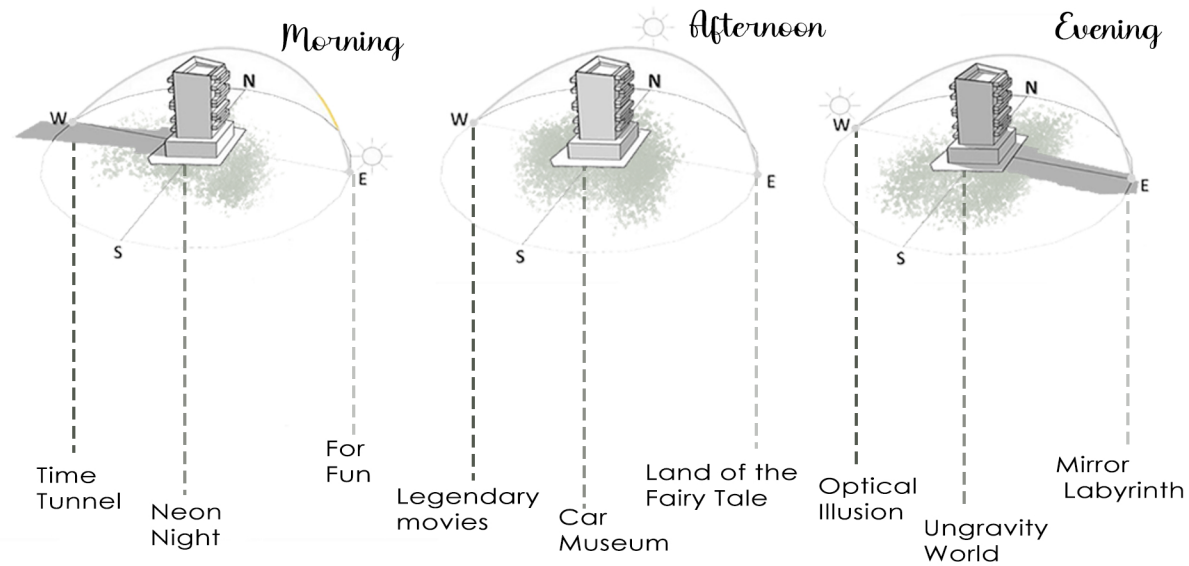
Prof. Dr. Tahsin YILMAZ

Elif DURAN

Country/City ..... Türkiye / Antalya .....  
 University / School ..... Akdeniz University .....  
 Academic year ..... 2024 - 2025 .....  
 Title of the project ..... Dreamscape Photography Park .....  
 Authors ..... Elif.DURAN .....



## Light-Direction Relationship



In this analysis, the way daylight falls on the area at different time zones was analyzed, and the most suitable spatial zones for photography were determined according to the direction and intensity of morning, midday and evening light.

A sustainable landscape is targeted with low maintenance species.

## Perspective View

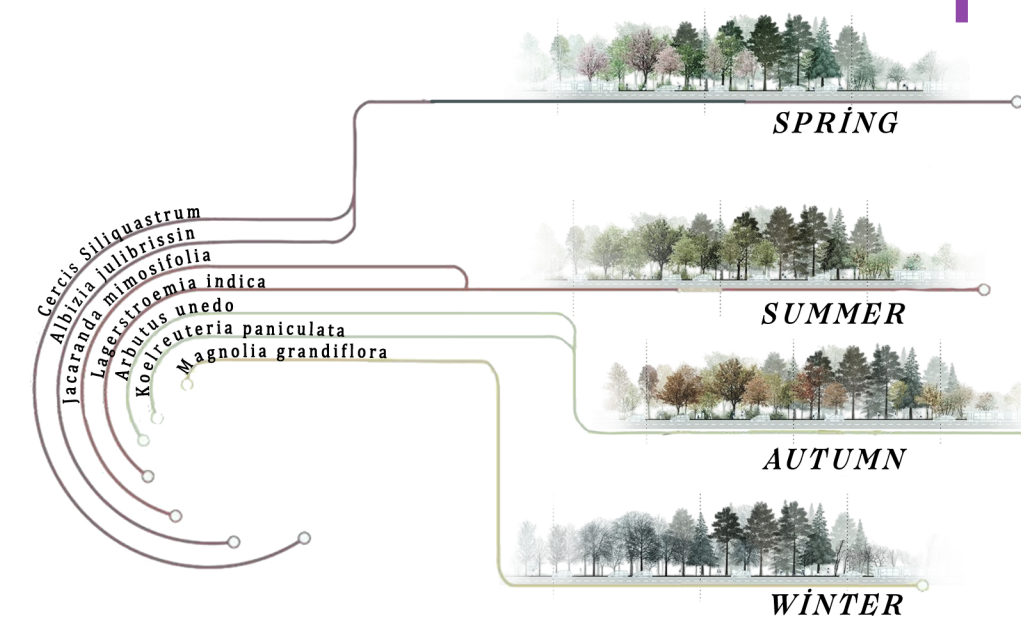


The perspective view was prepared to reflect the general spatial organization of the site and the user scale. This three-dimensional representation, supported by trees, vegetation and human figures, visually reveals the atmosphere and functional relationships of the design.

## Seasonal Analysis

The selected species are compatible with the microclimate and soil structure of the area.

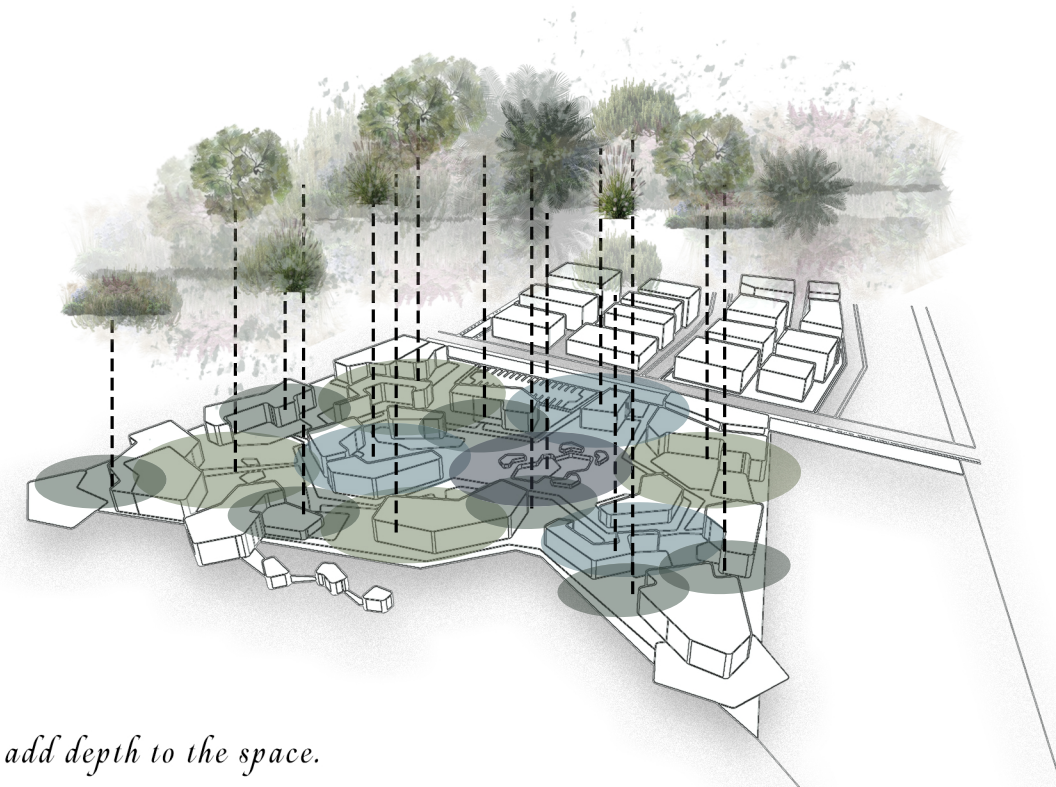
Shade-tolerant species are included in shaded areas.



This graphic shows the flowering times of selected plants throughout the year in a circular pattern. In spring, Redbud and Silk Tree stand out with their vibrant colors, while in summer Jacaranda and Oya Tree color the landscape.

## Vegetation zone

- Palm zone
- Tree zone
- Ground cover zone
- Shrub zone

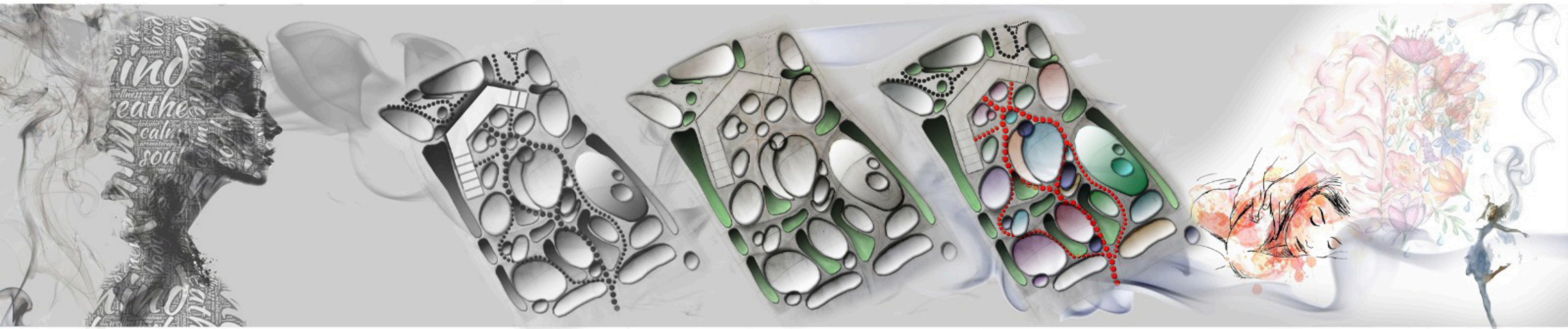


Leaf texture and color contrasts add depth to the space.

In autumn, the Golden Rain Tree and the Big Berry emphasize the seasonal transformation. In winter, evergreen species such as Magnolia maintain aesthetic integrity throughout the year.



Title of the project **Essence Of Nature Hotel**  
 Authors **Fatma Nur TAS**  
 Title of the course **Hotel Project (Landscape project 4)**  
 Academic year **2024-2025**  
 Teaching Staff **Prof.Dr.Tahsin YILMAZ**  
 Department / Section / Program of belonging **Landscape Architecture**  
 University / School **Akdeniz University**



Written statement, short description of the project in English, no more than 250 words

Within every person live three fundamental entities: body, mind, and soul. Each seeks a different balance: one desires silence, another movement, and the third peace. Eastern cultures define the harmony of these three as the "essence of life." This project was designed to unite that essence with nature and space. At its core lies aromatherapy: because scent recalls the unseen, bends time to bring the past, inspires dreams of the future, and calls one to the "now."

At the foundation of this architectural vision lies Gazi Mustafa Kemal Atatürk's timeless saying: "A sound mind is in a sound body." This saying is not only an inspiration but also the core principle of the entire design, as spiritual and mental balance can only be achieved through a healthy body.

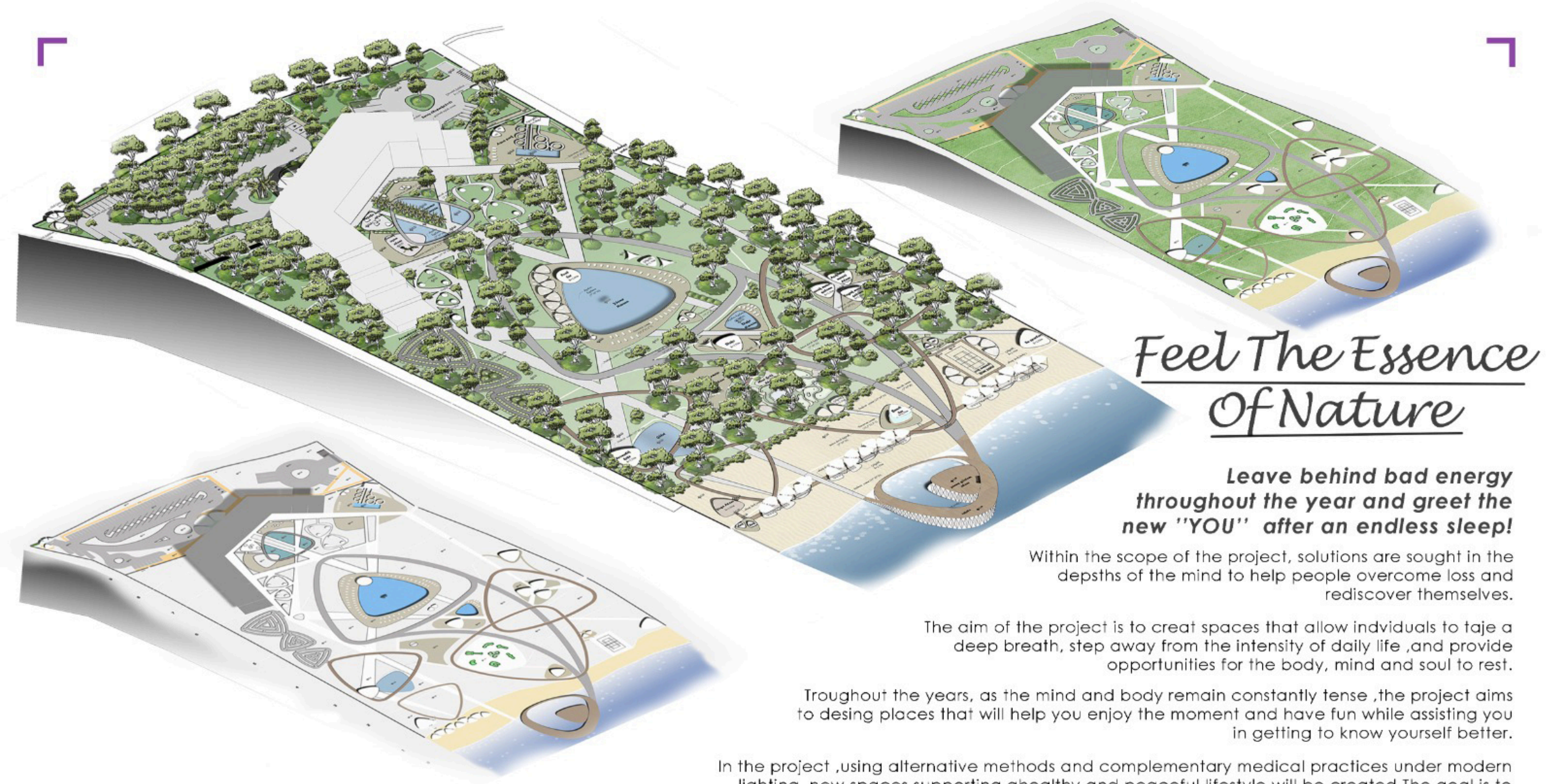
The conceptual plan draws the spirit of the design from essential oil droplets. Each droplet symbolizes an emotion, a memory, or a scent. The layout of the spaces is shaped by the forms created by these droplets. As visitors wander through these arrangements, guided by scents, they connect with the past, dream of the future, and deepen into the present.

Barcelona International Landscape Biennial

Contact via email:  
 biennialadm@coac.net

Venue:  
 COAC - Col·legi Oficial d'Arquitectes de Catalunya  
 Carrer Arcs 1-3, 08002 Barcelona - Spain





## *Feel The Essence Of Nature*

**Leave behind bad energy  
throughout the year and greet the  
new "YOU" after an endless sleep!**

Within the scope of the project, solutions are sought in the depths of the mind to help people overcome loss and rediscover themselves.

The aim of the project is to create spaces that allow individuals to take a deep breath, step away from the intensity of daily life, and provide opportunities for the body, mind and soul to rest.

Throughout the years, as the mind and body remain constantly tense, the project aims to design places that will help you enjoy the moment and have fun while assisting you in getting to know yourself better.

In the project, using alternative methods and complementary medical practices under modern lighting, new spaces supporting a healthy and peaceful lifestyle will be created. The goal is to provide opportunities to enjoy relaxation and the pleasure of discovering new places and things.

**The taste of life is experienced  
through the sense of smell  
ENJOY LIFE**

Country/City **TURKEY / ANTALYA**  
University / School **Akdeniz University**  
Academic year **2024-2025**  
Title of the project **Essence Of Nature Hotel**  
Authors **Fatma Nur TAŞ**



# Essence Of Nature Hotel

## Design Destination

As a design idea; Today, it is planned to create areas that will enable people to realize their own body, mind and soul while on vacation and to feel the moment by using preventive and therapeutic methods for health problems caused by intense working conditions and being in the age of technology. Thus, places where we will have fun, rest and return to our essence during the holiday and where fun trainings will be given to support their healthy lives after the holiday are designed.



## Inspiration Of The Project

Just as an object requires three equal points to remain balanced, the main framework of the landscape design is formed by triangular axes. These triangles, resembling pena shapes, serve as spatial metaphors for the body-mind-soul triad. Thus, each form represents not only a shape but also a thought and a feeling.

At the foundation of this architectural vision lies Gazi Mustafa Kemal Atatürk's timeless saying: "A sound mind is in a sound body." This saying is not only an inspiration but also the core principle of the entire design, as spiritual and mental balance can only be achieved through a healthy body.

