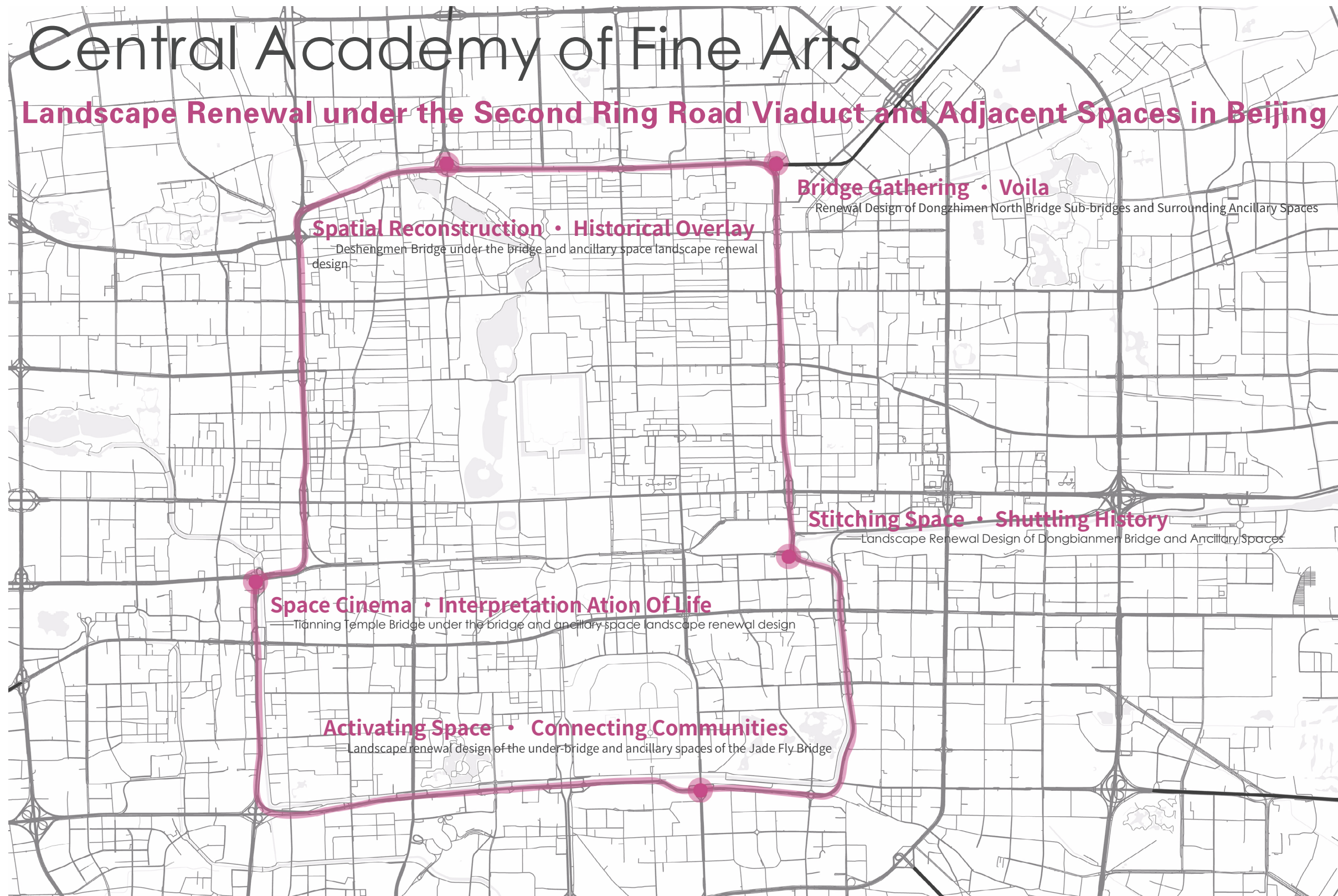


Central Academy of Fine Arts

Landscape Renewal under the Second Ring Road Viaduct and Adjacent Spaces in Beijing



Phase I

Recognising the site: recording the site, behavioural observations and identifying .

Problems Describing the vision: showing what you want and what you think is good about the landscape.

Research phase

2017

Phase II

Spatial abstraction: expressing the process of recognising a site and describing a vision in terms of spatial depiction .

Developing concepts: clarifying the pursuit of landscape design and the direction of problem solving.

Analysis phase

2018

Phase III

Spatial modelling: selecting specific means to shape a characteristic landscape space.

Spatial synthesis: using a combination of methods, including plants, topography, structures, etc., to shape a space .

Spatial experience: creating a rich and artistic spatial experience.

Space layout design phase

2019

Phase IV

Functional Integration: A landscape approach to solving functional problems and integrating multiple functions .

Programme Determination: Determining the basic landscape design content and layout.

Functional fit and programme definition phase

2020

Phase V

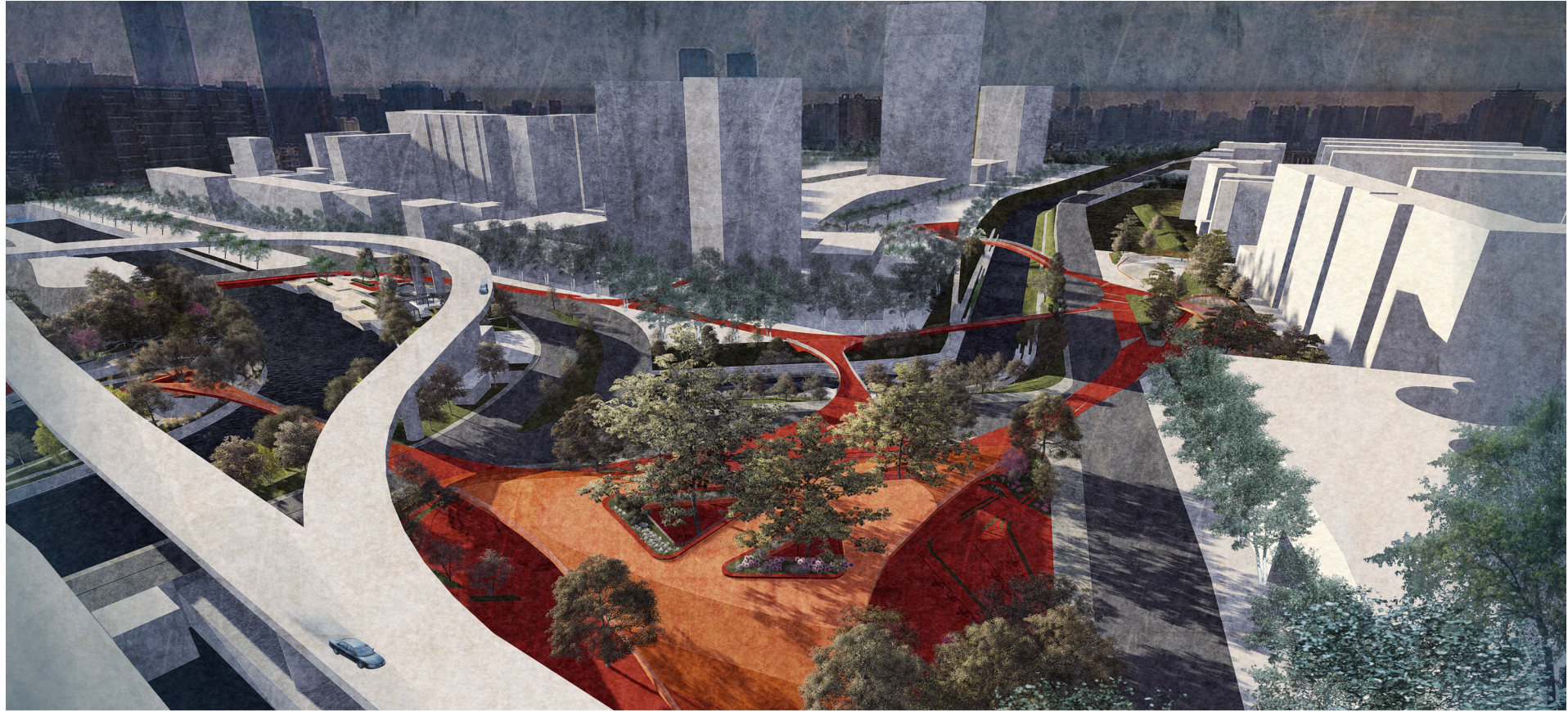
Spatial experience and detailing can demonstrate artistic qualities. Mastery of design principles, methods, basic vocabulary and skills in site analysis, functional zoning, landscape structure, traffic organisation, vertical design, architecture, topography, planting, water bodies and many other aspects.

Research Phase

2021

Please provide a 250-word text explaining the selection criteria used to choose the five projects representing the school in the Ribas Piera Prize. Detail the aspects evaluated, such as conceptual quality, innovation, thematic relevance, technical resolution, or any other criteria considered in the selection process with a single image, characteristic of the academic process, to accompany the text.

The Central Academy of Fine Arts (CAFA), the only institution of higher art education directly under China's Ministry of Education, is pioneering a new model of urban landscape renewal through the revitalisation of underutilised spaces beneath Beijing's Second Ring Road overpasses. As urban development shifts from outward expansion to internal regeneration, these long-neglected transitional zones—often abandoned or misused—present significant opportunities to enhance public space quality and urban ecological benefits. The project aligns with Beijing's "Vacant Space Greening" initiative, transforming urban interstices into vibrant, functional spaces. Five students have developed targeted renewal strategies through in-depth policy analysis and spatial typology research to optimise green infrastructure and urban livability. The curriculum employs a multifaceted teaching approach combining "theoretical lectures, case studies, and workshops," systematically advancing through five research phases: preliminary investigation, spatial analysis, layout design, functional planning, and solution refinement. By creatively reshaping these urban fringe spaces, the project not only promotes community co-creation and ecological restoration but also provides an innovative, practical model for sustainable development.

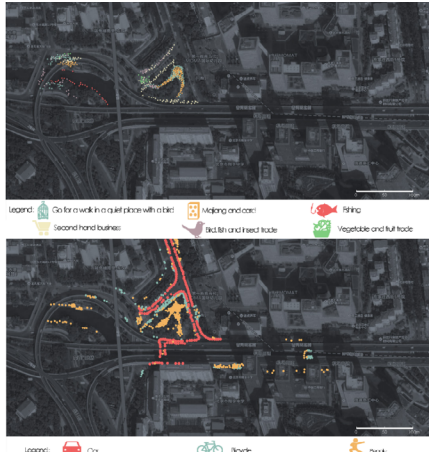


Bridge Gathering - Voila
—Renewal Design of Dongzhimen North Bridge Sub-bridges and Surrounding Ancillary Spaces

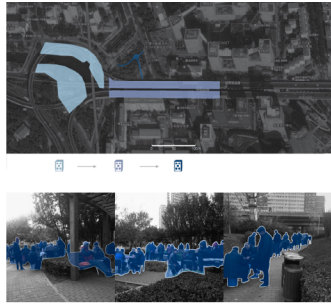
BAKEGROUND SYNTHESIS



Location: Located at the northeast corner of Beijing Second Ring Road, Dongzhimen North Bridge and Airport Expressway
Area: 10 hectares
Mixed crowds and diverse classes.
More than a dozen roads and three waterways in the site completely divide the limited site into tiny patches. Neighbouring sites and communities can not communicate north-south, East-West can not be linked. Residents are trapped in the remaining oasis between the green areas and roads of the community.

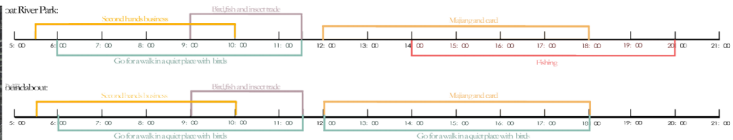
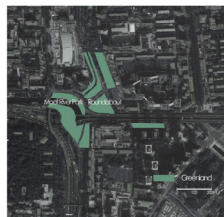


People in the area:
Various activities, such as chess and cards, fishing, trading, bird walking, etc.
Spontaneous activities resulted in dirty sites and traffic congestion. That led to the government's expulsion.



The venues for the activities:
The venues for buying and selling activities and chess and cards activities are becoming smaller and smaller, as government evictions have shifted to many places.
Trading was smuggled on both sides of the road.
Chess and card activities result in crowded venues. It is inconvenient to bring tables and chairs with you every time.
Residents scramble for space

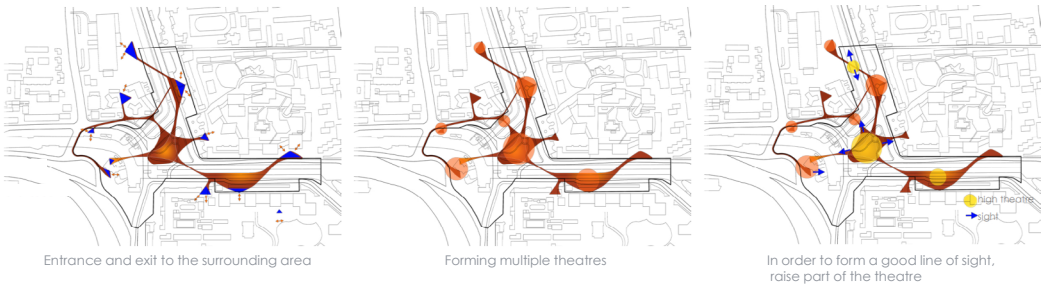
Government expulsion activities
Design venues integrate diverse activities to patch up fragmented patches. So I think of using the concept of theater to design crowds gathering and activities.



Form like the Roman Open-air Theatre: Green space surrounded by cities
Dramatic Activities and Spaces: In the same venue, different groups continue to take place in different periods of time, just like a stage by stage, performing different dramas one scene at a time.

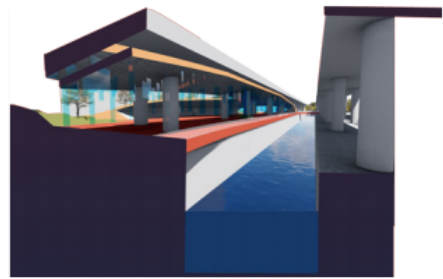
Theatre concept

GENERATION



WATERFRONT DESIGN

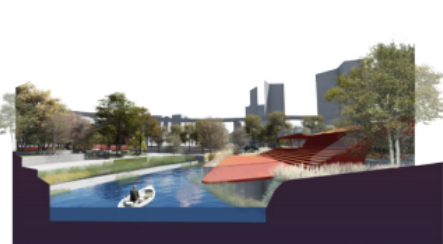
The site is located between south campus and north campus in Central Academy of Fine Arts.
On the other hand, the site is an important but informal place for residents to do exercise. But the students and teachers of CAFA (Central Academy of Fine Arts) seldom visit this place just as a traffic connection.
Because the view of this place is very boring and libraries, stadiums of south campus have no connections and access to the other campus.



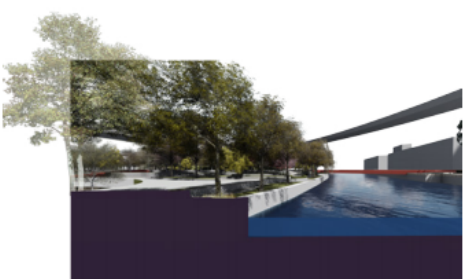
Multi-storey type between Viaducts



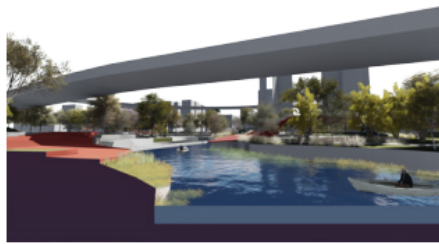
Purification of water Natural revetment



Watching platform revetment



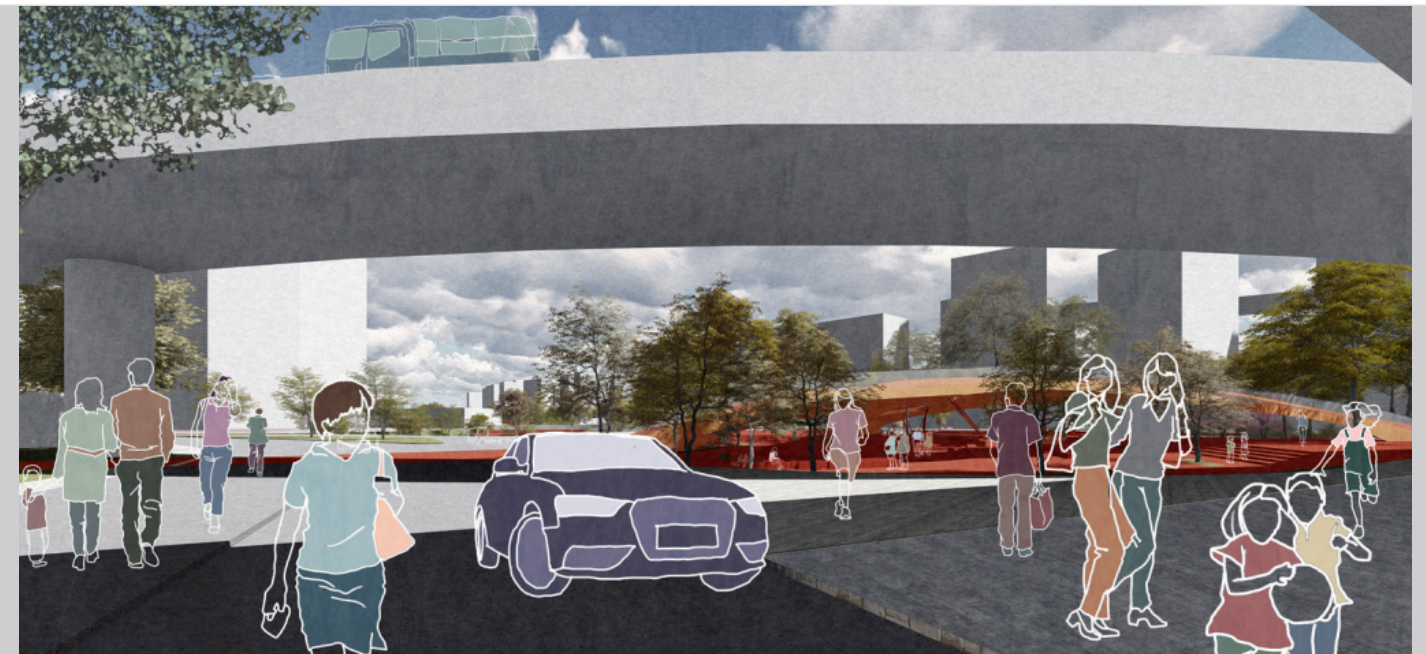
Hard revetment



Country/City
University / School
Academic year
Title of the project
Authors

Beijing
Central Academy of Fine Arts
2022
Bridge Gathering · Visual —Renewal Design of Dongzhimen North Bridge Sub-bridges and Surrounding Ancillary Spaces
Liu Xin

Title of the project	Bridge Gathering · Visual ——Renewal Design of Dongzhimen North Bridge Sub-bridges and Surrounding Ancillary Spaces
Authors	Liu Xin
Title of the course	Landscape Renewal under the Second Ring Road Viaduct and Adjacent Spaces in Beijing
Academic year	2022
Teaching Staff	Hou Xiaolei
Department / Section / Program of belonging	Department of Landscape Architecture, School of Architecture
University / School	Central Academy of Fine Arts



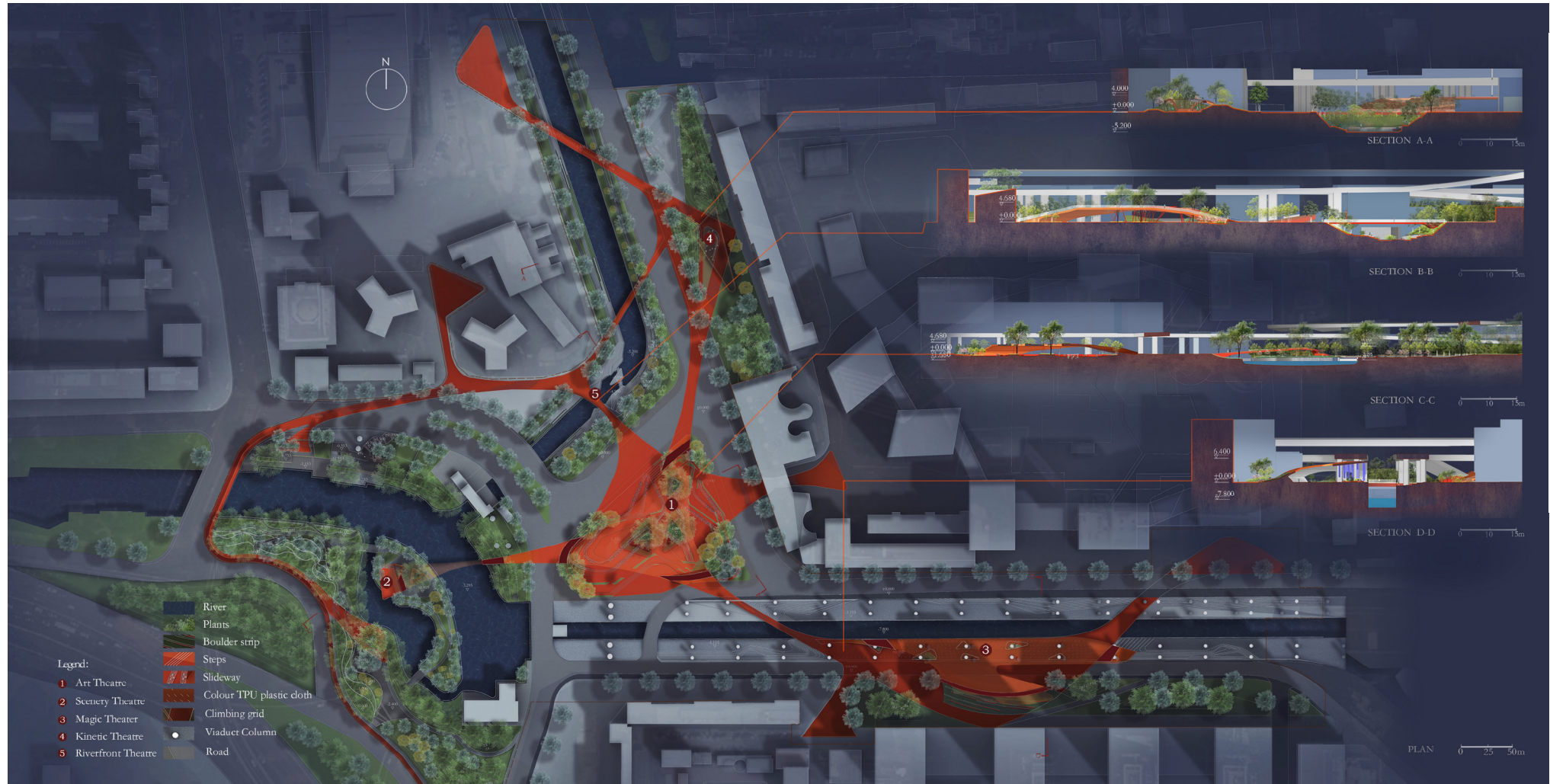
Written statement, short description of the project in English, no more than 250 words

This design is located in Beijing Dongzhimen Beiqiao under the Airport Expressway Bridge, in a multiple ‘boundary’ zone, where there are problems such as functional composite and single use, crowd stratification and spatial fragmentation. Based on the present dramatic space where activities are intertwined in time, the concept of ‘immersive theatre’ is proposed to build a ‘city theatre’ where groups of people watch each other's performances. Adopting the scattered multi-centre structure to break the site fragmentation; dividing the five functional theatres such as art and landscape; combining the sight line and the use law, strengthening the interaction of ‘seeing and being seen’ with the dramatic space, promoting the functional composite and the integration of the human flow, and activating the urban fringe space.

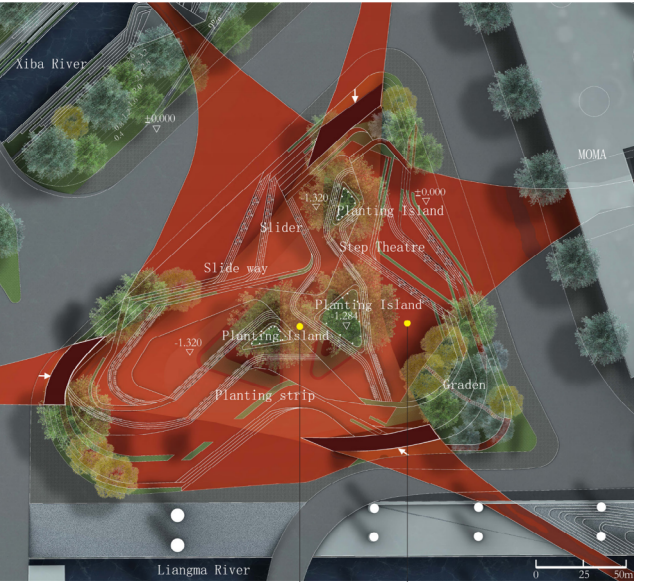
Barcelona International Landscape Biennial

Contact via email:
biennialadm@coac.net

Venue:
COAC - Col·legi Oficial d'Arquitectes de Catalunya
Carrer Arcs 1-3, 08002 Barcelona - Spain



NODE DESIGN



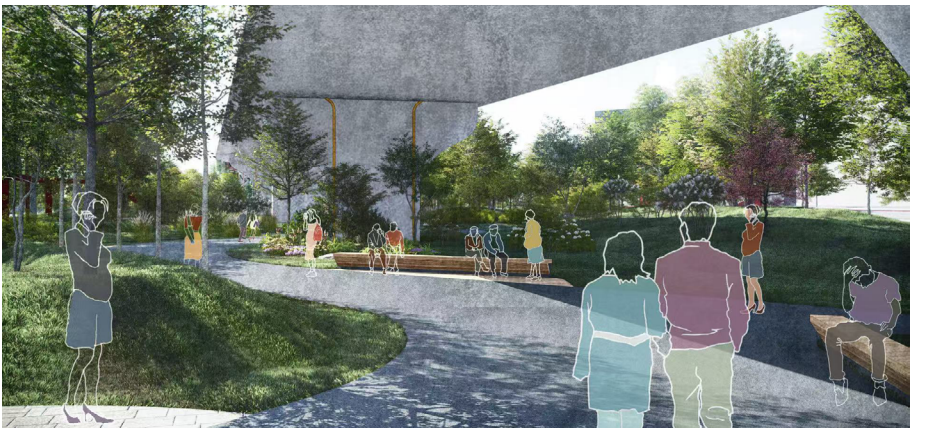
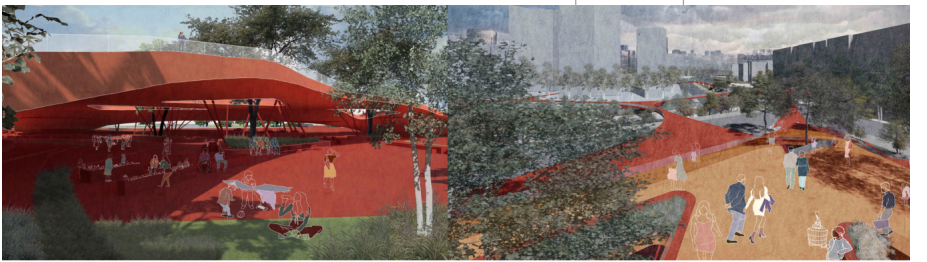
1 Art theatre

The theatre space in the center.

Space with multiple functions.

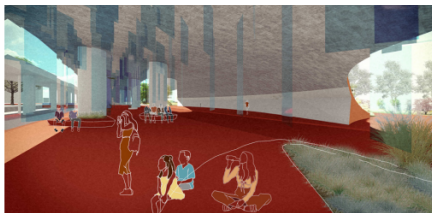
The upper level is used for sightseeing, bird walking and leisure.

The lower level design slideway can slide into the use platform of various activities, as a trading, chess and cards, watching performances.



5 Rainwater and Ecological Design

According to the drainage needs of the bridge, the rainwater pipes under the viaduct itself, which have the capacity to channel rainwater from the bridge deck, are coloured, and rainwater collection devices and rain gardens are set up at the bridge abutments.

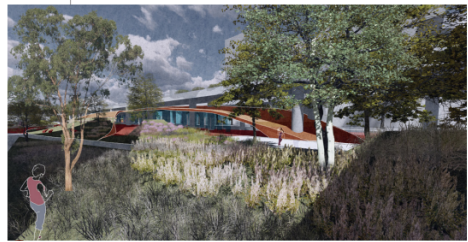
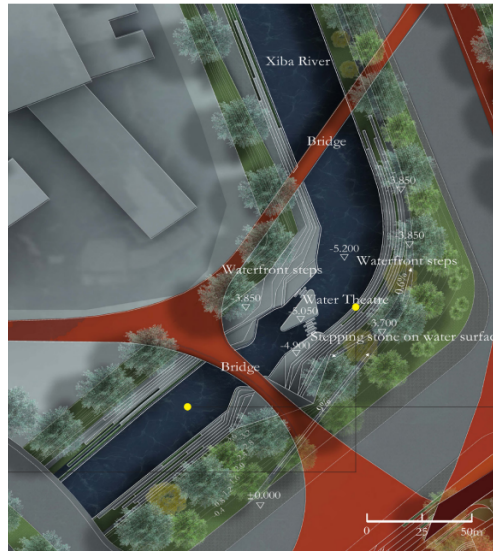
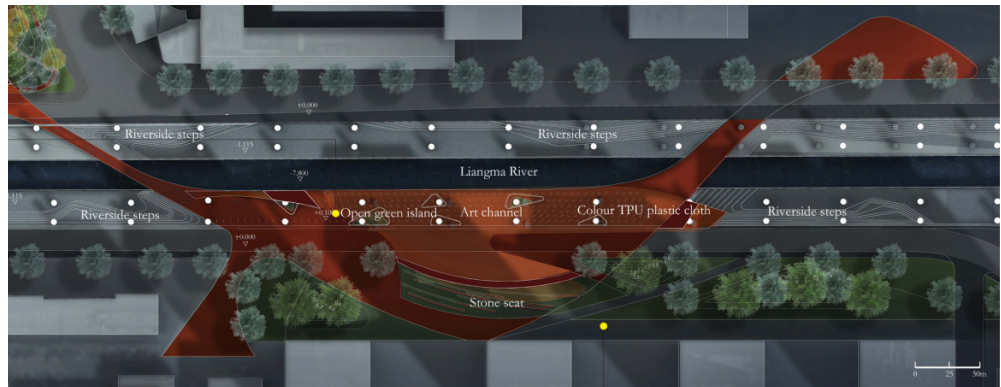


3 Magic theatre

Located on the easternmost side of the site.

The bulging roof under the bridge limits the space of the art gallery. Colour TPU plastic cloth is used to form the overlapping relationship between the reflection of color pipeline and color, which makes the visual effect look richer.

The bottom of the top uses reflective metal plates to solve the problem of "dark" space under the bridge. At the same time, the upheaval of the roof obscures the chaotic situation of the space under the bridge, forming a new MOMA line of sight relationship.



4 Magic theatre

Restoring the natural river landscape of Xiba River Water purification as the theme. Designing a Water theatre Forming a new relationship of "seeing and being seen" between on and under bridges there are different ways of using it in different seasons.



2 Scenery Theater

Located at the westernmost of the site.

Combining the current situation of the moat park landscape.

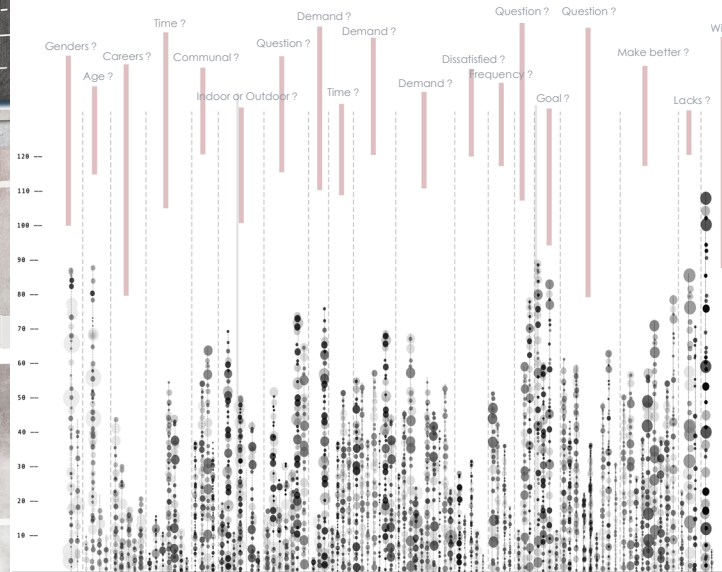
Installation of three viewing platforms and walkways in order to be able to see the different beautiful scenery in the venue.

Theatre in lake island were raised to form commercial space.

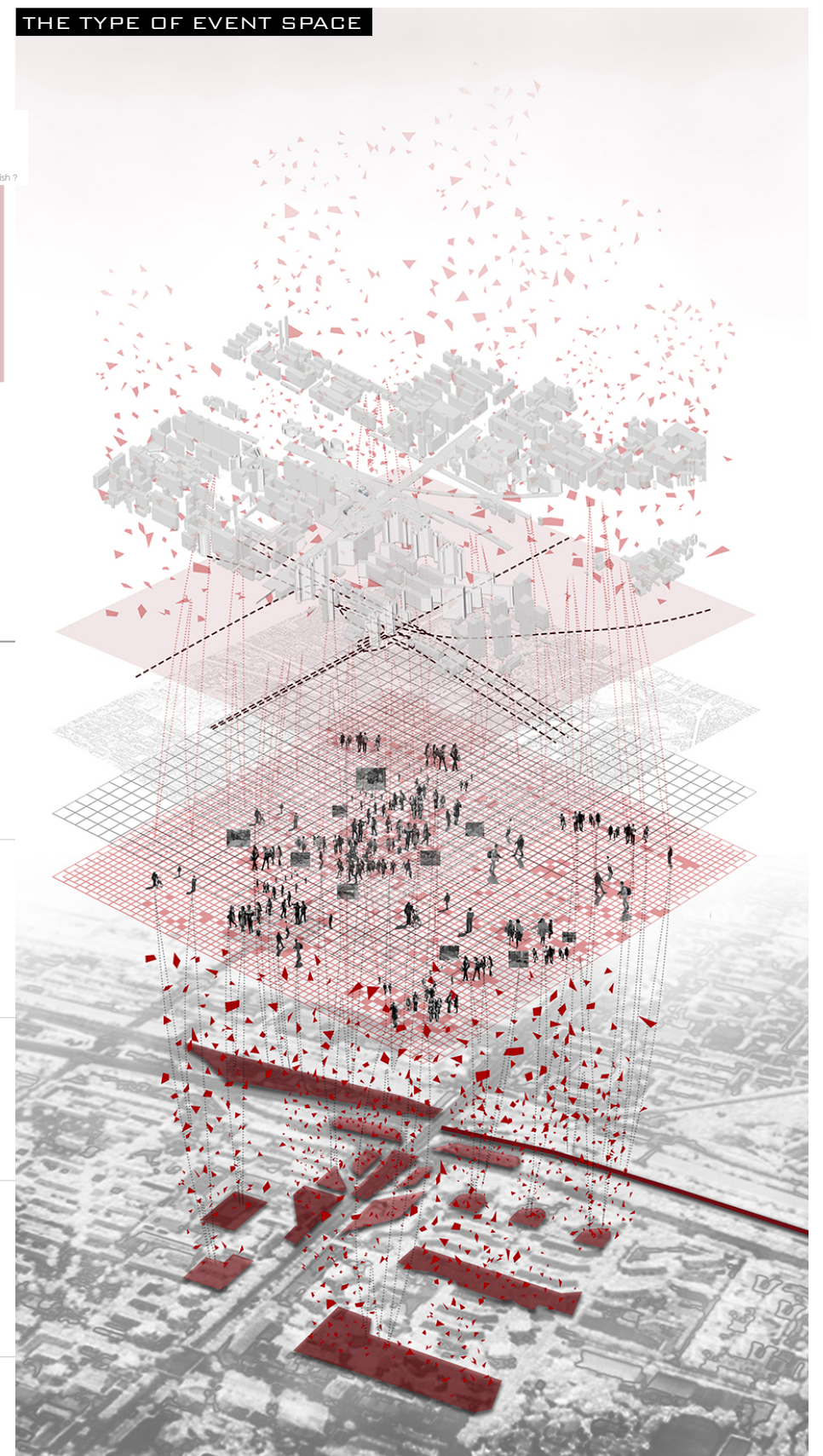




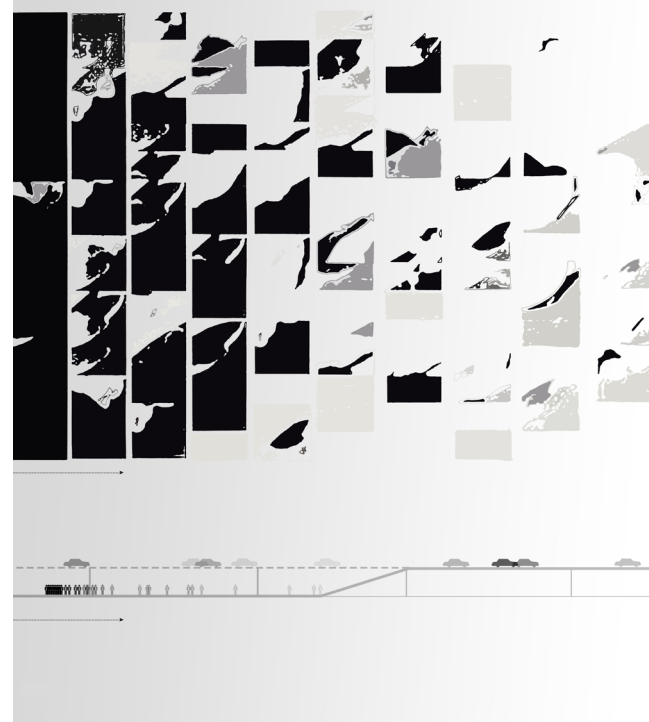
PUBLIC SURVEY QUESTIONNAIRE



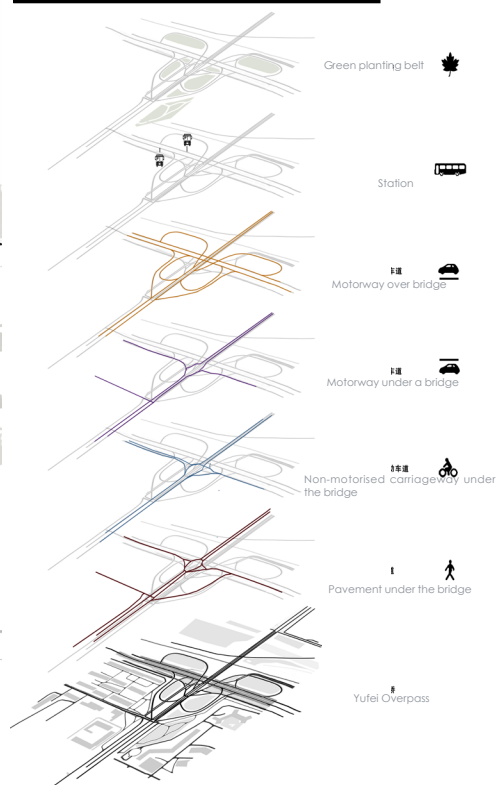
THE TYPE OF EVENT SPACE



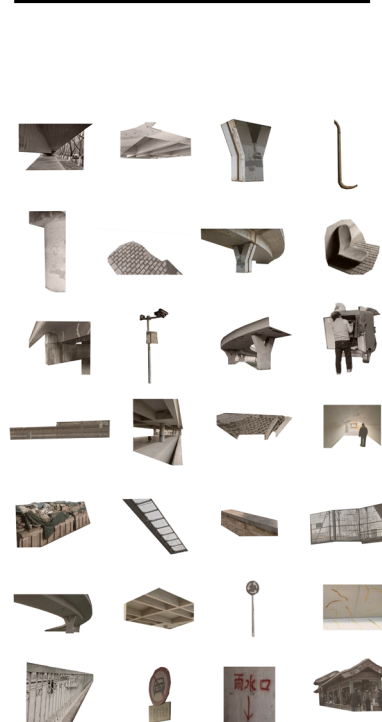
HOTSPOTS FOR FOOT TRAFFIC



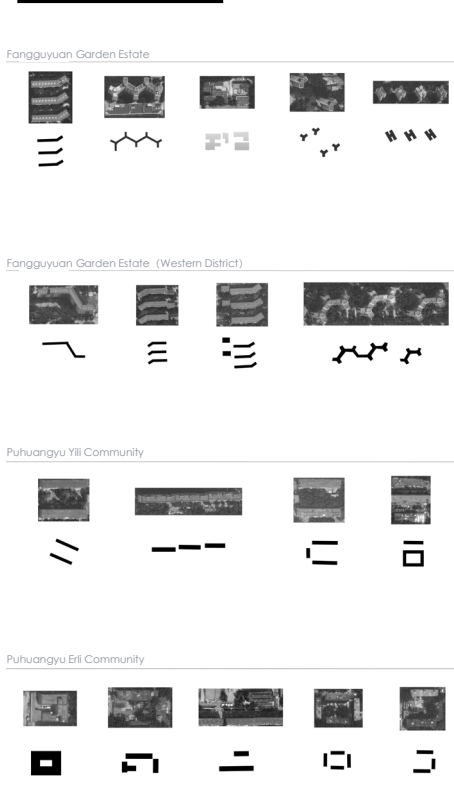
TRAFFIC ANALYSIS MAP



SPATIAL IMPRESSIONS



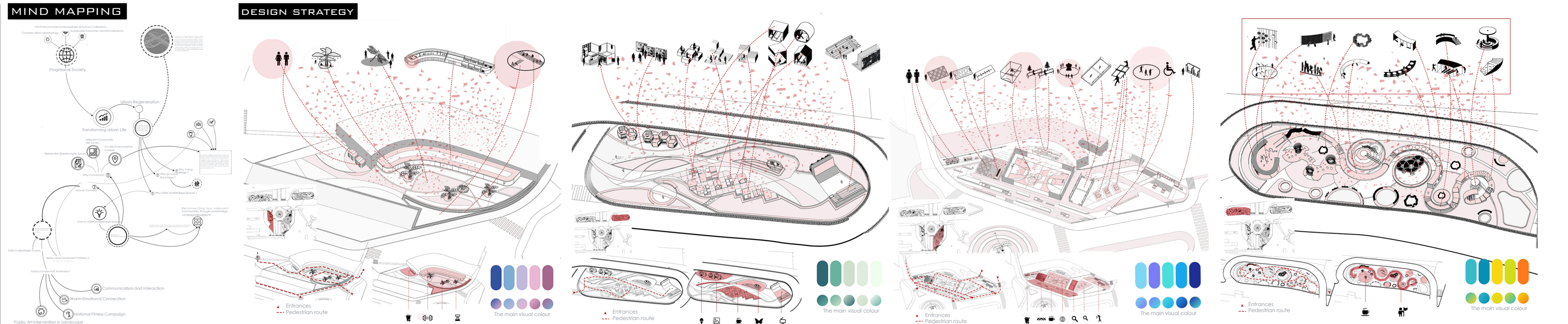
SPACE TYPE



Country/City
 University / School
 Academic year
 Title of the project
 Authors

Beijing
 Central Academy of Fine Arts
 2022
 Activating Space - Connecting Communities - Landscape Renewal Design for Underneath the Yufeng Bridge and Subsidiary Spaces
 Zhu Keyun

Title of the project	Activating Space - Connecting Communities - Landscape Renewal Design for Underneath the Yufeng Bridge and Subsidiary Spaces
Authors	Zhu Keyun
Title of the course	Landscape Renewal under the Second Ring Road Viaduct and Adjacent Spaces in Beijing
Academic year	2022
Teaching Staff	Hou Xiaolei
Department / Section / Program of belonging	Department of Landscape Architecture, School of Architecture
University / School	Central Academy of Fine Arts



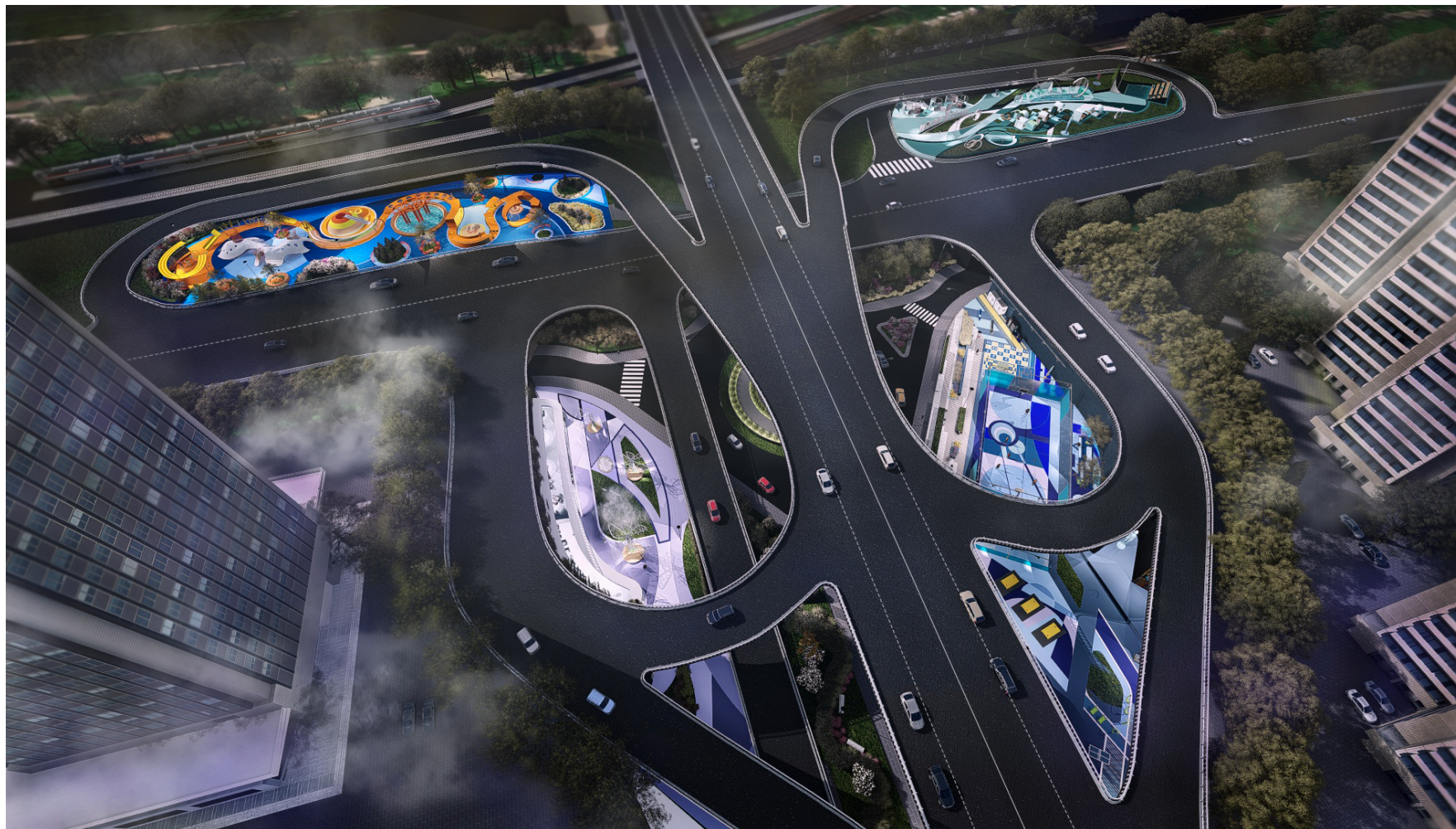
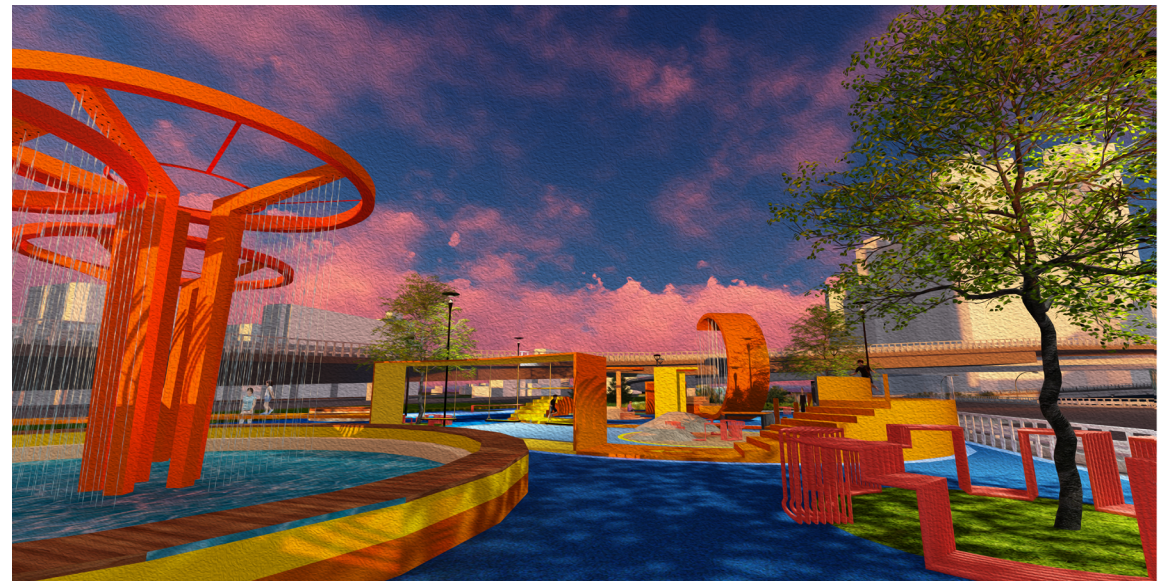
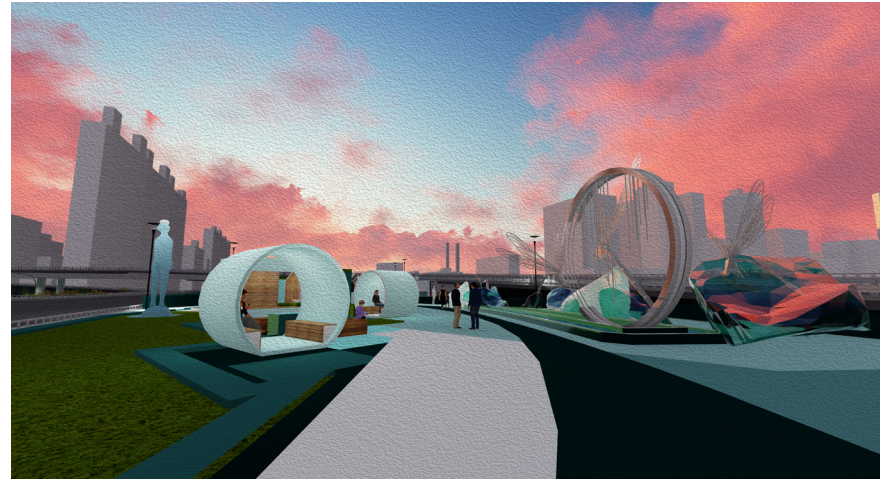
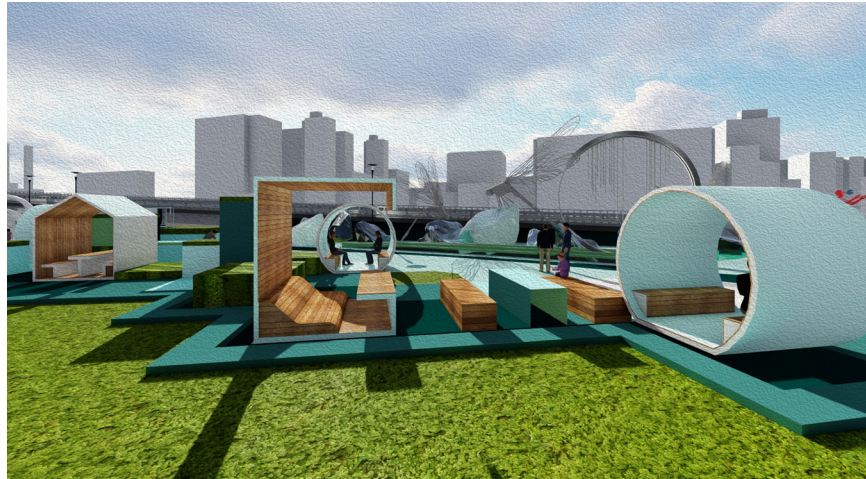
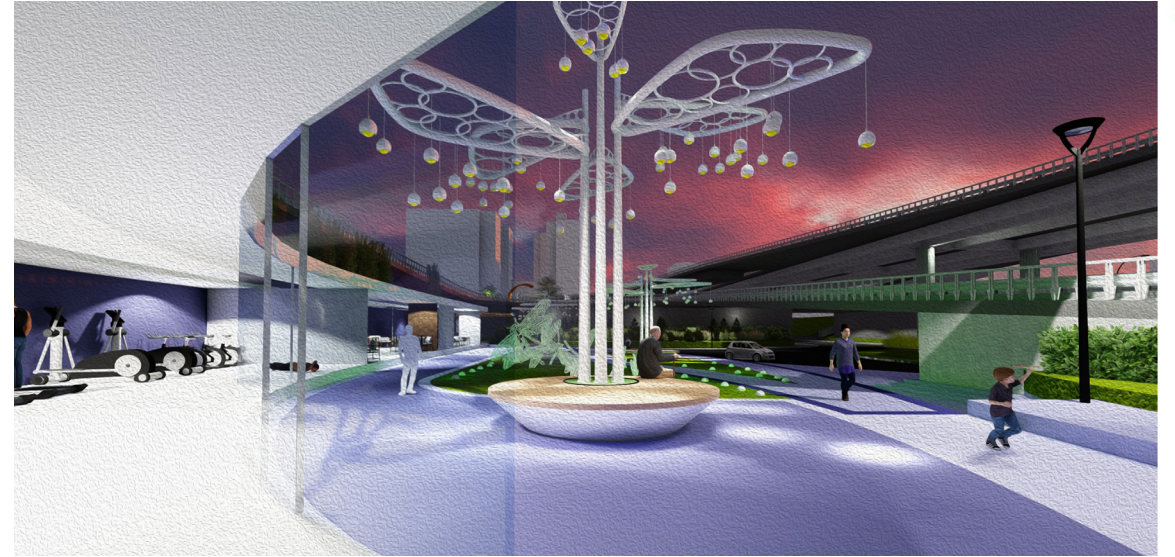
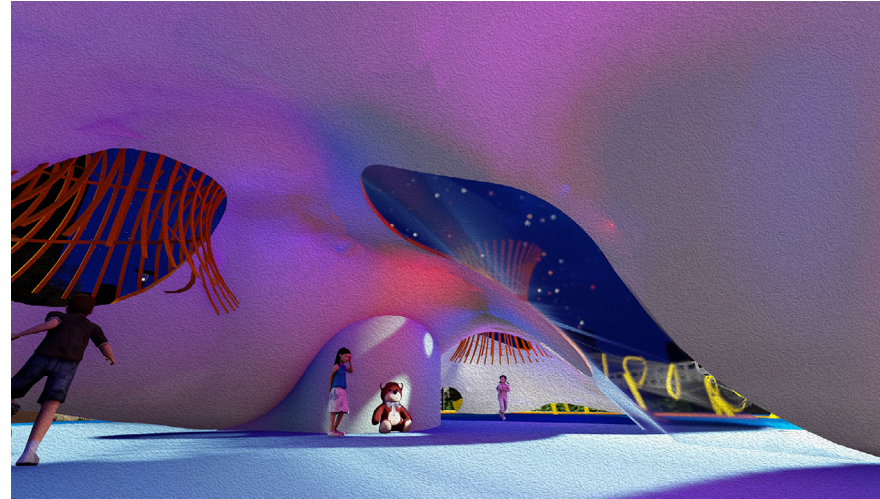
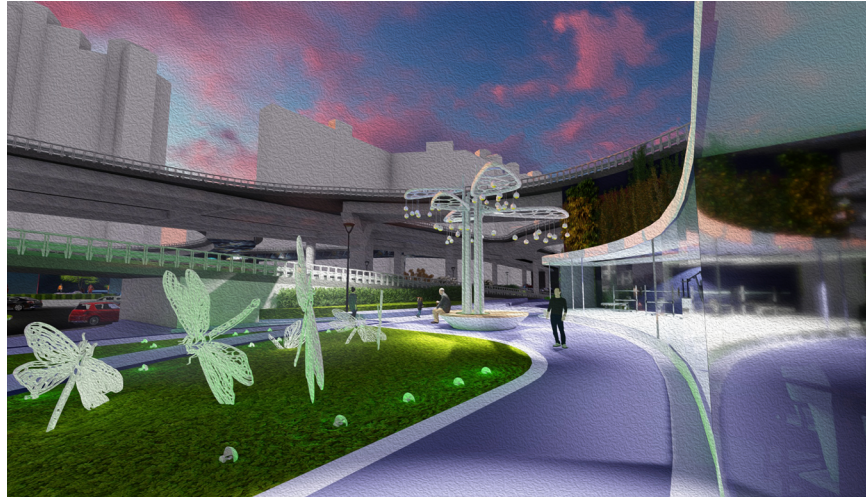
Written statement, short description of the project in English, no more than 250 words

Aiming at the problem of the large amount of unused space under the Yufeng Bridge and the physical isolation of the surrounding community, this design aims to 'activate the space and connect the community' to create a multifunctional sharing place for all ages. By implanting creative retail, public art display and other functions, the leisure plaza is constructed for community activities, making it a catalyst for social recreation and outdoor activities; the activity space for the elderly is transformed into an entertainment supermarket, providing a space for fitness and chess and cards that is not affected by the weather; the site is strung with linear ribbons, and the urban play landscape is designed to be both challenging and interesting, and the functional platforms are differentiated to strengthen the spatial The project aims to reshape the vitality of the space under the bridge. The project aims to reshape the vitality of the space under the bridge, make up for the shortcomings of the area's functions, form a city-level non-traditional community sharing space, and become a new landmark for community activities in Yufengqiao.

Barcelona International Landscape Biennial

Contact via email:
biennaladm@coac.net

Venue:
COAC - Col·legi Oficial d'Arquitectes de Catalunya
Carrer Arcs 1-3, 08002 Barcelona - Spain



Title of the project	Spatial Reconstruction - Historical Overlay — Landscape Renewal Design for the Underbridge and Subsidiary Spaces of Deshengmen Bridge
Authors	Dong Wei
Title of the course	Landscape Renewal under the Second Ring Road Viaduct and Adjacent Spaces in Beijing
Academic year	2022
Teaching Staff	Hou Xiaolei
Department / Section / Program of belonging	Department of Landscape Architecture, School of Architecture
University / School	Central Academy of Fine Arts



PROGRAMME DERIVATION



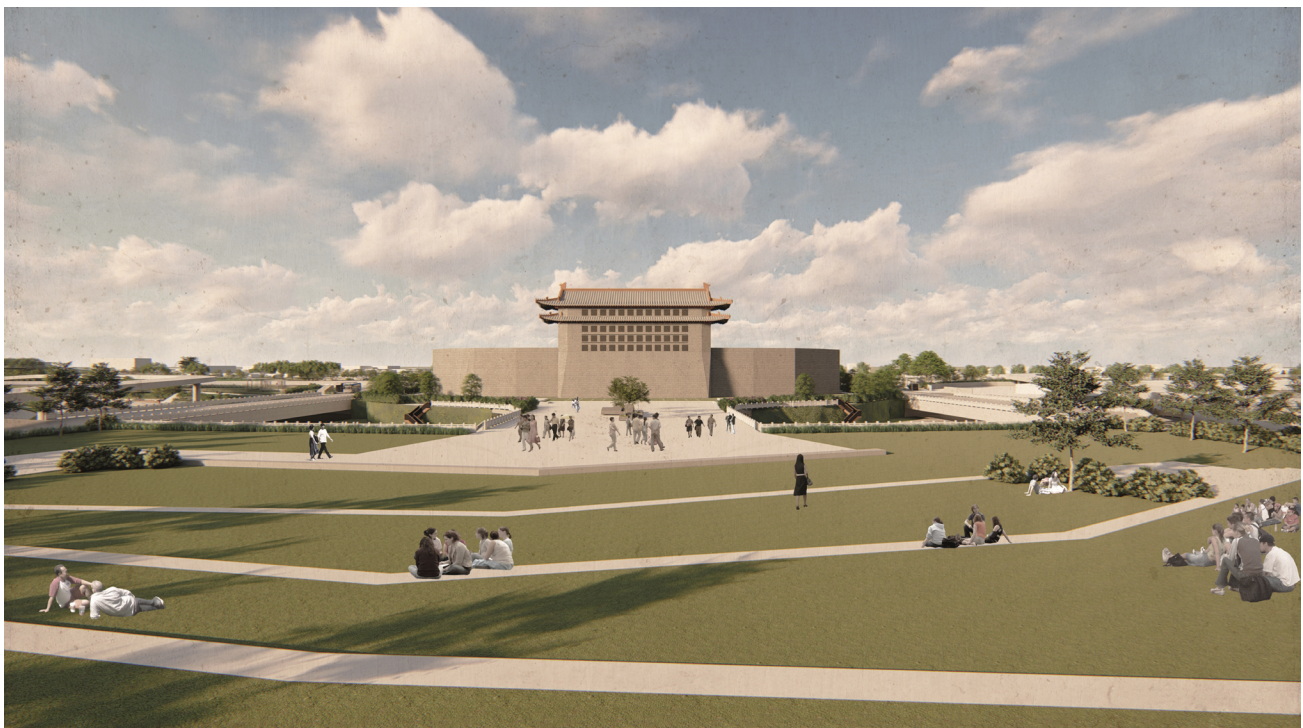
Written statement, short description of the project in English, no more than 250 words

As one of the nine gates in the inner city of Beijing, Deshengmen carries the historical connotation of ‘winning by virtue’ and the function of a transport hub, and the existing arrow tower is a precious historical relic. 21st century, after the completion of the Deshengmen Bridge, the arrow tower was surrounded by the expressway and was isolated in the urban space. In the face of the contradiction between urban development and historical and cultural protection, this design takes ‘continuation of historical lineage, integration of modern functions’ as the core, and starts from responding to the historical pattern, reconfiguring the slow-moving system, and creating the activity space, exploring the path of landscape renewal of the underbelly of De Sheng Men Bridge and the ancillary space, and striving to achieve the organic conservation of historical buildings and cultural inheritance, while promoting the modernisation of the cityscape. It aims to promote the modernisation of the cityscape while achieving the organic unity of the protection of historical buildings and cultural inheritance.

Barcelona International Landscape Biennial

Contact via email:
biennaladm@coac.net

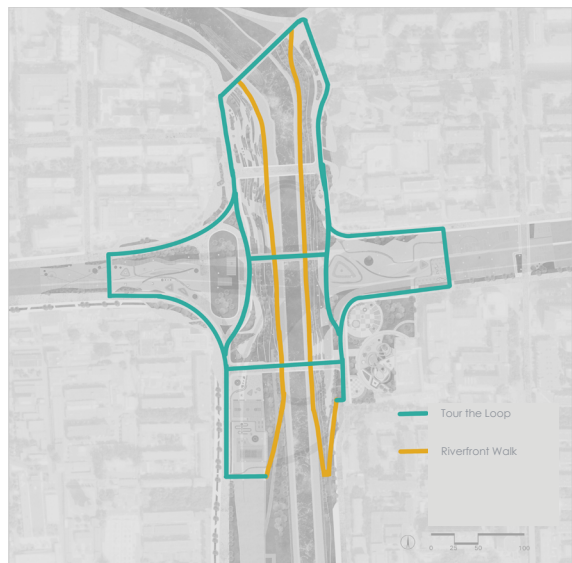
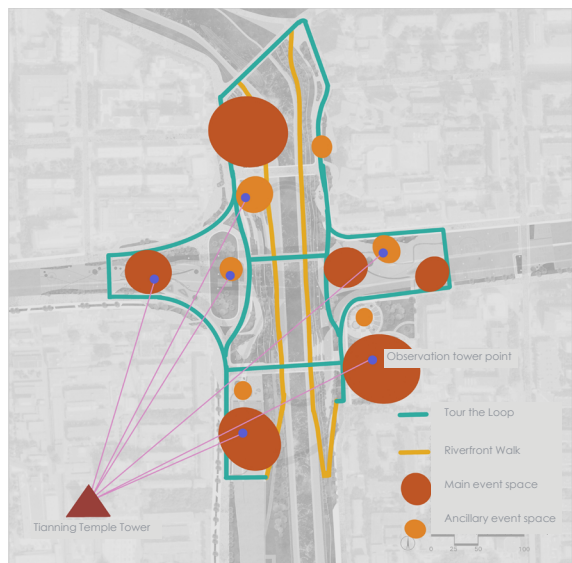
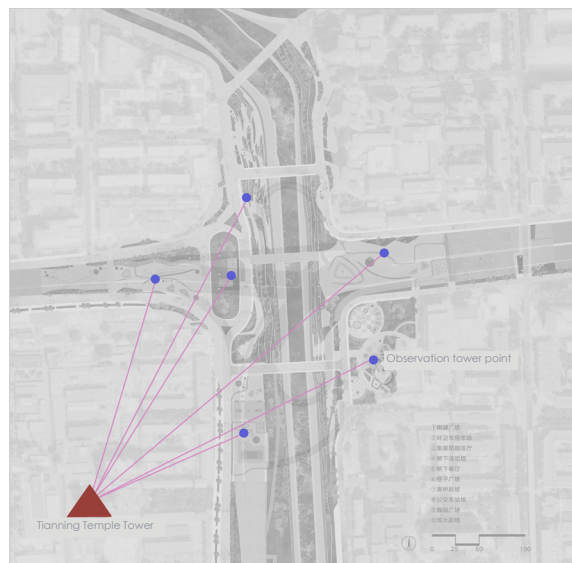
Venue:
COAC - Col·legi Oficial d'Arquitectes de Catalunya
Carrer Arcs 1-3, 08002 Barcelona - Spain



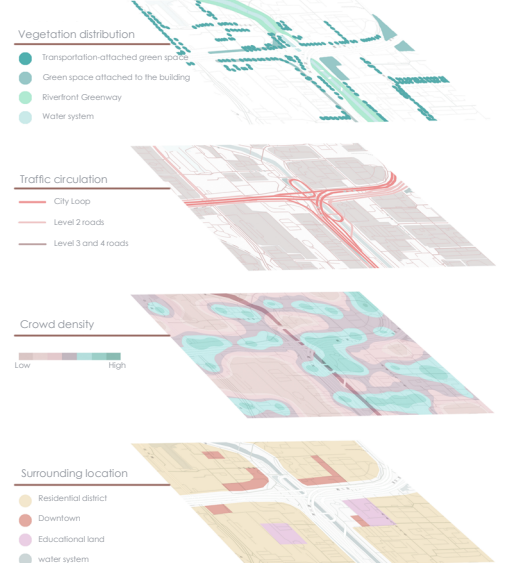


SPACE CINEMA • INTERPRETATION OF LIFE
——Tianning Temple Bridge under the bridge and ancillary space landscape renewal design

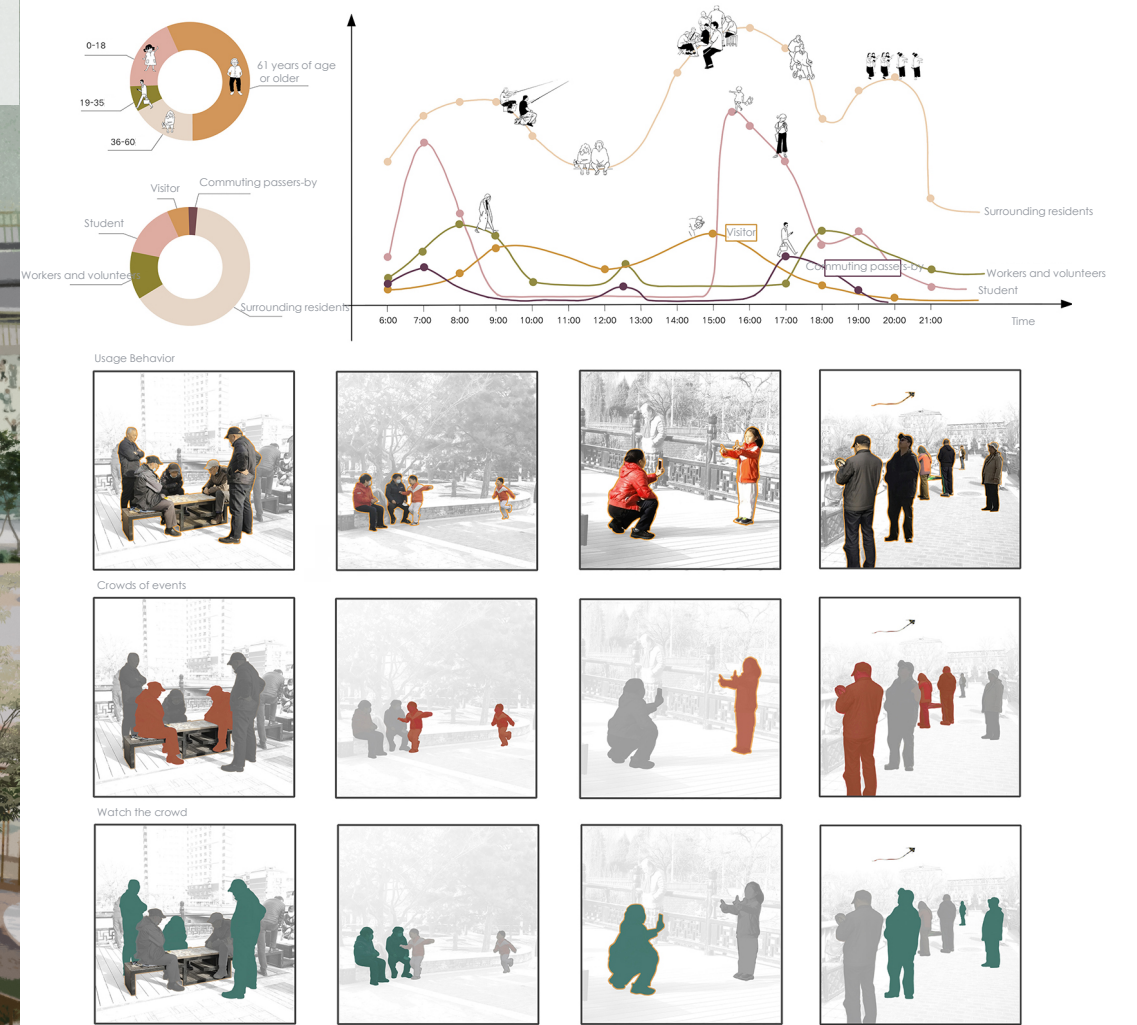
SITE ANALYSIS



NEIGHBOURHOOD STATUS



CROWD ANALYSIS



Country/City
University / School
Academic year
Title of the project
Authors

Beijing
Central Academy of Fine Arts
2022
Space Cinema • Interpretation of Life——Tianning Temple Bridge under the bridge and ancillary space landscape renewal design
Cui Binqian

Title of the project	Space Cinema • Interpretation of Life——Tianning Temple Bridge under the bridge and ancillary space landscape renewal design
Authors	Cui Binqian
Title of the course	Landscape Renewal under the Second Ring Road Viaduct and Adjacent Spaces in Beijing
Academic year	2022
Teaching Staff	Hou Xiaolei
Department / Section / Program of belonging	Department of Landscape Architecture, School of Architecture
University / School	Central Academy of Fine Arts



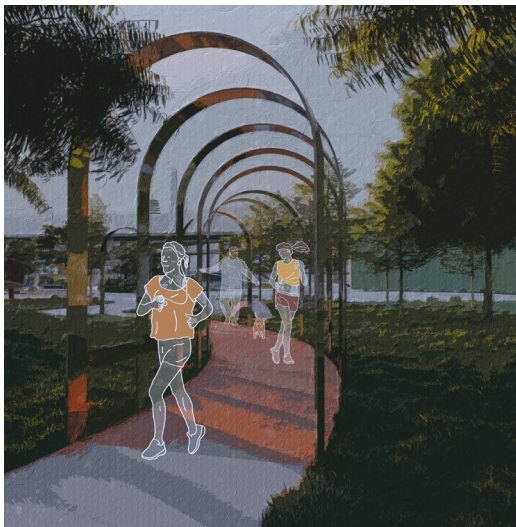
Written statement, short description of the project in English, no more than 250 words

In the context of urban renewal, the revitalisation of negative spaces under bridges is an important direction to stimulate urban vitality. As a characteristic viaduct of Beijing's Second Ring Road, Tianning Temple Bridge has a complex structure of under-bridge and ancillary spaces. Based on the spatial characteristics and the needs of the surrounding land and people, this design explores the interactive relationship between 'watching and being watched', and builds an urban 'living theatre' where residents are both participants in activities and viewers of each other. Through in-depth analysis of existing problems and crowd habits, the design proposes targeted improvement measures to create an overall flow that combines motion and static, mobilises multi-sensory experiences, strengthens residents' participation and interactivity, enhances the sense of identity and infectiousness of the site, and realises the transformation of a negative space into a vibrant public space.

Barcelona International Landscape Biennial

Contact via email:
biennaladm@coac.net

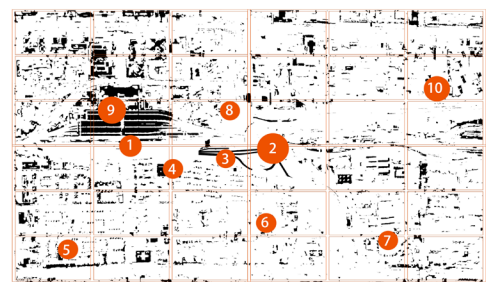
Venue:
COAC - Col·legi Oficial d'Arquitectes de Catalunya
Carrer Arcs 1-3, 08002 Barcelona - Spain



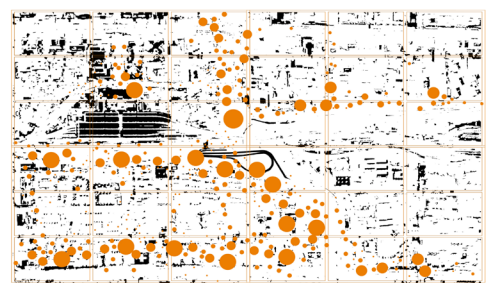


STITCHING SPACE · SHUTTLING HISTORY —Landscape Renewal Design of Dongbianmen Bridge and Ancillary Spaces

THE CURRENT SITUATION

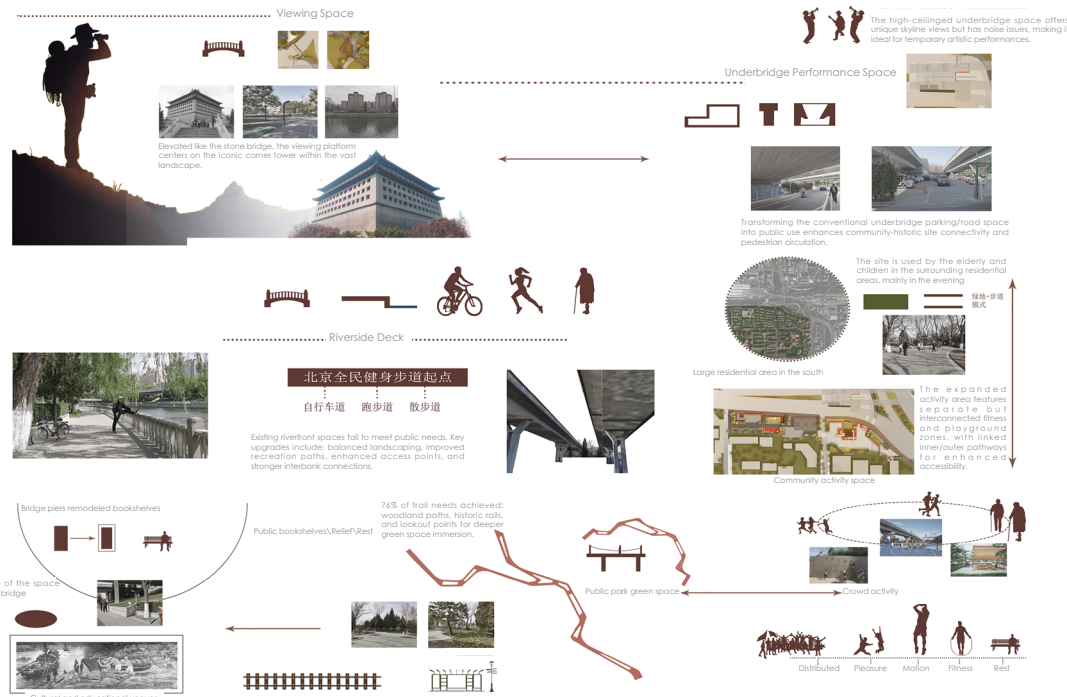


1. Ming City Wall Ruins Park 2. Jiaolu Yingguo Park
Street 3. Green Space 4/5/6/7. School 8. Grand Canal Dotted Area Site 9. Beijing Station 10. CBD Urban Forest Park

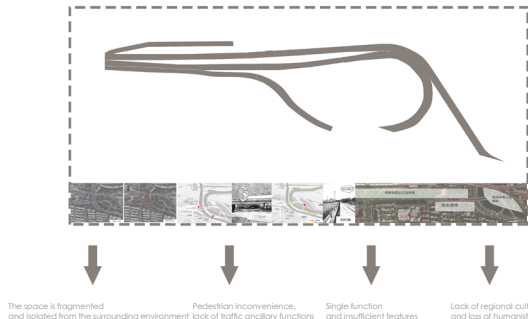


Neighbourhood crowd heat

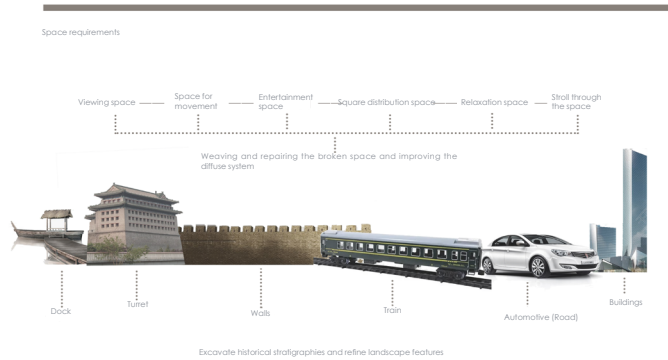
SITE ANALYSIS



EXISTING CHALLENGES



CONCEPTUAL DEVELOPMENT



Country/City
University / School
Academic year
Title of the project
Authors

Beijing
Central Academy of Fine Arts
2022
Stitching Space · Shutling History—Landscape Renewal Design of Dongbianmen Bridge and Ancillary Spaces
Zhang Siqin

Title of the project	Stitching Space · Shuttling History——Landscape Renewal Design of Dongbianmen Bridge and Ancillary Spaces
Authors	Zhang Siqin
Title of the course	Landscape Renewal under the Second Ring Road Viaduct and Adjacent Spaces in Beijing
Academic year	2022
Teaching Staff	Hou Xiaolei
Department / Section / Program of belonging	Department of Landscape Architecture, School of Architecture
University / School	Central Academy of Fine Arts



Written statement, short description of the project in English, no more than 250 words

In the renewal of urban public spaces, revitalizing the negative space under Dongbiamen Bridge in Beijing is crucial. Located near historical sites like the Dongbiamen Ruins and Ming City Wall, the area blends history and modernity but suffers from fragmentation, poor pedestrian access, and low utilization, limiting its potential.

Applying the theory of "ephemerality and co-temporality," this design uses a narrative approach to integrate the fragmented site and improve walkability by creating key nodes and a dual-path system. It also layers historical context into the space, combining modern functionality with cultural storytelling. This enhances the user experience, reactivates the site's vitality, and rebuilds collective memory, transforming it into a vibrant urban public space.

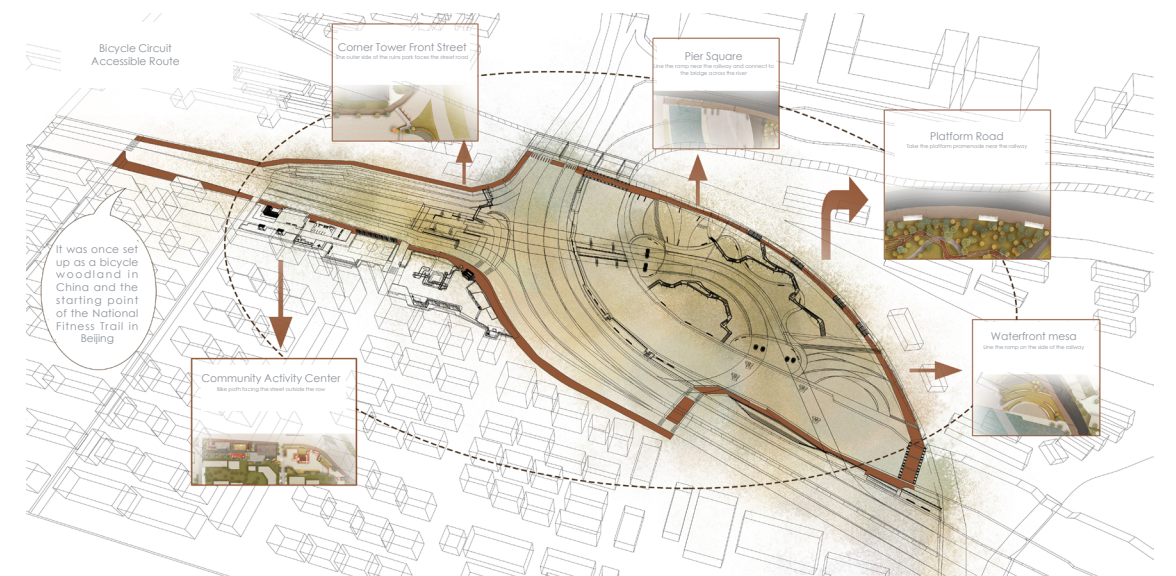
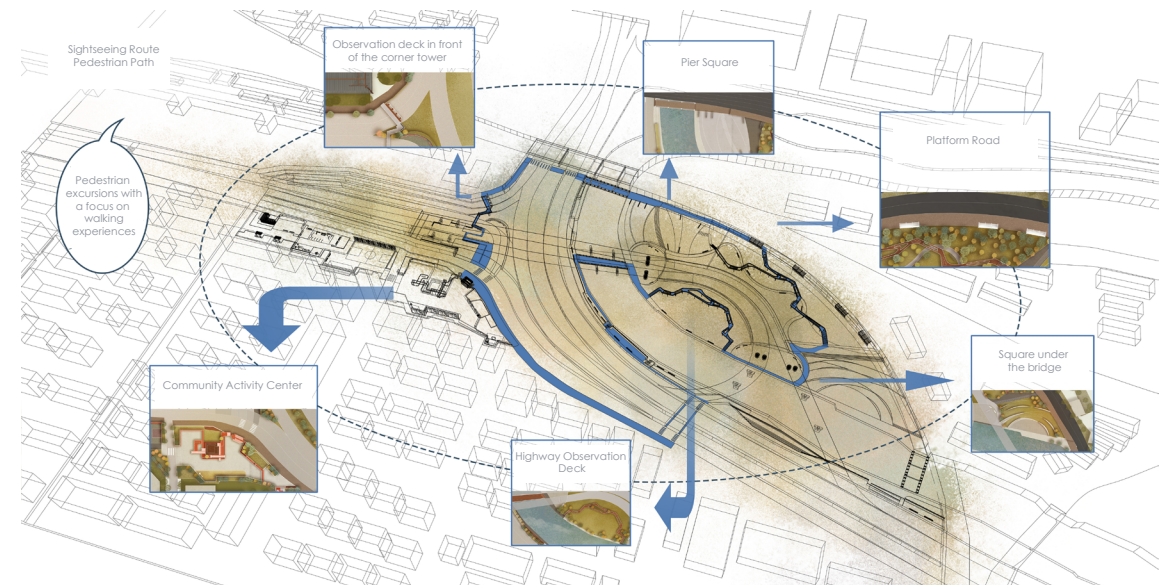
Barcelona International Landscape Biennial

Contact via email:
biennaladm@coac.net

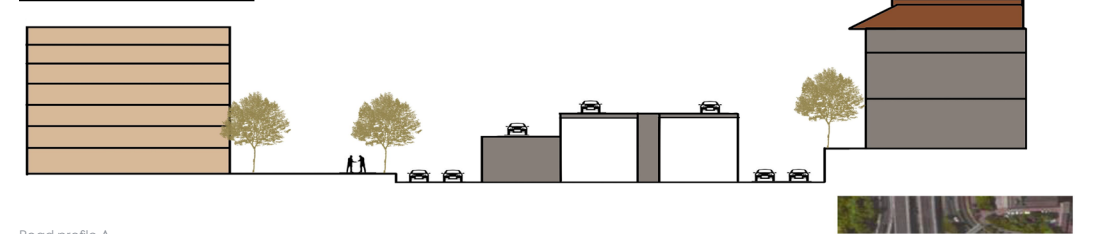
Venue:
COAC - Col·legi Oficial d'Arquitectes de Catalunya
Carrer Arcs 1-3, 08002 Barcelona - Spain



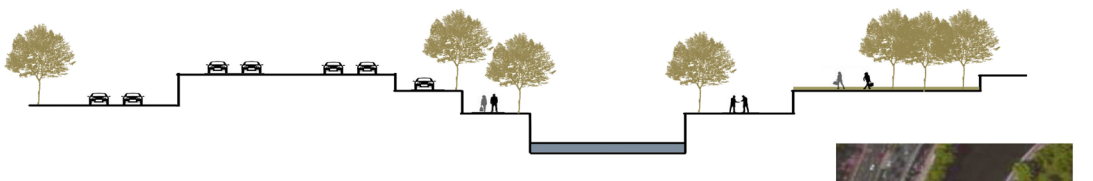
ROUTE ANALYSIS



SECTION VIEW



Road profile A



Road profile B