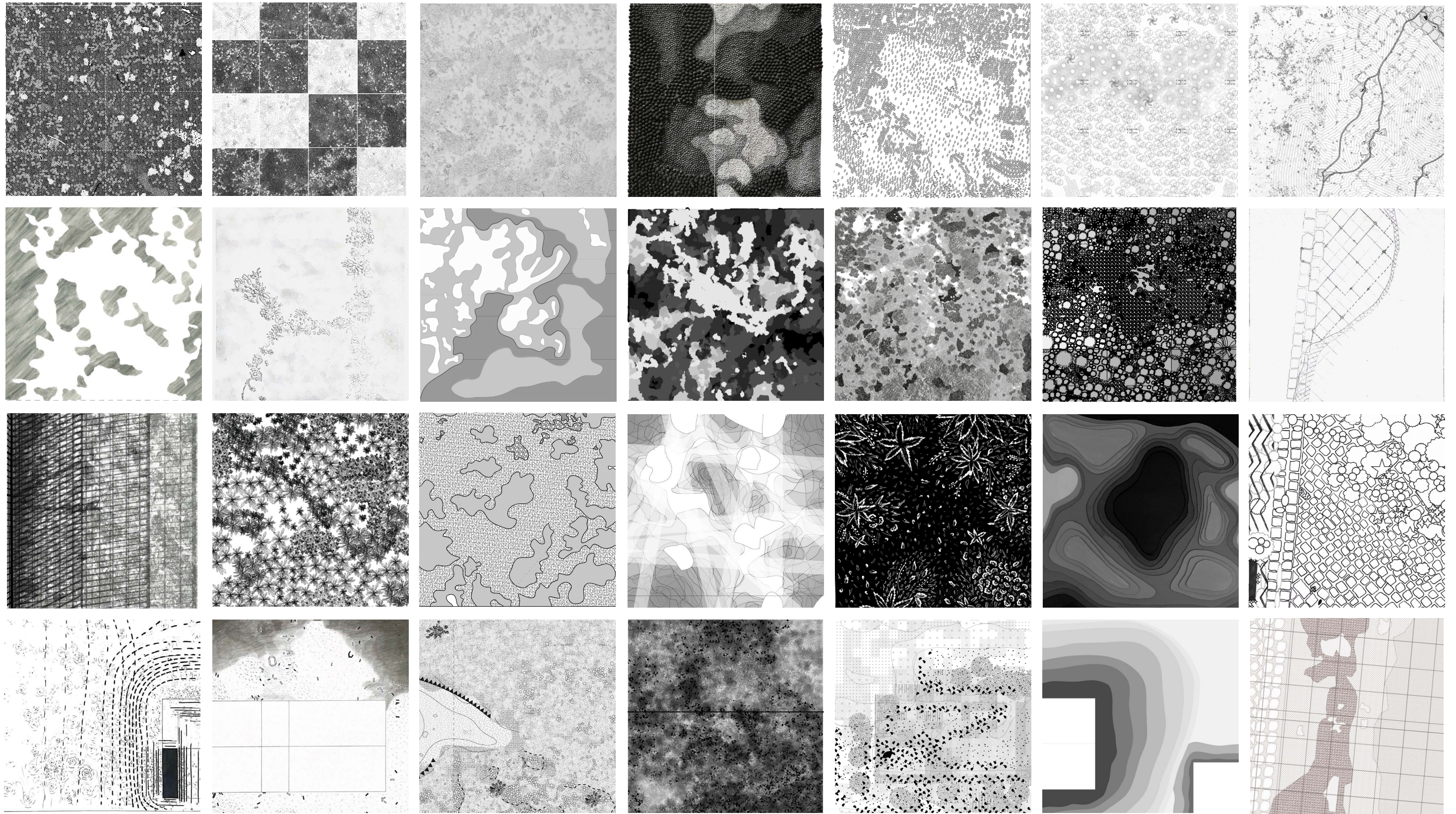




The Department of Architecture at Roma Tre University presents a selection of teaching experiences from its postgraduate programs, aimed to rethink nature in contemporary landscape architecture: rather than a collection of non-human elements, we mean it as a platform of behaviours and interactions arising from diverse life forms, intentions, and intelligences.

Beyond any traditional binaries such as natural/artificial and human/non-human, we recognize nature as the gathering of distributed and collective intelligence, and we mean landscape architecture as a respectful engagement with several intelligences across scales and species. Key features of the presented teaching experiences include: a cognitive approach to identifying and understanding visible and invisible intelligence (e.g. atmospheric or microscopic phenomena); multiscale thinking to recognize that global complexity can be accessed through local, minute interactions; temporal sensitivity to observe and interpret non-human agency and the evolution of interactions over time; 1:1 scale interventions to actually reveal, amplify or trigger new landscape dynamics, akin to seismography; varied representational methods, such as drawings, models, photography and film not just for communication, but also as tools for thought and action; addressing landscape architecture with the intent of negotiation between dynamic relationships, rather than solving problems.



▲ Collective recomposition of the individual parcels' observation plan. The collage is the expression of a diversity of actors and phenomena interplaying in the same landscape.

Country/City	Italy/Rome
University / School	Roma Tre University
Academic year	2023-2024 and 2024-2025
Title of the project	Landscape Observations and Interactions Studio
Authors	Alimelli M., Antommaria L., Aumonier M., Casas G., Ceglia G., Collalti C., Consiglio T., Della Torre M., De La Broise P., Di Stasi L., Del Signore S., Giustini V., Hasan Z., Lemme F., Moreira Giusti M., Moreno C., Nocchia F., Olmos L., Pasiecznik V., Perrazzino L., Rebi S., Salzano B., Sanchez N., Santini B., Steels O., Tatafiore A., Tuccini V., Valencia M., Vega L.F.

Title of the project	Landscape Observations and Interactions Studio
Authors	Students from the Roma Tre Dep. of Architecture and Dep. of FilCoSpe
Title of the course	Laboratorio di Osservazioni e Interazioni Paesaggistiche
Academic year	2023-2024 and 2024-2025
Teaching Staff	Annalisa Metta, Marco Ranzato, Margherita Autorino, Federco Brogginì, Valeria Volpe
Department / Section / Program of belonging	Department of Architecture, Department of Philosophy, Communication and Entertainment
University / School	Roma Tre University



Written statement, short description of the project in English, no more than 250 words

Landscape is never still. Everything, even what appears inert, is traversed and shaped by a continuous process that transforms, generates, regenerates and consumes it. Whatever the spatial and temporal scale, landscape is a vibrant matter that, perceptibly or not, is constantly changing. This awareness is useful to position oneself in relation to the contemporary condition of territories and environments. The course is therefore primarily an exploration that trains observation but also practical action. The graphic form that this exploration takes is that of a diary as a support that allows us to accumulate, analyse and return to all the stages of the process, from analysis to design and interaction. The aim of the course is therefore to investigate an urban landscape as a performative status, through various moments that structure the course: reconnaissance in landscape and urban literature, dialogues in the presence of authors; guided field observations, thanks to the insights of various experts; individual field activities, such as explorations (knowing how to see) and transformative actions (knowing how to interact with the dynamics at play), all recorded in a personal and systematic diary. The Landscape Observation and Interaction Workshop is an optional course launched in 2023 within the Department of Architecture at Roma Tre University, open to students from Architecture, Philosophy, Communication and Education Sciences. This is a new addition to the educational offering, as it is based on the fundamental premise of mixing disciplinary backgrounds, knowledge, tools and sensibilities that are applied to landscape issues.

Barcelona International Landscape Biennial

Contact via email:
biennialadm@coac.net

Venue:
COAC - Col·legi Oficial d'Arquitectes de Catalunya
Carrer Arcs 1-3, 08002 Barcelona - Spain



▲ The individual work of observation and interaction in this portion of the landscape is guided during the course by expert interventions in the open field (in the images on the right: the collective construction of the fields; entomological, botanical and pedological observation of life in the soil; the construction of an interaction), readings, discussions with the authors and systematic documentation in a personal diary (in the image on the left: the diary of Ludovica di Stasi's open field interaction, a.y. 2024-25).



▲ A tree stump is a vibrant realm; new holes in the trunk amplify the ongoing processes and generate new micro-scapes

Country/City	Italy, Rome
University / School	Roma Tre University
Academic year	2020-2021
Title of the project	De/Re-composition of a tree trunk
Authors	Annalisa Zegna



Title of the project	De/Re-composition of a tree trunk
Authors	Annalisa Zegna
Title of the course	Workshop “Effervescente Naturale” (Naturally sparkling)
Academic year	2020-2021
Teaching Staff	Annalisa Metta, with Mathieu Lucas as guest teacher
Department / Section / Program of belonging	Department of Architecture / II level Master in Performing Arts and Community Spaces
University / School	Roma Tre University

Written statement, short description of the project in English, no more than 250 words

The landscape is never still; it is a living environment that is constantly changing, with climate, geography and living beings all playing a part in shaping the world. This dynamic vision contrasts with the traditional idea of landscape as a fixed, picturesque scene inherited from European figurative culture, which has now been trivialized by an aesthetic of ‘green’ understood as a neutral backdrop. Therefore, it is crucial to consider how to design landscapes as living entities. The Effervescente Naturale (Naturally Sparkling) workshop, designed for the Performing Arts and Community Spaces (PACS) Master’s programme (2020), addressed this challenge. The approach involved observing micro-situations and questioning what was happening rather than how the place appeared. The resulting drawings were transcriptions of human and non-human choreographies, integrating relief, design, graphics and other media. Examples include the interplay of a meadow, a cat, and the Tiber River, or the intricate geography of rain on cobblestones. It is in these fragments and tiny landscapes that broader dynamics emerge, such as river humidity, sediments, and erosion: on the small scale one can understand the large scale. Students were asked to observe phenomena in progress, represent active dynamics and finally act by carrying out minimal interventions on a 1:1 scale to reveal and/or amplify these phenomena. One example concerns the changing landscape around a tree stump, representing the effects of rain, humidity, sun exposure and insect communities. The intervention involves making a series of holes in the stump to speed up transformative processes and encourage the arrival of new life forms.

Barcelona International Landscape Biennial

Contact via email:
biennialadm@coac.net

Venue:
COAC - Col·legi Oficial d’Arquitectes de Catalunya
Carrer Arcs 1-3, 08002 Barcelona - Spain



▲ The trunk/soil underground relation



The influence of sun exposure



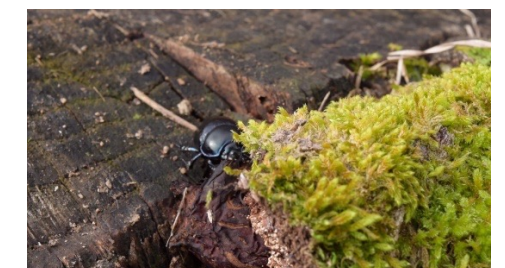
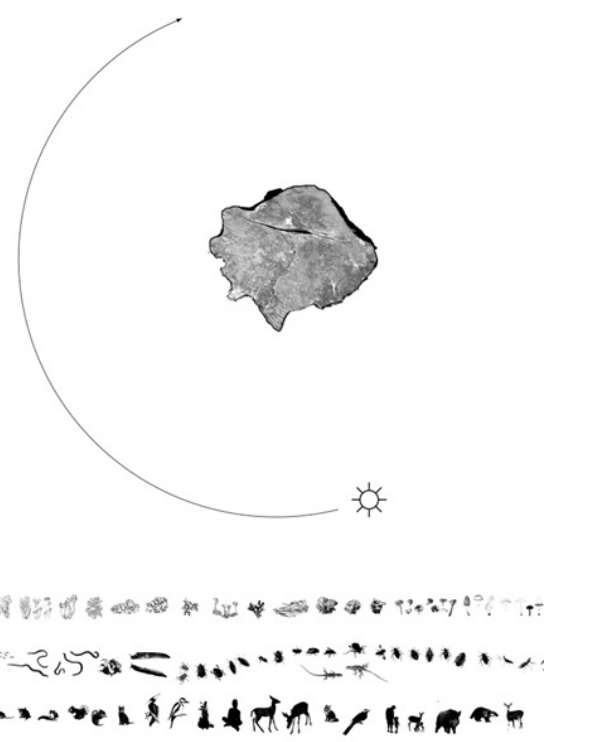
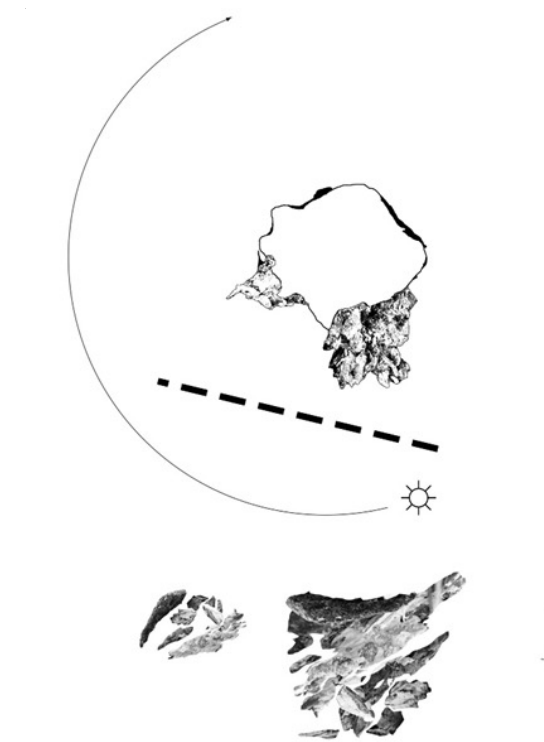
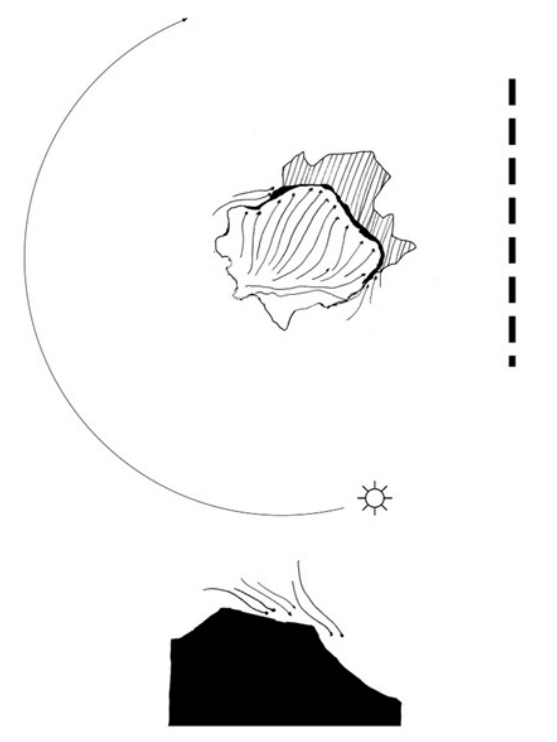
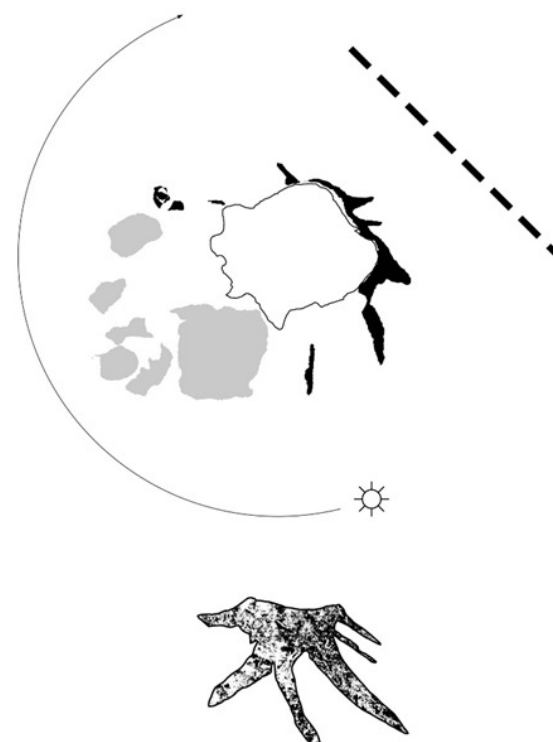
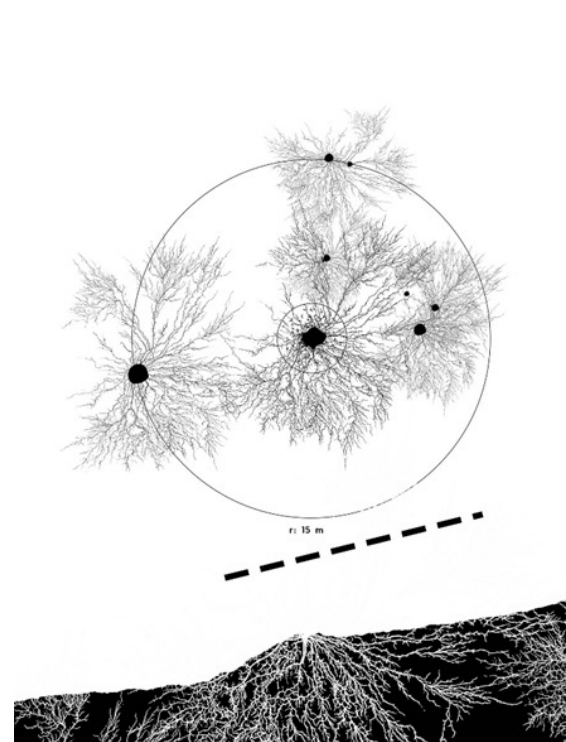
The influence of rain flow and humidity



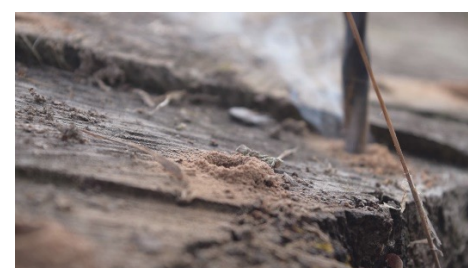
The influence of heat



Microorganisms and insects



▲ The found situation: the trunk as a vibrant realm



▲ Intervention: new holes in the trunk amplify the ongoing processes and create new choreographies



▲ A selection of images representing different moments of soil analysis during the workshop.

Country/City	Italy, Rome
University / School	Roma Tre University
Academic year	2023-2024
Title of the project	Mundus. Soil as wholeness
Authors	Eleonora Ambrosini, Emilio Bartolini, Marco Burrascano, Sara Corrado, Patrizia De Luca, Lorenzo Di Stefano, Cassandra Fontana, Caterina Laurenz,i Davide Lucia, Sofia Maccherozzi, Silvia Mascheroni, Carolina Pascali, Lidia Procaccia, Edoardo Quattrucci, Elisa Raimondo, Lucia Ruocco, Caterina Spadoni, Beatrice Tabacco



Title of the project	Mundus. Soil as wholeness
Authors	Eleonora Ambrosini, Emilio Bartolini, Marco Burrascano, Sara Corrado et al.
Title of the course	Elements #3: Earth / Module on the aesthetics of the territory
Academic year	2023-2024
Teaching Staff	Annalisa Metta, Federico Brogginì
Department / Section / Program of belonging	Department of Architecture, Department of Philosophy, Communication and Entertainment / Il level Master Course in Environmental Humanities
University / School	Roma Tre University

Written statement, short description of the project in English, no more than 250 words

The workshop “Mundus. Soil as a wholeness” refers to the myth of the founding of Rome when, according to Plutarch, Romulus dug a circular pit where new inhabitants, coming from diverse places, deposited “the first fruits of all the things they used, those beautiful by tradition and those necessary by nature. Each of them threw a handful of earth taken from the place where they came from and mixed it together. They called this pit mundus, that is, by the same name they called the sky”. Taking inspiration from the myth and its interpretations, the workshop activity explores, through theoretical seminars on landscape architecture and practical applications, the multiple meanings of mundus, whose ambiguity – encompassing soil and air, earth and sky, nature and culture, here and elsewhere – is useful for verifying the impossibility of describing and creating the world through separate categories and elements. The participants are asked to bring 2 kg of soil collected from their places of origin, preferably in transparent glass jars. The different soils are analysed based on their grain size, texture, colour, pH level, temperature, moisture content, and material composition. Touching the soil with your hands and feeling it allows you to grasp its extreme heterogeneity. It reminds that, as the myth of mundus tells us, the soil is a place of encounter and synthesis, where seemingly opposite things become a single complex, active and reactive entity, not necessarily pacified — a world in itself.

Barcelona International Landscape Biennial

Contact via email:
biennialadm@coac.net

Venue:
COAC - Col·legi Oficial d'Arquitectes de Catalunya
Carrer Arcs 1-3, 08002 Barcelona - Spain



▲ A selection of soil analysis sheets from participants from different Italian regions completed during the workshop.



▲ The analysis sequence carried out during the workshop, which included an examination of grain size, texture, colour, pH level, temperature, moisture content and material composition.



▲ Observation of an urban disruption: interaction between human agency and the broken tactile paving

Country/City	Italy, Rome
University / School	Roma Tre University
Academic year	2024-2025
Title of the project	Cecity
Authors	Marta Bevilacqua, Tommaso Consiglio, Chiara D'Emilio, Francesco Lemme, Matej Nozina

Title of the project	Cecity
Authors	Marta Bevilacqua, Tommaso Consiglio, Chiara D'Emilio, Francesco Lemme, Matej Nozina
Title of the course	Rotturaforma [Critique of the Urban]
Academic year	2024-2025
Teaching Staff	Diana Barrera, Federico Marchese, Ilaria Maurelli, Marco Ranzato, Riccardo Ruggieri
Department / Section / Program of belonging	Department of Architecture
University / School	Roma Tre University



Written statement, short description of the project in English, no more than 250 words

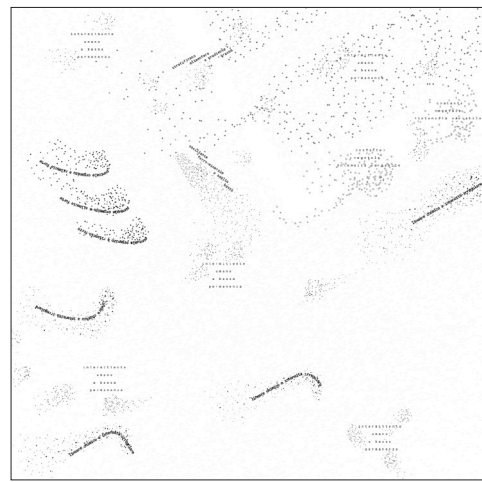
As a functional to current development, it offers eccentric perspectives. It is a heuristic device, a 'transformative place' that opens up new ways of being and living. The abrupt flooding of water, the protection from the cold due to the heat being off, the resort to fire for light because of the electricity being cut off, and so on. Disruption accelerates the changes that global warming data and forecasts indicate will occur during our lifetime. It is a space within which a paradigm shift can occur.

The first part of the course is devoted to familiarising participants with urban disruption. Working in groups, participants examine an urban disruption in Rome, redrawing it to illustrate the collapse and the forces that caused it, its repercussions on the territory, the underlying and/or supporting interdependencies, and the human and non-human practices it supports. Each disruption is placed back into the context of local, regional, supra-regional and planetary geography according to the relationships that the territory had before the collapse. The second part of the course is devoted to modification, i.e. developing a relationship with disruption through inhabiting, repairing, simulating, inducing or amplifying it.

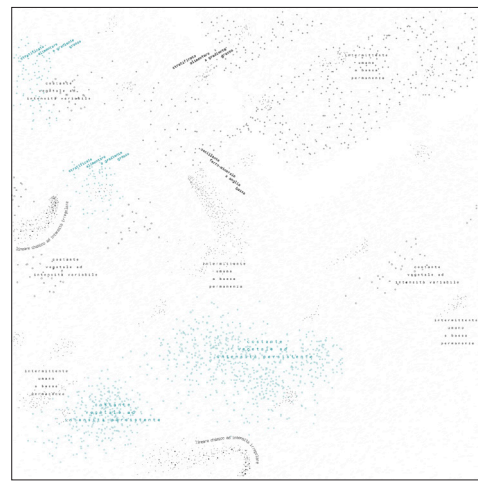
Barcelona International Landscape Biennial

Contact via email:
biennialadm@coac.net

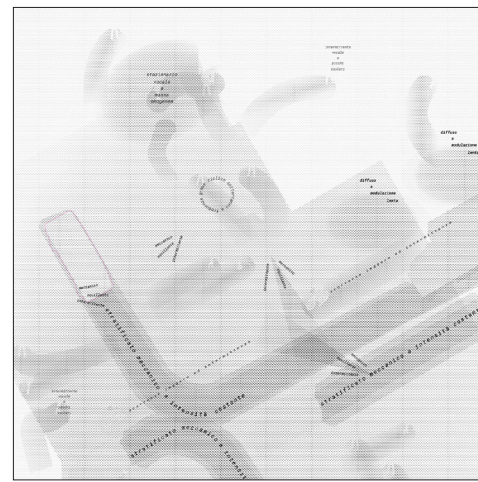
Venue:
COAC - Col·legi Oficial d'Arquitectes de Catalunya
Carrer Arcs 1-3, 08002 Barcelona - Spain



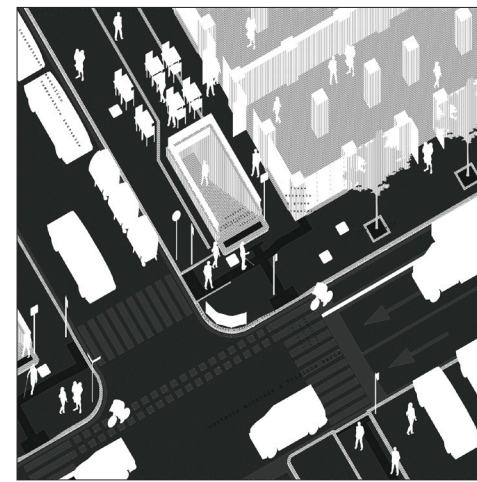
▲ smell map



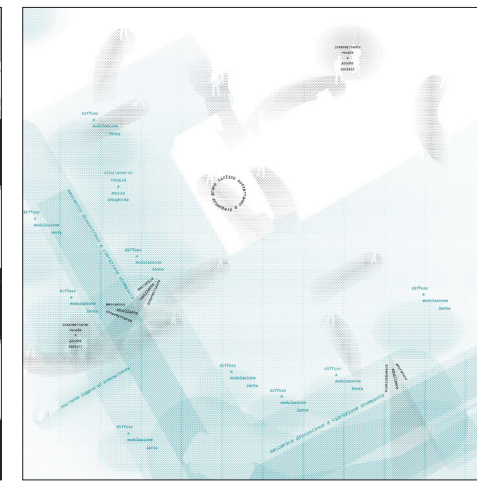
noise map



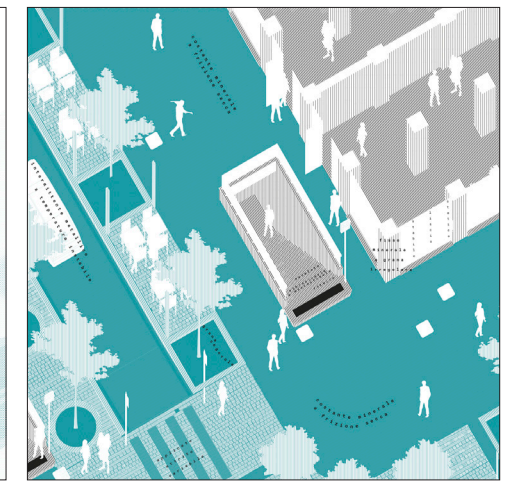
tactile map



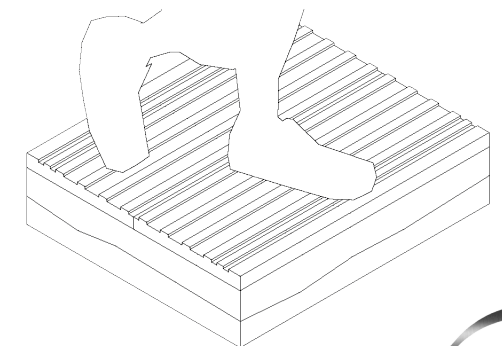
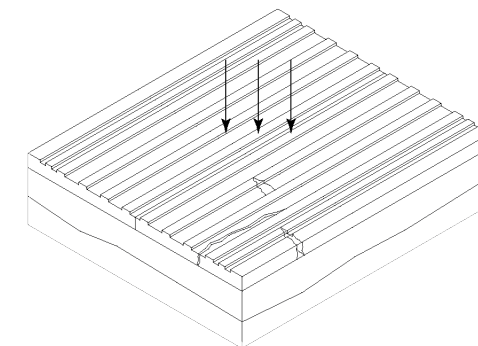
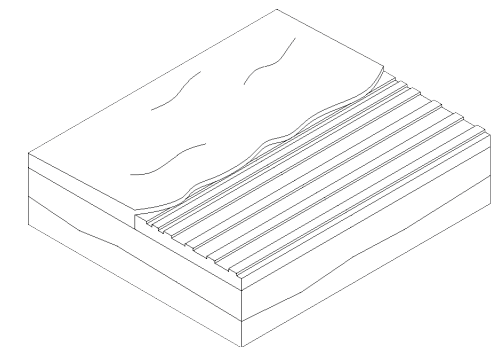
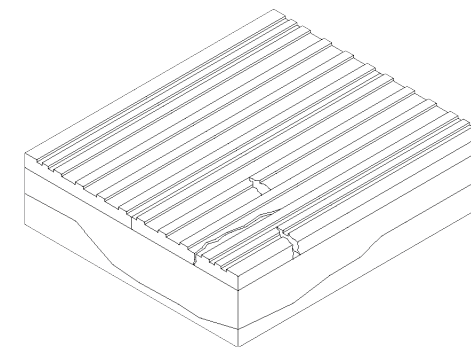
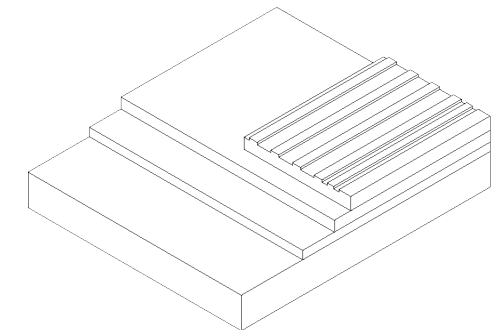
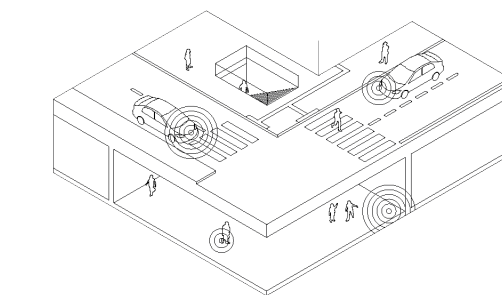
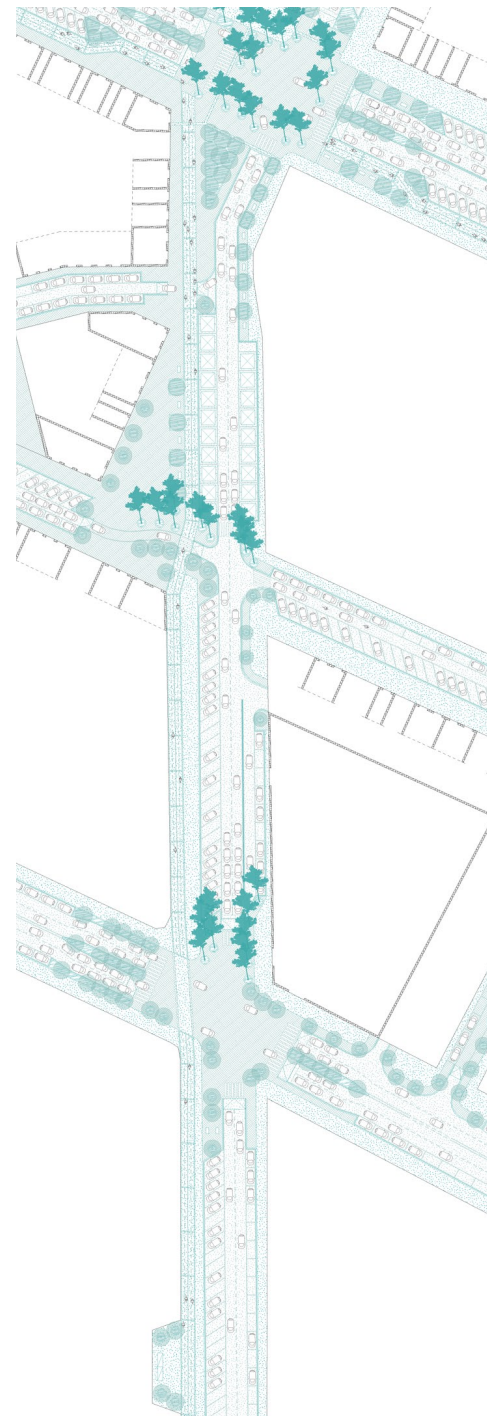
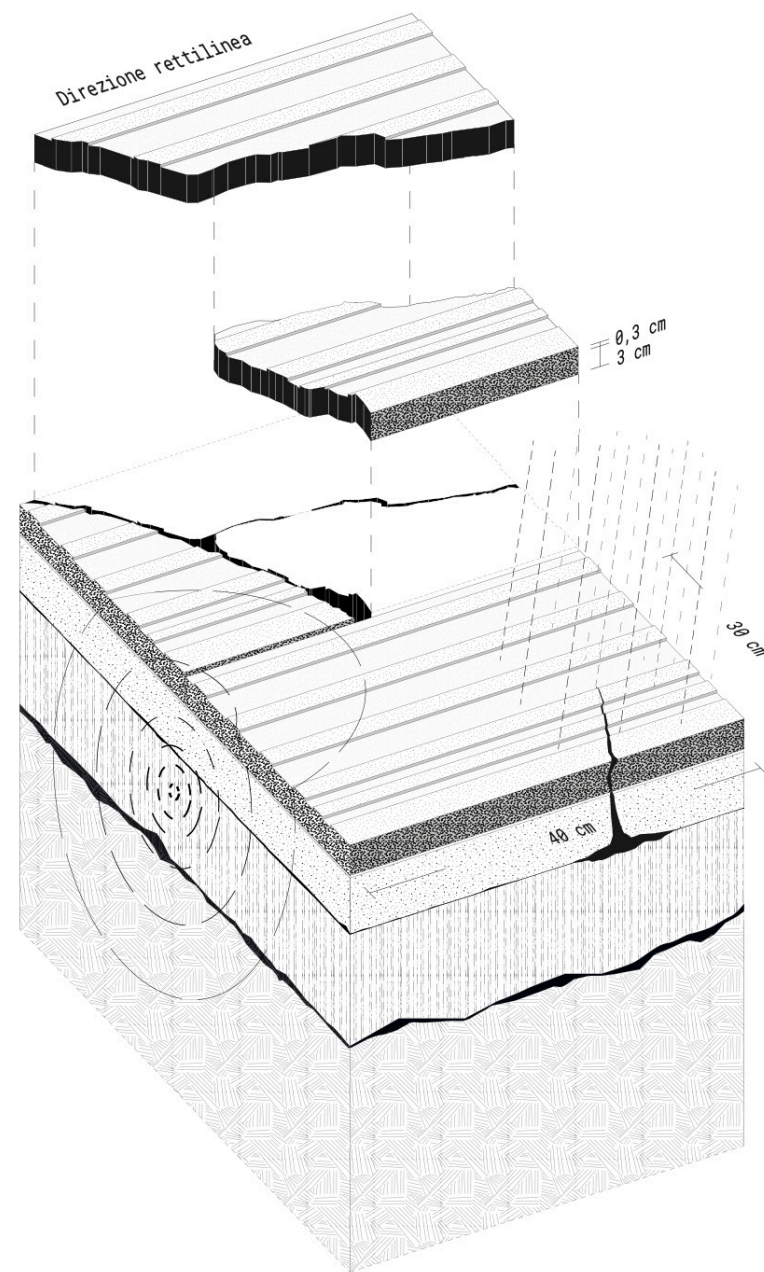
active smell map



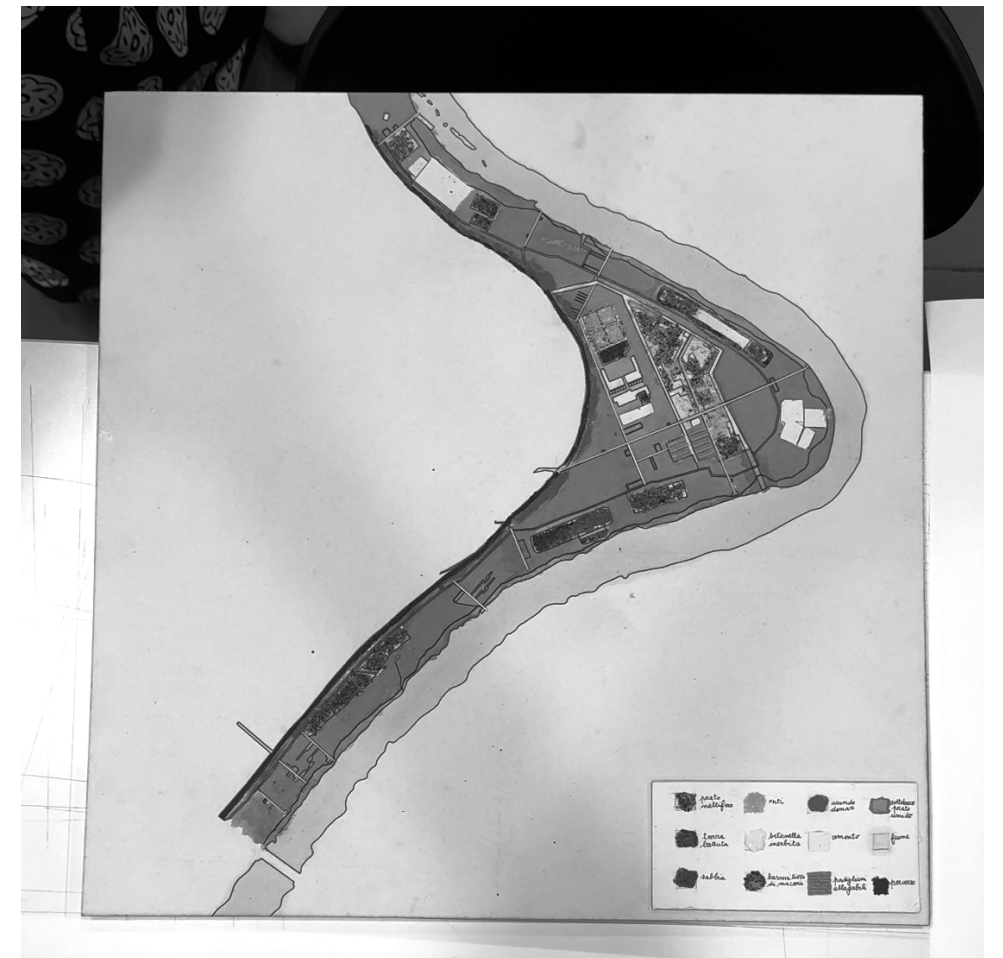
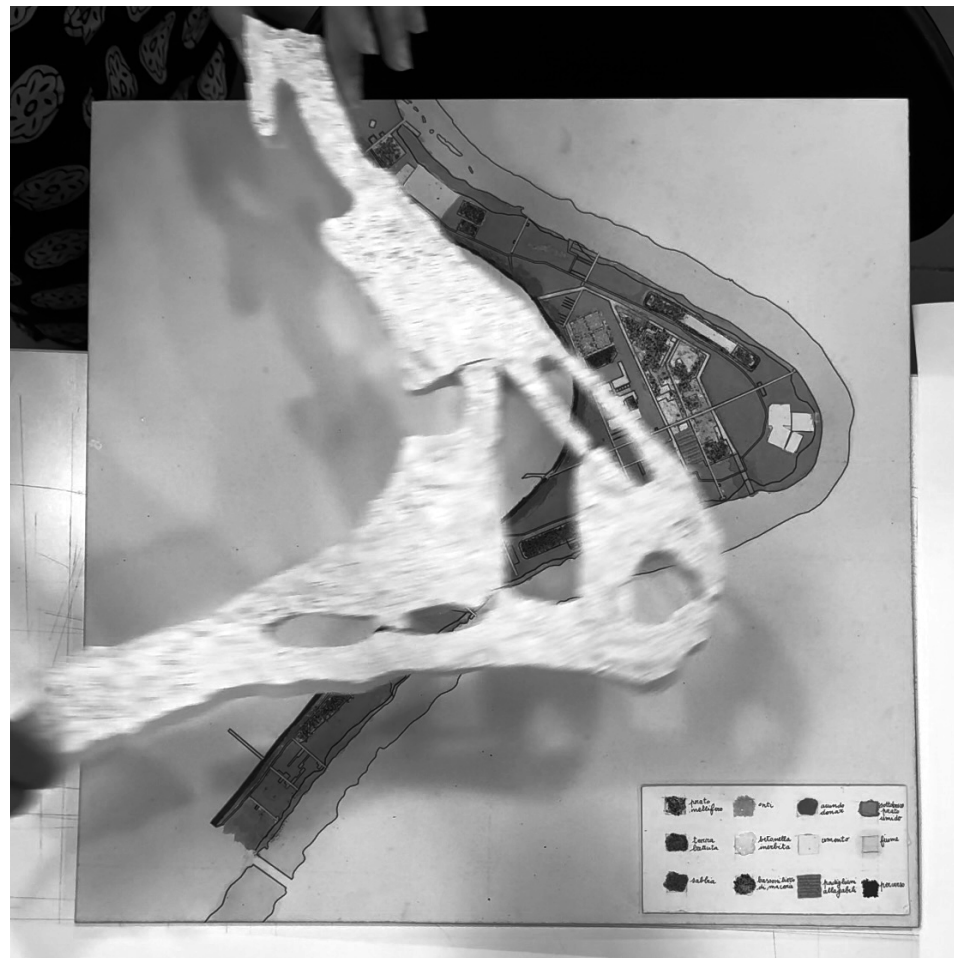
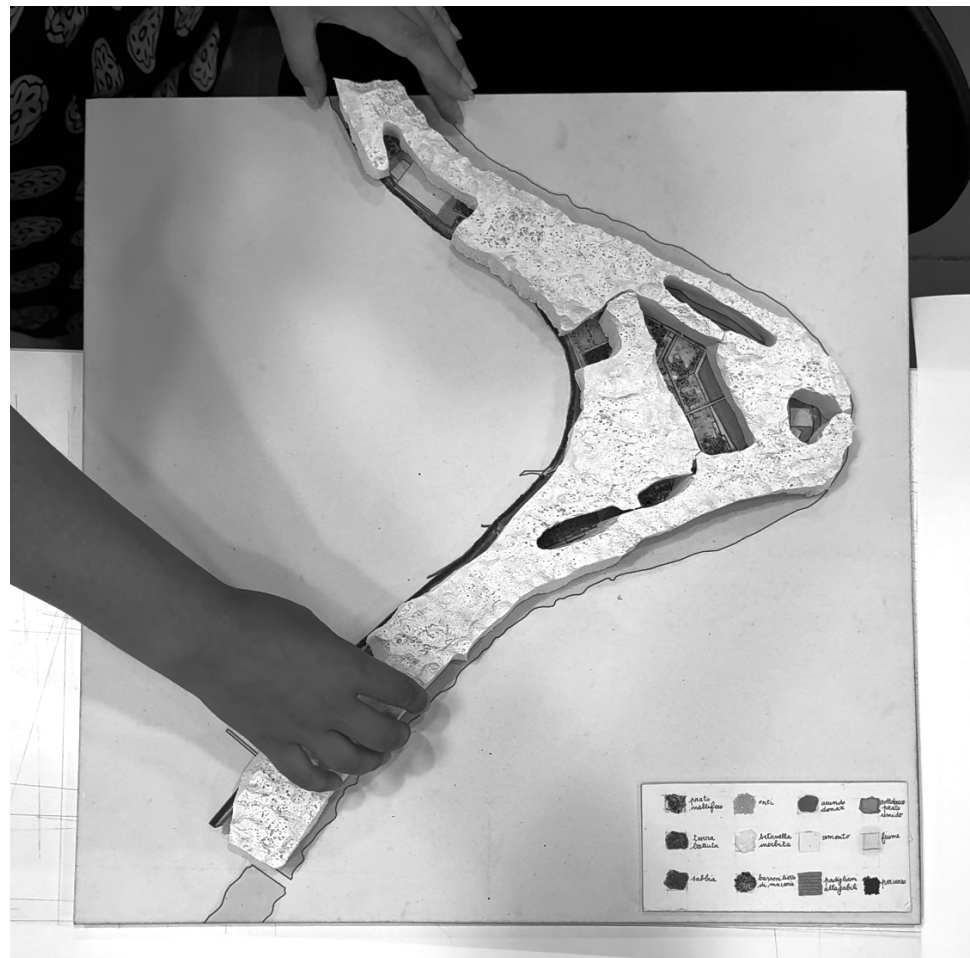
active noise map



active tactile map



▲ Redesign of the broken tactile paving and the forces acting upon it leading to its collapse: vibration, installation, loads, surface wear, material differences, soil movements; design hypothesis that takes into account the underlying forces of the collapse.



- ▲ Final project model. The forest, conceived as a unique ecological infrastructure, is built in a removable block in order to show the accurate richness and diversity of spaces and activities at ground level, under the canopy or in the glades.

Country/City	Italy
University / School	Roma Tre University
Academic year	2024-2025
Title of the project	The Park of Animal Movements
Authors	Anna D'Ambrosio, Alisee Del Gizzo, Aurora Gentile, Anna Panico

Title of the project	The Park of Animal Movements
Authors	Anna D'Ambrosio, Alisee Del Gizzo,Aurora Gentile, Anna Panico
Title of the course	Open Spaces Design Studio. Amphibian and Progressive Landscapes in Pian Due Torri Elbow (Rome)
Academic year	2023-2024
Teaching Staff	Annalisa Metta, Margherita Autorino, Federico Broggini, Sara Colaceci, Bruna Pollio, Valentina Peluso
Department / Section / Program of belonging	Department of Architecture / Master's Degree in Architecture and Urban Design
University / School	Roma Tre University



Written statement, short description of the project in English, no more than 250 words

ProSA proposes a design approach to landscape architecture that privileges the relationships between elements, the temporal dimension, interscalarity, interaction with the living and attention to the behaviour of communities, both human and non-human. The objective is to train the ability to read and transform complex open spaces, through three integrated modules of theoretical and practical tools: Landscape Architecture, Plant Ecology and Landscape Representation.

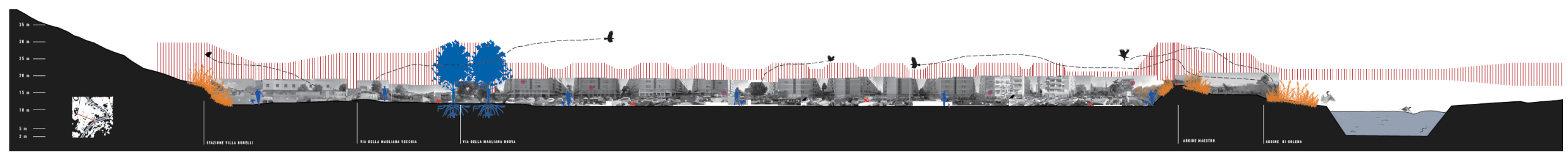
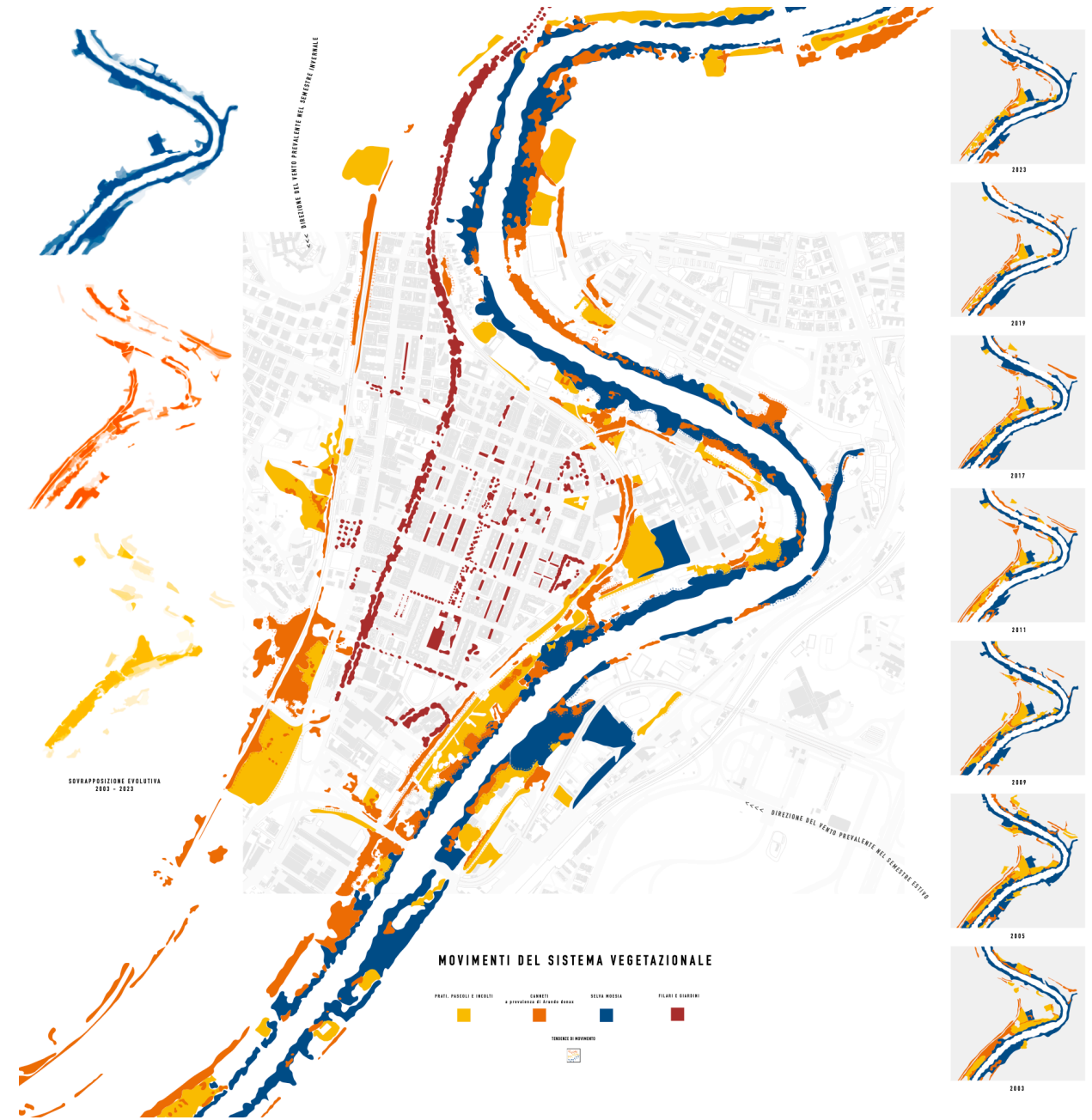
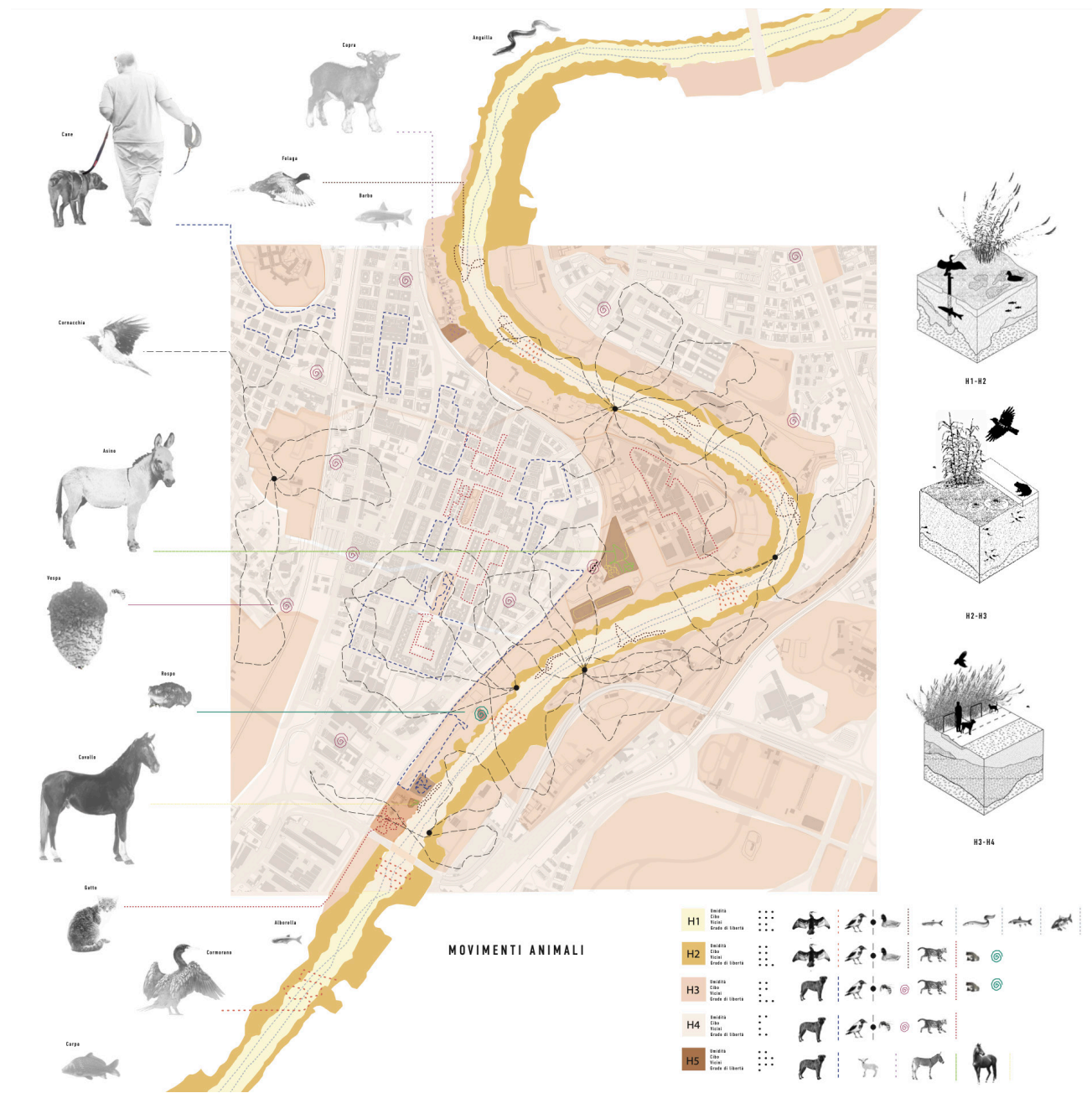
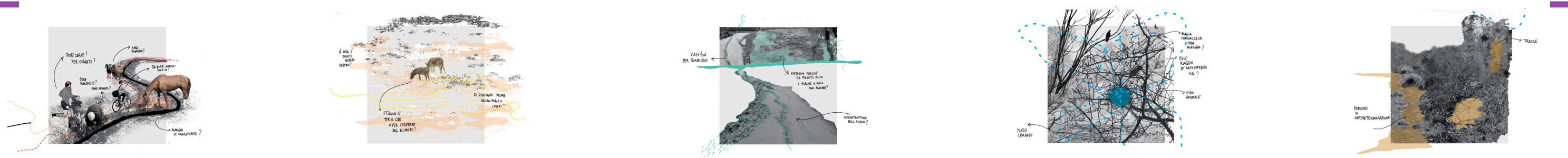
ProSA works on the interplay of two registers: space and time. The project area is the Pian Due Torri bend, along the Tiber river, in the Roman district of Magliana, a densely populated and urbanistically fragile context with poor quality open spaces. The project envisages its gradual transformation into an urban park over a period of 15 years.

The selected project starts from the study of the movements generated by human animals, non-human animals, vegetation, water and soil. This vitality is interpreted as a system of relationships that structure the landscape itself. The analysis of the main trends of the movements studied resulted in the configuration of a dense and diversified forest (“selva”), traversed at ground level by a rich succession of paths, equipment and other devices to be co-inhabited.

Barcelona International Landscape Biennial

Contact via email:
biennialadm@coac.net

Venue:
COAC - Col·legi Oficial d'Arquitectes de Catalunya
Carrer Arcs 1-3, 08002 Barcelona - Spain



▲ Study of agent movements on the site. On the left the flows and areas of influence of non-human animal species; on the right the trends of plant species groups; in section the interaction over the entire project area between the different living beings and elements involved in the analysis.