



Country/City

Aotearoa New Zealand / Wellington

University / School

Te Herenga Waka - Victoria University of Wellington / School of Architecture

Academic year

2024

Title of the project

Whitipoua

Authors

Ananda Acharya



Title of the project	Ko Wairarapa Tātou
Authors	Ananda Acharya
Title of the course	LAND 311 - Landscape Architecture Design Studio III
Academic year	2024
Teaching Staff	Bruno Marques
Department / Section / Program of belonging	Landscape Architecture Programme
University / School	Te Herenga Waka-Victoria University of Wellington / School of Architecture



Written statement, short description of the project in English, no more than 250 words

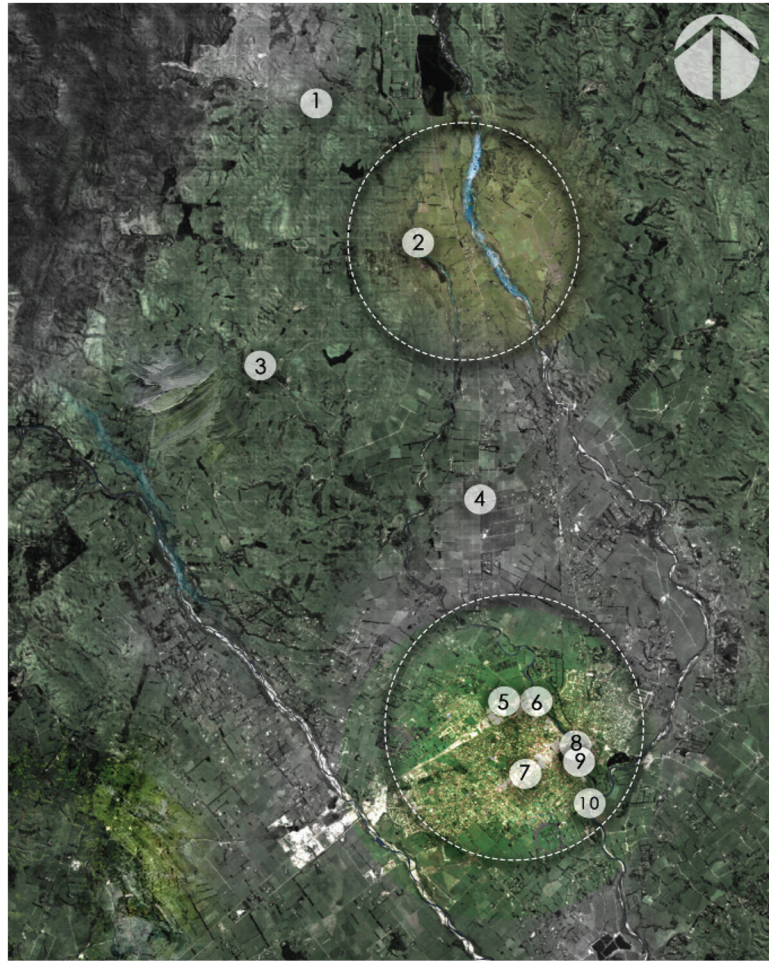
LAND311 is a third-year design studio focused on developing a landscape architecture vision for the Wairarapa region, in partnership with the local Māori iwi (indigenous tribe). Its distinctive learning objectives are to master multi-scalar thinking and adopt an Indigenous worldview. Students begin with a regional analysis to develop a strategic framework, then test this framework on multiple sites at a district level, before selecting one site for detailed design development down to a 1:20 construction scale. This iterative process, moving from broad strategy to detailed resolution and back again, scaffolds students' ability to manage complex, real-world issues like climate change, cultural heritage, and urban growth within a cohesive design narrative. The course project, 'Ko Wairarapa Tātou', challenges students to produce technically resolved and culturally resonant designs. Ananda Acharya's design, *Whitipoua, the Outsider's Journey*, reimagines the Whitipoua Bridge site as a place of cultural rediscovery. Guided by the Te Whare Tapa Whā health and wellbeing Māori model, the design seeks to amplify local Māori narratives and art, weaving history with play. The key idea is to create a multi-layered atmosphere where organic, natural structures encourage reconnection with the land and its indigenous roots. Its distinctive attributes are the powerful, almost mystical quality of the renders, and the successful creation of a dual-purpose space that is both a sacred cultural landmark and a playful community asset.

Barcelona International Landscape Biennial

Contact via email:  
biennialadm@coac.net

Venue:  
COAC - Col·legi Oficial d'Arquitectes de Catalunya  
Carrer Arcs 1-3, 08002 Barcelona - Spain





- 1 Large "Huia" Meeting Compass Point
- 2 Small "Huia" Meeting Compass Point
- 3 Cultural Poua posts
- 4 Ki O Rahi Goal Post
- 5 Log plank play area
- 6 Multi Log plank play area
- 7 Picnic Area
- 8 Dense Forest Trail
- 9 Public Carpark
- 10 Waipoua river walkway

"RESPIRE" has been defined as an exploration into constructing a more social and community integrated design focus.



"DECEPTION" has been defined as an exploration into constructing the growth and physical body of the site.



"Ambience" has been defined as an exploration into constructing the growth, consciousness and physical body of the site.



"Whakapapa" has been defined as an exploration into constructing and integrating the identity, heritage, environment, beliefs and values into a design.

