



Country/City	Aotearoa New Zealand / Wellington
University / School	Te Herenga Waka - Victoria University of Wellington / School of Architecture
Academic year	2024
Title of the project	On Moving Mountains: Animating the Ground Imaginary in Te Awarua-o-Porirua
Authors	Luke Mayall



Title of the project	On Moving Mountains: Animating the Ground Imaginary in Te Awarua-o-Porirua
Authors	Luke Mayall
Title of the course	LAND 593 - Landscape Architecture Research Portfolio
Academic year	2024
Teaching Staff	Hannah Hopewell
Department / Section / Program of belonging	Landscape Architecture Programme
University / School	Te Herenga Waka-Victoria University of Wellington / School of Architecture



**Written statement, short description of the project in English, no more than 250 words**

LAND 593 is a studio-based independent research by design project. Luke Mayall's research asserts that landscape architects might regain a more relational ethic towards soil care and participate in building regenerative futures by foregrounding soil as more than just a medium for plant growth, a material for modification, or a substrate to build upon. While soil is crucial to the well-being of both human and nonhuman life, its importance is rarely acknowledged within land development processes. Damaging practices of soil destruction brought about by ubiquitous topographic manipulation are culturally normalised and even idealised within landscape architecture through scenic images of neat, flat lawns and expansive rolling parks, employing dominant 'soil management techniques' naturalised within the field. Mindful of the ecologies and relations destroyed through ongoing practices of topographic manipulation, this research through design asks 'how would landscape architects approach design if soil was treated as a living entity?' The research develops three design experimentations, testing the capacity of landscape architectural practice to discover the multiplicity of life below ground and manifest spaces co-produced with their non-human actors. The humanly-modified ground of Paremata is explored as a case study, developing an embodied process of mapping and designing-with the discursive materiality of a site in an attempt to respond to the trauma of displaced soil. The results identified a methodology that positioned the site as a reciprocal collaborator, de-centering the human and allowing soil agency in co-creating spaces.

Barcelona International Landscape Biennial

Contact via email:  
biennialadm@coac.net

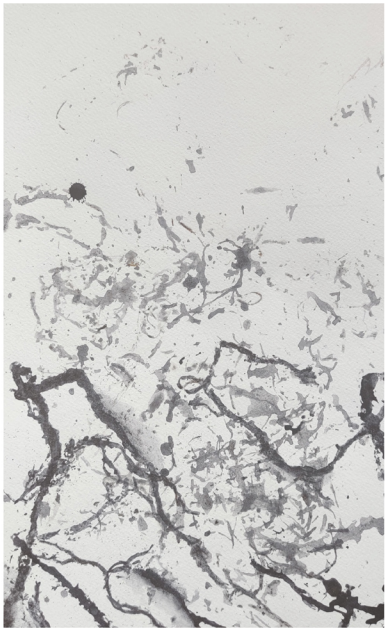
Venue:  
COAC - Col·legi Oficial d'Arquitectes de Catalunya  
Carrer Arcs 1-3, 08002 Barcelona - Spain



Design Experiment 01 //  
GROUNDING



Photography / Repeated walking



Object/soil entanglements



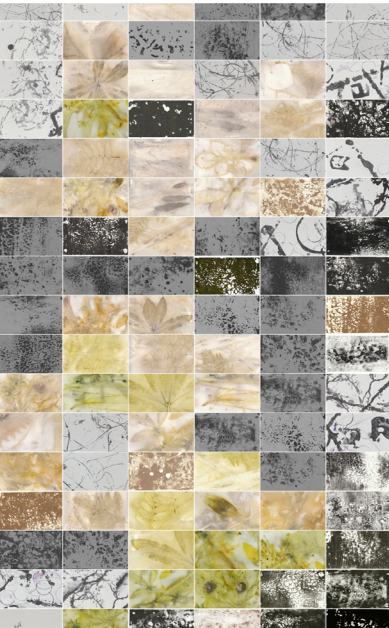
Plant/soil entanglements



Human/soil entanglements



Rock/soil entanglements



Design Experiment 02 //  
ACCUMULATIONS

